

DEPARTMENT OF THE INTERIOR

FRANKLIN K. LANE, Secretary

UNITED STATES GEOLOGICAL SURVEY

GEORGE OTIS SMITH, Director

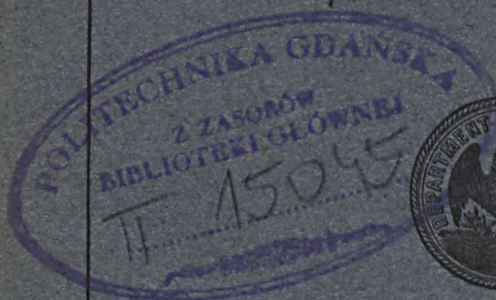
BULLETIN 633

SPIRIT LEVELING IN MAINE

1899-1915

R. B. MARSHALL, CHIEF GEOGRAPHER

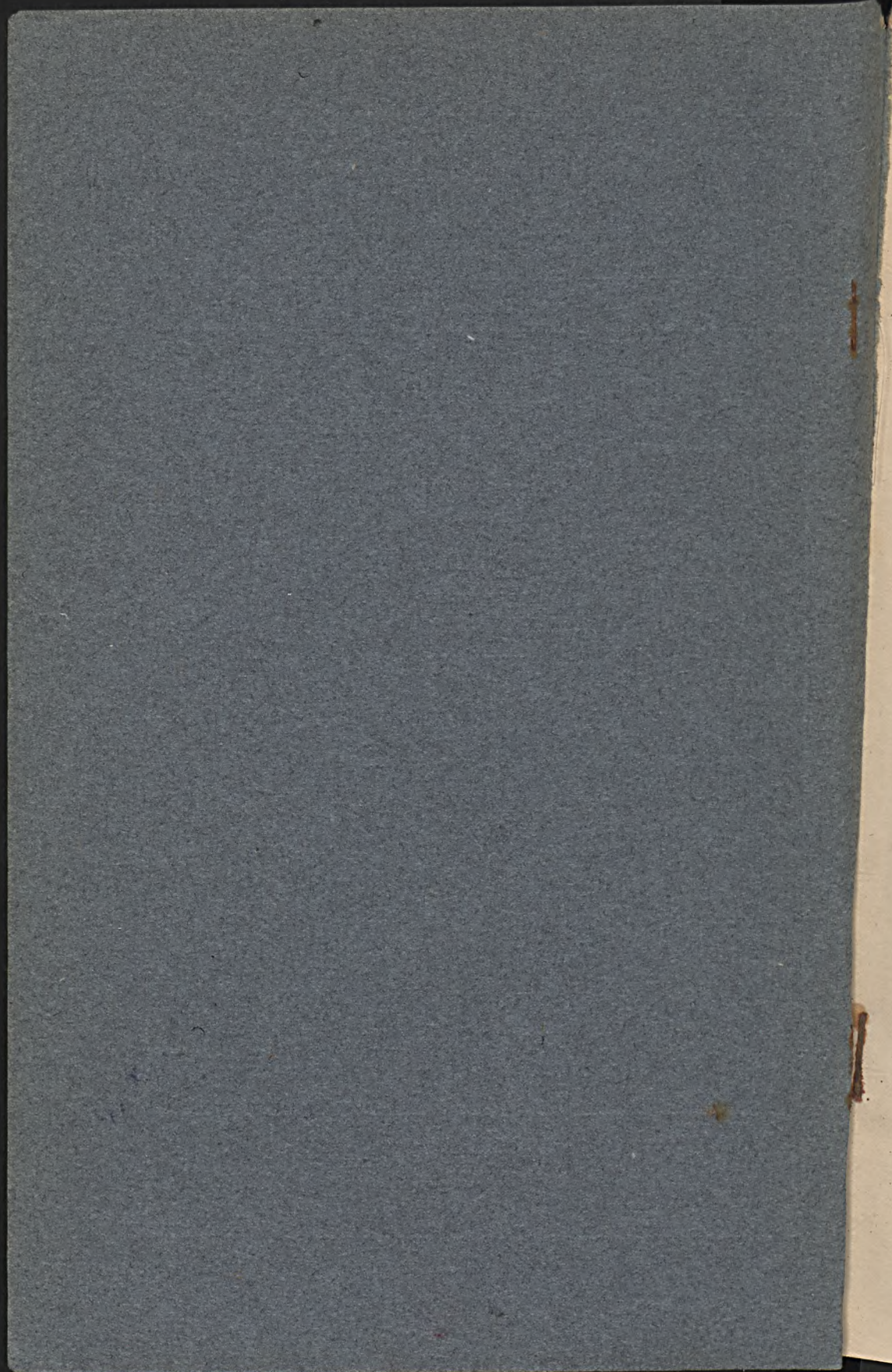
Work done in cooperation with the State



WASHINGTON

GOVERNMENT PRINTING OFFICE

1916



DEPARTMENT OF THE INTERIOR

FRANKLIN K. LANE, Secretary

UNITED STATES GEOLOGICAL SURVEY

GEORGE OTIS SMITH, Director

Bulletin 633

SPIRIT LEVELING IN MAINE

1899-1915

R. B. MARSHALL, CHIEF GEOGRAPHER



Work done in cooperation with the State



Wpisano do inwentarza
ZAKŁADU GEOLOGII

Dział B Nr. 228

Dnia 1. III 1977

*Bibl. Kat. Nauk o Ziemi
Dz. Nr. 8,*

WASHINGTON
GOVERNMENT PRINTING OFFICE

1916

0



ADDITIONAL COPIES
OF THIS PUBLICATION MAY BE PROCURED FROM
THE SUPERINTENDENT OF DOCUMENTS
GOVERNMENT PRINTING OFFICE
WASHINGTON, D. C.
AT
5 CENTS PER COPY

0

CONTENTS.



	Page.
Introduction.....	5
Cooperation.....	5
Previous publication.....	5
Personnel.....	5
Classification.....	5
Bench marks.....	6
Datum.....	6
Topographic maps.....	7
Precise leveling.....	8
Bath, Freeport, Gray, Kezar Falls, Portland, and Sebago quadrangles (Cumberland and Oxford counties).....	8
Primary leveling.....	10
Portland quadrangle (Cumberland and York counties).....	10
Anson, Augusta, Bingham, Brassua Lake, Kingsbury, Moosehead, Norridgewock, Skowhegan, The Forks, Vassalboro, and Waterville quadrangles (Kennebec, Somerset, and Piscataquis counties).....	12
Buckfield, Lewiston, Livermore, and Poland quadrangles (Androscoggin, Cumberland, Franklin, Kennebec, Oxford, and Sagadahoc counties).....	18
Bethel, Bryant Pond, Fryeburg, Kezar Falls, and Norway quadrangles (Cumberland, Oxford, and York counties).....	23
Belfast, Brooks, Burnham, Castine, Liberty, Rockland, and Waldoboro quadrangles (Kennebec, Knox, Lincoln, and Waldo counties).....	28
Bangor, Bluehill, Bucksport, Ellsworth, Mount Desert, Orland, and Orono quadrangles (Hancock, Penobscot, and Waldo counties).....	35
Mattawamkeag, Millinocket, Passadumkeag, Seboeis, and Winn quadrangles (Penobscot County).....	39
Boyd Lake, Passadumkeag, and Saponic quadrangles (Penobscot County).....	41
Cherryfield quadrangle (Washington County).....	44
Cutler and Eastport quadrangles (Washington County).....	45
Augusta, Bath, Bethel, Bryant Pond, Buckfield, Dixfield, Freeport, Gardiner, Lewiston, and Livermore quadrangles (Androscoggin, Cumberland, Franklin, Kennebec, Oxford, and Sagadahoc counties).....	46
Brassua Lake, Chesuncook, Churchill Lake, Harrington Lake, Long Pond, Matagamon, Millinocket, Moosehead, Mount Katahdin, Norcross, Northeast Carry, Shin Ponds, Staceyville, and Telos Lake quadrangles (Penobscot, Piscataquis, and Somerset counties).....	49
Appendix: Secondary elevations.....	54
Index.....	59

ILLUSTRATION.

PLATE I. Geological Survey bench marks.....	Page. 5
---	------------



CONTENTS

Table of Contents (mirrored text):

Page 1. Introduction

Page 2. The first part of the work

Page 3. The second part of the work

Page 4. The third part of the work

Page 5. The fourth part of the work

Page 6. The fifth part of the work

Page 7. The sixth part of the work

Page 8. The seventh part of the work

Page 9. The eighth part of the work

Page 10. The ninth part of the work

Page 11. The tenth part of the work

Page 12. The eleventh part of the work

Page 13. The twelfth part of the work

Page 14. The thirteenth part of the work

Page 15. The fourteenth part of the work

Page 16. The fifteenth part of the work

Page 17. The sixteenth part of the work

Page 18. The seventeenth part of the work

Page 19. The eighteenth part of the work

Page 20. The nineteenth part of the work

Page 21. The twentieth part of the work

Page 22. The twenty-first part of the work

Page 23. The twenty-second part of the work

Page 24. The twenty-third part of the work

Page 25. The twenty-fourth part of the work

Page 26. The twenty-fifth part of the work

Page 27. The twenty-sixth part of the work

Page 28. The twenty-seventh part of the work

Page 29. The twenty-eighth part of the work

Page 30. The twenty-ninth part of the work

Page 31. The thirtieth part of the work

Page 32. The thirty-first part of the work

Page 33. The thirty-second part of the work

Page 34. The thirty-third part of the work

Page 35. The thirty-fourth part of the work

Page 36. The thirty-fifth part of the work

Page 37. The thirty-sixth part of the work

Page 38. The thirty-seventh part of the work

Page 39. The thirty-eighth part of the work

Page 40. The thirty-ninth part of the work

Page 41. The fortieth part of the work

Page 42. The forty-first part of the work

Page 43. The forty-second part of the work

Page 44. The forty-third part of the work

Page 45. The forty-fourth part of the work

Page 46. The forty-fifth part of the work

Page 47. The forty-sixth part of the work

Page 48. The forty-seventh part of the work

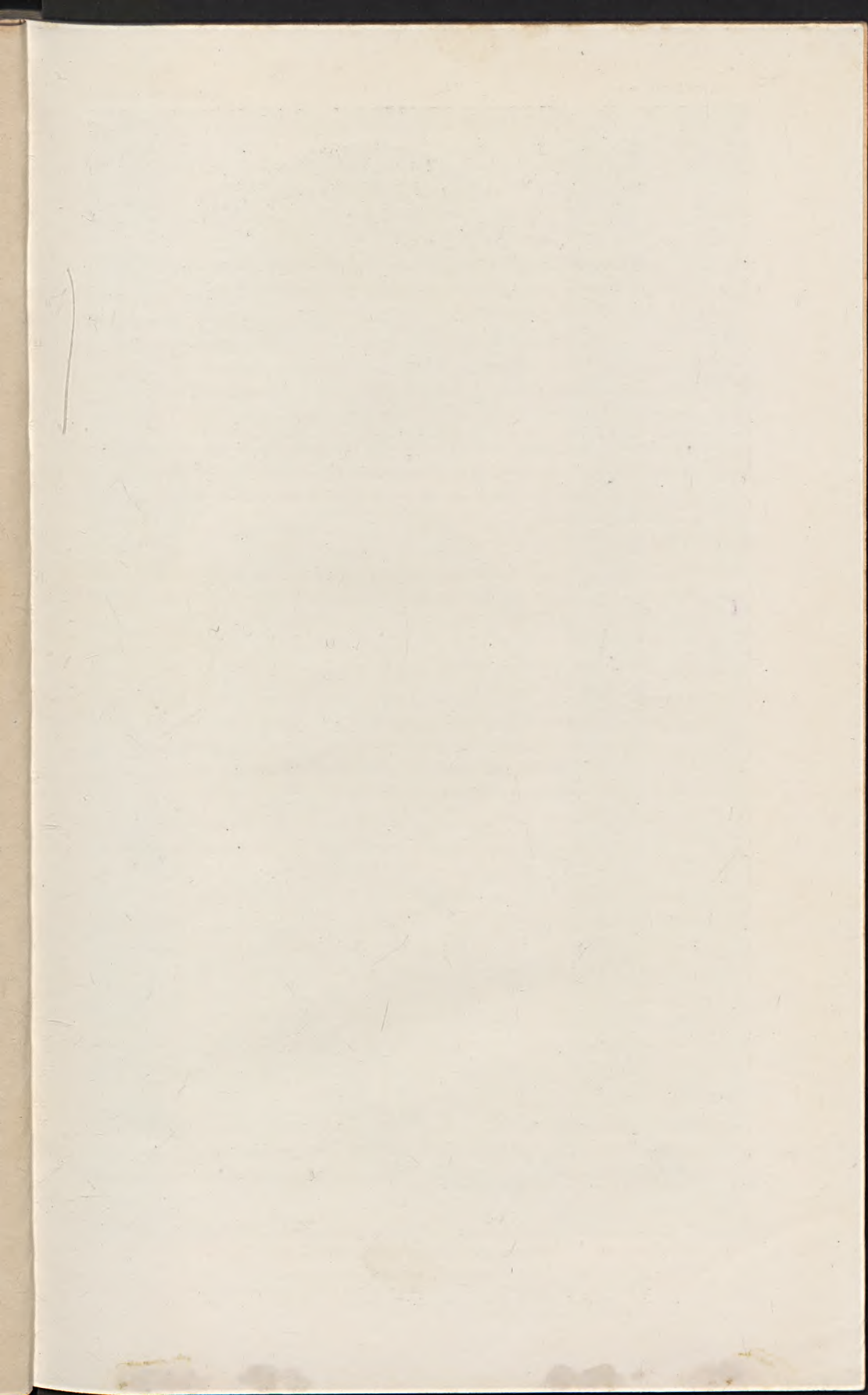
Page 49. The forty-eighth part of the work

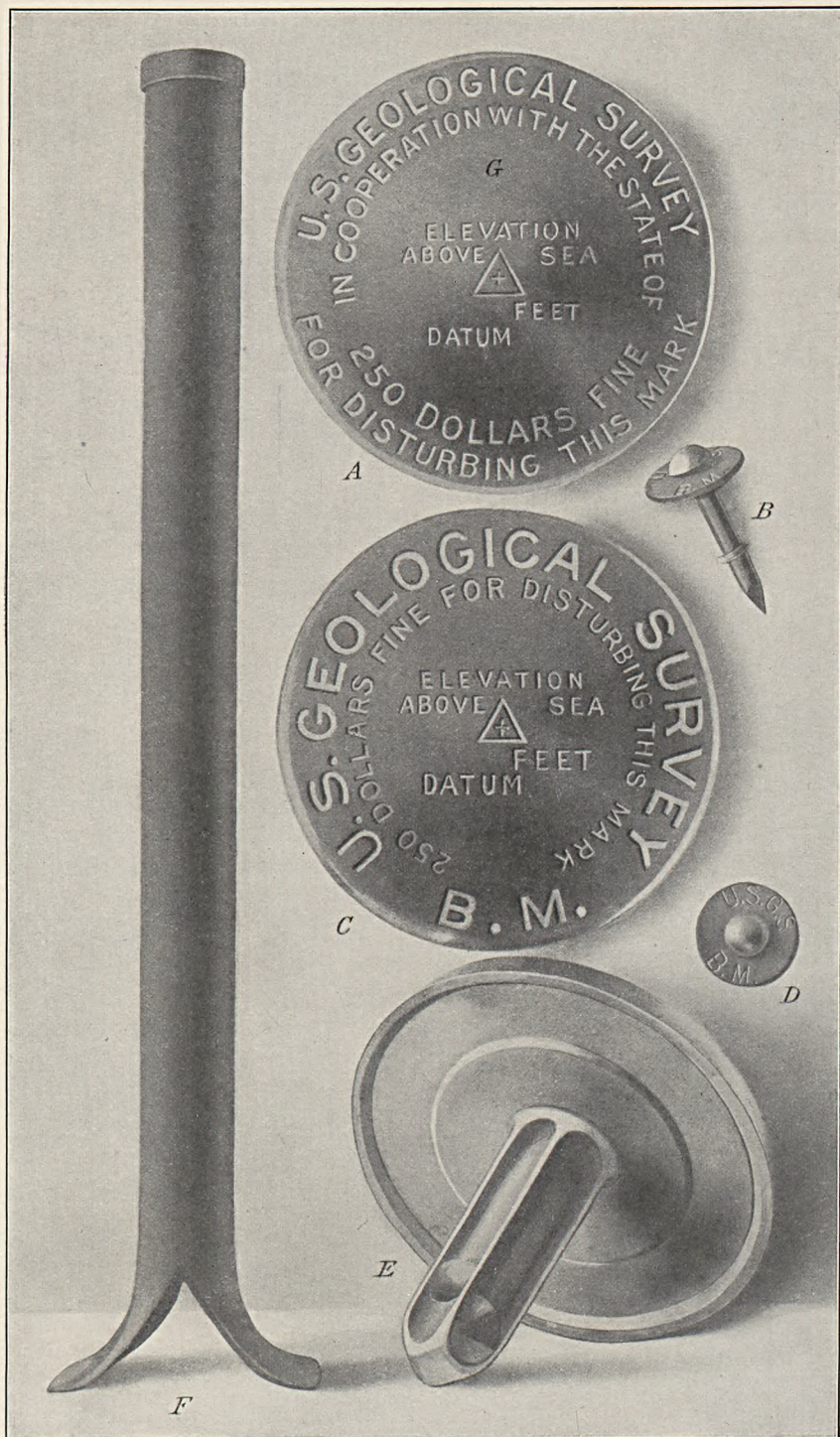
Page 50. The forty-ninth part of the work

Page 51. The fiftieth part of the work

ILLUSTRATIONS

Page 1. Illustration of the first part of the work





GEOLOGICAL SURVEY BENCH MARKS.

A, Tablet used in cooperating States. The State name is inserted at *G*.
B and *D*, Copper temporary bench mark, consisting of a nail and copper washer.
A, *C*, and *E*, Tablets for stone or concrete structures.
F, Iron post used where there is no rock.

SPIRIT LEVELING IN MAINE, 1899-1915.

R. B. MARSHALL, Chief Geographer.



INTRODUCTION.

Cooperation.—The State of Maine contributed financially to this work during the years 1899 to 1915, inclusive, and was represented by Leslie A. Lee and C. S. Hichborn from 1899 to 1908, inclusive, by Nathaniel M. Jones in 1909, by F. C. Robinson and B. M. Fernald in 1910, by F. W. Plaisted in 1911-12, by William T. Haines in 1913-14, and by Benjamin F. Cleaves in 1915.

Previous publication.—The results of spirit leveling previously published in Bulletin 437, containing descriptions and elevations of bench marks established in Maine from 1899 to 1909, inclusive, and based on the 1903 adjustment, have been corrected to agree with the 1912 adjustment of precise leveling of the Coast and Geodetic Survey and are here republished, together with all results of spirit leveling by the United States Geological Survey since 1909. The elevations are likely to be changed but slightly by any future adjustment.

Personnel.—The field work from 1899 to 1906, inclusive, was done under the direction of H. M. Wilson, geographer, and that from 1907 to 1915, inclusive, was done under Frank Sutton, geographer. The work since January, 1908, was done under the general direction of R. B. Marshall, chief geographer. Credit is given in the heading of each list to the several levelmen. The office work of computation, adjustment, and preparation of lists was done mainly by S. S. Gannett, geographer, under the general direction of E. M. Douglas, geographer.

Classification.—The elevations are classified as precise or primary, according to the methods employed in their determination. The former are determined by lines of levels run either in both forward and backward directions or by simultaneous double-rodged lines, a high-grade instrument being used and special precautions being taken in observations and reduction to correct errors and make the line continuously good throughout. The latter or primary levels are determined with the Y level, precautions being taken against only the principal errors and the levels being run mostly in circuits of single

lines. The allowable limit of error observed on the precise work already done by the Geological Survey in this State is represented in feet by $0.017\sqrt{D}$ and that for the primary work by $0.05\sqrt{D}$, in which D is the length of circuit in miles.

Bench marks.—The standard bench marks are of two forms. The first form is a circular bronze or aluminum tablet (*C* and *E*, Pl. I), $3\frac{1}{2}$ inches in diameter and $\frac{1}{4}$ inch thick, having a 3-inch stem, which is cemented in a drill hole in solid rock in the wall of some public building, a bridge abutment, or other substantial masonry structure. The second form (*F*, Pl. I), used where masonry or rock is not available, consists of a hollow wrought-iron post $3\frac{1}{2}$ inches in outer diameter and 4 feet in length, which is set about 3 feet in the ground. The bottom is spread out to a width of 10 inches in order to give a firm bearing on the earth, and a bronze or aluminum-bronze cap is riveted over the top of the post. A third style of bench mark, with abbreviated lettering (*B* and *D*, Pl. I), is used for unimportant points. This consists of a special copper nail $1\frac{1}{2}$ inches in length driven through a copper washer $\frac{7}{8}$ inch in diameter. The tablets as well as the caps on the iron posts are appropriately lettered, and cooperation by States is indicated by the addition of the State name (*G*, Pl. I).

The numbers stamped on the bench marks described in the following pages represent the elevations to the nearest foot as determined by the levelman. These numbers are stamped with $\frac{3}{16}$ -inch steel dies on the tablets or post caps, to the left of the word "Feet." The office adjustment of the notes and the reduction to mean sea-level datum may so change some of the figures that the original markings are 1 or 2 feet in error. It is assumed that engineers and others who have occasion to use the bench-mark elevations will apply to the Director of the United States Geological Survey, at Washington, D. C., for the adjusted values, and will use the markings as identification numbers only.

Datum.—All elevations determined by the United States Geological Survey and the United States Coast and Geodetic Survey are referred to mean sea level, which is the level that the sea would assume if the influence of winds and tides were eliminated. This level is not the elevation determined from the mean of the highest and the lowest tides, nor is it the half sum of the mean of all the high tides and the mean of all the low tides, which is called the half-tide level.

Mean sea level is the average height of the water, all stages of the tide being considered. It is determined from observations made by means of tidal gages placed at stations where local conditions, such as long, narrow bays, rivers, and like features, will not affect the height of the water. To obtain even approximately correct results these observations must extend over at least one lunar month, and if

accuracy is desired they must extend over several years. At ocean stations the half-tide level and the mean sea level usually differ but little. It is assumed that there is no difference between the mean sea levels determined from observations in the Atlantic Ocean, the Gulf of Mexico, and the Pacific Ocean.

The connection with tidal stations for bench marks in certain areas that lie at some distance from the seacoast is still uncertain, and this fact is indicated by the addition of a letter or word to the right of the word "Datum" on tablets or posts. For such areas corrections for published results will be made from time to time as the precise-level lines of the United States Geological Survey, the United States Coast and Geodetic Survey, or other Government organizations are extended.

Topographic maps.—Maps of the following quadrangles, wholly or partly in Maine, have been published by the United States Geological Survey up to July 1, 1916. They may be obtained, unless otherwise noted, at 10 cents each or \$3 for 50 on application to the Director of the Survey, at Washington, D. C.

Anson.	Livermore.
Augusta.	Matinicus.
Bangor.	Monhegan. ³
Bar Harbor.	Mount Desert.
Bath	Mount Washington and vicinity (N. H.-Me.). ²
Berwick (Me.-N. H.)	Newfield (Me.-N. H.).
Biddeford	Norridgewock.
Bingham.	North Conway (N. H.-Me.). ²
Bluehill. ¹	Norway.
Boothbay.	Orland.
Bryant Pond.	Orono.
Buckfield.	Penobscot Bay. ¹
Bucksport.	Petit Manan.
Buxton.	Poland.
Casco Bay.	Portland.
Castine. ¹	Rockland.
Cherryfield.	Sebago.
Deer Isle. ¹	Skowhegan.
Dover (N.H.-Me.). ²	Small Point.
Eastport.	Swan Island.
Ellsworth.	Tenants Harbor.
Freeport.	The Forks.
Fryeburg.	Vassalboro.
Gardiner.	Vinalhaven. ¹
Gorham (N. H.-Me.). ²	Waterville.
Gray.	Wiscasset.
Kennebunk.	York (Me.-N. H.).
Kezar Falls.	
Lewiston.	

¹ Bluehill, Castine, Deer Isle, and Vinalhaven sheets, on scale of 1:62500, have been reduced and form Penobscot Bay sheet, on scale of 1:125000.

² Mount Washington and vicinity map includes Gorham and North Conway sheets, together with the Crawford Notch and Mount Washington sheets, New Hampshire.

³ Shows wooded areas.

PRECISE LEVELING.

Bath, Freeport, Gray, Kezar Falls, Portland, and Sebago quadrangles.

CUMBERLAND AND YORK COUNTIES.

The elevations in the following list are the result of two lines of precise levels run in 1906: One line from Portland, northeast along the Maine Central Railroad, to Brunswick (where it joins the double-rodged primary line of the water-resources branch from Augusta), and thence up the Androscoggin River; the other line from Portland, northwest along the Maine Central Railroad, to Cornish, and thence west along highways through the southern part of Kezar Falls quadrangle to the New Hampshire State line. Both lines are based on a bench mark established by the United States Engineer Corps in 1901 from previous marks set by the Coast and Geodetic Survey, now destroyed, the heights of which were determined from tidal records made in 1852-53 and in 1864-1866. The bench mark is the bottom of a half-inch drill hole one-eighth inch deep on the upper surface of the water table between the columns at the right of the Commercial Street entrance to the customhouse building. Its elevation is 14.069 feet above mean sea level, and the mean range of tide at Portland as corrected in 1896 is 8.824 feet. The methods, instrument, and limit of error were practically those now used by the Coast and Geodetic Survey, except that the rods were 3.5 yards long, graduated to yards and hundredths with incased thermometers.

PORTLAND QUADRANGLE.

[Latitude 43° 30'-43° 45'; longitude 70° 15'-70° 30'.]

From Portland northeast along Maine Central R. R. to Cumberland Junction.

	Feet.
Portland, on step at right side of main entrance to city hall; bronze tablet stamped "67"	66. 582
Portland, on upper surface of water table between columns at right of Commercial Street entrance to customhouse, bottom of half-inch drill hole one-eighth inch deep (above low water, 18.481).....	14. 069
Portland, 0.9 mile south of customhouse, on foundation of highway bridge over railroad, east side of track; chiseled square.....	12. 210
Portland, right side of main entrance to Union Station; aluminum tablet stamped "26"	26. 070
Woodfords, in front of station; top of rail.	65. 7
Deering Junction, in front of station; top of rail.....	103. 8
Deering Junction, 0.2 mile northeast of, southeast side of track, 225 feet northeast of highway, in west side of granite ledge; aluminum tablet stamped "110"	109. 530
Deering Junction, 2.9 miles northeast of, railroad bridge over Presumpscot River, northwest side of track, on top of northeast abutment; aluminum tablet stamped "48"	47. 694

From Portland along Maine Central R. R. to Newhall.

	Feet.
Portland, on right side of main entrance to Union Station (porte-cochère), in curb; aluminum tablet stamped "26".....	26. 070
Cumberland Mills, 0.2 mile northwest of, south side of track, west abutment of railroad bridge, in retaining wall; aluminum tablet stamped "69".....	68. 599
South Windham depot, 110 feet east of, first road east of station parallel with railroad, south of T road, 3 feet higher than road, in rock ledge east side of road; aluminum tablet stamped "154".....	153. 906
Newhall, in front of station; top of rail.....	168. 09

GRAY QUADRANGLE.

[Latitude 43° 45'-44°; longitude 70° 15'-70° 30'.]

At Cumberland Junction.

Cumberland Junction, 250 feet south of station, southeast side of track, top of culvert; aluminum tablet stamped "58".....	57. 984
Cumberland Junction, in front of station; top of rail.....	59. 0

FREEPORT QUADRANGLE.

[Latitude 43° 45'-44°; longitude 70°-70° 15'.]

From Cumberland Junction northeast along Maine Central R. R. to Brunswick.

Cumberland Junction, 3.6 miles northeast of, bridge over Royal River, northwest side of track, on top of south abutment; aluminum tablet stamped "92".....	91. 821
Yarmouth Junction, in front of station; top of rail.....	89. 8
Yarmouth, 1.7 miles northeast of, 364 feet southwest of overhead highway bridge, southeast side of track, on ledge; chiseled square.....	73. 212
Yarmouth Junction, 4 miles northeast of, southwest end of southeast abutment of overhead highway bridge; aluminum tablet stamped "90".....	89. 950
Freeport, in front of station; top of rail.....	129. 6
Freeport, 0.2 mile northeast of, northwest side of track, just south of highway, in rock ledge; aluminum tablet stamped "133".....	132. 504
Freeport, 4.1 miles northeast of, southeast side of track, in rock ledge; aluminum tablet stamped "136".....	135. 529

BATH QUADRANGLE.

[Latitude 43° 45'-44°; longitude 69° 45'-70°.]

At Brunswick.

Brunswick, west side of Union Station, about 16 feet from southwest corner of grating over basement windows, in curb 6 inches from wall; aluminum tablet stamped "67".....	66. 519
Brunswick, left of main entrance to city hall, in wall; aluminum tablet stamped "70".....	69. 589
Brunswick, south side of Union Station, in doorstep leading to basement; bronze tablet stamped "67".....	67. 094

SEBAGO QUADRANGLE.

[Latitude 43° 45'-44°; longitude 70° 30'-70° 45'.]

From Sebago along Maine Central R. R. to point 2.1 miles northwest of Mattocks.

Sebago, in front of station; top of rail.....	275. 453
Sebago Lake station, 0.3 mile northwest of, north side of track, in rock ledge; aluminum tablet stamped "287".....	287. 555
Richville, in front of station; top of rail.....	313. 740

Richville, 0.6 mile northwest of, right side of track, in rock; aluminum tablet stamped "293".....	Feet. 293. 283
Steep Falls, in front of station; top of rail.....	303. 432
Steep Falls, 0.2 mile northwest of, right side of track, in rock; aluminum tablet.....	300. 370
Mattocks, in front of station; top of rail.....	283. 331
Mattocks, 2.1 miles northwest of, right side of track, in rock; aluminum tablet stamped "320".....	320. 050

KEZAR FALLS QUADRANGLE.

[Latitude 43° 45'-44"; longitude 70° 45'-71".]

From Cornish west along highways to point 1.2 miles west of Porter.

Cornish, at forks of Maine and Cumberland streets, on right side going east, in side yard of dwelling, in rock; aluminum tablet stamped "347".....	346. 943
Kezar Falls, northeast of bridge, in Hollem's lot, 60 feet from road, 12 feet east of west fence, in rock; aluminum tablet stamped "381".....	381. 345
Porter, 1.2 miles west of north side of road, in rock; aluminum tablet stamped "399".....	398. 873

PRIMARY LEVELING.

Portland quadrangle.

CUMBERLAND AND YORK COUNTIES.

Elevations are based on precise level bench marks at Portland and Cumberland Mills.

The leveling was done in 1914 by R. C. Seitz.

PORTLAND QUADRANGLE.

[Latitude 43° 30'-43° 45'; longitude 70° 15'-70° 30'.]

From Portland southwest along Boston & Maine R. R. to Saco, thence north along highways to Buxton station, thence east along Boston & Maine R. R. to Cumberland Mills.

Portland, on right side of main entrance to Union Station, in curb; aluminum tablet stamped "26".....	Feet. 26. 070
Portland, Vaughan Bridge, on coping stone at southeast corner; chiseled cross.....	15. 96
Portland, 2 miles south of, T road southeast, northeast angle of Saco road and Old Rigby road; top of fire hydrant.....	33. 78
Portland, 3.50 miles south of, junction eastern and western divisions Boston & Maine R. R., end of culvert in north angle; bronze tablet stamped "Me. 36 1914 S".....	36. 185
Private road crossing; top of east rail.....	31. 68
Private road crossing; top of east rail.....	40. 8
Portland, 5 miles southwest of, $\frac{3}{4}$ mile north of Oakhill station, west end of culvert under railroad; tablet stamped "Me. 40 1914 S".....	39. 565
Oakhill station; top of rail.....	34. 2
Oakhill station, on rock near pump at south end of station; chisel mark...	37. 20
Oakhill station, 1 mile south of, northwest corner of culvert under railroad; chisel mark.....	10. 22
West Scarboro station, 0.50 mile north of, on boulder east of track; chisel mark.....	5. 43

	Feet.
West Scarborough station, at highway crossing; top of east rail.....	12. 1
West Scarborough station, 0.70 mile south of, on east right-of-way line of Boston & Maine R. R., north foundation stone of overhead bridge; tablet stamped "Me. 35 1914 S".....	34. 622
West Scarborough station, 1.70 miles south of, northwest corner of base of semaphore; chisel mark.....	55. 718
West Scarborough station, 2.30 miles south of; top of rail over highway.....	57. 37
West Scarborough station, 3.35 miles south of, northwest corner of base of semaphore 969; chisel mark.....	76. 06
Saco station, 1.30 miles north of, top of west end of south abutment of overhead bridge; tablet stamped "Me. 71 1914 S".....	70. 782
Saco station, north street crossing, in northeast angle, stone property corner; chisel mark.....	89. 242
Saco station, 1 mile south of, top of northwest corner north abutment Saco River bridge; tablet stamped "Me. 73 1914 S".....	73. 177
Saco station, 1.40 miles northwest of, T road northeast, on rock in east angle; chisel mark.....	112. 88
Saco station, 2.5 miles northwest of, private road south to Pillsbury's retreat, in west end of small box drain; copper nail.....	133. 212
Saco station, 3.20 miles northwest of, about 200 feet west of T road south, north end stone arch under highway; tablet stamped "Me. 134 1914 S".....	133. 651
Saco station, 4.10 miles northwest of, T road northeast, in base of telephone pole in triangle; copper nail.....	151. 568
Heath meetinghouse, 0.20 mile south of, on stone at northeast corner of small bridge; chisel mark.....	138. 07
Heath meetinghouse, $\frac{3}{4}$ mile north of, about 1,000 feet west of forks of road, north end of stone arch; tablet stamped "Me. 93 1914 S".....	92. 300
South Buxton, $2\frac{1}{4}$ miles (air line) south of, forks of road, on rock on east side of road in front of house and at south corner of triangle; chisel mark.....	158. 88
York-Cumberland county line; T road west.....	187
Dunstan, 5 miles west of, 3.5 miles east of Buxton station, at cross roads, rock in southwest angle; chisel mark.....	147. 85
Dunstan, 5 miles west of, 3.5 miles east of Buxton station, in southeast angle of stone property corner; tablet stamped "Me. 1914 147 S".....	146. 841
Private road south, on rock; chisel mark.....	176. 76
South Buxton, at cross roads, rock ledge in southeast angle; chisel mark..	182. 73
Private road south.....	173
Buxton station, 1 mile east of, stone at east end of culvert, 150 feet north of cross roads; chisel mark.....	191. 41
Gorham, 3.60 miles south of, west end of small drain under railroad at south side of highway; tablet stamped "Me. 1914 181 S".....	180. 994
Highway crossing; top of rail.....	183. 2
Gorham, 2.30 miles south of, on York-Cumberland county line, 40 feet west of railroad; top of stone post.....	198. 37
Highway crossing; top of east rail.....	234. 3
Gorham, 1.10 miles south of, in southwest corner of base of block signal No. 1353; top of bolt.....	243. 71
Gorham, south end of second (from ground) course of masonry in west abutment of overhead bridge; tablet stamped "Me. 212 1914 S".....	212. 011
Gorham station; top of rail.....	207. 7
Gorham station, 0.70 mile north of, at highway crossing; top of east rail...	179. 8

Gorham, 1.30 miles northeast of, at highway crossing, in base of danger signal; spike.....	Feet. 153
Gorham, 2 miles northeast of; highway crossing.....	116
Gorham, 2.80 miles northeast of, 1.10 miles southwest of Westbrook station, about 150 feet north of highway crossing, in southeast corner of base of block signal No. 1392; top of bolt.....	109.99
Westbrook station, 1,200 feet south of, at highway crossing; top of east rail..	73.3
Westbrook station, 100 feet south of, in switch stand; top of spike.....	63.77
Cumberland Mills, at railroad crossing; top of rail.....	70.7
Cumberland Mills, 0.20 mile west of, south side of track, west abutment of railroad bridge over Presumpscot River, in retaining wall; tablet stamped "69".....	68.599

Anson, Augusta, Bingham, Brassua Lake, Kingsbury, Moosehead, Norridgewock, Skowhegan, The Forks, Vassalboro, and Waterville quadrangles.

KENNEBEC, SOMERSET, AND PISCATAQUIS COUNTIES.

The elevations in the following list are based on tidal records of the Coast and Geodetic Survey at Portland. The work was previously based on Augusta datum from tidal records of the Coast and Geodetic Survey at Hallowell; but the results of a double-rodged line run in 1905 by the water-resources branch of the United States Geological Survey from Augusta to Brunswick, checking upon the Coast and Geodetic Survey gage bench marks at Abagadasset Point and Pleasant Point with a connection also at Moosehead from Penobscot River levels, showed considerable error. A line of precise levels was therefore run from Portland (where a more reliable sea-level value could be obtained) to Brunswick, from which was derived a correction of 2.651 feet to be added to the original unpublished values of the water-resources branch and 2.593 to be added to the original unpublished elevations of the bench marks on Augusta datum from Augusta to Moosehead. The closures upon Coast and Geodetic Survey gage bench marks by the water-resources branch line corrected to Portland datum are as follows: At Point Pleasant, +1.11 feet; at Abagadasset Point, +0.41 feet; at Hallowell bench mark 2, +2.651 feet; at Augusta, +4.608 feet.

A small discrepancy with levels brought by the topographic branch from Bangor up the Penobscot River, in 1904, to Norcross and thence by wye and water levels in the four succeeding years by the water-resources branch to Moosehead, has been adjusted to the leveling of the water-resources branch.

The leveling was done in 1903 and 1904 by F. J. McMaugh. Leveling in Kingsbury quadrangle and additional leveling in Anson and Skowhegan quadrangles was done in 1912 by K. E. Schlachter.

AUGUSTA QUADRANGLE.

[Latitude 44° 15'-44° 30'; longitude 69° 45'-70°.]

From Hallowell north along Maine Central R. R. to Augusta.

Hallowell, on south face of stone snubbing post of Granite Company's wharf; horizontal chisel mark ¹ (Coast and Geodetic Survey bench mark No. 1).....	Feet. 13. 804
Hallowell, Water Street (southeast) corner of cotton mill; horizontal chisel mark (Coast and Geodetic Survey bench mark No. 2; discarded elevation by Coast and Geodetic Survey equals 24.44 feet above mean water level).....	27. 091
Augusta, at northwest corner of west wing of state house; aluminum tablet stamped (reestablished in 1909 by the water-resources branch).....	152. 950
Augusta, in the upper and outer stone on top of the small ornamental tower, on the southwest corner of river wall around the arsenal; drilled hole ² ..	21. 168

VASSALBORO QUADRANGLE.

[Latitude 44° 15'-44° 30'; longitude 69° 30'-69° 45'.]

From Augusta north along Maine Central R. R. to Vassalboro.

Augusta, 4 miles northeast of, 865 feet north of milestone "66 and 185," in south granite abutment of railroad culvert; aluminum tablet stamped "34 Augusta".....	37. 046
Vassalboro, 4.5 miles south of, at sawmill, on top of stone culvert; chisel mark.....	51. 53
Vassalboro, stone culvert near milestone "73 and 183," Portland and Vassalboro, in southeast corner; aluminum tablet stamped "39 Augusta".....	42. 027
Vassalboro, in front of station; top of rail.....	57. 4

WATERVILLE QUADRANGLE.

[Latitude 44° 30'-44° 45'; longitude 69° 30'-69° 45'.]

From Vassalboro north along Maine Central R. R. to Goodwill.

Winslow, 0.5 mile south of, 5.5 miles north of Vassalboro, in east abutment of new bridge over Kennebec River; aluminum tablet stamped "53 Augusta".....	55. 584
Winslow, in front of station; top of rail.....	54. 8
Waterville, west side of canal, on grounds of Hollingsworth & Whitney, in stone wall; brass cap.....	78. 157
Waterville, east bank of river, 30 feet south of dam, 140 feet north of railroad bridge, in ledge marked "Top of flash boards"; copper bolt.....	52. 16
Shawmut, in west wall of engine house of the Lawrence Newhall plant; aluminum tablet stamped "113 Augusta".....	115. 226
Shawmut, in front of station; top of rail.....	126. 0
Goodwill Farm, in front of station; top of rail.....	119. 6
Hinckley, in front of station; top of rail.....	132. 6
Goodwill, 1.8 miles north of, in milestone "7 miles to Skowhegan, 95 miles to Portland"; aluminum tablet stamped "126 Augusta".....	128. 580

¹ This bench mark is assumed to have settled 0.344 foot, as found by checked connection with bench mark No. 2. Discarded elevation by Coast and Geodetic Survey equals 11.50 feet above mean water level.

² Elevation by the water-resources branch, United States Geological Survey, exact point of Coast and Geodetic Survey bench mark impossible to determine; discarded elevation by Coast and Geodetic Survey equals 16.56 feet above mean water level.

NORRIDGEWOCK QUADRANGLE.

[Latitude 44° 30'-44° 45'; longitude 69° 45'-70°.]

From Skowhegan southwest along Skowhegan & Norridgewock Electric Ry. to Norridgewock.

Norridgewock, in northeast corner of hotel; aluminum tablet stamped "199 Augusta".....	Feet. 201.854
Norridgewock, in front of station; top of rail.....	202.3

ANSON QUADRANGLE.

[Latitude 44° 45'-45°; longitude 69° 45'-70°.]

From Norridgewock north along Somerset Ry. to Anson.

Madison, in center of town, in underpinning of Odd Fellows block; aluminum tablet stamped "294 Augusta".....	297.035
Anson, in front of station; top of rail.....	263.4

From Madison east to Madison Center, thence north via North Madison to Solon.

Madison Center, at entrance to Lakewood Park (property of Somerset Traction Co.), at forks of road, in granite foundation of farmhouse; bronze tablet stamped "363 Augusta".....	365.627
North Madison, 540 feet south of first four of "Twelve Corners," on summit of small hill, west side of road, in flint ledge; bronze tablet stamped "622 Augusta".....	624.508
Solon, New Caratunk Hotel (J. H. Grey, owner), in granite underpinning of west corner; bronze tablet stamped "403 Augusta".....	405.416

From Solon west along public roads to Embden Center.

Embden Center, at three corners of road, in front of old house, east side of road; bronze tablet stamped "474 Augusta".....	476.681
---	---------

From Embden Center south along public road via North Anson to Anson.

North Anson, opposite road forks, in east face of southeast corner of granite underpinning of building owned by F. W. Bunker; aluminum tablet stamped "293 Augusta".....	295.658
North Anson, in front of station; top of rail.....	315.4

From point 3 miles north of Skowhegan along highway to Madison Center.

Skowhegan, 3 miles north of, along Madison Avenue, 100 feet south of entrance to home of Charles F. Davis, east side of road, in rock culvert; aluminum tablet stamped "487 Me".....	486.703
Skowhegan, 4 miles north of, along Madison Avenue, at northeast corner of crossroads, at White School; chiseled square on rock, marked "T. B. M. 503.3".....	503.15

SKOWHEGAN QUADRANGLE.

[Latitude 44° 45'-45°; longitude 69° 30'-69° 45'.]

At Skowhegan.

Skowhegan, in front of station; top of rail.....	172.8
Skowhegan, in corner of high school building, on island; aluminum tablet stamped "172 Augusta." (Reported as having the end defaced).....	174.484
Skowhegan, 0.3 mile south of station, on coping stone at west end of south abutment of railroad bridge; aluminum tablet stamped "176 Augusta".....	178.897

From Skowhegan northwest along highway 2.3 miles.

Skowhegan, 1.3 miles north of, electric railway bridge over Cold Brook, in northeast corner of concrete abutment; chiseled square, painted "T. B. M. 227.0".....	226.93
Skowhegan, 2.3 miles north of, along Madison Avenue, west side of road; chiseled square on rock, marked "319.2 T. B. M.".....	319.10

From point near Skowhegan northeast along highway to Athens, thence southeast via Corston Corner to Canaan, thence west to Skowhegan.

Skowhegan, 1.8 miles north of, along North Avenue (Athens road), at forks of Old Athens road, east side of road; copper nail in telephone pole, marked "T. B. M. 237.7".....	235.22
Skowhegan, 2.8 miles north of, along Athens road, in northwest corner of highway bridge over East Branch of Cold Brook; aluminum tablet stamped "198 Me".....	197.787
Skowhegan, 3.5 miles north of, on Hilton Hill, 400 feet north of C. B. White's house, east side of road; chiseled square on rock, marked "T. B. M. 361.9".....	361.82
Skowhegan, 4.5 miles north of, along Athens road, bridge over Devils Bog Brook, in stone at southeast corner; chiseled square, marked "T. B. M. 328.2".....	328.16
Revere School, northwest corner of crossroad, in rock; aluminum tablet stamped "414 Me".....	414.362
Revere School, 1.3 miles north of, along Athens road, 300 feet south of D. D. Collins's home, 20 feet east of center of road; chiseled square on rock, marked "T. B. M. 316.8".....	316.71
Revere School, 2.5 miles north of, along Athens road, 300 feet south of Ernest Fowler's home, 12 feet east of center of road; chiseled square on rock, marked "T. B. M. 357.5".....	357.42
Cass Corner, 0.8 mile south of, along Skowhegan road, 250 feet north of corner of E. Madison road, 15 feet east of road center, in stone; aluminum tablet stamped "348 Me".....	348.219
Cass Corner, 0.3 mile southwest of, along Skowhegan road, in Eaton's concrete water trough; chiseled square on basin, marked "T. B. M. 386.7".....	386.56
Cass Corner, 1,500 feet east of, along Athens road, 12 feet south of road; chiseled square on rock, marked "T. B. M. 407.5".....	407.42
Athens, in southeast abutment of bridge over Wesserunsett Stream; aluminum tablet stamped "344 Me".....	344.018
Athens, 1 mile southeast of, along Hartland road, south side of road; chiseled square on rock, marked "T. B. M. 431.2".....	431.11
Athens, 2 miles southeast of, along Hartland road, east side of road; chiseled square on rock, marked "T. B. M. 386.6".....	386.51
Athens, 2.5 miles southeast of, along Hartland road, west side of road at corner, in rock; aluminum tablet stamped "405 Me".....	405.341
Corston Corner, in southwest corner of crossroad; chiseled square on rock, marked "T. B. M. 267.4".....	267.26
Corston Corner, 1 mile south of, east side of road, 400 feet south of bridge over Black Stream; chiseled square on rock, marked "271.2 T. B. M.".....	271.10
Corston Corner, 2.5 miles south of, 1,500 feet south of Geo. O. Currie's home, 20 feet east of road, in rock; aluminum tablet stamped "284 Me".....	284.313
Gould's (Richard's) corner 750 feet north of McKinley School, east side of road at forks; chiseled square on rock, marked "T. B. M. 310.3".....	310.24
Gould's (Richard's) corner, 1 mile south of, in northwest corner of Mitchell's corner; chiseled square on rock, marked "316.3 T. B. M.".....	316.22

	Feet.
Mitchell's corner, 0.8 mile southeast of, along Canaan road, opposite C. H. Wheeler's home, west side of road, in rock; aluminum tablet stamped "320 Me".....	320.176
Brown School, opposite schoolhouse, at corner; chiseled square on rock, marked "T. B. M. 289.7".....	289.53
Canaan, 2.8 miles north of, along Horseback road, opposite E. S. Damon's home, west side of road, in rock; aluminum tablet stamped "298 Me".....	298.076
Canaan, 1 mile north of, along Horseback road, east side of road; chiseled square on rock marked "T. B. M. 281.0".....	280.90
Canaan, in northeast corner of bridge over Canaan (Carrabassett) Brook, in concrete coping; aluminum tablet stamped "235 Me".....	235.336
Canaan, 0.5 mile west of, along Skowhegan road, in front of Geo. F. Barrett's home; chiseled square on rock marked "325.4 T. B. M.".....	325.23
Canaan, 2 miles west of, along Skowhegan road, at corner, south side of road; chiseled square on rock, marked "T. B. M. 331.9".....	331.79
Canaan, 3 miles west of, along Skowhegan road, at southeast corner, in rock; aluminum tablet stamped "286 Me".....	285.891
Skowhegan, 4 miles east of, along Canaan road, in southwest corner of crossroads, chiseled square on rock, marked "T. B. M. 444.9".....	444.77
Skowhegan, 3.3 miles east of, along Canaan road, 0.4 mile east of Wesserunsett Bridge, south side of road; chiseled square on rock, marked "T. B. M. 199.1".....	198.93
Skowhegan, 2 miles east of, in southeast end of coping of Wesserunsett Bridge; aluminum tablet stamped "130 Me.".....	129.957
Skowhegan, 1 mile east of, along Canaan road, at forks of Parkman Hill road, south side of road; chiseled square on stone, marked "143.9".....	143.75
From Athens via circuitous course northwest to West Athens, thence north to Garfield School, thence northeast and southeast to Harmony, thence south and southeast to Corston Corner. Part of line.	
Athens, 1.8 miles northwest of, along West Athens road, at foot of mail box in front of old house; chiseled square on rock, marked "414.9".....	414.76
Athens, 2.2 miles northwest of, along West Athens road, 600 feet east of Bradbury Brook, south side of road; chiseled square on rock, marked "377.9".....	377.75
West Athens, 180 feet north of corner, at mill, 25 feet west of road, in ledge; aluminum tablet stamped "465 Me.".....	464.825
Lincoln School, 1.5 miles north of West Athens, in doorstep; aluminum tablet stamped "548 Me.".....	548.154
Lincoln School, 0.8 mile east of, north side of road; chiseled square on rock, marked "T. B. M. 579.0".....	578.87
Lincoln School, 2.2 miles east of, 350 feet east of Geo. Leavitt's home, north side of road; chiseled square on rock, marked "T. B. M. 774.9".....	774.74
Garfield School, in northwest corner of crossroad, in rock; aluminum tablet stamped "842 Me.".....	842.146
Garfield School, 1.2 miles east of, south side of road; chiseled square in rock, marked "T. B. M. 736.3".....	736.11
Garfield School, 1.5 miles east of, south margin of road; chiseled square on ledge, marked "T. B. M. 664.3".....	664.17
Harmony, 1.5 miles north of, along North road, west side of road; chiseled square on rock, marked "T. B. M. 384.2".....	384.01
Harmony, at three forks north of, west side of road; chiseled square on rock, marked "T. B. M. 355.1".....	354.87

Harmony, in northeast abutment of highway bridge over Higgins Brook; bronze tablet stamped "312 Me".....	Feet. 312. 213
Harmony, 1.4 miles south of, at Hurd School, east side of road; chiseled square on rock, marked "T. B. M. 398. 0".....	397. 79
Hurd School, 1.2 miles west of, along Skowhegan road, north side of road, in rock; aluminum tablet stamped "391 Me".....	391. 211
Hurd School, 2.5 miles west of, along Skowhegan road, 40 feet north of road; chiseled square on rock, marked "375.0 T. B. M.".....	374. 76
Corston Corner, 1.8 miles northeast of, along Harmony road, 100 yards east of crossroads, 35 feet south of road in field, in rock; aluminum tablet stamped "305 Me".....	304. 494
Corston Corner, 0.5 mile northeast of, along South Harmony road, south side of road, chiseled square on rock, marked "T. B. M. 279.4".....	279. 14

KINGSBURY QUADRANGLE.

[Latitude 45°-45° 15'; longitude 69° 30'-69° 45'.]

Portion of circuit from Athens to Corston Corner.

Garfield School, 2 miles east of, in southeast corner of crossroads (over Dore Hill), 10 yards from intersection, in rock; bronze tablet stamped "619 Me".....	618. 736
Garfield School, 3 miles east of, at corner near small cemetery, on east side of road; chiseled square on rock, marked "657.1 T. B. M.".....	656. 88
Klondike School, 0.5 mile northeast of, north side of road; chiseled square on rock, marked "464.6 T. B. M.".....	464. 42
Klondike School, 0.8 mile east of, at junction with North road, northeast end of highway retaining wall, in rock; bronze tablet stamped "472 Me"....	471. 413

BINGHAM QUADRANGLE.

[Latitude 45°-45° 15'; longitude 69° 45'-70°.]

From Solon north along Somerset Ry. to Bingham.

Bingham, 3 miles south of, 7 miles north of Solon, right side of road, in boulder; bronze tablet stamped "376 Augusta".....	378. 216
Bingham, bridge over Austin Stream, in south end of east abutment; bronze tablet stamped "367 Augusta".....	369. 334
Bingham, in front of station; top of rail.....	351. 8

From Bingham north along highway to Carritunk.

Bingham, 6.5 miles north of, in southeast corner of George Gordon's house; bronze tablet stamped "434 Augusta".....	436. 434
Briggs Ferry, 600 feet north of (10.6 miles north of Bingham), right side of road, in ledge of rocks; bronze tablet stamped "451 Augusta".....	453. 669
Carritunk, 1,000 feet south of post office, right of road, in rock ledge; bronze tablet stamped "588 Augusta".....	590. 384

From Bingham northeast along Somerset Ry. to Austin Pond and Moxie Pond.

Bingham, 5 miles northeast of, in rock wall at Chamberlain Hill; aluminum tablet stamped "1324 Augusta" (bench mark on old line was unrecovered and elevation may be 3 feet too great).....	1, 326. 534
Deadwater station, 3.7 feet east of southwest corner of tank house in granite underpinning; aluminum tablet stamped "1001 Augusta".....	1, 003. 500
Austin Pond, 100 feet east of main camp, 40 feet south of road to pond, in boulder; aluminum tablet stamped "1190 Augusta".....	1, 192. 464

THE FORKS QUADRANGLE.

[Latitude 45° 15'-45° 30'; longitude 69° 45'-70°.]

From Carritunk north along road via The Forks to Indian Pond.

	Feet.
The Forks, 2.5 miles south of, 5.2 miles north of Carritunk, 2,000 feet north of Ed. Morris's house, east side of road, in ledge of rocks; aluminum tablet stamped "576 Augusta".....	579. 066
The Forks, east end of bridge over Kennebec River, in granite abutment; bolt.....	577. 33
The Forks, 3 miles north of, west side of river, 300 feet south of Cold Stream, in rock ledge; aluminum tablet stamped "611 Augusta".....	614. 090
The Forks, 10.2 miles north of, north bank of Chase Stream at mouth, in rock ledge; aluminum tablet stamped "757 Augusta".....	760. 062
Indian Pond, east bank of river near southeast corner of dam, in rock ledge; aluminum tablet stamped "933 Augusta".....	936. 013

From The Forks east to lower (north) end of Moxie Pond, thence by water levels to upper end.

The Forks, 3 miles east of, 320 feet east of Ed. Croto's house, south side of road, in large bowlder; aluminum tablet stamped "901 Augusta".....	903. 261
Moxie Pond, north end of, at upper dam, in ledge at east side of Moxie Stream, 90 feet northeast of sluice gate; aluminum tablet stamped "959 Augusta".....	961. 259
Moxie Pond, on west bank of Baker Stream, 50 feet east of railroad location, in ledge; aluminum tablet stamped "963 Augusta".....	966. 060

BRASSUA LAKE QUADRANGLE.

[Latitude 45° 30'-45° 45'; longitude 69° 45'-70°.]

From Indian Lake northeast along north side of Indian Pond to Moosehead.

Marrs Camp, north end of Indian Pond, 6.1 miles north of dam, at side of road, in rock ledge; aluminum tablet stamped "946 Augusta".....	948. 300
--	----------

MOOSEHEAD QUADRANGLE.

[Latitude 45° 30'-45° 45'; longitude 69° 30'-69° 45'.]

At Moosehead.

Moosehead, southeast corner of east abutment of Canadian Pacific Ry. bridge over east outlet of Moosehead Lake; aluminum tablet ¹ stamped "1026 Augusta".....	1, 028. 154
Moosehead Lake, low water of October, 1903; surface.....	1, 022. 0
Moosehead Lake; high water (from information by proprietor of Outlet House).....	1, 028. 7

Buckfield, Lewiston, Livermore, and Poland quadrangles.

ANDROSCOGGIN, CUMBERLAND, FRANKLIN, KENNEBEC, OXFORD, AND SAGadahoc COUNTIES.

The elevations in the following list are based on bench marks of the double-rodged line of the Androscoggin River survey (water-resources branch United States Geological Survey), corrected in accord with the precise-level line of the topographic branch from Portland to Brunswick; and such of those bench marks as come in these quadrangles are included in the list.

¹ Elevation as brought by careful wye and water levels from Bangor, 1,028.223—a closure of 0.069, which can be thrown to water levels and the Penobscot and these corrected Kennebec levels from Portland can be considered as adjusted.

The leveling was done in 1905 and 1906 by F. J. McMaugh, additional leveling in Buckfield quadrangle was done in 1910 by H. P. Kilby and in Livermore quadrangle in 1910 by Charles Hartman.

LEWISTON QUADRANGLE.

[Latitude 44°-44° 15; longitude 70°-70° 15'.]

From Lisbon Falls northwest along Maine Central R. R. to Lewiston, thence north to Keens Mills,¹

	Feet.
Lisbon Falls, in ledge about "10½ miles to Lewiston," side of river opposite lower end of Frosts Park; aluminum tablet (permanent bench mark No. 7)	111. 231
Dingley farm, in large boulder near north line, east of road about 300 feet; aluminum tablet (permanent bench mark No. 9).....	265. 527
Babbett & Googin dam, in high point of ledge below (this ledge is in bed of river and is an island during high water); aluminum tablet (permanent bench mark No. 10).....	225. 889

From Lewiston northeast along Maine Central R. R. to Leeds Junction, thence south along Maine Central R. R. to Lisbon.

Lewiston, in south wall 50 feet north of west end of dam No. 4, Union Waterworks Co.; point "S".....	170. 61
Lewiston, near end of railroad bridge over canal, southwest corner of Bates cotton mill, on foundation.....	148. 400
Lewiston, in south face of southwest corner of post-office building; aluminum tablet stamped "Augusta 196".....	196. 000
Lewiston, opposite baggage room at upper station; north rail.....	205. 1
Lewiston, 2.8 miles north of, west side of track, in milestone "V 215"; aluminum tablet stamped "Augusta 228".....	227. 852
Lewiston, 5.8 miles north of, in milestone "V 212;" aluminum tablet stamped "Augusta 275".....	275. 312
Greene, in front of station; top of rail.....	302. 0
Greene, 0.25 mile north of, in ledge; aluminum tablet stamped "293 Augusta".....	292. 611
Leeds, in front of station; top of west rail.....	271. 2
Leeds, 0.25 mile south of, in milestone "V 207"; aluminum tablet stamped "Augusta 281".....	281. 194
Wales, in front of station, at crossing; top of rail.....	255. 4
Leeds Junction, 3 miles south of, in east face of south wall of stone culvert; aluminum tablet stamped "Augusta 254".....	253. 925
Sabattus, 330 feet east of station, north of track, in large boulder; aluminum tablet stamped "Augusta 266".....	265. 797
Sabattus, in front of station; top of rail.....	262. 3
Webster woolen mills, Sabattus River; top of dam.....	215. 8
Crowleys Junction, south end of west abutment.....	188. 324
Crowleys Junction, north end of east abutment of railroad bridge; aluminum tablet stamped "189 Augusta".....	189. 108
Crowleys, in front of station; top of east rail.....	191. 2
Crowleys, 1.2 miles from junction, at Moody Brook, in east wall, at south end of granite abutment.....	186. 683
Lisbon, in front of station; top of east rail.....	199. 8
Lisbon, in front of office building of Farwell mills, 9 feet from northwest corner, 160 feet from junction of Main and Farwell streets; aluminum tablet stamped "185 Augusta".....	184. 801

¹ Bench marks by water-resources branch.

From Lewiston southwest along the Grand Trunk Ry. and the Maine Central R. R. to Rumford Junction.

	Feet.
Auburn, main track of Grand Trunk Ry.; top of south rail.....	147. 5
Rumford Junction, east of track, in milestone "Portland 32 miles, Vanceboro 221 miles"; aluminum tablet stamped "205 Augusta".....	205. 210

POLAND QUADRANGLE.

[Latitude 44°-44° 15'; longitude 70° 15'-70° 30'.]

From Rumford Junction west to Poland, thence north to Buckfield.

Lewiston Junction, 1 mile north of, north end of east abutment of Maine Central R. R. bridge; aluminum tablet stamped "280 Augusta".....	280. 381
Elmwood Farm station; top of east rail.....	300. 7
Poland Spring station; top of east rail.....	322. 7
Poland, in front of station; top of rail.....	313. 0
Poland, 1.7 miles north of station, 475 feet south of milepost, in west end of south wall of culvert; aluminum tablet stamped "284 Augusta".....	283. 725
Mechanic Falls, in front of Maine Central R. R. station; top of west rail....	303. 4
Mechanic Falls, 1 mile north of, 420 feet north of railroad crossing, west end of south abutment of Maine Central R. R. bridge over Bog Brook; aluminum tablet stamped "267 Augusta".....	267. 237
West Minot, main track in front of station; top of west rail.....	347. 1
West Minot, 250 feet north of station, 50 feet south of highway bridge, 80 feet west of track, in rock ledge; aluminum tablet stamped "334 Augusta"....	334. 356
East Hebron, 875 feet north of railroad crossing at station, 75 feet west of railroad track, in large boulder; aluminum tablet stamped "348".....	347. 889

From Poland southwest to west Poland, thence north via water leveling to Oxford, thence north 3.6 miles.

Poland, 2.2 miles from, 18 feet south of road and 750 feet east of road on east side of Tripp Pond; aluminum tablet stamped "343".....	343. 073
Tripp Pond, July 7, 1906, 11.30 a. m.; surface of water.....	305. 5
West Poland, 1 mile west of, large boulder 70 feet west of bridge over Potash Brook, 25 feet north of road, 360 feet west of house owned by G. D. Russell; aluminum tablet stamped "33".....	332. 977
Thompson Lake, July 9, 1906, 3.25 p. m.; surface of water.....	324. 7
Oxford, ledge on Walker property, 100 feet west of northwest corner of school, 15 feet west of fence, 350 feet northwest of hotel; aluminum tablet stamped "348".....	348. 340
Oxford, 3.6 miles north of, 500 feet north of Gilman's crossing, 280 feet east of highway, on property of A. O. Lovering; aluminum tablet stamped "363".....	363. 348

From South Paris east 5 miles along road to Buckfield.

South Paris, 2.1 miles east of, west bank of Stony Brook, 25 feet north of bridge and 85 feet northeast of road forks, in ledge; aluminum tablet stamped "479".....	478. 783
South Paris, 4.9 miles east of, east of road, in pasture, and 130 feet southeast of four corners, in ledge; aluminum tablet stamped "1015".....	1, 014. 906
Hebron, 40 feet southeast of corner of H. T. Glove livery barn, 60 feet northeast of center of highway, in rock ledge; aluminum tablet stamped "576".....	576. 129

BUCKFIELD QUADRANGLE.

[Latitude 44° 15'-44° 30'; longitude 70° 15'-70° 30'.]

From point 5 miles east of South Paris northeast to Buckfield, thence east to Turner.

	Feet.
Buckfield, 2.6 miles west of, north side of road, in angle of fence, 330 feet west of house belonging to Greene Turner, in large boulder; aluminum tablet stamped "826".....	826. 376
Buckfield, in second course from top, at east end of south abutment of railroad bridge over Twentymile River; aluminum tablet stamped "364".....	364. 259
Turner, top of coping at north end of dam, 2 feet south of face of retaining wall and 2.5 feet west of downstream face of dam; aluminum tablet stamped "303".....	302. 903

From Buckfield north along Maine Central R. R. to Gilbertville.

Buckfield, 1 mile north of, east side of track; spike in milepost "Rumford Falls 27 M.; Portland 57 M.".....	372. 39
Buckfield, 2 miles north of, east side of track; spike in milepost "Rumford Falls 26 M.; Portland 58 M.".....	373. 86
Buckfield, 3 miles north of, east side of track; spike in base of milepost "Rumford Falls 25 M.; Portland 59 M.".....	381. 31
Buckfield, 4 miles north of, east side of track; spike in base of milepost "Rumford Falls 24 M.; Portland 60 M.".....	392. 68
East Sumner, northeast abutment of Maine Central R. R. bridge over east branch Nezinscot River; aluminum tablet stamped "391".....	390. 998
East Sumner, 1 mile north of, east side of track; spike in milepost "Rumford Falls 22 M.; Portland 62 M.".....	455. 39
Hartford station, 150 feet north of, east abutment of railroad culvert; aluminum tablet stamped "468".....	467. 887
Hartford, 1 mile north of, east side of track; spike in milepost "Rumford Falls 20 M.; Portland 64 M.".....	486. 05
Hartford, 2 miles north of, east side of track; spike in milepost "Rumford Falls 19 M.; Portland 65 M.".....	463. 99
Hartford, 3 miles north of, east side of track; spike in milepost "Rumford Falls 18 M.; Portland 66 M.".....	420. 98
Lake Anasagunticook, surface of water, Sept. 5, 1910.....	403. 3
Canton, Maine Central R. R. crossing at station; spike in plank of crossing.....	403. 87
Canton, northwest corner of Baptist church, on water table; aluminum tablet stamped "409 Me.".....	408. 671
Canton, 1 mile north of, north side of track; spike in milepost "Rumford Falls 16 M.; Portland 69 M.".....	392. 359
Gilbertville, set in southwest corner of highway bridge; aluminum tablet (Old elevation 395.591).....	395. 591

From Dixfield to Dickvale along highways and return.

Dixfield, in southwest bridge seat of highway bridge over Androscoggin River between West Peru and Dixfield; aluminum tablet stamped "411 Me.".....	411. 482
West Peru, 500 feet north of church, at intersection of roads; paint mark on stone post.....	439. 26
West Peru, 0.9 mile south of, 100 feet north of D. L. Chenery's residence, west side of highway; paint mark on rock.....	516. 78
West Peru, 1.2 miles southeast of, at intersection of roads; paint mark on rock.....	509. 40
Dickvale, 75 feet east of schoolhouse, 75 feet east of highway, set in large boulder in field of E. C. Chase; tablet stamped "510".....	510. 189

From East Sumner to Sumner along highways and return.

	Feet.
East Sumner; set in northeast abutment of Maine Central R. R. bridge over east branch of Nezinscot River; aluminum tablet stamped "391".....	390.998
East Sumner, 1 mile west of, 200 feet west of cemetery, at crossroads; paint mark on rock.....	412.18
Sumner, 1 mile southwest of, 50 feet north of highway, at south side of Labradore Pond, set in rock; aluminum tablet stamped "474".....	474.078

From Canton along highways to a point 3 miles east of. (Unchecked spur.)

Canton, northwest corner of Baptist Church, set in water table; aluminum tablet stamped "Maine 409".....	408.755
Canton, 0.9 mile east of: paint mark on rock at intersection of roads.....	404.925
Canton, 2 miles east of, 500 feet east of schoolhouse; paint mark on rock at north side of road.....	421.636
Canton, 3 miles east of, 1,000 feet west of Emerson Poland's residence, set in large boulder at northeast side of highway; aluminum tablet stamped "491".....	491.076

NOTE.—The above line is roughly checked by secondary levels.

Near Buckfield.

Buckfield, 3.3 miles east of, 35 feet north of road, 125 feet east of house owned by H. D. Irish, 130 feet west of culvert over brook, in ledge; aluminum tablet.....	322.008
---	---------

LIVERMORE QUADRANGLE.

[Latitude 44° 15'-44° 30'; longitude 70°-70° 15'.]

From Keens Mills Cemetery east, north, and west along highways via Dead River, Wayne, Fayette, and Twelve Corners to Livermore Falls.

Keens Mills Cemetery, 0.2 mile north of, in orchard of Edward Pratt, 500 feet north of house, and 150 feet east of highway; aluminum tablet stamped "283".....	283.111
Leeds Center, 2.5 miles west of, at intersection of T road running north; paint mark on top of boulder, marked "363".....	362.72
Leeds Center, 1.5 miles west of, 150 feet northwest of road corners, set in 3 by 3 by 2 feet boulder in field; aluminum tablet stamped "328 Me."...	327.974
Leeds Center, 50 feet east of store at road corners; nail in telephone pole, marked "304".....	303.94
Leeds Center, 0.4 mile north of, 500 feet southwest of cemetery, 100 feet north of road corners; paint mark on large boulder, marked "308".....	308.39
Dead River station, 600 feet south of, set in northwest abutment of Maine Central R. R. bridge; aluminum tablet stamped "280 Me.".....	279.762
Dead River station, 1,200 feet northeast of, 40 feet northeast of road corners; paint mark on top of large boulder, marked "291".....	290.99
Wayne, southwest corner of Baptist Church, set in water table; aluminum tablet stamped "299 Me.".....	299.106
Four Corners, 2 miles north of Wayne; paint mark northeast corner of lower step of schoolhouse, marked "360".....	360.13
Wayne, 3 miles north of, set in top of large boulder at southwest corner of four corners of roads; aluminum tablet stamped "407 Me.".....	406.640
Wayne, 3.8 miles north of, at junction of T roads, 0.4 mile west of pond; paint mark on rock, marked "461".....	461.29
Wayne, 5 miles north of, west side of road, opposite white house, top of rise in road; paint mark on ledge of rock, marked "496".....	496.02

Wayne, 6 miles north of, 0.2 mile southeast of Fayette village, 250 feet south of four corners, set in ledge of rock on west side of road; aluminum tablet stamped "542 Me.".....	Feet. 542.046
Fayette Village, 900 feet south of church, south side of road at forks of roads, in front of large yellow house; paint mark on rock marked "601".....	601.15
Fayette, 1 mile north of, west side of road, opposite white house 500 feet distant above base of hill; paint mark on rock, marked "488".....	488.31
Fayette, 2 miles north of, 20 feet south of Fayette Ridge schoolhouse, at 4 corners of roads; paint mark on rock, marked "726".....	725.53
Twelve corners, northeast corner of 4 corners, northwestern portion of 12 corners, 60 feet southeast of white house, in ledge of rock; aluminum tablet stamped "372".....	372.422
Livermore Falls, 3 miles east of, at forks of roads, top of hill, 0.2 mile west of pond; paint mark on rock, marked "529".....	528.56
Livermore Falls, 1 mile south of, in center of 4 corners; paint mark on top of southeast corner of stone watering trough, marked "305".....	304.78
Livermore Falls, southeast corner of post office in brick building, set in water table; aluminum tablet stamped "349".....	349.355

Bethel, Bryant Pond, Fryeburg, Kezar Falls, and Norway quadrangles.

CUMBERLAND, OXFORD, AND YORK COUNTIES.

The leveling was done in Bethel quadrangle in 1908 by C. K. Alexander, in 1911 by K. F. Maxcy, in 1912 by K. E. Schlachter, in Bryant Pond and Norway quadrangles in 1911 by Maxcy, in Fryeburg and Kezar Falls quadrangles in 1909 by E. B. Hillegass.

BETHEL QUADRANGLE.

[Latitude 44° 15'–44° 30'; longitude 70° 45'–71°.]

From point 2 miles east of Bethel to Bethel and north to Androscoggin River.

Bethel, 2 miles east of, north side of east abutment of railroad bridge; aluminum tablet stamped "655".....	Feet. 654.595
Bethel, 0.8 mile east of; nail in top of; milepost "69–228", marked "660".....	659.65
Bethel; top of south rail near west end of station platform, marked "654".....	653.5
Androscoggin River, highway bridge over, between Mayville and Bethel, in west end of south abutment; aluminum tablet stamped "648".....	647.566

From Bethel south to point near Lynchville. (Parts of two lines.)

Bethel, corner of High and Main streets, in front of C. C. Bryant & Son's store, rock at foot of telephone pole, marked "684".....	683.70
Bethel, junction of Elm Street with street south of common; southwest corner on rock, marked "727".....	726.86
Bethel, 0.8 mile south of station, road fork, northeast corner of street; chisel mark on rock, marked "655".....	655.04
Bethel, 2 miles south of railway station, 650 feet north of residence of Robert Clough, east of road; top of boulder, marked "717".....	716.27
Bethel, 3 miles south of, 75 feet north of Albany-Bethel town line, northeast corner of road fork at north end of Songo Pond; nail in root of tree, marked "659".....	658.10
Songo Pond; surface of water, Sept. 2, 1911.....	649.8
Songo Pond, near south end of, west of road, in top face of large boulder; aluminum tablet stamped "663".....	662.712

Songo Pond, just south of, northwest corner of road fork; paint mark on stone marked "659".....	Feet. 658.70
Albany town house, 1.3 miles north of, at northwest corner of road forks, paint mark on rock, marked "651".....	650.35
Albany town house, at southwest corner of crossroads; chisel mark on rock, marked "647".....	646.963
Albany town house, 0.8 mile south of, west of road near Carter Grover's residence, in rock ledge; aluminum tablet stamped "643".....	642.926
Albany town house, 1.2 miles south of, second-class road fork; point on rock, marked "622".....	621.63
Albany town house, 2.1 miles south of, bridge over Crooked River; point on planking on east side, marked "586".....	585.36
Lynchville, 2.5 miles north of, 275 feet north of bridge over Crooked River, in rock ledge on west side of road; aluminum tablet stamped "573"....	572.80
From Bethel along highway north to North Bethel, thence northwest to Ketchum. (Double spur.)	
Bethel, 1 mile north of, west side of North Bethel road, 150 feet north of Leland Bartlett's residence; chiseled square on bed rock, marked "T. B. M. 665.9".....	665.86
Bethel, 2 miles north of, west side of North Bethel road, 25 feet north of old water trough; chiseled square on rock culvert, marked "T. B. M. 646.8".....	646.83
North Bethel, on west side of road at road fork, in concrete culvert; aluminum tablet stamped "645 Me".....	644.598
North Bethel, 1.1 miles north of, east side of Sunday River road; chiseled square on stone culvert, marked "T. B. M. 649.5".....	649.57
North Bethel, 2.4 miles north of, 100 feet east of center of Sunday River road, 100 feet north of James J. Spinney's residence; chiseled square on rock, marked "T. B. M. 677.6".....	677.65
Artists Bridge crossing Sunday River, in southeast corner of; aluminum tablet stamped "693 Me".....	693.239
Artists Bridge over Sunday River, 1.1 miles west of, south side along Ketchum road, 200 feet west of David Fleet's residence; chiseled square on rock, marked "T. B. M. 725".....	725.03
Artists Bridge over Sunday River, 2.3 miles west of, south of Ketchum road, 100 feet east of Louis Eamos's home, 15 feet south of center of road; chiseled square on rock, marked "T. B. M. 789.9".....	789.96
Ketchum, 0.5 mile east of, south side of North Bethel road, 160 feet east of town line, in rock; aluminum tablet stamped "Me 863".....	863.737
From West Bethel south along highway to Bennett's Bridge over Pleasant River. (Double spur.)	
West Bethel, 0.5 mile west of, along Gorham road, in northeast corner of bridge over Pleasant River; aluminum tablet stamped "656".....	655.764
West Bethel, 1.4 miles south of, along Pleasant River road, east side of road, about 300 feet north of house; copper nail in stump, marked "T. B. M. 673.1".....	673.12
West Bethel, 2.1 miles south of, along Pleasant River road, east side of road; copper nail in stump, marked "T. B. M. 677.8".....	677.71
Meadow Brook Bridge, in southwest corner of; aluminum tablet stamped "Me 673".....	672.478
Meadow Brook Bridge, 1 mile west of, north side of road to Bennett's; chiseled square on rock, marked "T. B. M. 723.8".....	723.67

	Feet.
Meadow Brook Bridge, 2 miles west of, north side of road to Bennett's, a little southwest of Solomon Westleigh's house; chiseled square on rock marked "T. B. M. 816.6"	816. 51
Bennetts Bridge over Pleasant River, near, at southeast corner of, in stone; aluminum tablet stamped "858 Me"	857. 696
From Gilead south along highway to point 3 miles south of Hastings. (Double spur.)	
Gilead, 0.2 mile west of, in northeast corner of Grand Trunk Ry. bridge over Wild River; aluminum tablet stamped "712 Me"	712. 052
Gilead, 1 mile south of, opposite old camp, west side of Hastings road; chiseled square on rock, marked "T. B. M. 728.7"	728. 65
Gilead, 2 miles south of, west side of Hastings road; chiseled square on rock, marked "T. B. M. 795.0"	794. 86
Hastings, northeast corner of scales in front of office, in rock; aluminum tablet stamped "839 Me"	839. 232
Hastings, 1.2 miles south of, west side of Evans Brook tote road; copper nail in tree stump, marked "T. B. M. 891.7"	891. 60
Hastings, 2 miles south of, west side of Evans Brook tote road; chiseled square on rock, marked "T. B. M. 957.7"	957. 66
Hastings, 3 miles south of, east of Evans Brook tote road, 50 feet below old dam, in bedrock; aluminum tablet stamped "1041 Me"	1, 040. 491

BRYANT POND QUADRANGLE.

[Latitude 44° 15'-44° 30'; longitude 70° 30'-70° 45'.]

From South Paris northwest along Grand Trunk Ry. to point 2 miles east of Bethel.

South Paris, 2 miles north of, east of track; copper nail in top of milepost 49-248, marked "414"	413. 55
South Paris, 2.4 miles north of, east side of north abutment of railroad bridge, in granite capstone; aluminum tablet stamped "409"	408. 582
South Paris, 4 miles north of, east of track; nail in top of milepost 51-246, marked "414"	413. 93
South Paris, 5.1 miles north of, 330 feet north of milepost 52-247; spike driven in side of "W" post, marked "419"	418. 51
Snow Falls, at road crossing, at milepost P 53-M 244, west of track, in face of ledge; aluminum tablet stamped "462"	461. 442
Snow Falls, 1 mile north of; nail in top of milepost 54-243, marked "478" ..	477. 68
West Paris, 350 feet south of station, east side of north abutment of railroad bridge, in granite capstone; aluminum tablet stamped "486"	485. 984
West Paris, 0.8 mile north of, in top of signal wire post opposite milepost 56-241; nail marked "496"	496. 19
West Paris, 3 miles north of, 215 feet north of milepost 58-239, 215 feet south of Greenwood road crossing, in ledge west of track; aluminum tablet stamped "577"	576. 700
West Paris, 3.8 miles north of; nail in top of milepost 59-238, marked "634" ..	633. 88
West Paris, 4.8 miles north of; nail in south side of milepost 60-237, marked "695"	694. 35
Bryant Pond, 0.4 mile south of, 825 feet north of milepost 61-236, 40 feet north of road crossing; nail in top of switch stand west of track, marked "714"	713. 74
Bryant Pond, 0.4 mile west of, just west of secondary grade crossing near residence of Amanda Sheeran, in top of boulder north of track; aluminum tablet stamped "720"	719. 768
Bryant Pond, 1.3 miles west of, 400 feet west of milepost 63-234; copper nail in south side of railroad culvert, marked "728"	728. 23

	Feet.
South Pond; surface of water, Aug. 3, 1911.....	719. 0
Bryant Pond, 2.3 miles west of; nail in top of milepost 64-233, marked "729".....	728. 76
Round Pond; surface of water, Aug. 3, 1911.....	719. 0
Locke Mills, in front of station; top of rail, marked "726".....	725. 33
Locke Mills, about 400 feet north of station, about 100 feet west of Mount Abram Hotel, in face of ledge; aluminum tablet stamped "753".....	752. 793
Locke Mills, 2 miles west of, 231 feet east of milepost 67-229; copper nail in road crossing, marked "680".....	679. 79

NORWAY QUADRANGLE.

[Latitude 44°-44° 15'; longitude 70° 30'-70° 45'.]

Near South Paris.

South Paris, 1.4 miles south of, south end of east wall of granite arch culvert; aluminum tablet stamped "376".....	376. 407
South Paris, 1 mile south of, east of track; copper nail in top of milepost 46-251, marked "382".....	382. 13
South Paris, 0.8 mile south of, railway bridge over Little Androscoggin River, south end of; top of west rail, marked "377".....	377. 37
South Paris, in front of station; top of west rail of main track, marked "392".....	392. 20
South Paris, 1 mile north of, east of track; nail in top of milepost 48-249, marked "393".....	393. 43

KEZAR FALLS QUADRANGLE.

[Latitude 43° 45'-44°; longitude 70° 45'-71°.]

From point near Porter north along highways to Fryeburg.

Porter, 1.2 miles west of, north side of road, in rock; aluminum tablet stamped "399".....	398. 873
Porter, 3.3 miles northwest of, at fork of roads, in large rock, southwest corner of forks; aluminum tablet stamped "496".....	495. 815
Rands School, 6.5 miles northwest of Porter, west of road, opposite school-house, in rock ledge; aluminum tablet stamped "875".....	875. 374
Brownfield station, 3.8 miles southwest of, in large rock north of road; aluminum tablet stamped "515".....	514. 969
Brownfield, 3 miles west of station, at southeast corner of road crossing, on granite post; paint mark "481.6".....	481. 69
Fryeburg, 3.9 miles south of, on west side of road, in large rock; aluminum tablet stamped "493".....	493. 458

From Cornish northwest along Maine Central R. R. to Fryeburg. (Mean of two runnings.)

Cornish station, on Maine Central R. R.; spike in east end of crossing planks, marked "300".....	299. 98
West Baldwin, 600 feet east of station; spike in east end of railroad-crossing planks, marked "346".....	345. 52
Bridgton Junction, 1 mile southeast of, at northeast side of railroad, in top face of culvert stone; aluminum tablet stamped "356".....	355. 538
Hiram, 2 miles west of, south side of railroad, in top face of southeast abutment of small bridge; aluminum tablet stamped "398".....	396. 596
East Brownfield (Brownfield station), at southeast corner of station, in top face of large embedded rock; aluminum tablet stamped "400".....	398. 935
East Brownfield (Brownfield station), 3 miles northwest of, at crossing of brook, in top face of south side of east abutment of bridge; aluminum tablet stamped "386".....	384. 820

FRYEBURG QUADRANGLE.

[Latitude 44°-44° 15'; longitude 70° 45'-71°.]

From Fryeburg northeast along highways to West Bridgton, thence northwest to Lovell.

Fryeburg, at corner of Main and Portland streets, in east face of monument; aluminum tablet stamped "429".....	Feet. 429. 245
Fryeburg, 2.7 miles northeast of, south of road in large rock; aluminum tablet stamped "478".....	478. 300
East Fryeburg, at northeast corner of road crossing, in southwest corner of Mount Pleasant Band hall; aluminum tablet stamped "486".....	486. 606
West Bridgton, in southwest corner of schoolhouse, north of road; aluminum tablet stamped "516".....	515. 994
Lovell, 2.9 miles southeast of, in southeast corner of Black Mountain schoolhouse; aluminum tablet stamped "549".....	549. 226
Lovell, 0.2 mile north of road forks, in front of C. K. Chapman's residence, in rock of stone wall; aluminum tablet stamped "439".....	439. 425

From Lovell northeast and north along highways to Lynchville.

Sweden Corner, at northwest corner of road crossing, in southeast corner of stone wall of O. P. Saunders's residence; aluminum tablet stamped "692".....	692. 067
East Sweden, in southeast corner of stone wall of schoolhouse; aluminum tablet stamped "568".....	568. 263
North Waterford, 4 miles south of, in southeast corner of stone wall of schoolhouse; aluminum tablet stamped "963".....	963. 723
North Waterford, 2.7 miles southeast of, west of road, opposite John Tubb's residence, in large rock; aluminum tablet stamped "797".....	797. 533
North Waterford, in stone wall at northwest corner of Congregational Church; aluminum tablet stamped "650".....	650. 884
Lynchville, on foundation stone on north side at east end of bridge over Crooked River; paint mark "555.7".....	554. 122

From Fryeburg north along highways to North Fryeburg, thence east to Lovell, thence north to East Stoneham.

Fryeburg Center, opposite Odd Fellows' hall, at northwest corner of road forks, in face of large boulder; aluminum tablet stamped "438".....	437. 797
North Fryeburg, in top face of door stone of Universalist Chapel; aluminum tablet stamped "388".....	388. 114
North Fryeburg, at northwest corner of Harry Hutchin's general store, on top of stone post; chisel mark "387".....	386. 00
Harbor, at Iron Bridge, in top face of stone of northwest abutment; aluminum tablet stamped "381".....	380. 870
Center Lovell, 300 feet south of schoolhouse, east of road, in top face of large boulder; aluminum tablet stamped "530".....	529. 644
Center Lovell, 4 miles north of, in front of Stephen Kimball's residence, west of road, in top face of boulder embedded in ground; aluminum tablet stamped "725".....	724. 478
East Stoneham, opposite to Knights of Pythias hall, in large boulder; aluminum tablet stamped "629".....	628. 553

From Harbor northwest along highway 2.8 miles. (Single-spur line.)

Harbor, 2.8 miles northwest of, west of road opposite O. P. Stevens's residence, in rock; aluminum tablet stamped "423".....	423. 187
--	----------

Belfast, Brooks, Burnham, Castine, Liberty, Rockland, and Waldoboro quadrangles.

KENNEBEC, KNOX, LINCOLN, AND WALDO COUNTIES.

The leveling was done in Belfast quadrangle in 1904 by F. J. McMaugh, in 1913 by J. M. Perkins, in 1914 by K. E. Schlachter, in Brooks and Burnham quadrangles in 1914 by Schlachter, in Castine quadrangle in 1904 by McMaugh, in Liberty quadrangle in 1913 by Perkins, in 1914 by Schlachter, in Rockland quadrangle in 1904 by McMaugh, and in Waldoboro quadrangle in 1913 by Perkins.

BELFAST QUADRANGLE.

[Latitude 44° 15'-44° 30'; longitude 69°-69° 15'.]

From point 2 miles south of Appleton north along highway to point 1 mile southeast of South Montville.

	Feet.
Appleton, 0.5 mile east of, at four roads, on granite boulder 10 feet north of road and 30 feet west of cooper shop; on rock; square cut.....	265.40
Appleton, opposite post office, in yard of Vina Gushee, on top of stone bound, at road corner; square cut.....	152.14
Appleton, 0.5 mile north of, at road leading to Belfast, on top of rock; painted square.....	247.51
Appleton, 1.6 miles north of, at four roads, in front of J. P. Moody's house, on stone in culvert; bronze tablet stamped "455".....	455.149
Appleton, 2 miles north of, on West Appleton road, at four corners, on stone 20 feet north of mail boxes; square cut.....	427.35
West Appleton, 1.3 miles south of, at southeast corner of four corners, in small boulder; square.....	371.72
West Appleton, at four roads, on outcrop of ledge southwest of road and 50 feet from road intersection; bronze tablet stamped "315".....	314.465
South Montville, 1 mile southeast of, at road corner, on stone by north bank of Georges River, 35 feet north of bridge and west side of road, on stone; square cut.....	268.36

From Swanville south along highway to Belfast.

Swanville, 3 miles south of, in granite ledge at left of road; aluminum tablet stamped "216".....	215.852
Belfast, on Church Street front of court-house, in water table; aluminum tablet stamped "102".....	102.368

From Ducktrap River southwest along highway via Lincoln to Camden.

Northport, 4.1 miles south of, 100 feet south of L. D. Ames's house, 65 feet west of road; aluminum tablet stamped "34".....	34.059
Lincolnton Beach, north end of bridge over inlet; mark on stone coping.....	8.68
Lincolnton, 2.4 miles south of, in ledge at top of hill, 25 feet south of wood road west, 600 feet south of house; aluminum tablet stamped "194"....	194.012

From point 0.5 mile north of Appleton east along highway to Ducktrap.

Appleton, 0.5 mile north of, at road to Belfast, on top of rock; painted square.....	247.51
North Appleton, 0.5 mile northwest of, at crossroad, in boulder, in northeast corner; chiseled square painted "199.6".....	199.56
North Appleton, 0.4 mile southeast of, at Thompson's corner, northeast corner of crossroads, in culvert; bronze tablet stamped "Maine 188"....	187.657
North Appleton, 1.7 miles southeast of, in northwest corner of T road, in boulder; chiseled square, painted "535.4".....	535.40

North Appleton, 2.5 miles east of, northwest corner of T road, in ledge; chiseled square painted "583.2".....	Feet. 583. 18
Hope, 0.7 mile northwest of, in southwest corner of crossroads, on limestone slab; chiseled square painted "460.9".....	460. 89
Hope, in corner diagonally opposite post office at crossroads, in rock; bronze tablet stamped "Maine 349".....	349. 340
Hope, 1.2 miles northeast of, at T road, in boulder in southeast corner, near stone wall; chiseled square painted "234.1".....	234. 06
Lincolnville Center, 1.3 miles south of, 800 feet south of T road, in ledge on west margin of highway; chiseled square, painted "194.2".....	194. 18
Lincolnville Center, 0.2 mile southwest of post office, 100 feet south of Methodist Church, in ledge west margin of road; bronze tablet, stamped "Maine 213 (?)".	201. 401
Lincolnville Center, at corner, in platform of pump; copper nail with painted circle.....	179. 15
Lincolnville Center, 0.7 mile east of, on boulder near stone wall in northwest corner of crossroads; chiseled square, painted "177.5".....	177. 41
Lincolnville Beach, 2 miles southwest of, 60 feet north of Stevens's corner, on boulder on east margin of road; bronze tablet stamped "Maine 261".....	261. 174
Lincolnville Beach, 1 mile west of, at crossroads, (Carver corner), in ledge 300 feet south of corner, in east margin of road; chiseled square, painted "188.1".....	188. 05
Ducktrap, (4.1 miles south of Northport), in ledge 65 feet west of highway, 150 feet south of L. D. Ames's residence; aluminum tablet stamped "34".	34. 059

From Belfast southwest along highway to South Montville.

Belfast, on Church Street front of courthouse, in water table; aluminum tablet stamped "102".....	102. 368
Belfast, 1.3 miles southwest of, along Lincolnville road, 150 feet north of A. H. Young's house, on boulder in east margin of road; chiseled square..	176. 60
Belfast, 2.3 miles southwest of (Pitcher's corner), 600 feet west of fork of road, in ledge on south margin of road; chiseled square, painted "161.6".....	161. 64
Pitcher School, 100 feet east of crossroads, in boulder, in north margin of road; bronze tablet, stamped "Maine 295".....	294. 856
Pitcher School, 1 mile west of, at crossroads, on stone culvert in southwest corner; chiseled square, painted "366.9".....	366. 95
Center Belmont School, 1.3 miles east of, at T road, on culvert in northwest corner; chiseled square, painted "301.5".....	301. 59
Center Belmont School, at crossroads, in ledge at northwest corner of schoolhouse; bronze tablet, stamped "Maine 285".....	285. 138
Wilkins's Corner, 20 feet south of road forks, on boulder in east margin of road; chiseled square, painted "313.8".....	313. 92
Searsmont, 2.3 miles east of, 175 feet west of bridge, in ledge on south margin of road; chiseled square, painted "222.3".....	222. 38
Searsmont, 0.6 mile east of, in southeast corner at road fork, on boulder; chiseled square, painted "276.9".....	277. 00
Searsmont, 0.3 mile east of, 100 feet north of road fork, on boulder in west margin of road; chiseled square.....	253. 43
Searsmont, in northeast corner of stone step of Methodist Church; bronze tablet stamped "Maine 227".....	226. 992
Searsmont, 2 miles west of, at T road, on boulder in southwest corner; chiseled square, painted "286.6".....	286. 70
South Montville, 1 mile southeast of, at road corner (Woodman's mills) on stone near north bank of Georges River, 35 feet north of bridge, west of road; square cut.....	268. 360

Near Knox Center. (Part of line leveled twice from Polands Corner to Belfast.)	
Knox Center, 1.8 miles south of, at crossroads, on boulder in southwest corner; chiseled square, painted "510.8".....	Feet. 510.53
Knox Center, 0.8 mile south of, at crossroads, on boulder in wall, 50 feet west of bridge, on south side of road; chiseled square, painted "356.0" ..	355.67
From Waldo station southeast along Maine Central R. R. to Belfast. (Leveled twice.)	
Waldo, at station; top of rail.....	261.1
Waldo, 1.3 miles south of, at "Fowlerhill" road crossing, 20 feet north of track and 20 feet east of road, in boulder; bronze tablet.....	229.443
Waldo, 2.1 miles south of, at Wall's crossing, north of highway, east of track, on boulder; chiseled square.....	191.87
City Point, 0.7 mile north of, 0.2 mile north of road crossing, east margin of track, in boulder; bronze tablet.....	73.640
City Point station, $\frac{1}{4}$ mile south of, at road crossing, west margin of road, west of track, on boulder; chiseled square.....	36.74
Belfast, 1 mile north of, 10 feet south of crossing, on east side of railroad culvert; top of painted bolt.....	28.97

BROOKS QUADRANGLE.

[Latitude 44° 30'-44° 45'; longitude 69°-69° 15'.]

From Knox Center northeast along highway to point near Brooks, thence southeast along Maine Central R. R. to Waldo. (Leveled twice.)	
Knox Center (H. W. Boulter's store), 140 feet west of bridge, in boulder on south margin of road; bronze tablet stamped "Maine 334".....	333.248
Knox station, 1 mile south of, at crossroads, on rock in northwest corner; chiseled square, painted "443.6".....	443.29
Knox station, $1\frac{1}{2}$ miles southeast of, at Bailey's crossing, 60 feet east of, on rock in south edge of right of way; chiseled square, painted "489.2" ..	488.79
Knox station, 2.1 miles southeast of, 750 feet east of milepost 16 from Belfast, on boulder in north margin of track; chiseled square, painted "521.7".....	521.24
Knox station, 2.4 miles southeast of, at road crossing, 50 feet north of railroad, 20 feet east of highway, in ledge; bronze tablet, stamped "Maine 498".....	498.052
Brooks, 3 miles west of, 120 feet west of milepost 15, on rock in north margin of road, near crossing; chiseled square, painted "480.6".....	480.19
Brooks, 2 miles west of, at grade crossing at Hoop-pole landing, in northwest bridge seat; chiseled square.....	411.28
Brooks, 1.1 miles west of, 550 feet east of crossing; top of rail.....	395.24
Brooks, 1 mile west of, 40 feet east of milepost 13, in south margin of track, in boulder; chiseled square.....	400.04
Brooks, northeast corner of A. E. Chase Co.'s store, in concrete step opposite; bronze tablet.....	386.55
Brooks, 1.2 miles east of, at road crossing, east of highway, south edge of railroad track, in boulder; chiseled square.....	361.69
Brooks, 2.2 miles east of, 550 feet east of milepost 101, south margin of road, in ledge; chiseled square.....	346.11
Brooks station, 3 miles east of, in southeast bridge seat, 300 feet north of milepost 9; bronze tablet.....	315.684
Waldo, 2 miles north of, near water tank, on northwest bridge seat; chiseled square.....	290.49
South Brooks crossing; top of rail.....	278.6

BURNHAM QUADRANGLE.

[Latitude 44° 30'–44° 45'; longitude 69° 15'–69° 30'.]

Near south border of quadrangle.

Sibley Corner, 1 mile east of, in rock southwest corner of crossroads; chiseled square painted "815.0".....	Feet. 814.82
Sibley Corner, 75 feet north of crossroads, in ledge northwest corner; chiseled square painted "555.4".....	555.15
South Albion, 0.7 mile southeast of, in boulder in southwest corner of T road; chiseled square painted "415.2".....	415.00
South Albion (Puddleduck), in coping southwest corner of bridge over 15-mile stream; bronze tablet stamped "Maine 243".....	242.95

LIBERTY QUADRANGLE.

[Latitude 44° 15'–44° 30'; longitude 69° 15'–69° 30'.]

At point 2 miles south of Appleton.

Appleton, 2 miles south of, at road corner east of Sennebec Lake and on road to Union, on boulder 25 feet west of large elm tree; bronze tablet stamped "131".....	130.374
--	---------

From South Somerville east along highway to Cunninghams Corner.

South Somerville, at four corners near T. P. Jones's store, 10 feet north of road and 50 feet east of corner, in granite boulder; bronze tablet stamped "274." (This bench mark may soon be removed on account of State highway work).....	273.219
West Washington, at four roads, northwest corner of road intersection, in boulder; square cut.....	300.85
Stickney Corner, 2.2 miles west of, at road corner, in stone supporting sign boards; square cut.....	232.78
Cunningham's Corner (1.4 miles west of Stickney Corner), 75 feet north of, on boulder 10 feet west of highway; bronze tablet stamped "288".....	288.271

From point 2 miles east of Stickney Corner east along highway 1.2 miles.

Stickney Corner, 2 miles east of, at road corner, in stone supporting guide boards; square cut.....	155.700
Stickney Corner, 2.3 miles east of, on boulder by south side of road, 40 feet west of iron bridge over Modomac River; bronze tablet stamped "146".....	145.465
Stickney Corner, 2.4 miles east of, at road corner 2 miles south of North Union, on flat stone in grass triangle; square cut.....	375.87

From South Montville along highway north to Liberty, thence west to Palermo Center, thence south to West Washington.

South Montville, 0.5 mile north of, at four roads, 5 feet from guide board post, in top of stone; square cut.....	407.58
Liberty, 1.3 miles east of, at four roads, in root of mountain oak tree 4 inches in diameter, in yard of Frank Cunningham; copper nail.....	314.95
Liberty, 1 mile east of, by bridge over Trues Pond, on stone in bridge abutment, north side of road and east of bridge; bronze tablet stamped "297".	297.402
Liberty, at four roads near Skidmore's store, under elm tree, 25 feet in rear of Hunt & Walker Co.'s office, on top of rock; chiseled square.....	376.61
Liberty, 1.5 miles northwest of, at road corner, west of road and 80 feet south of corner, on top of boulder; square cut.....	563.44

	Feet.
Liberty, 1.7 miles northwest of, 0.2 mile west of road corner, on land of Mr. Dymol, on boulder 15 feet north of road; bronze tablet stamped "512" ..	511. 905
St. George Lake; water surface Sept. 26, 1913.....	505. 1
Liberty, 2.3 miles west of, on road to East Palermo, in front of house of C. R. Nelson, in top of concrete culvert; square cut.....	514. 70
East Palermo, 2.2 miles east of, at Sherman's corner, on stone in top of culvert opposite store; square cut.....	551. 35
East Palermo, 0.9 mile east of, at road corner, 20 feet south of road, in pasture, on top of boulder, square cut.....	478. 11
East Palermo, at road corner, on southeast corner stone of cemetery fence, 15 feet from road and 30 feet from Day's store, in top of stone; square cut.....	506. 75
East Palermo, 0.5 mile north of, at road corner, on large flat rock, north of triangle between roads; bronze tablet stamped "368".....	368. 576
East Palermo, 1.5 miles northwest of, at road corner, on large granite boulder north of road leading to Freedom; square cut.....	301. 45
Palermo, at Greeley's corner, 150 feet east of road corner, in orchard of S. B. Jones, on boulder 10 feet from stone wall; bronze tablet stamped "498" ..	498. 304
Palermo, at road corner 1.2 miles south of Greeley's corner, on stone in yard of Handy & Howard, 10 feet south of locust tree; square cut.....	450. 16
Palermo, 2.3 miles south of Greeley's corner, at four roads, on ledge 10 feet in front of old schoolhouse; square cut.....	316. 31
Somerville, 1.5 miles north of Sand Hill corner, at a road corner, on large granite boulder east of road intersection; bronze tablet stamped "332" ..	332. 009
Somerville, at Sand Hill schoolhouse, on south stone of south door steps; square cut.....	300. 42
Sand Hill corner, 20 feet southeast of guide post, on rock; painted square..	288. 28
Washington, 3 miles north of West Washington, at road corner, 40 feet south of guide boards, on top of granite boulder; square cut.....	298. 20
West Washington, 2 miles north of, at road corner, 2 miles west of Razorville, on stone supporting guide boards; bronze tablet stamped "466" ..	465. 965
West Washington, 0.5 mile north of, at road corner, on stone supporting guide boards; square cut.....	344. 28
West Washington, at four roads, northwest corner of road intersection, on boulder; square cut.....	300. 85
From point 1 mile east of Liberty along highway north to Poland's corner, thence northwest and west to point near China, thence south along Wiscassett, Waterville & Farmington R. R. and highway to Palermo.	
Liberty, 1 mile east of, at bridge over Trues Pond, on stone in abutment, north side of road, east of bridge; bronze tablet stamped "297".....	297. 402
Kingdon, in rock in southeast corner of crossroad; chiseled square, painted "307.6".....	307. 65
Kingdon, 1.5 miles north of, along Freedom road, 0.2 mile south of T road west, in ledge east margin of road; bronze tablet stamped "Maine 413" ..	413. 174
Bean's corner, 1 mile south of, at northeast road corner; in rock, chiseled square painted "515. 8".....	515. 65
Bean's corner, in boulder in northeast corner of crossroads; chiseled square painted "639.3".....	639. 16
Poland's corner, 300 feet south of, in boulder east margin of road; bronze tablet stamped "Maine 559".....	558. 646
Poland's corner, $\frac{1}{2}$ mile north of, in boulder west margin of road, at road fork; chiseled square painted "547.9".....	547. 70
West Montville, 1.5 miles east of, in ledge in southeast corner of crossroad; chiseled square painted "612.0".....	611. 76

	Feet.
West Montville, at road forks, in rock north side of culvert; chiseled square painted "540.3"	540.06
Gregory's corner, in boulder, in southwest corner at road fork; chiseled square painted "714.5"	714.33
Freedom, 2 miles south of, 0.37 mile west of Gregory's corner, 375 feet west of road corner, in boulder north margin of road; bronze tablet stamped "Maine 702"	701.412
Hutchin's corner, in boulder, 100 feet east of crossroads, on north margin of road; bronze tablet stamped "Maine 538"	538.162
Hutchin's corner, 1 mile west of, at road fork north, in ledge north margin of road; chiseled square painted "538.7"	538.52
South Albion, 2.1 miles southwest of, 30 feet east of highway bridge near crossroad, at south margin of road, on rock; chiseled square painted "307.9"	307.72
Sennett's corner (W. F. Sennett), in boulder in northwest corner of T road; chiseled square, painted "497.8"	497.63
China, 1.5 miles northeast of, 160 feet south of road corner, in boulder west margin of road; bronze tablet stamped "Maine 275"	274.715
China station, 10 feet north of; top of west rail, painted "213.6"	213.45
China, 3 miles south of (Cole station), southwest corner, at road corner, 350 feet west of railroad, in boulder; bronze tablet stamped "Maine 339"	339.000
Palmero station, 1.4 miles north of, 15 feet north of highway bridge over railroad, on boulder east margin of track; chiseled square, painted "335.2"	335.06
Palmero station, in telephone pole in northwest corner of intersection of highway and railway; top of railroad spike, painted "352.2"	352.05
Palermo (Branch Mills), in northwest abutment of highway bridge over West Branch of Sheepscot Stream; bronze tablet stamped "Maine 346"	345.487
Palermo, 1.2 miles southeast of, 250 feet south of road fork, in boulder, west margin of western highway; chiseled square painted "425.5"	425.39
Palermo, 2.1 miles southeast of, in ledge in northwest corner of crossroads; chiseled square painted "448.1"	448.02
Palermo Center, 150 feet east of Greeley's corner, in orchard of S. B. Jones, on boulder 10 feet north of stone wall; bronze tablet stamped "498"	498.304

WALDOBORO QUADRANGLE.

[Latitude 44°-44° 15'; longitude 69° 15'-69° 30'.]

From Warren west along Maine Central R. R. to Glendon station, thence along highways north to West Washington, east to Union, and south to Warren station.

Warren, road corner at Monument Square, in ledge, south point of triangular park; drill hole	151.82
Warren, 0.7 mile southwest of, opposite H. L. Russell's store at road corners; elevation on top of iron gate box cover near signboard	158.39
Warren station, 50 feet east of, at crossing; top of north rail	53.2
South Pond; surface of water June 25, 1913	34.7
Warren station, 0.6 mile west of, at crossing; top of rail	67.6
Warren station, 2 miles west of, at road crossing, granite stone 20 feet north of railroad and 20 feet east of highway; bronze tablet stamped "147"	147.411
Warren station, 2.7 miles west of, at Goshen Crossing (East Waldoboro station), in top of boulder west of crossing and 15 feet north of railroad; drill hole	167.21
Warren station, 4 miles west of, in stone in southwest abutment of railroad culvert; drill hole	162.60
Waldoboro station, 1.2 miles east of, at highway crossing; top of south rail ..	170.2

Waldoboro station, 0.7 mile east of, at road crossing, in ledge southeast of crossing, ten feet from road and 20 feet from railroad; drill hole.....	Feet. 157. 48
Waldoboro, 110 feet north of highway crossing by station, in ledge in yard of M. R. Achorn, and 10 feet from highway; bronze tablet stamped "108".	108. 197
Winslows Mills, top of north rail, main track opposite station; painted rail..	75. 6
Winslows Mills, 0.6 mile west of, at road crossing, on boulder 2 feet in diameter, 35 feet north of track and 40 feet east of highway; bronze tablet stamped "99".....	99. 249
Glendon station, top of south rail opposite depot; painted rail.....	118. 7
Glendon station, 0.5 mile west of, at road crossing, in ledge 10 feet south of track and 20 feet east of highway; bronze tablet stamped "120".....	119. 689
Benner's corner, at junction of Pond road, and stage road from Waldoboro to Jefferson, in lower stone of gateway in stone wall, 30 feet from angle in wall; hollow square cut.....	218. 37
Jefferson, 3.8 miles south of, on Pond road leading to Waldoboro, in boulder, east side of road, and 150 feet south of A. W. Flagg's house; bronze tablet stamped "158".....	158. 098
Jefferson, 0.8 mile southeast of, at road corner on Pond road, on top of boulder, north of grass triangle and 6 feet from road; square cut.....	171. 11
Jefferson, at east end of village, at intersection of Pond road with road leading to North Waldoboro, in flat stone in culvert 600 feet east of Sylvester's store; bronze tablet stamped "63".....	62. 688
Damariscotta Lake; surface of water July 18, 1913.....	51. 6
Jefferson, west end of village at road corner by Week's store, in top of rock west of grass triangle; square cut.....	102. 24
West Jefferson, 100 feet east of road four corners, in front of Shepherd Cemetery, in hitching stone; top of ring bolt.....	297. 00
West Jefferson, $\frac{1}{3}$ mile north of, by side of road, 200 feet north of house of W. B. Tibbetts, in granite boulder 20 feet west of road; bronze tablet stamped "297".....	296. 393
West Jefferson, 2.2 miles north of, on road to South Somerville, at road corner, in small rock in center of grass triangle; square cut.....	291. 80
South Somerville, 0.7 mile south of, 100 feet south of house of Orin Bowman, in ledge 8 feet west of road; square cut.....	257. 60
Stickney corner, 0.3 mile west of, at road corner, in stone supporting guideboards; square cut.....	396. 73
Stickney corner, at intersection of roads, on stone 6 feet from road, on banking in front of residence of William Racklief; square cut on stone.....	341. 48
Stickney corner, 0.9 mile east of, at road corner, in top of stone near gateway in stone wall; square cut.....	250. 01
Union, 3.7 miles north of, at road corner on North Union road, in boulder, west side of road at fork; square cut.....	404. 34
Union, 2.6 miles north of, on North Union road, in yard of Gleason school, in flat stone near road; square cut.....	436. 04
Union, 1 mile west of, at four roads, opposite residence of F. S. Burgess, in ledge, 8 feet from signboards; temporary bench mark.....	107. 64
Union, 0.6 mile north of, at road corner, south end of grass triangle; in small boulder; square cut.....	85. 51
Union Common, opposite Burton House, in ledge 10 feet from road and 20 feet from guideboards; bronze tablet stamped "97".....	96. 835
South Union, 0.3 mile south of, at Philbrook's crossing, in small boulder, east side of road and 35 feet north of Georges Valley R. R.; square cut...	56. 23
White's Crossing; top of rail.....	41. 1

Warren station, 3.5 miles north of, at road crossing, Tutton's crossing, and at road corner, on small bowlder 100 feet east of railroad and on south side of highway near spring; bronze tablet stamped "45".....	Feet. 44. 646
---	------------------

CASTINE QUADRANGLE.

[Latitude 44° 15'-44° 30'; longitude 68° 45'-69°.]

From Belfast south along highway to Ducktrap River.

Belfast, 2.5 miles south of courthouse, coping top of dam at Little River pumping station.....	22. 7
East Northport, 250 feet southeast of junction of roads at Browns Corners, at left of road, on ledge; aluminum tablet stamped "50".....	50. 065
Northport, Saturday Cove, at junction of roads, 15.5 feet southwest of pump, 35 feet northeast of northeast corner of drab-colored building, in ledge; aluminum tablet stamped "120".....	119. 789

ROCKLAND QUADRANGLE.

[Latitude 44°-44° 15'; longitude 69°-69° 15'.]

From Camden southwest to West Rockport.

Camden, Camden National Bank, in granite pier, Elm street front; aluminum tablet stamped "36".....	36. 044
West Rockport, 2 feet west of signboard; mark on stone monument.....	220. 28
West Rockport, in large bowlder southeast side of road to Warren, 500 feet southwest of signboard, 100 feet southwest of house, 25 feet east of center of road; aluminum tablet stamped "228".....	227. 980

From West Rockport south along highway to Rockland, thence southwest to Thomaston, thence northwest to Warren, thence northeast to West Rockport.

Rockland, 3.8 miles north of, in ledge west of road along west shore of Chickawaukie Pond, 80 feet south of telephone pole marked "U. S." with arrow pointing toward tablet; aluminum tablet stamped "142".....	142. 029
Rockland, in water table at south side of post office building near southwest corner; aluminum tablet stamped "35".....	34. 978
Thomaston, 110 feet south of Main Street and 45 feet south of end of iron fence on west side of warden's yard at state prison; mark on top of granite monument.....	137. 83
Thomaston, in first course of west pier of old gateway dated "1824" in wall of state prison grounds, opposite fire station house; aluminum tablet stamped "142".....	142. 293
Warren, 0.2 mile south of road forks near, in ledge at left of road; aluminum tablet stamped "131".....	130. 925
Warren, 3.9 miles northeast of, in ledge at junction of roads 50 feet south of main road; aluminum tablet stamped "219".....	218. 887

Bangor, Bluehill, Bucksport, Ellsworth, Mount Desert, Orland, and Orono quadrangles.**HANCOCK, PENOBSCOT, AND WALDO COUNTIES.**

The elevations in the following list are based on an aluminum tablet in the post-office and customhouse building at Bangor, stamped "23 Bangor 1899," the elevation of which is accepted as 23.725 feet above mean sea level, as determined by an adjusted circuit from Bucksport, where tidal observations on the Penobscot River were taken during two lunar months in August and September, 1899. The standard

bench marks in this area, which were published in Bulletin No. 185, are included in this list.

The leveling was done as follows: In Bucksport quadrangle by Robert Coe and J. W. Edgerly in 1899, and by F. J. McMaugh in 1904; in Bangor quadrangle by J. W. Edgerly in 1900; in Orono quadrangle by J. W. Edgerly in 1900, and by F. J. McMaugh in 1904; in Orland quadrangle by Robert Coe in 1899, and by A. S. Havens in 1901; in Bluehill and Mount Desert quadrangles by A. S. Havens in 1901; and in Ellsworth quadrangle by C. K. Alexander in 1908.

BUCKSPORT QUADRANGLE.

[Latitude 44° 30'-44° 45'; longitude 68° 45'-69°.]

From Bangor south along Bucksport branch Maine Central R. R. to Bucksport.

	Feet.
South Orrington, in foundation of Methodist Church, in middle of south face of third stone from southwest corner; aluminum tablet stamped "61 Bangor 1899"	61. 440
North Bucksport, 0.7 mile south of, 8 feet southwest of milepost "Bucksport 6 miles, Portland 150 miles," point of gray boulder; chisel mark. . .	103. 38
Bucksport Center, 0.9 mile south of, 10 feet south of milepost "Bucksport 4 miles, Portland 152 miles," point of blue boulder; chisel mark.	115. 15
Bucksport, on lowest step of side wall on left side of stone steps to Buck Memorial Library, in front face of coping; aluminum tablet stamped "43 Bangor 1899"	43. 148

From Bucksport west along highway via Prospect to North Searsport.

Prospect, 0.25 mile south of, residence of J. R. Killman, in south face of brick, second above foundation and third from southwest corner; aluminum tablet stamped "77 Bangor 1899"	76. 710
Prospect, 3 miles west of, 80 feet east of four corners crossroads on Browns Hill, north of road, on large gray boulder; chisel mark.	318. 68
North Searsport, near road forks, 20 feet southwest of signboards "Frankfort 7 miles, Belfast 10 miles, Swanville 3 miles," "Searsport 7 miles, Monroe 5 miles," in small gray boulder; aluminum tablet stamped "393 Bangor 1899"	392. 663

From North Searsport north along highway via West Winterport to North Newburg.

West Winterport, residence of J. W. Hobbs, in front face of top front door-step; aluminum tablet stamped "162 Bangor 1899"	161. 650
Ellingwoods corner, 0.25 mile north of, brick residence of Stephen L. Perkins, center of capstone of cellar window at south end; aluminum tablet stamped "387 Bangor 1899"	386. 814

From North Searsport southwest along highway to Swanville.

Swanville, 150 feet south of Nickerson & Quinn's store, west of road, in boulder; aluminum tablet stamped "209"	209. 410
---	----------

BANGOR QUADRANGLE.

[Latitude 44° 45'-45°; longitude 68° 45'-69°.]

From North Newburg northeast to Hermon Center, thence east along highway to Bangor.

North Newburg, at crossroads, 90 feet west of signboards "Winterport 11 miles, Carmel 4 miles, Bangor 11 miles, North Dixmont 9 miles," in ledge; aluminum tablet stamped "180 Bangor 1899"	180. 389
Bangor, at southwest corner of courthouse; aluminum tablet.	61. 159

From Hermon Center northwest along highway via Levant to South Corinth, thence east to Oldtown.

Snow Corner, 100 feet northeast of crossroads, south of highway, at rear of post office, in root of fir tree; nail.....	Feet. 168. 90
Levant, west face of southeast corner stone of underpinning of post office; aluminum tablet stamped "143 Bangor".....	142. 988
Kenduskeag, in front of residence of Dr. J. B. Benjamine, east of road, in root of 3-foot elm tree; nail.....	137. 05
South Corinth, west of road, about 1,600 feet north of crossroads, in ledge on Cushman Hill; bronze tablet stamped "296 Bangor".....	295. 935
Hudson, in east face of underpinning on east side of Baptist Church; aluminum tablet stamped "151 Bangor".....	151. 363
West Oldtown, 300 feet west of corner, 36 feet north of road, southeast face of large boulder; bronze tablet stamped "126 Bangor".....	125. 678

ELLSWORTH QUADRANGLE.

[Latitude 44° 30'-44° 45'; longitude 68° 15'-68° 30'.]

From Ellsworth north along Maine Central R. R. and highway to Tilden, thence east to Waltham.

Ellsworth, in foundation of Ellsworth Trust Co.'s bank building; aluminum tablet stamped "24".....	23. 993
Ellsworth Falls, 2.6 miles northwest of, on Mariaville road, 150 feet east of road in field, in top face of large boulder; aluminum tablet stamped "145".....	145. 005
Lakewood, 0.1 mile south of road corner, 30 feet west of road, in rock ledge; aluminum tablet stamped "181".....	181. 012
Lakewood, 3.1 miles north of, at forks of old and new roads, east of road, 100 feet south of corner, in top face of large boulder; aluminum tablet stamped "204".....	203. 891
Tilden, at southeast corner of road forks, in top face of large boulder; aluminum tablet stamped "231".....	230. 938
Waltham, 1 mile north of post office, 0.1 mile west of crossroads, north of road, in top face of large boulder; aluminum tablet stamped "414".....	414. 243
Waltham, at summit of hill, 250 feet north of graveyard, opposite schoolhouse, on north side of old cellar, in top face of buried rock; aluminum tablet stamped "480" (triangulation station).....	480. 285

From Ellsworth east along Maine Central R. R. to Franklin, thence north and west to Waltham.

Washington Junction, 0.25 mile east of station, on south side of Washington County Ry., in top face of large boulder; aluminum tablet stamped "172".....	172. 354
Washington Junction, 5 miles east of, at stream crossing known as "Stone Horse," south of railroad track in east end of abutment of railroad bridge; aluminum tablet stamped "121".....	121. 547
Franklin, 1 mile west of, 250 feet north of railroad crossing, west of road, in top face of large boulder; aluminum tablet stamped "88".....	88. 473
Eastbrook Corners, 3 miles south of, near crossing of outlet of Georges pond, private road running west, west of road just south of road forks, in top face of large boulder; aluminum tablet stamped "168".....	168. 063
Eastbrook Corners, at southwest side of, in top face of large boulder; aluminum tablet stamped "169".....	169. 180

From Waltham southwest to point 2 miles north of Ellsworth Falls.

	Feet.
Waltham, 1 mile south of post office, 0.05 mile north of road forks, east of road, in top face of large boulder; aluminum tablet stamped "176" . . .	176. 007
Waltham, 4 miles south of, near small summit (lower elevations toward south), in top face of large boulder west of road; aluminum tablet stamped "168"	167. 787
Ellsworth Falls, 4.5 miles north of, on rock lying west of road; chisel mark "107"	106. 41
Ellsworth Falls, 3.5 miles north of, at southwest corner of No. 8 plantation, 0.5 mile south of schoolhouse, east of road, in top face of large boulder; aluminum tablet stamped "125"	124. 555

ORONO QUADRANGLE.

[Latitude 44° 45'-45"; longitude 68° 30'-68° 45'.]

From Milford northeast along highway 7 miles. Spur line.

Milford, 7 miles northeast of, near highway bridge over Birch Stream on Milford-Greenfield road, 80 feet south of center of and 28 feet east of center of traveled highway, in ledge; bronze tablet stamped "130 Bangor" . . .	130. 586
--	----------

From Oldtown southwest along highway and Maine Central R. R. to Veazie.

Oldtown, St. James Episcopal Church, corner Maine and Middle streets, east end of north face; aluminum tablet stamped "108 Bangor"	108. 106
Orono, University of Maine, in west face of coping stone of Wingate hall; aluminum tablet stamped "115 Bangor"	115. 529

From Veazie southeast along highway to East Eddington.

East Eddington, Universalist Church, in northwest corner stone; bronze tablet stamped "193 Bangor"	193. 426
--	----------

From East Eddington to Clifton. Single-spur line.

Clifton, 9 feet east of southeast corner of Free Baptist Church, in ledge; $\frac{3}{4}$ -inch iron bolt	285. 338
--	----------

From East Eddington south to East Holden, thence west along Maine Central R. R. to Bangor.

Harts Corners, in east face of underpinning of Holden townhouse, 11 feet south of entrance; aluminum tablet stamped "296 Bangor"	298. 210
--	----------

From Oldtown north along Maine Central R. R. to Costigan.

Milford, in front of station; top of rail	129. 2
Oldtown, 3.1 miles north of, east side of track, in ledge; aluminum tablet stamped "133 Bangor"	132. 562

ORLAND QUADRANGLE.

[Latitude 44° 30'-44° 45'; longitude 68° 30'-68° 45'.]

From Bucksport via Orland, East Orland, and West Ellsworth to Ellsworth.

East Orland, 960 feet east of bridge at road forks, 70 feet to left of road, on side of boulder; aluminum tablet stamped "168 B 1899"	168. 059
West Ellsworth, 1,150 feet west of road forks, 40 feet to left of road, boulder in field; aluminum tablet stamped "275 Bangor 1899"	275. 497

From Ellsworth northwest over wagon road to East Holden.

	Feet.
Nicolin, 50 feet to left of Ellsworth-Bangor road and 10 feet to right of road from Nicolin railroad station to Branch Pond, on gray rock; aluminum tablet stamped "446 Bangor".....	446. 475
Dedham, 1.5 miles south of Lake House railroad station, in west side of big bowlder; aluminum tablet ¹ stamped "287 Bangor".....	286. 545

From Orland north to point near East Bucksport. Single-spur line.

East Bucksport, 3 miles south of, northeast corner stone of East Bucksport Church; aluminum tablet stamped "186 Bangor".....	186. 119
--	----------

BLUEHILL QUADRANGLE.

[Latitude 44° 15'-44° 30'; longitude 68° 30'-68° 45'.]

From East Orland southeast along highway to Bluehill, thence northeast to Surry.

North Bluehill, 660 feet west of crossroads, 30 feet north of road running west, in bowlder; bronze tablet stamped "337 Bangor 1901".....	336. 809
Bluehill, 125 feet east of northwest-southeast road, 75 feet south of public wharf, in face of rock ledge; bronze tablet stamped "15 Bangor 1901"....	14. 981
Surry, 1.25 miles south of, 15 feet west of road, opposite house on right, about 250 feet south of road to left, in bowlder; chisel mark "D".....	174. 19

MOUNT DESERT QUADRANGLE.

[Latitude 44° 15'-44° 30'; longitude 68° 15'-68° 30'.]

From Surry northeast to Ellsworth.

Surry, 0.5 mile east of, 800 feet east of Surry townhall, 15 feet to right of road, in rock ledge; bronze tablet stamped "88 Bangor 1901".....	88. 874
--	---------

Mattawamkeag, Millinocket, Passadumkeag, Seboeis, and Winn quadrangles.

PENOBSCOT COUNTY.

The elevations along Penobscot River in the following list are based on an aluminum tablet in the post-office and customhouse building at Bangor, stamped "23 Bangor 1899." The elevation of this bench mark is accepted as 23.725 feet above mean sea level. A double-rodged line was run, beginning at a bench mark at Oldtown, reported in another list (p. 38). From Millinocket water and spirit levels were extended by the Great Northern Paper Co., and the water-resources branch of the United States Geological Survey at Moosehead, where a junction was made with the Kennebec levels. The extended elevations were found to be in such close agreement with the Kennebec levels, as corrected in 1906 to reliable mean sea-level datum at Portland, that no adjustment has been made in determining the elevations of this list.

The leveling was done in 1904 by F. J. McMaugh.

¹ An adjustment of nearly 2 feet is made in line between here and East Holden.

PASSADUMKEAG QUADRANGLE.

[Latitude 45°-45° 15'; longitude 68° 30'-68° 45'.]

From Costigan north along Maine Central R. R. to Enfield.

	Feet.
Costigan, 215 feet north of station, railroad bridge, east end of south abutment; aluminum tablet stamped "115".....	114. 979
Greenbush, 1.6 miles south of, in milestone marked "Vanceboro 93 miles, Portland 158 miles"; aluminum tablet stamped "122".....	121. 999
Greenbush station; top of west rail.....	133. 5
Greenbush, 1.4 miles north of, east side of track, in milestone marked "Vanceboro 90 miles, Portland 161 miles"; aluminum tablet stamped "145".....	144. 985
Olamon, in front of station; top of east rail.....	131. 3
Olamon, 0.7 mile north of, east side of track, in milestone marked "Vanceboro 87 miles, Portland 164 miles"; aluminum tablet stamped "144"....	143. 957
Passadumkeag, railroad bridge over Passadumkeag River, in bridge seat east end of south abutment; aluminum tablet.....	137. 571
Enfield, 1.9 miles south of, in milestone marked "Vanceboro 81 miles, Portland 170 miles;" aluminum tablet stamped "185".....	185. 039

SEBOEIS QUADRANGLE.

[Latitude 45° 15'-45° 30'; longitude 68° 30'-68° 45'.]

From Enfield northeast along Maine Central R. R. to Lincoln Center.

Enfield, in front of station; top of east rail.....	202. 9
Enfield, 1 mile north of, in milestone marked "Vanceboro 78 miles, Portland 173 miles;" aluminum tablet stamped "221".....	220. 984
South Lincoln, 1.1 miles southeast of, 4 miles north of Enfield, in milestone marked "Vanceboro 75 miles, Portland 176 miles;" aluminum tablet stamped "242".....	241. 989
South Lincoln, in front of station; top of rail.....	238. 5
South Lincoln, 1.9 miles northeast of, east side of track, in milestone marked "Vanceboro 72 miles, Portland 179 miles;" aluminum tablet stamped "241".....	240. 975
Lincoln, in front of station; top of west rail.....	216. 3
Lincoln, 0.7 mile north of, in milestone marked "Vanceboro 69 miles, Portland 182 miles;" aluminum tablet stamped "223".....	222. 970

WINN QUADRANGLE.

[Latitude 45° 15'-45° 30'; longitude 68° 15'-68° 30'.]

From Lincoln Center northeast along Maine Central R. R. to Mattawamkeag.

Lincoln Center, in front of station; top of east rail.....	179. 0
North Lincoln, in milestone marked "Vanceboro 66 miles, Portland 185 miles;" aluminum tablet stamped "225".....	224. 958
North Lincoln, in front of station; top of east rail.....	210. 2
North Lincoln, 3 miles northeast of, in milestone marked "Vanceboro 63 miles, Portland 188 miles;" aluminum tablet stamped "229".....	228. 977
Winn, 1.2 miles southwest of, in milestone marked "Vanceboro 60 miles, Portland 191 miles;" aluminum tablet stamped "199".....	199. 142
Winn, in front of station; top of east rail.....	212. 1

MATTAWAMKEAG QUADRANGLE.

[Latitude 45° 30'–45° 45'; longitude 68° 15'–68° 30'.]

From Mattawamkeag northwest along highway to Medway.

	Feet.
Mattawamkeag, in front of station; top of east rail.....	217. 8
Mattawamkeag, 0.2 mile north of, railroad bridge over Mattawamkeag River, east end of south abutment; aluminum tablet stamped "213".....	212. 692
Mattawamkeag, 3.1 miles northwest of, east side of road to Jordan's mill, 260 feet north of junction with main road to Medway, large boulder; aluminum tablet stamped "217".....	217. 013
Mattawamkeag, 6.64 miles northwest of, west of road in clearing, 120 feet northeast of small shack, 160 feet east of log cabin, large boulder; aluminum tablet stamped "320".....	320. 184
Medway, 2.36 miles southeast of, west of road, 250 feet northwest of Clarke Lakeman's house, in ledge; aluminum tablet stamped "256".....	256. 261

MILLINOCKET QUADRANGLE.

[Latitude 45° 30'–45° 45'; longitude 68° 30'–68° 45'.]

From Medway northwest along highway to Millinocket, thence northwest along Bangor & Aroostook R. R. to Twin Lakes.

Medway, 0.27 mile west of ferry, on land of A. T. Reed, 50 feet east of road and 120 feet west of his house, in ledge; aluminum tablet stamped "279".....	278. 911
Medway, 5.30 miles northwest of, 745 feet north of Charles T. Powell's house, 35 feet west of road, in boulder; aluminum tablet stamped "306".....	305. 598
Millinocket Congregational Church, southeast corner of granite underpinning of tower; aluminum tablet stamped "384".....	383. 992
Millinocket, in front of station; top of south rail.....	363. 3
Twin Lake dam, 4.87 miles southwest of Millinocket, top of north pier at 24-foot gate opening; aluminum tablet stamped "495".....	494. 562
Twin Lake dam, 1 mile east of Norcross, 80 feet south of dam, south of track, in large boulder; copper bolt.....	503. 43

Boyd Lake, Passadumkeag, and Suponic quadrangles.**PENOBSCOT COUNTY.**

The elevations in the following list were determined by primary leveling and accord with Bulletin 437.

The leveling was done in 1915 by C. S. Wells.

BOYD LAKE QUADRANGLE.

[Latitude 45°–45° 15'; longitude 68° 45'–69°.]

From point 4.1 miles west of Howland along highways southwest to La Grange, thence southeast to point 3 miles west of Argyle.

Howland, 4.1 miles west of, 20 feet south of road, in sandstone rock; chiseled square painted "365".....	365. 37
Howland, 5 miles west of, crossroads at sign post marked "Howland 6 miles, La Grange 5 miles; Maxfield 4 miles," in rock at base of sign post; chiseled square painted "440".....	440. 57
La Grange, 5 miles northeast of, on La Grange and Maxfield road, concrete culvert over Hoyts Brook, in center of east concrete rail; bronze tablet stamped "435".....	435. 258
La Grange, 4 miles northeast of, 10 feet west of road, 100 feet northeast of blacksmith shop, in limestone rock; chiseled square painted "461".....	460. 93

La Grange, 3 miles northeast of, 15 feet east of road, in limestone boulder; chiseled square painted "474".....	Feet. 473. 96
La Grange, 2.2 miles northeast of, on La Grange and Maxfield road, concrete culvert over small stream, in center of east concrete rail; bronze tablet stamped "376".....	375. 687
La Grange, 1 mile east of, on La Grange and Maxfield road, railroad crossing, top of west rail; painted "296".....	295. 62
La Grange, at cemetery on hill, on west foundation stone of north gate; chiseled square painted "317".....	316. 53
La Grange, 1.3 miles south of, 25 feet east of road, in large sandstone boulder; bronze tablet stamped "282".....	282. 340
La Grange, 2.4 miles south of, 20 feet east of road, in sandstone boulder; chiseled square painted "246".....	245. 77
South La Grange, highway bridge over railroad, in east end of south abutment; chiseled square painted "208".....	207. 79
South La Grange, 1.2 miles south of, on top of hill, 10 feet east of road, in sandstone boulder; bronze tablet stamped "211".....	210. 899
South La Grange, 2.3 miles south of, in northwest corner of floor of bridge over small stream; copper nail painted "158".....	157. 65
South La Grange, 3.5 miles south of, 10 feet east of road, in small rock; chiseled square painted "203".....	202. 88
South La Grange, 4.2 miles south of, road forks, in rock at base of sign post; chiseled square painted "195".....	194. 98
South La Grange, 5.1 miles south of, road forks, 20 feet south of center of forks, in root of pine tree; copper nail painted "221".....	220. 74

PASSADUMKEAG QUADRANGLE.

[Latitude 45°-45° 15'; longitude 68° 30'-68° 45'.]

From Enfield west along highway to point 4.1 miles west of Howland.

Enfield, 1 mile west of, bridge over small stream, in west end of south side of bridge; copper nail painted "162".....	162. 15
Enfield, 2.4 miles west of, 500 feet east of road forks, 10 feet north of road in top of rock culvert over small stream; chiseled square painted "181"....	181. 51
West Enfield, in north end of west abutment of highway bridge over the Penobscot River; bronze tablet stamped "153".....	152. 652
Howland, 0.8 mile west of, on top of hill, 10 feet north of road, in sandstone boulder; chiseled square painted "227".....	226. 95
Howland, 2 miles west of, bridge over small stream, in east end of north concrete rail; chiseled square painted "163".....	162. 71
Howland, 3.2 miles west of, 20 feet south of road, in top of pointed boulder; bronze tablet stamped "241".....	241. 018

From point 3 miles west of Argyle along highways east to Argyle, thence southeast to Costigan.

Argyle, 3 miles west of, road forks at signpost marked "Argyle 3 miles; La Grange 10 miles," 200 feet northeast of signpost, in concrete door step of Andrew Hotch's residence; bronze tablet stamped "222".....	222. 196
Argyle, 2 miles west of, ridge over Birch Creek, in northeast corner of bridge floor; copper bench mark nail painted "122".....	122. 02
Argyle, 1 mile west of, 20 feet north of road, in sandstone rock; chiseled square painted "178".....	177. 67
Argyle, 0.2 mile south of post office, at road forks at Argyle schoolhouse No. 1, in top of southwest foundation stone; bronze tablet stamped "127"....	126. 333

Argyle, 1.3 miles south of post office, road forks 20 feet north of center of forks, in sandstone rock; chiseled square painted "132".....	Feet. 131. 81
Argyle, 2.5 miles south of post office, concrete culvert over small stream, in center of west concrete rail; bronze tablet stamped "128".....	127. 987
Costigan, 215 feet north of station, in east end of south abutment of railroad bridge; aluminum tablet stamped "115" (U. S. Geol. Survey Bull. 437 p. 23).....	114. 979

From Costigan east along highway 6 miles. Spur leveled twice.

Costigan, 1 mile east of, in north end of bridge beam of wooden bridge over culvert; wire nail, painted "122".....	121. 55
Costigan, 2.2 miles east of, 10 feet north of road, in sandstone rock; chiseled square, painted "205".....	205. 07
Costigan, 3.3 miles east of, road forks at "Spearin" schoolhouse No. 7, 100 feet northwest of center of intersection of forks, in sandstone rock; bronze tablet stamped "175".....	175. 473
Costigan, 4.6 miles east of, 10 feet south of road, in sandstone rock; chiseled square, painted "182".....	181. 70
Costigan, 5.6 miles east of, road forks at signpost marked "Greenfield 5 miles; Olamon 8 miles, Milford 11 miles," 20 feet south of signpost, in limestone rock; chiseled square "188".....	187. 73
Costigan, 6.1 miles east of, road forks, 200 feet west of intersection of forks, in north of road, in limestone boulder; bronze tablet stamped "174"....	174. 530

From Enfield southeast along highways to East Lowell, thence southwest to Olamon. Portion of line.

Enfield, road crossing at, 5 feet east of east rail, in board of crossing floor; wire nail, painted "199".....	199. 25
Enfield, 1 mile east of, in east end of north side of bridge over small stream; wire nail, painted "140".....	139. 90
Enfield, 0.7 mile south of post office, road forks on sandstone rock; chiseled square, painted "250".....	249. 76
Enfield, 1.7 miles southeast of post office, on west side of road, in granite rock; chiseled square, painted "366".....	366. 37
Enfield, 2.5 miles southeast of post office, road forks at signpost marked "Lowell 4 miles; Enfield 2.5 miles", 100 feet northwest of signpost in limestone boulder; bronze tablet stamped "351".....	350. 750
Enfield, 3.5 miles southeast of post office, 15 feet north of road, in sandstone rock; chiseled square, painted "335".....	335. 16
Lowell, 5 miles southwest of post office, 10 feet east of road, in sandstone rock; chiseled square, painted "171".....	171. 47
Lowell, 6 miles southwest of post office, 10 feet west of road, in sandstone rock; chiseled square, painted "175".....	175. 05
Olamon, 2.5 miles southeast of, crossroads at signpost marked "Lowell 6.5 miles, Olamon 2.5 miles," 40 feet northwest of center of crossroads, in sandstone boulder; bronze tablet stamped "255".....	254. 609
Olamon, 1.5 miles southeast of, 80 feet southwest of center of crossroads, in sandstone boulder; chiseled square, painted "203".....	202. 94
Olamon, 0.6 mile east of, at southeast end of bridge over stream, in sandstone rock; chiseled square "133".....	134. 37
Olamon, 0.7 mile north of, east side of track, in milepost marked "Vanceboro 87 miles; Portland 164 miles;" aluminum tablet stamped "144" (U. S. Geol. Survey Bull. 437, p. 23).....	143. 957

SUPONIC QUADRANGLE.

[Latitude 45°-45° 15'; longitude 68° 15'-68° 30'.]

From Enfield southeast along highways to East Lowell, thence southwest to Olamon.
Portion of line.

Enfield, 5.5 miles southeast of post office, 15 feet south of road, in limestone rock; chiseled square, painted "334".....	Feet. 333. 79
Enfield, 6.8 miles southeast of post office, 15 feet south of road, in limestone rock; chiseled square, painted "342".....	341. 75
East Lowell post office, at crossroads, 70 feet southeast of center of crossroads, in sandstone rock; bronze tablet stamped "281".....	280. 711
East Lowell, 0.7 mile south of post office, in rock on south bank of small stream; chiseled square, painted "208".....	207. 72
Lowell post office, in west side of north end of iron bridge over Passadumkeag River; iron bolt, painted "177".....	177. 23
Lowell, 1 mile west of post office, 10 feet south of road, in limestone rock; bronze tablet stamped "163".....	163. 122
Lowell, 2 miles southwest of post office, 15 feet south of road, in sandstone rock; chiseled square, painted "164".....	164. 72
Lowell, 3 miles southwest of post office, 15 feet south of road in sandstone rock; chiseled square, painted "175".....	174. 62
Lowell, 4 miles southwest of post office, bridge over Passadumkeag River, 150 feet southwest of center of bridge, in sandstone rock; bronze tablet stamped "139".....	139. 375
Passadumkeag River; surface of water, July 19, 1915.....	135. 3

Cherryfield quadrangle.

WASHINGTON COUNTY.

The elevations published in the following list are based on a bronze tablet at Millbridge, one-third mile southeast of post office, in brown rock ledge on shore of harbor and 70 feet south of Sawyer's sardine wharf, stamped "7 B 1901," the elevation of which is 7.247 feet above mean sea level, as determined by connection with tide gage at Millbridge upon which high and low water readings were made daily during a period of one lunar month in July and August, 1901. The standard bench marks depending on this datum are referred through sea-level connections to the central datum at Bangor and are stamped with the letter "B" in addition to the figures of elevation and year. The leveling was done in 1901 by A. S. Havens.

[Latitude 44° 30'-44° 45'; longitude 67° 45'-68°.]

From Millbridge along highways via Steuben and Unionville to Cherryfield.

Millbridge, at end of Sawyer's sardine wharf, 10 feet from southwest corner; ringbolt through stringpiece.....	Feet. 9. 56
Millbridge, 70 feet south of Sawyer's sardine wharf, in brown rock ledge on shore of harbor; bronze tablet stamped "7 B 1901".....	7. 247
Millbridge, northeast corner of Main Street and road to sardine wharf, on granite post; chisel mark.....	33. 24
Millbridge, southeast corner of Main Street and Harrington road (signboard reads "Harrington 8 miles"), on granite post; chisel mark.....	48. 57

Steuben, at northwest corner of road intersection, on granite post (sign board reads "Gouldsboro 5 miles, Unionville 6 miles"); chisel mark. . . .	Feet. 46.32
Cherryfield, 0.1 mile south of station, in northwest corner of junction of east-west road (signboard reads "Franklin 18 miles, Harrington 6 miles"), in face of rock ledge; bronze tablet stamped "44 B 1901".....	44.444
From Cherryfield east to Harrington, thence northeast to Epping, thence west via Schoodic Lake to Great Falls branch Schoodic Brook, thence southeast to Cherryfield.	
Harrington, 0.6 mile west of, at east end of new steel bridge over Harrington River, on south side of abutment; bronze tablet stamped "B 14 1901".....	14.044
Epping, 1.25 miles west of, 60 feet west of crossroad from Columbia railroad station, 10 feet south of road, on bowlder; bronze tablet stamped "226 B 1901".....	226.117
Epping, 3.5 miles west of, East Base Coast and Geodetic Survey base line station, on granite monument; bronze bolt.....	254.187
Cherryfield, 9.3 miles northwest of, on Denlois road, 1 mile southeast of road fork to Epping, 40 feet north of bridge over Great Falls Branch Schoodic Brook, 5 feet west of road, in face of large gray bowlder; bronze tablet stamped "151 B 1901".....	151.128

Cutler and Eastport quadrangles.**WASHINGTON COUNTY.**

The elevations in the following list depend on the height of a tidal bench mark described as "a hole drilled on Gun Rock, Lubec Channel," the height of which was determined by the United States Engineer Corps in 1878 from fifty-six consecutive day and night observations.¹

The circuit on Eastport quadrangle was closed through water levels between Eastport and Lubec.

The leveling was done in 1907 by H. M. Gilman.

EASTPORT QUADRANGLE.

[Latitude 44° 45'–45"; longitude 67°–67° 15'.]

From Lubec southwest along highways to Whiting, thence northwest to Dennysville, thence east via West Pembroke to Eastport.

Lubec, Lubec Channel, in top of rounded rock, known as Gun Rock, in base of extremity of breakwater, established by United States Engineer Corps in 1878 (observations by Capt. Trott, of Lubec); drill hole.....	Feet. 8.291
Lubec, northeast of road, in southwest face of foundation of Disciples Church; aluminum tablet stamped "118, 1907".....	118.852
West Lubec, 1.2 miles east of, 500 feet west of small wooden bridge in hollow, 250 feet north of road, in rock ledge; aluminum tablet stamped "45, 1907".....	46.082
Whiting, 3.4 miles east of, 2 miles southwest of West Lubec, south edge of road, 250 feet south of John Craig's house, in rock ledge; aluminum tablet stamped "96, 1907".....	97.076
Whiting, 0.3 mile east of road forks, 5 feet north of road at edge of stream in hollow, in top surface of rock ledge; aluminum tablet stamped "20, 1907".....	20.940
Whiting, 2.5 miles north of, 80 feet south of large iron bridge east of road in top of rock ledge; aluminum tablet stamped "20, 1907".....	20.322

¹ See Report of Chief of Engineers for 1879, Appendix A, pp. 280–282.

	Feet.
Dennysville, 3.5 miles south of, 30 feet west of road, 80 feet northeast of house at bend in road, in top face of rock ledge; aluminum tablet stamped "147, 1907"	147.671
Dennysville, 660 feet southeast of bridge over Dennys River, near top of hill by schoolhouse, in top face of rock ledge southwest of road; aluminum tablet stamped "86, 1907"	87.005
Dennysville, 3 miles north of, 3.2 miles southwest of Pembroke, opposite schoolhouse south of road, in rock ledge north of road; aluminum tablet stamped "141, 1907"	141.965
West Pembroke, 100 feet north of Union League Church, south of road, in rock ledge; aluminum tablet stamped "68, 1907"	68.369
Pembroke, 4 miles east of, 6.7 miles northwest of Eastport, 500 feet southeast of road forks, on opposite side of road from C. H. Leones's house, in top of rock ledge west of road; aluminum tablet stamped "62, 1907"	62.975
Eastport, 3.5 miles northwest of, 500 feet east of toll bridge, in west end of stone watering trough at top of hill; aluminum tablet stamped "62, 1907"	62.657
Eastport, corner of Washington and Water streets, in west face of southwest corner of granite belting course of customhouse and post office; aluminum tablet stamped "40, 1907"	40.920

CUTLER QUADRANGLE.

[Latitude 44° 30'-44° 45'; longitude 67°-67° 15'.]

From West Lubec southwest along highways to Cutler, thence north to Whiting.

West Lubec, 3.2 miles south of, 500 feet west of stream crossing, in front of Stewart McFadden's house, 5 feet south of road, in rock ledge; aluminum tablet stamped "22, 1907"	22.440
West Lubec, 6.3 miles southwest of, 7.5 miles northeast of Cutler, at end of T road north, north side of road, in top of rock ledge; aluminum tablet stamped "31, 1907"	31.600
Cutler, 3 miles northeast of, 110 feet north of road, 80 feet west of small house on hill, in rock ledge; aluminum tablet stamped "136, 1907"	136.226
Cutler, 600 feet west of road forks, north of road, in front of Samuel Maker's house, in top face of rock ledge; aluminum tablet stamped "24, 1907"	24.835
Cutler, 3.2 miles north of, 1,200 feet south of stream crossing, in top of large rock 5 feet west of road; aluminum tablet stamped "156, 1907"	156.536
Cutler, 6.5 miles north of, 4 miles south of Whiting, 0.4 mile north of Springbrook crossing, 10 feet west of road, in top face of rock; aluminum tablet stamped "109, 1907"	110.082

Augusta, Bath, Bethel, Bryant Pond, Buckfield, Dixfield, Freeport, Gardiner, Lewiston, and Livermore quadrangles.

ANDROSCOGGIN, CUMBERLAND, FRANKLIN, KENNEBEC, OXFORD, AND SAGadahoc COUNTIES.

The elevations in the following list of bench marks established by the water-resources branch of the United States Geological Survey under the general direction of H. K. Barrows, district engineer, were determined by a double-rodged primary-level line extended from Augusta along the Maine Central Railroad to Brunswick; thence up Androscoggin River along railroad and highways to Errol, N. H. The New Hampshire elevations are not included in this list. The leveling was begun at a gage bench mark at Hallowell, Me., the stated elevation of which later proved to be unreliable. The elevations

now given are based on mean sea level determined by gage record at Portland, and accord with elevations determined by precise leveling of the topographic branch of the Geological Survey, from Portland to Brunswick, as given in another list (p. 9). At Turner Bridge, 39.7 miles from Brunswick, a 1-foot error was discovered by certain checked relevelings, and the remainder of the line was corrected by that amount; but there yet remains an outstanding discrepancy of 2.3 feet between this line and levels of the topographic branch at Bethel.

In running the base levels of 1905, from Hallowell via Brunswick to Livermore Falls, H. S. Boardman was chief of party. In running the base levels of 1906, from Livermore Falls to Errol, N. H., C. Robert Adams and T. W. Norcross were chiefs of party.

From Augusta southwest along Maine Central R. R. and highway to Brunswick. Double-rodged line.

Distance in miles.	Location and description of bench mark.	Elevation in feet.
AUGUSTA QUADRANGLE.		
[Latitude 44° 15'-44° 30'; longitude 69° 45'-70°.]		
.....	Augusta, northwest corner of west wing of statehouse; aluminum tablet.....	152.950
.....	Hallowell, southwest corner of cotton mill on Water Street; horizontal chisel mark (Coast and Geodetic Survey bench mark No. 2).....	27.091
GARDINER QUADRANGLE.		
[Latitude 44°-44° 15'; longitude 69° 45'-70°.]		
.....	Gardiner, opposite post office, in northeast corner of Savings Institution Building; aluminum tablet.....	25.417
.....	Richmond, building used for post office, in left side of entrance; aluminum tablet.....	30.935
.....	Bowdoinham, in west abutment of highway bridge over Cathance River; aluminum tablet.....	7.117
BATH QUADRANGLE.		
[Latitude 43° 45'-44°; longitude 69° 45'-70°.]		
.....	Topsham, on east abutment of railroad bridge over Topsham Street, west of track; marked "41.5".....	44.139
.....	Brunswick, in left side of front entrance to building used as post office and town hall; aluminum tablet.....	69.589

From Brunswick north along Maine Central R. R. and highway up Androscoggin River.

FREEPORT QUADRANGLE.		
[Latitude 43° 45'-44°; longitude 70°-70° 15'.]		
3.1	Pejepscot, 58.5 feet south of center of track, 60 feet north of north end of railroad station, in pasture belonging to Emory Barnes, in ledge; aluminum tablet.....	175.421
9.9	Lisbon Falls, about 10½ miles from Lewiston, at side of river opposite lower end of Frosts Park, in ledge; aluminum tablet.....	111.231
LEWISTON QUADRANGLE.		
[Latitude 44°-44° 15'; longitude 70°-70° 15'.]		
14.0	Lewiston, 6½ miles from, on south abutment of Moody Brook Bridge, east of track; point marked "U. S. 184".....	186.683
15.2	Lewiston, 5.3 miles from, on west abutment of Crowley's bridge, south of track; point marked "S".....	190.098
20.6	Lewiston, on west end of Dam No. 4, Union Water Power Company; point marked "S".....	170.608
24.9	Dingley farm, 300 feet east of road, near north line, in large bowlder; aluminum tablet.....	265.527
26.7	Babbett & Goggin dam, in high point of ledge below (ledge is in bed of river and is an island during high water); aluminum tablet.....	225.889

From Brunswick north along Maine Central R. R. and highway up Androscoggin River—Contd.

Distance in miles.	Location and description of bench mark.	Elevation in feet.
LIVERMORE QUADRANGLE.		
[Latitude 44° 15'-44° 30'; longitude 70°-70° 15'.]		
36.2	Keens Mills Cemetery, about 0.25 mile north of, 150 feet east of highway, on river road, in low flat ledge; aluminum tablet.....	283.111
45.6	Strickland, about 1.8 miles above station, 150 feet north of A. E. Hunton's house, about 200 feet east of road, in ledge; aluminum tablet.....	296.970
50.9	Farmington, 17.6 miles from east abutment of Shuey plate-girder bridge; aluminum tablet.....	300.038
51.9	Livermore Falls, in southwest corner of post-office building; aluminum tablet.....	349.355

From Livermore Falls along the Maine Central R. R. and the Grand Trunk Ry. and highways up Androscoggin River to Errol, N. H.

LIVERMORE QUADRANGLE.		
.....	Livermore Falls, in southwest corner of post-office building; aluminum tablet.....	349.355
1.2	Chisholm, 0.5 mile north of station, in downstream side of east abutment of Maine Central R. R. bridge over Androscoggin River; aluminum tablet (set horizontally).....	355.716
2.7	Jay Bridge, 73 feet west of station, in vertical face of large boulder; aluminum tablet.....	382.965
4.9	Rileys, 176 feet north of station, in granite rock ledge; aluminum tablet.....	396.175
BUCKFIELD QUADRANGLE.		
[Latitude 44° 15'-44° 30'; longitude 70° 15'-70° 30'.]		
8.2	Meadowview, near the west end of the first "out" west of, in first granite ledge west of Meadowview station, south of railway; aluminum tablet.....	391.726
10.4	Gilbertville, on right upstream bridge seat of steel highway bridge over Androscoggin River; aluminum tablet.....	395.591
14.9	East Peru, 0.3 mile east of, on northwest bridge seat of railroad bridge over Worthley Brook; aluminum tablet.....	394.961
DIXFIELD QUADRANGLE.		
[Latitude 44° 30'-44° 45'; longitude 70° 15'-70° 30'.]		
20.4	Androscoggin River, bridge over, between West Peru and Dixfield, cemented in southwest bridge seat of highway; aluminum tablet.....	411.482
BRYANT POND QUADRANGLE.		
[Latitude 44° 15'-44° 30'; longitude 70° 30'-70° 45'.]		
25.2	Rumford Falls, in northeast corner of Rumford Water Co.'s building on Commerce Street; aluminum tablet.....	507.787
26.1	Rumford Falls, on southwest corner of bridge seat of west abutment of highway bridge over the river just above the upper dam; aluminum tablet.....	625.447
32.9	Rumford Center, 0.25 mile from, about 120 feet west of Rumford Center-Rumford Point; easily seen about 5 feet higher than road, set approximately vertical on east side of boulder at base of hill, opposite point halfway between blazed telegraph poles; aluminum tablet.....	629.508
35.4	Rumford Point, in southeast corner of foundation of A. J. Marbles's house; aluminum tablet.....	635.876
BETHEL QUADRANGLE.		
[Latitude 44° 15'-44° 30'; longitude 70° 30'-70° 45'.]		
42.5	Newry Corner (on road to Bethel), 500 feet south of, in east corner of north abutment of high bridge over Bear River; aluminum tablet.....	635.916
48.2	Androscoggin River, highway bridge over, between Mayville and Bethel, in west end of south abutment of; aluminum tablet ^a	647.566
53.2	West Bethel, 1 mile west of, in northeast corner of east abutment of highway bridge over Pleasant River; aluminum tablet.....	655.764
58.7	Gilead, 0.5 mile west of, in north corner (second course from top) of east abutment of Grand Trunk Railway bridge over Wild River; aluminum tablet.....	712.052

^a The elevation of this bench mark by topographic branch from Portland is 649.885.

Brassua Lake, Chesuncook, Churchill Lake, Harrington Lake, Long Pond, Matagamon, Millinocket, Moosehead, Mount Katahdin, Norcross, Northeast Carry, Shin Ponds, Staceyville, and Telos Lake quadrangles.

PENOBSCOT, PISCATAQUIS, AND SOMERSET COUNTIES.

The elevations in the following list of bench marks established by the water-resources branch of the United States Geological Survey, under the general direction of H. K. Barrows, district engineer, were determined from double-rodged primary-level lines run with a 20-inch Gurley wye level and two Philadelphia rods. These elevations result from a preliminary adjustment, under which the elevations at Medway and Moosehead, determined by the primary-level lines of the topographic branch extended from Bangor and Portland were accepted without correction. A new adjustment will not be made unless shown to be advisable when additional primary connections have been made between Penobscot and Kennebec rivers.

In running the base levels of 1905 from Chesuncook to Northeast Carry and from Moosehead west to Jackman, George M. Brett was chief of party. In running the base levels of 1906 on West Branch Penobscot River, from Chesuncook Lake southeast to Norcross, and the base levels of 1907 from Allagash Lake to Grand Lake dam H. S. Boardman was chief of party. In running the base levels of 1908 from Grand Lake dam southeast down East Branch Penobscot River to Medway H. S. Boardman was chief of party and A. L. Grover was instrument man.

From Chesuncook to Northeast Carry.

Distance in miles.	Location and description of bench mark.	Elevation in feet.
CHESUNCOOK QUADRANGLE.		
[Latitude 46°-46° 15'; longitude 69° 15'-69° 30'.]		
.....	Chesuncook, 18 feet east of post office, in top of 6-foot post; iron bolt.....	934.931
.....	Chesuncook, 150 feet south of post office, in root of stump; nail.....	931.757
.....	Chesuncook Hotel, 1,000 feet west of, in telephone pole at top of hill; spike.....	1,009.133
1.6	Chesuncook, 1.6 miles from; in pine tree on right side of trail; nail.....	1,015.318
2.5	Chesuncook, 2.5 miles from, small bowlder on left side of trail.....	930.449
2.94	Chesuncook, 2.94 miles from, 1,000 feet below mouth of Pinetree Stream, 10 feet above water, on right bank of Penobscot River, in ledge; aluminum tablet (permanent bench mark No. 1).....	936.907
3.39	Chesuncook, 3.39 miles from, in stump on right side of trail; nail.....	946.668
3.39	Chesuncook, 3.39 miles from; top of bowlder right side of trail.....	949.060
4.17	In telephone pole; spike.....	1,005.350
5.72	Foxhole Rips, at foot of, in ledge on right bank of river; aluminum tablet (permanent bench mark No. 2).....	945.027
6.6	Jim Smith's halfway house, 3.1 miles below, in pine tree at southwest end of field; nail.....	951.444
7.3	In root of pine tree at right of trail; nail.....	979.059
7.95	In root of cedar tree at left of trail; nail.....	961.358
8.14	On bowlder at edge of water.....	954.868
8.7	In root of cedar tree at right of trail; spike.....	968.291

From Chesuncook to Northeast Carry—Continued.

Distance in miles.	Location and description of bench mark.	Elevation in feet.
NORTHEAST CARRY QUADRANGLE.		
[Latitude 45° 45'-46°; longitude 69° 30'-69° 45'.]		
9.7	Jim Smith's halfway house, 150 feet west of, in vertical face of boulder on right bank, 1 foot from ground; aluminum tablet (permanent bench mark No. 3).....	964.571
10.35	In fir tree at right of trail, 3 feet from ground; nail.....	985.635
10.5	In root of fir tree at right of trail; nail.....	995.457
11.7	Moosehorn Stream, 225 feet above, in poplar tree at right of trail, 1.5 feet from ground; iron pin.....	969.497
11.9	In poplar tree at right of trail, 1 foot from ground; spike.....	971.747
13.3	In root of large poplar tree at right of trail; nail.....	969.117
13.9	In root of birch tree at left of trail; nail.....	969.784
14.4	In birch stump at left of trail; nail.....	971.249
15.6	In root of spruce tree at left of trail; spike.....	970.814
16.2	In root of cedar tree at right of trail; spike.....	973.243
16.99	In root of fir tree at left of trail; spike.....	973.020
17.59	In root of fir tree at right of trail; spike.....	970.971
17.9	Lobster Stream, east end of bridge over, nearly flush with ground; long iron bolt driven into top of stump.....	979.269
18.4	In telephone pole at right of trail; spike.....	972.198
19.5	In root of fir tree at left of trail; spike.....	972.307
20.5	Landing place at river, 500 feet south from, at left of road to Northeast Carry; top of boulder.....	980.336
21.8	Northeast Carry, 0.5 mile north of, in root of poplar tree west of road; nail.....	1,077.924
22.5	Northeast Carry, 200 feet southwest of Winnegarnock House, about 100 feet from shore of Moosehead Lake, on top of boulder; aluminum tablet (permanent bench mark No. 4).....	1,033.429
	Bench mark of Kennebec Water Power Co., marked "22.36;" copper bolt cemented in same boulder.....	1,033.594

From Moosehead west to Jackman.

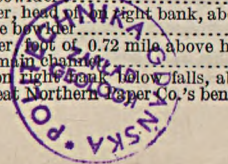
MOOSEHEAD QUADRANGLE.		
[Latitude 45° 30'-45° 45'; longitude 69° 30'-69° 45'.]		
.....	Moosehead, abutment of Canadian Pacific Ry. bridge, southeast corner, on east side of Moosehead Lake; aluminum tablet stamped "1026 Augusta" (permanent bench mark No. 1).....	1,028.154
0.86	In third telegraph pole southeast of signpost "Moosehead 1 mile" at left of track, 1 foot from ground; railroad spike.....	1,064.979
2.8	In third telegraph pole west of milepost 47, 1 foot from ground; railroad spike.....	1,018.451
BRASSUA LAKE QUADRANGLE.		
[Latitude 45° 30'-45° 45'; longitude 69° 45'-70°.]		
3.9	Milepost 48, 800 feet west of, south of track; small boulder.....	1,027.079
4.4	Moosehead, 4.4 miles west of, on top of top stone of northeast wing wall of bridge over west outlet of Moosehead Lake; aluminum tablet (permanent bench mark No. 2).....	1,028.215
5.95	Rock at south side of track.....	1,105.040
7.74	Askwith, 1,000 feet west of, on top of top stone of southeast wing wall of bridge over Misery Stream; aluminum tablet (permanent bench mark No. 3).....	1,109.807
9.73	Milepost 54, 350 feet east of, south of track; boulder.....	1,081.662
11.06	Milepost 55, about 1,200 feet west of, north of track; boulder.....	1,112.959
12.71	In fourth telegraph pole east of milepost 57, south of track, 2 feet from ground; spike.....	1,138.652
.....	Milepost 58; spike (temporary bench mark of Canadian Pacific Ry.).....	1,171.516
14.6	Mackcamp, 1.5 miles east of, 25 feet east of end of dam, 15 feet south of storehouse, in boulder near south end of Long Pond dam on Moose River; aluminum tablet (permanent bench mark No. 4).....	1,159.911
14.7	Milepost 59; spike (temporary bench mark of Canadian Pacific Ry.).....	1,173.091
15.53	Mackcamp, 0.5 mile east of, 1,300 feet east of milepost 60; boulder south of railroad track.....	1,168.883
17.2	Mackcamp, 1 mile west of, opposite sign "Mackcamp 1 mile;" boulder north of track.....	1,179.401
LONG POND QUADRANGLE.		
[Latitude 45° 30'-45° 45'; longitude 70°-70° 15'.]		
.....	Brassua Lake, on east shore 20 feet from water, 2,000 feet from mouth of Misery Stream, 4,900 feet from Moose River outlet, on top of boulder; aluminum tablet.....	1,050.72
18.88	Opposite milepost 63; boulder north of track.....	1,185.980
19.2	Mackcamp, 3 miles west of, on top stone of northeast abutment of bridge over Parlin Stream; aluminum tablet (permanent bench mark No. 5).....	1,168.973
.....	Milepost 64; spike (temporary bench mark of Canadian Pacific Ry.).....	1,163.311
22.22	Long Pond station, 800 feet west of; boulder 25 feet south of track.....	1,177.959
24.3	Long Pond, 75 feet from shore of, where railroad leaves the pond; northeast corner of stone culvert under railroad track.....	1,177.475
26.55	Milepost 71, 0.25 mile east of, in telegraph pole south of track; spike.....	1,165.693

From Moosehead west to Jackman—Continued.

Distance in miles.	Location and description of bench mark.	Elevation in feet.
LONG POND QUADRANGLE—continued.		
29.56	Jackman, opposite railroad station; boulder south of track.....	1,222.212
30.2	Jackman, about 3,300 feet west of station; small boulder south of track.....	1,199.445
31.51	Jackman, 2 miles west of, on northeast abutment of railroad bridge over Moose River between Wood and Attean ponds; aluminum tablet (permanent bench mark No. 6).....	1,170.357

From Chesuncook Lake southeast on West Branch Penobscot River to Norcross.

HARRINGTON LAKE QUADRANGLE.		
[Latitude 45° 45'-46°; longitude 69°-69° 15'.]		
.....	Chesuncook Lake, at foot of, 100 feet south and 30 feet east of end of dam; Great Northern Paper Company's bench mark No. 15 (elevation given, 945.647).....	943.019
.....	Chesuncook dam, near south end of; on large rock marked "G S".....	936.102 935.440
.....	Chesuncook dam, in top of high ledge just south of south wing; aluminum tablet (permanent bench mark No. 1).....	956.741
0.70	Ripogenus Lake, head of, lower end of long carry, on two medium-sized boulders; marked "G S".....	897.752 897.311
2.94	Ripogenus Lake, foot of, near shore in front of hovel; on rock; marked "U S G S".....	892.936 892.594
3.65	Ripogenus Lake, below, on rock by ledge along carry road, marked "G S".....	978.213 978.450
4.03	On rock on top of highest steep pitch, near big yellow birch on carry road marked "Elevation 976.44" (Great Northern Paper Co.'s bench mark No. 13).....	973.943
4.40	Carry road, 20 feet north of, on black rock about 2 feet wide by 2½ feet long, by 2 feet high, on top of knoll of putting-in place, small fir 10 feet west marked "Elevation 799.64" (Great Northern Paper Co.'s bench mark No. 12).....	797.137
5.11	"The Arches," in ledge, pine tree beside the carry road on which is placed telephone box bears N. 80° W. 57 feet, end of wing dam bears about N. 45° E. 175 feet; aluminum tablet (permanent bench mark No. 2).....	724.831
5.37	Big Eddy, north of road, about 200 feet above clearing, maple tree 6 inches in diameter 5 feet east of rock marked "Elevation 688.96," large triangular rock; point of rock (Great Northern Paper Co.'s bench mark No. 11).....	686.487
5.45	Big Eddy, at southwest corner of grass plot, about 13 feet from large pine tree marked "Elevation 683.76;" painted stone (Great Northern Paper Co.'s bench mark No. 10).....	681.288
5.49	Big Eddy, on roof of pine tree near camp; turning points marked "U S G S".....	683.046 682.659
6.48	Little Ambajemackomus Falls, on rock 500 feet below foot of falls, on right shore, marked "U S G S".....	659.496 659.725
7.28	Big Ambajemackomus Falls, rock on right shore at head of falls, marked "U S G S".....	657.867 657.627
8.56	Horse Race on good-sized white rock near where new telephone line crosses river; point of cross marked "B M elevation 623.74 U. S. G S" (Great Northern Paper Co.'s bench mark No. 9).....	621.190
8.95	Horse Race, foot of, on right shore, in top of boulder on small knoll about 75 feet from river, about 220 feet from dead water, birch tree 12 inches in diameter bears west 12 feet, marked "U S G S B M No. 3;" aluminum tablet (permanent bench mark No. 3).....	617.296
11.17	Sourdnahunk Deadwater, foot of, on left bank, 1,100 feet above dam, on rock marked "U S G S".....	605.132 604.867
11.32	Sourdnahunk dam, in ledge on upper end of "heater" above overflow of dam (station "S" on cross-section work of August, 1903, elevation 617.36); wooden plug with nail in center (Great Northern Paper Co.'s bench mark No. 8).....	614.801
MOUNT KATAHDIN QUADRANGLE.		
[Latitude 45° 45'-46°; longitude 68° 45'-69°.]		
14.02	Katahdin Stream, about 0.25 mile above dryway at island, 250 feet from and on opposite from dryway, on large boulder marked "U S G S".....	569.160 568.767
14.84	Abol Stream, opposite mouth of stream on right bank, on large boulder marked "U S G S".....	567.190 566.876
15.08	Abol carry road, right of river, beside road, near upper end of long carry road, 115 feet from bank, in top of large triangular boulder, poplar tree bears N. 17½ feet, another poplar tree bears E. 9 feet, spotted and marked "U S B M No. 4;" aluminum tablet (permanent bench mark No. 4).....	580.275
15.43	Abol Falls, on large round granite rock 30 feet northeast from north end of wing on carry side of the falls, elevation 571.945; mark (Great Northern Paper Co.'s bench mark No. 7).....	569.408
16.59	Packwackamus Falls, on right bank, opposite middle of lower pitch, 60 feet from lower end of carry, on boulder.....	534.432 534.056
17.64	Packwackamus Deadwater, head of, on right bank, about 200 feet below cottage of W. H. Gannett, on large boulder.....	531.569 530.577
18.95	Packwackamus Deadwater, foot of, 0.72 mile above head of Debsconeag Falls, on large rock in middle of main channel.....	533.721 533.326
19.94	Debsconeag Falls, rock on right bank below falls, above high water on largest granite rock; mark (Great Northern Paper Co.'s bench mark No. 5).....	513.910



From Chesuncook Lake southeast on West Branch Penobscot River to Norcross—Continued.

Distance in miles.	Location and description of bench mark.	Elevation in feet.
MOUNT KATAHDIN QUADRANGLE—continued.		
19.94	Debsconeag Falls, on right bank, near lower end of carry road, at foot of falls in top of largest granite rock; aluminum tablet set horizontally (permanent bench mark No. 5).....	513.858
20.82	Debsconeag Deadwater, head of, on two large boulders, 5 feet apart, left shore 75 feet north of landing at Joe Frances's ice house.....	503.705
22.53	Debsconeag Deadwater, foot of, on island 400 feet above Hopkins Pitch, on right bank of main channel, on two large boulders 6 feet apart.....	502.783
23.19	Passamagormuc Falls, head of, at upper end of short carry, left shore, 180 feet above head of falls, on two large boulders 6 feet apart.....	502.287
23.40	Passamagormuc Falls, foot of, on rock at putting-in place, Joe Cripp's camp, left bank in cove; cross on tree marked "T P elevation 488.733" (supposed to be Great Northern Paper Co.'s bench mark No. 3).....	502.060
24.36	Dead water between Passamagormuc and Ambajejus falls, on left bank, 300 feet above first island above Ambajejus Falls, on large rock.....	499.549
25.23	Ambajejus Falls, on right shore, at top of ridge, in rock; iron pin (Great Northern Paper Co.'s bench mark No. 2).....	499.648
25.39	Ambajejus Falls, above road at side of bluff between foot of falls and McPhetres Camp, on right bank, at head of Lake Ambajejus, in top of granite boulder; aluminum tablet set horizontally (permanent bench mark No. 6).....	491.055
25.39	Ambajejus Falls, near water's edge opposite bench mark No. 6, on large boulder.....	491.679
		491.933
		514.459
		496.608
		483.982
		482.622
NORCROSS QUADRANGLE.		
[Latitude 45° 30'–45° 45'; longitude 68° 45'–69°.]		
.....	North Twin Lake; Great Northern Paper Co.'s bench mark, elevation 503.480.....	503.42
.....	Norcross Cove; on boulder near old boat landing; Great Northern Paper Co.'s bench mark, elevation 488.661.....	488.568
.....	North Twin Lake (4.87 miles southwest of Millinocket), top of north pier at 24-foot gate opening; aluminum tablet stamped "495".....	494.562

From Allagash Lake to Grand Lake Dam.

[Distances in miles from Chesuncook.]

CHESUNCOOK QUADRANGLE.		
[Latitude 46°–46° 15'; longitude 69° 15'–69° 30'.]		
5.00	Umbazooksus Stream, beside carry at head of dead water (elevation 937.04 marked on blazed tree); point on rock (bench mark of Great Northern Paper Co.).....	934.357
5.00	On same rock, marked "U S G S No. 7;" point "A".....	934.332
5.91	Umbazooksus Stream, on right bank of, at water's edge; rock.....	939.131
5.91	On same rock, marked "U S G S No. 6;" point "A".....	939.558
7.16	Umbazooksus Lake, 35 feet from shore of, at end of Mud Pond carry; granite rock.....	946.372
7.16	On same rock, marked "U S G S No. 5;" point "A".....	947.043
8.12	Mud Pond, about 0.8 mile from putting-in place, 5 feet west of Mud Pond carry; rock.....	994.187
8.12	On same rock, marked "U S G S No. 4;" point "A".....	994.142
8.87	Mud Pond, at putting-in place at end of Mud Pond carry; rock.....	961.502
8.87	On same rock, marked "U S G S No. 3;" point "A".....	961.470
9.87	Mud Pond, 10 feet below north end of dam at outlet; granite boulder.....	958.649
9.87	On same rock, marked "U S G S No. 2;" point "A".....	958.379
10.05	Mud Pond Brook, about 80 feet north of, 60 feet east of logging camp; rock.....	953.806
10.05	On same rock, marked "U S G S No. 1;" point "A".....	953.620
10.45	Mud Pond Brook, 600 feet north of foot of quick water, 150 feet east of edge of woods, on top of outcropping ledge (at high water this ledge is entirely surrounded by several feet of water); aluminum tablet.....	946.234
TELOS LAKE QUADRANGLE.		
[Latitude 46°–46° 15'; longitude 69°–69° 15'.]		
23.56	Telos dam, about 250 feet from road, 735 feet from opening in woods, in boulder about 3 by 5 feet; aluminum tablet.....	967.101
24.45	Webster Lake, about 75 feet from shore of, in carry between Telos and Webster lakes, in turn around; rock.....	899.463
24.45	On same rock, marked "U S G S No. 13;" point "A".....	899.828
26.48	Webster Brook, 80 feet upstream from upper end of carry, in edge of lake (covered in time of high water); rock.....	895.876
26.48	On same rock, marked "U S G S No. 14;" point "A".....	895.717
28.63	Webster Brook carry, 1.15 miles from upper end and 2 feet south of; rock.....	917.048
28.63	On same rock, marked "U S G S No. 15;" point "A".....	917.069
29.48	Webster Brook carry, 2 miles from upper end and 2 feet south of; rock.....	831.431
29.48	On same rock, marked "U S G S No. 16;" point "A".....	830.989
30.73	Webster Brook carry, 3.25 miles from upper end and south of, beside blazed and marked tree; rock.....	800.849
30.73	On same rock, marked "U S G S No. 17;" point "A".....	801.101

From Allagash Lake to Grand Lake Dam—Continued.

Distance in miles.	Location and description of bench mark.	Elevation in feet.
MATAGAMON QUADRANGLE. [Latitude 46°-46' 15"; longitude 68° 45'-69'.]		
33.36	Indian Pitch, on south bank of Webster Brook, 200 feet upstream from dam, about 10 feet higher than surrounding country and 20 feet from water in brook, in outcropping ledge; aluminum tablet.....	790.385
34.73	Webster Brook carry, 10 feet south of, 1.25 miles below dam at Indian Pitch, in root of pine tree; nail.....	781.584
34.73	On root of same tree, marked "U S G S No. 13;" point "A".....	781.251
36.12	Second Lake, near head of, in west end of an outcropping ledge about 3 feet above the general surface of ground (ledge gradually rises toward the east, reaching a maximum height of about 35 feet); aluminum tablet.....	661.092
42.56	Grand Lake, shore of, near Harveys Landing, with chiseled letters and painted white circle around hemispherical head, set flush in ledge; iron bolt marked "U S".....	656.111
45.21	Grand Lake dam, 200 feet upstream from west end of, 10 feet from water's edge when gage at dam reads 13.5 feet, in outcropping ledge; aluminum tablet.....	662.078

From Chamberlain Lake northwest to Allagash Lake.

Distance in miles.	Location and description of bench mark.	Elevation in feet.
CHURCHILL LAKE QUADRANGLE. [Latitude 46° 15'-46° 30'; longitude 69° 15'-69° 30'.]		
9.60	Allagash Stream, 2 miles below Allagash Falls, in "tote" road near foot of quick water; rock 2½ feet broad and 1 foot high.....	945.763
9.60	On same rock, marked "U S G S No. 13;" point "A".....	945.677
10.60	Allagash Stream, 1 mile below Allagash Falls, 2 feet south of "tote" road; rock.....	960.033
10.60	On same rock, marked "U S G S No. 11;" point "A".....	959.472
11.60	Allagash Stream, at falls, on left bank of stream, 10 feet below wing dam; rock ledge.....	987.555
11.60	On ledge near above, marked "U S G S No. 10;" point "A".....	987.490
12.95	Allagash Stream, left bank of, 2 miles below dam at Allagash Lake; large broken bowlder in water's edge.....	992.347
12.95	On same bowlder, marked "U S G S No. 9;" point "A".....	992.269
14.25	Allagash Stream, left bank of, about 0.8 mile from dam at Allagash Lake; flat rock.....	1,015.340
14.25	On same rock, marked "U S G S No. 8;" point "A".....	1,014.968
14.95	Allagash Lake, 850 feet upstream from dam, about 175 feet from stream, in outcropping ledge 15 feet from "tote" road and behind a higher ledge which lies between tablet and stream; aluminum tablet.....	1,074.037

From Grand Lake Dam southeast down East Branch Penobscot River to Medway.

MATAGAMON QUADRANGLE. [Latitude 46°-46' 15"; longitude 68° 45'-69'.]		
5.82	Stair Falls, at head of lower pitch on right bank, on outcropping ledge 5 to 10 feet from edge of water; aluminum tablet.....	595.737
SHIN PONDS QUADRANGLE. [Latitude 46°-46' 15"; longitude 68° 30'-68° 45'.]		
10.66	Bowlin Falls, 40 feet from edge of water, on right bank at head of falls, in ledge; aluminum tablet.....	446.662
14.05	United States fish hatchery, on left bank opposite mouth of Little Spring Brook, in outcropping ledge known as Sufferers Rock; aluminum tablet.....	401.615
STACEYVILLE QUADRANGLE. [Latitude 45° 45'-46"; longitude 68° 30'-68° 45'.]		
24.60	Hunt Island, opposite head of, one-eighth mile above Matagamon House, in granite bowlder on east side of wagon road on left bank of river, about 25 feet from water's edge; aluminum tablet.....	352.554
27.40	Whetstone Falls, on left bank at foot of falls, about 25 feet from water's edge, about 150 feet above lower end of carry; rock ledge.....	339.955
33.06	Soldiers Brook, 300 feet above mouth, on right bank, in granite bowlder about 25 feet from mean low water edge; aluminum tablet.....	314.924
MILLINOCKET QUADRANGLE. [Latitude 45° 30'-45° 45'; longitude 68° 30'-68° 45'.]		
38.25	Grindstone, in north end of coping stone on east pier of Bangor and Aroostook Railroad bridge, left bank of river; aluminum tablet.....	317.153
45.59	Ledge Falls, in large flat-topped bowlder, 10 feet east of highway; tablet (not quite horizontal, elevation of highest point, not center).....	285.904
48.11	Medway, 0.27 mile west of, 50 feet east of road, 120 feet west of house of A. T. Reed, in ledge; aluminum tablet stamped "279".....	278.911

APPENDIX.

SECONDARY ELEVATIONS.

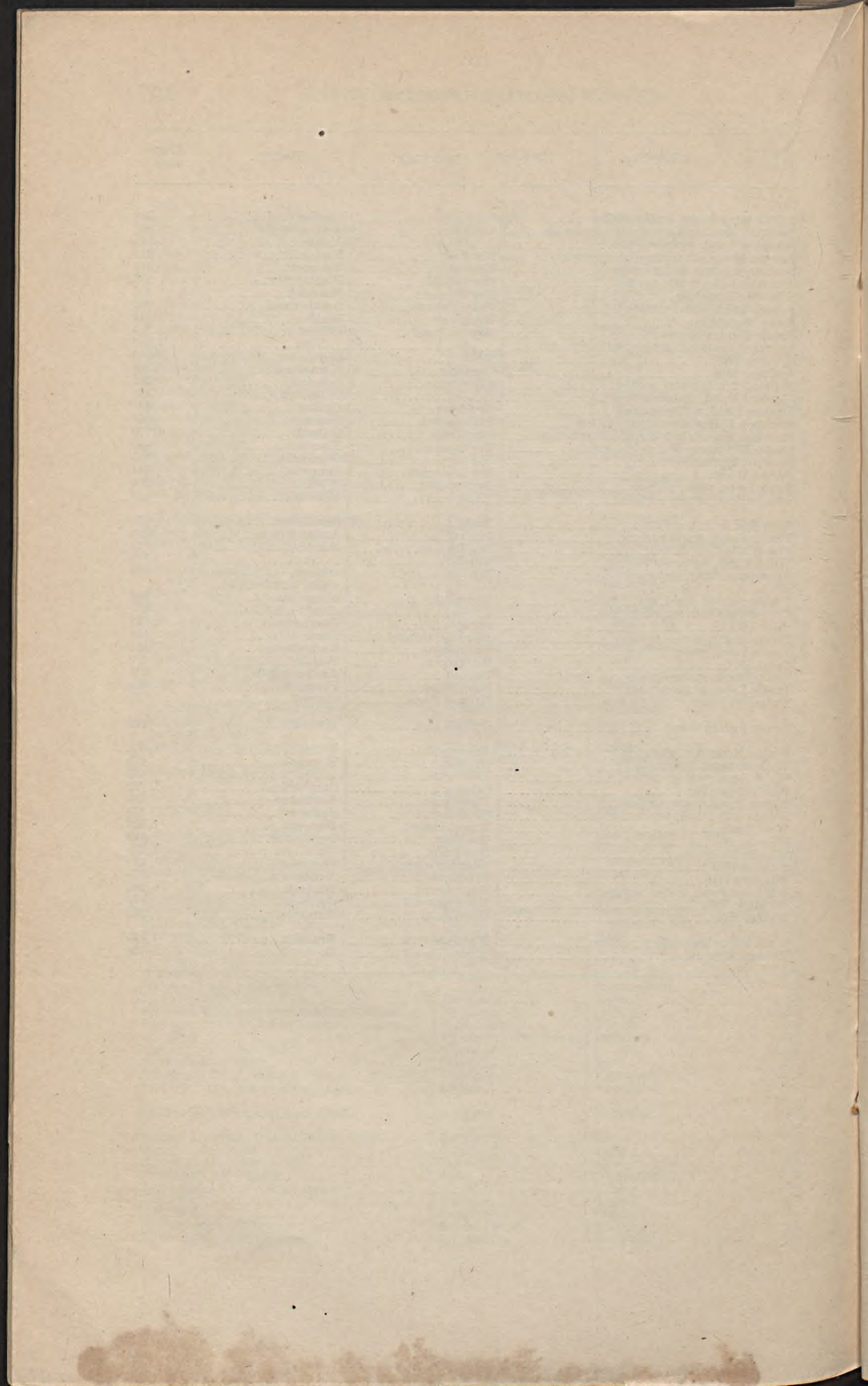
Secondary elevations from records and topographic maps of the United States Geological Survey, including altitudes of well-known summits, water-surface elevations of prominent lakes, and other useful elevations are given below. The figures are approximate only and should not be used for accurate work.

Locality.	Quadrangle.	County.	Elevation.
			<i>Fect.</i>
Abrams Pond, water surface.....	Ellsworth.....	Hancock.....	167
Adams Hill.....	Gray.....	Cumberland.....	593
Alamosook Lake, water surface.....	Orland.....	Hancock.....	20
Alford Lake, water surface.....	Rockland.....	Knox.....	269
Allen Pond, water surface.....	Lewiston.....	Androscoggin.....	342
Anasagunticook Lake, water surface.....	Buckfield.....	Oxford.....	403
Annabessacook Lake, water surface.....	Augusta.....	Kennebec.....	171
Anonymous Pond, water surface.....	Norway.....	Cumberland.....	294
Auburn Lake, water surface.....	Lewiston, Poland.....	Androscoggin.....	259
Austin Pond, water surface.....	Bingham.....	Somerset.....	1,185
Baker Pond, water surface.....do.....do.....	1,063
Bald Head.....	Newfield.....	York.....	1,017
Bald Mountain.....	Orland.....	Hancock.....	1,261
Bald Mountain triangulation station.....	The Forks.....	Somerset.....	2,630
Bald Mountain.....	Rockland.....	Knox.....	1,272
Bald Pate.....	Sebago.....	Cumberland.....	1,160
Barker Pond, water surface.....	Skowhegan.....	Somerset.....	378
Beach Ridge.....	Sebago.....	Cumberland.....	1,052
Bear Mountain triangulation station.....	Buckfield.....	Oxford.....	1,207
Bear Pond, water surface.....	Buckfield.....	Androscoggin, Oxford.....	373
Do.....	Norway.....do.....	375
Bear Mountain.....do.....do.....	1,065
Beaver Hill.....	Berwick.....	York.....	626
Beech Hill.....	Wiscasset.....	Kennebec.....	543
Beech Hill Pond, water surface.....	Ellsworth.....	Hancock.....	199
Beech Mountain.....	Mount Desert.....do.....	855
Bigelow Hill triangulation station.....	Waterville.....	Somerset.....	785
Big Hill.....	Orland.....	Hancock.....	1,090
Black Brook Pond, water surface.....	The Forks.....	Somerset.....	893
Blackstrap Hill.....	Gray.....	Cumberland.....	505
Blaisdell Hill.....	Orland.....	Hancock.....	560
Blinn Hill.....	Wiscasset.....	Lincoln.....	442
Bluehill triangulation station.....	Bluehill.....	Hancock.....	940
Bradbury Mountain.....	Freeport.....	Cumberland.....	484
Branch Lake, water surface.....	Orland.....	Hancock.....	236
Brandy Pond, water surface.....	Sebago.....	Cumberland.....	267
Brewer Pond, water surface.....	Orland.....	Penobscot, Hancock.....	107
Brown Hill.....	Gray.....	Cumberland.....	548
Browns Mountain.....	Mount Desert.....	Hancock.....	880
Bryant Pond, water surface.....	Bryant Pond.....	Oxford.....	694
Call Hill.....	Wiscasset.....	Lincoln.....	342
Cedar Mountain.....	Newfield.....	York.....	1,220
Chase Mountain.....	Orland.....	Hancock.....	820
Chase Pond, water surface.....	Bingham.....	Somerset.....	1,353
Chemo Pond, water surface.....	Orono.....	Penobscot.....	126
Chickawaukie Pond, water surface.....	Rockland.....	Knox.....	123
China Lake, water surface.....	Vassalboro.....	Kennebec.....	195
Cobb Hill triangulation station.....	Bucksport.....	Hancock.....	562
Cobosseecontee Pond, water surface.....	Augusta, Gardiner.....	Kennebec.....	168
Cochewagan Pond, water surface.....	Lewiston.....do.....	271
Clark Mountain.....do.....	Androscoggin.....	707
Craig Pond, water surface.....	Orland.....	Hancock.....	213
Crawford Lake, water surface.....	Rockland.....	Knox.....	110
Curtis Hill triangulation station.....	Bryant Pond.....	Oxford.....	1,475
Cushman Hill.....	Boothbay.....	Lincoln.....	221

Locality.	Quadrangle.	County.	Elevation.
			<i>Fect.</i>
Damariscotta Pond, water surface.....	Wiscasset.....	Lincoln.....	51
Davis Pond, water surface.....	Orono.....	Penobscot.....	200
Day Mountain.....	Bar Harbor.....	Hancock.....	610
Dennis Hill.....	Gardiner.....	Kennebec.....	447
Dimnick Mountain.....	Bingham.....	Somerset.....	1,876
Dodling Hill.....	Norridgewock.....	Kennebec.....	650
Dog Mountain.....	Mount Desert.....	Hancock.....	670
Douglas Hill.....	Sebago.....	Cumberland.....	1,407
Dry Mountain.....	Bar Harbor.....	Hancock.....	1,268
Dry Pond, water surface.....	Gray.....	Cumberland.....	305
Duck Pond, water surface.....	do.....	do.....	185
Dutton Hill.....	do.....	do.....	571
Dyer Hill.....	Wiscasset.....	Lincoln.....	430
Dyer Long Pond, water surface.....	do.....	do.....	128
Eagle Lake, water surface.....	Bar Harbor.....	Hancock.....	275
East Peak.....	Mount Desert.....	do.....	971
East Pond, water surface.....	Norridgewock.....	Kennebec.....	257
East Royce Mountain.....	Gorham.....	Oxford.....	3,125
Ellis Pond, water surface.....	Norridgewock.....	Kennebec.....	270
Emden Pond, water surface.....	Anson.....	Somerset.....	419
Ephraim Mountain triangulation station.....	Bucksport.....	Waldo.....	720
Eustis Mountain.....	do.....	do.....	545
Fish Pond, water surface.....	Rockland.....	Knox.....	355
Fitch Hill.....	Sebago.....	Cumberland.....	1,143
Fitz Mountain.....	Orland.....	Hancock.....	605
Flag Hill.....	do.....	do.....	952
Fletcher Mountain triangulation station.....	Bingham.....	Somerset.....	1,700
Floods Pond, water surface.....	Ellsworth.....	Hancock.....	298
Flying Moose Mountain.....	Orland.....	do.....	916
Flying Pond, water surface.....	Norridgewock.....	Kennebec.....	335
Fort Ridge.....	Newfield.....	York.....	1,124
Frost Hill.....	Norway.....	Oxford.....	970
Do.....	Dover.....	York.....	301
Gloucester Hill.....	Gray.....	Cumberland.....	493
Goose Pond, water surface.....	do.....	do.....	275
Do.....	Orland.....	Hancock.....	307
Goose Pond Mountain.....	Swan Island.....	do.....	240
Great Pond, water surface.....	Ellsworth.....	do.....	52
Do.....	Norridgewock.....	Kennebec.....	247
Great Pond Hill.....	Bar Harbor.....	Hancock.....	540
Great Mountain.....	Orland.....	do.....	1,037
Greeley Pond, water surface.....	Augusta.....	Kennebec.....	290
Green Hill.....	Norridgewock.....	Somerset.....	586
Green Lake, water surface.....	Orland.....	Hancock.....	156
Do.....	Ellsworth.....	do.....	156
Green Mountain (Mount Desert triangulation station).....	Bar Harbor.....	do.....	1,532
Haggett Hill.....	Boothbay.....	Lincoln.....	245
Halfmoon Pond, water surface.....	Bucksport.....	Waldo.....	328
Hancock Pond, water surface.....	Anson.....	Somerset.....	517
Hawk Mountain.....	Norway.....	Oxford.....	1,065
Hayden Lake, water surface.....	Anson.....	Somerset.....	330
Heagan Mountain.....	Bucksport.....	Waldo.....	560
Herman Hill.....	Bangor.....	Penobscot.....	364
Hermon Pond, water surface.....	do.....	do.....	122
Highland Lake, water surface.....	Norway.....	Cumberland.....	423
Do.....	Fryeburg.....	do.....	426
Hinkley Hill triangulation station.....	Bangor.....	Penobscot.....	490
Hobbs Pond, water surface.....	Rockland.....	Knox.....	356
Holbrook Pond, water surface.....	Orono.....	Penobscot.....	200
Holt Hill.....	Norway.....	Oxford.....	1,005
Hopkins Hill triangulation station.....	Ellsworth.....	Hancock.....	423
Horse Hill.....	Norway.....	Oxford.....	875
Hosack Mountain.....	Newfield.....	York.....	1,080
Howland Hill.....	Norridgewock.....	Kennebec.....	705
Hunt Hill.....	Wiscasset.....	Lincoln.....	351
Jewell Hill triangulation station.....	Skowhegan.....	Somerset.....	611
Jones Hill.....	Wiscasset.....	Kennebec.....	368
Jordan Mountain.....	Mount Desert.....	Hancock.....	1,180
Jordan Pond, water surface.....	do.....	do.....	195
Joy Ridge.....	Wiscasset.....	Kennebec.....	426
Katahdin Mountain, highest point in State yet determined.....		Piscataquis.....	5,273
Kenniston Hill.....	Boothbay.....	Lincoln.....	290
Keoka Lake, water surface.....	Norway.....	Oxford.....	492
Kezar Lake, water surface.....	Fryeburg.....	do.....	376
Kezar Pond, water surface.....	do.....	do.....	374
Kimball Pond, water surface.....	do.....	do.....	379

Locality.	Quadrangle.	County.	Elevation. <i>Fect.</i>
Lake George, water surface.....	Skowhegan.....	Somerset.....	228
Little Austin Pond, water surface.....	Bingham.....	do.....	1,213
Little Sebago Lake, water surface.....	Gray.....	Cumberland.....	285
Long Lake, water surface.....	Norway.....	do.....	267
Long Pond, water surface.....	Augusta.....	Kennebec.....	238
Do.....	Norway.....	Oxford.....	533
Do.....	Norridgewock.....	Kennebec.....	238
Do.....	Vassalboro.....	Kennebec, Lincoln.....	190
Lovewell Pond, water surface.....	Fryeburg.....	Oxford.....	358
Lower Patten Pond, water surface.....	Orland.....	Hancock.....	131
McCloud Mountain.....	Bucksport.....	do.....	334
McFarland Mountain.....	Mount Desert.....	do.....	761
Mack Mountain.....	Bucksport.....	Waldo.....	605
Mainstream Pond, water surface.....	Skowhegan.....	Somerset.....	314
Mann Mountain.....	Newfield.....	York.....	1,075
Maranacook Lake, water surface.....	Augusta.....	Kennebec.....	212
Mason Mountain.....	Orland.....	Hancock.....	601
Mead Mountain.....	do.....	do.....	675
Megunticook Lake, water surface.....	Rockland.....	Knox.....	139
Megunticook Mountain.....	do.....	do.....	1,380
Merrill Hill triangulation station.....	Lewiston.....	Androscoggin.....	674
Messalonskee Lake, water surface.....	Augusta, Norridgewock.....	Kennebec.....	232
Middle Range Pond, water surface.....	Poland.....	Androscoggin.....	305
Moody Mountain.....	Sebago.....	York.....	783
Moose Pond, water surface.....	Fryeburg.....	Cumberland, Oxford.....	418
Do.....	Skowhegan.....	Somerset.....	243
Mosquito Mountain.....	Bucksport.....	Waldo.....	545
Do.....	The Forks.....	Somerset.....	2,230
Mount Ararat.....	Bath.....	Sagadahoc.....	255
Mountain Pond, water surface.....	Orland.....	Hancock.....	264
Mount Henry.....	Norway.....	Cumberland.....	666
Mount Tirem.....	do.....	Oxford.....	1,047
Mount Tom.....	Norridgewock.....	Somerset.....	765
Moxie Pond, water surface.....	The Forks.....	do.....	962
Moxie triangulation station.....	Bingham.....	do.....	2,925
Mud Pond, water surface.....	Bangor.....	Penobscot.....	117
Nehumkeag Pond, water surface.....	Wiscasset.....	Kennebec.....	82
Nequasset Pond, water surface.....	Bath.....	Sagadahoc.....	15
Newport Mountain.....	Bar Harbor.....	Hancock.....	1,060
North Pond, water surface.....	Bryant Pond.....	Oxford.....	719
Do.....	Norridgewock.....	Kennebec, Somerset.....	250
Notched Pond, water surface.....	Gray.....	Cumberland.....	345
Oak Hill.....	Orland.....	Hancock.....	880
Ossipee Hill.....	Buxton.....	York.....	1,050
Panther Pond, water surface.....	Gray.....	Cumberland.....	277
Peak of Otter.....	Bar Harbor.....	Hancock.....	506
Peaked Hills.....	Sebago.....	Cumberland.....	1,107
Peaked Mountain (Saunders triangulation station).....	Orland.....	Hancock.....	1,104
Pennesseewassee Lake, water surface.....	Norway.....	Oxford.....	398
Philip Mountain.....	Norridgewock.....	Kennebec.....	750
Phillips Lake, water surface.....	Orland.....	Hancock.....	223
Picket Mountain.....	Newfield.....	York.....	854
Pigeon Hill.....	Eastport.....	Washington.....	202
Do.....	Petit Manan.....	do.....	307
Pike Hill.....	Norway.....	Oxford.....	870
Pleasant Lake, water surface.....	do.....	Cumberland.....	425
Pleasant Mountain.....	Rockland.....	Knox.....	1,064
Pleasant Mountain triangulation station.....	Fryeburg.....	Oxford.....	2,007
Pleasant Pond, water surface.....	Wiscasset.....	Lincoln.....	146
Do.....	Bingham, The Forks.....	Somerset.....	1,262
Pleasant Pond Mountain.....	The Forks.....	do.....	2,480
Province Mountain.....	Newfield.....	York.....	1,152
Purgatory Pond, water surface.....	Gardiner.....	Kennebec.....	172
Pushaw Lake, water surface.....	Bangor.....	Penobscot.....	117
Quaker Hill triangulation station.....	Augusta.....	Kennebec.....	598
Ragged Mountain triangulation station.....	Rockland.....	Knox.....	1,300
Randall Mountain.....	Newfield.....	York.....	1,105
Range Pond, water surface.....	Poland.....	Androscoggin.....	305
Rattlesnake Mountain.....	Gray.....	Cumberland.....	1,046
Rattlesnake Pond, water surface.....	do.....	do.....	277
Rices Hill.....	Norway.....	Oxford.....	1,320
Ring Hill.....	Gardiner.....	Kennebec.....	400
Robinson Mountain.....	Mount Desert.....	Hancock.....	680
Rowe Pond, water surface.....	Bingham.....	Somerset.....	1,206

Locality.	Quadrangle.	County.	Elevation. <i>Fect.</i>
Sabbathday Pond, water surface	Gray	Cumberland	298
Sabattus Mountain triangulation station	Lewiston	Androscooggin	802
Sabattus Pond, water surface	do	do	243
Sawyer Mountain triangulation station	Newfield	York	1,210
Scammon Pond, water surface	Ellsworth	Hancock	146
Schoodic Lake, water surface	Cherryfield	Washington	223
Schoodic Mountain	Bar Harbor	Hancock	437
Sebago Lake, water surface	Gray, Sebago	Cumberland	262
Snow Mountain	Bucksport	Waldo	742
South Pond, water surface	Bryant Pond	Oxford	719
Speckled Mountain triangulation station	do	do	2,207
Sprague Hill	Bath	Sagadahoc	200
Springer Hill	Gardiner	Kennebec	555
Stafford Pond, water surface	Skowhegan	Somerset	262
Starbird Pond, water surface	do	do	426
Stearns Pond, water surface	Fryeburg	Oxford	444
Stickney Hill triangulation station	Skowhegan	Somerset	968
Streaked Mountain triangulation station	Buckfield	Oxford	1,770
Stubb Hill triangulation station	Bucksport	Hancock	480
Summit Spring Hill	Norway	Cumberland	883
Sunset Rock	Norridgewock	Somerset	364
Swan Lake, water surface	Bucksport	Waldo	200
Sweets Pond, water surface	do	Hancock	188
Tate Hill	Bath	Sagadahoc	375
Taylor Pond, water surface	Poland	Androscooggin	239
The White Cap	Bar Harbor	Hancock	925
Third Pond, water surface	Bluehill	do	142
Thompson Lake, water surface	Poland	Oxford, Androscooggin, Cumberland	325
Threecornered Pond, water surface	Vassalboro	Kennebec	185
Threemile Pond, water surface	do	do	177
Tiger Hill	Sebago	Cumberland	723
Toddy Pond, water surface	Bluehill, Orland	Hancock	158
Togus Pond, water surface	Vassalboro	Kennebec	185
Treat Hill	Bucksport	Waldo	370
Tripp Pond, water surface	Poland	Androscooggin	306
Turtle Lake, water surface	Bar Harbor	Hancock	325
Twitchell Pond, water surface	Bryant Pond	Oxford	763
Upper Patten Pond	Orland	Hancock	162
Waldo Mountain triangulation station	Bucksport	Waldo	1,062
Wallamatogus Mountain	Bluehill	Hancock	470
Webb Pond, water surface	Ellsworth	do	133
Webb Rowe Hill	Sebago	Cumberland	1,372
Weber Pond, water surface	Vassalboro	Kennebec	135
Wentworth Pond, water surface	Skowhegan	Somerset	579
West Peak	Mount Desert	Hancock	1,073
Wheeler Hill	Gardiner	Sagadahoc	313
Wiggin Mountain	Newfield	York	1,275
Willard Hill	Norridgewock	Somerset	510
Williams Hill	Wiscasset	Kennebec	358
Williams Pond, water surface	Bucksport	Hancock	263
Winding Hill	Norridgewock	Somerset	410
Winter Hill	Vassalboro	Kennebec	390
York Hill triangulation station	Norridgewock	Franklin	1,190
Youngs Mountain	Mount Desert	Hancock	706



INDEX.

	Page.		Page.
A.			
Abol Falls.....	51	Berwick quadrangle.....	54
Abol Stream.....	51	Bethel.....	23
Abrams Pond.....	54	Bethel quadrangle.....	25, 48
Adams, Robert, leveling by.....	47	Big Eddy.....	51
Adams Hill.....	54	Bigelow Hill triangulation station.....	54
Alamoosook Lake.....	54	Big Hill.....	54
Albany.....	24	Bingham.....	17
Alexander, C. K., leveling by.....	23, 36	Bingham quadrangle.....	17, 54, 55, 56
Alford Lake.....	54	Black Brook Pond.....	54
Allagash Lake.....	53	Blackstrap Hill.....	54
Allagash Stream.....	53	Blaisdell Hill.....	54
Allen Pond.....	54	Blinn Hill.....	54
Ambajejus Falls.....	52	Bluehill.....	39
Ambejemackomus Falls.....	51	Bluehill quadrangle.....	39, 54, 57
Anasagunticook, Lake.....	21, 54	Bluehill triangulation station.....	54
Androscoggin County.....	18, 46, 54, 56, 57	Boardman, H. S., leveling by.....	47, 49
Androscoggin River.....	48	Boothbay quadrangle.....	54, 55
Annabessacook Lake.....	54	Boston & Maine R. R.....	10
Anonymous Pond.....	54	Bowdoinham.....	47
Anson.....	14	Bowlin Falls.....	53
Anson quadrangle.....	14, 55	Boyd Lake quadrangle.....	41
Appleton.....	28, 31	Bradbury Mountain.....	54
Argyle.....	42-43	Branch Lake.....	54
Artists Bridge.....	24	Brandy Pond.....	54
Askwith.....	50	Brassua Lake.....	50
Athens.....	15, 16	Brassua Lake quadrangle.....	18, 50
Auburn.....	20	Brett, G. M., leveling by.....	49
Auburn Lake.....	54	Brewer Pond.....	54
Augusta.....	13, 47	Bridgton Junction.....	26
Augusta quadrangle.....	13, 47, 54, 55, 56	Briggs Ferry.....	17
Austin Pond.....	17, 54	Brooks.....	30
B.			
Babbett & Googin dam.....	47	Brooks quadrangle.....	30
Baker Pond.....	54	Brownfield.....	26
Bald Head.....	54	Brownfield station.....	26
Bald Mountain.....	54	Brown Hill.....	54
Bald Mountain triangulation station.....	54	Brown School.....	16
Bald Pate.....	54	Browns Mountain.....	54
Bangor.....	36	Brunswick.....	9, 47
Bangor & Aroostook R. R.....	41	Bryant Pond.....	25, 26, 54
Bangor quadrangle.....	36-37, 55, 56	Bryant Pond quadrangle.....	25-26, 48, 54, 56, 57
Bar Harbor quadrangle.....	55, 56, 57	Buckfield.....	21, 22
Barker Pond.....	54	Buckfield quadrangle.....	21-22, 48, 54, 57
Bath quadrangle.....	9, 47, 56, 57	Bucksport.....	36
Beach Ridge.....	54	Bucksport Center.....	36
Bear Mountain triangulation station.....	54	Bucksport quadrangle.....	36, 54, 55, 56, 57
Beaver Hill.....	54	Burnham quadrangle.....	31
Beech Hill.....	54	Buxton quadrangle.....	56
Beech Hill Pond.....	54	C.	
Beech Mountain.....	54	Call Hill.....	54
Belfast.....	28-30, 35	Canaan.....	16
Belfast quadrangle.....	28-30	Canton.....	21, 22
Bench marks, character of.....	6	Carritunk.....	17
Bench marks, view of.....	6	Cass Corner.....	15
Bennetts Ridge.....	25	Castine quadrangle.....	35
		Cedar Mountain.....	54
		Center Appleton.....	29

	Page.		Page.
Center Belmont School.....	29	Dutton Hill.....	55
Center Lovell.....	27	Dyer Hill.....	55
Chase Mountain.....	54	Dyer Long Pond.....	55
Chase Pond.....	54		
Chemo Pond.....	54	E.	
Cherryfield.....	45	Eagle Lake.....	55
Cherryfield quadrangle.....	44, 57	Eastbrook Corners.....	37
Chesuncook.....	49	East Brownfield.....	26
Chesuncook dam.....	51	East Bucksport.....	39
Chesuncook Lake.....	51	East Eddington.....	38
Chesuncook quadrangle.....	49, 52	East Fryeburg.....	27
Chickawaukie Pond.....	54	East Hebron.....	20
China.....	33	East Northport.....	35
China Lake.....	54	East Orland.....	38
China station.....	33	East Palermo.....	32
Chisholm.....	48	East Peak.....	55
Churchill Lake quadrangle.....	53	East Peru.....	48
City Point.....	30	East Pond.....	55
Clark Mountain.....	54	Eastport.....	46
Classification, standard of.....	5-6	Eastport quadrangle.....	45-46, 56
Clifton.....	38	East Royce Mountain.....	55
Cobb Hill triangulation station.....	54	East Stoneham.....	27
Cobboscontee Pond.....	54	East Summer.....	21, 22
Cochnewagan Pond.....	54	East Sweden.....	27
Coe, Robert, leveling by.....	36	Edgerly, J. W., leveling by.....	36
Cornish.....	10	Elevations, secondary.....	54-57
Cornish station.....	26	Ellis Pond.....	55
Corston Corner.....	15, 17	Ellsworth.....	37
Costigan.....	40, 43	Ellsworth Falls.....	37, 38
Craig Pond.....	54	Ellsworth quadrangle.....	37-38, 54, 55, 57
Crawford Lake.....	54	Elmwood Farm station.....	20
Crowleys.....	19	Embden Center.....	14
Cumberland County.....	8, 10, 18, 23, 46, 54, 55, 56, 57	Embden Pond.....	55
Cumberland Junction.....	9	Enfield.....	40, 42-44
Cumberland Mills.....	9, 12	Ephraim Mountain.....	55
Curtis Hill triangulation station.....	54	Epping.....	45
Cushman Hill.....	54	Eustis Mountain.....	55
Cutler.....	46		
Cutler quadrangle.....	46	F.	
		Farmington.....	48
D.		Fayette.....	23
Damariscotta Lake.....	34, 55	Fayette Village.....	23
Datum, nature of.....	6-7	Fish Pond.....	55
Davis Pond.....	55	Fitch Hill.....	55
Day Mountain.....	55	Fitz Mountain.....	55
Dead River station.....	22	Flag Hill.....	55
Deadwater station.....	17	Fletcher Mountain triangulation station.....	55
Debsconeag Falls.....	51-52	Floods Pond.....	55
Dedham.....	38	Flying Moose Mountain.....	55
Deering Junction.....	8	Flying Pond.....	55
Dennis Hill.....	55	Fort Ridge.....	55
Dennysville.....	46	Foxhole Rips.....	49
Dickvale.....	21	Franklin.....	37
Dimmick Mountain.....	55	Franklin County.....	18, 46, 57
Dingley farm.....	47	Freedom.....	33
Dixfield.....	21	Freeport.....	9
Dixfield quadrangle.....	48	Freeport quadrangle.....	9, 47, 54
Dodling Hill.....	55	Frost Hill.....	55
Dog Mountain.....	55	Fryeburg.....	26, 27
Douglas Hill.....	55	Fryeburg Center.....	27
Dover quadrangle.....	55	Fryeburg quadrangle.....	27, 55, 56, 57
Dry Mountain.....	55		
Dry Pond.....	55	G.	
Duck Pond.....	55	Gardiner.....	47
Ducktrap.....	29	Gardiner quadrangle.....	47, 54, 55, 56, 57
Dunstan.....	11	Garfield School.....	16, 17

Page.		Page.
21, 48	Gilbertville.....	37
25, 48	Gilead.....	55
45	Gilman, H. M., leveling by.....	53
34	Glendon station.....	17
55	Gloucester Hill.....	
13	Goodwill.....	
13	Goodwill Farm.....	
55	Goose Pond.....	
55	Goose Pond Mountain.....	
11-12	Gorham.....	
55	Gorham quadrangle.....	
53	Grand Lake.....	
20, 25-26	Grand Trunk Ry.....	
9, 54, 55, 56, 57	Gray quadrangle.....	
55	Great Mountain.....	
55	Great Pond.....	
55	Great Pond Hill.....	
55	Greeley Pond.....	
40	Greenbush.....	
40	Greenbush station.....	
19	Greene.....	
55	Green Hill.....	
55	Green Lake.....	
55	Green Mountain.....	
53	Grindstone.....	
49	Grover, A. L., leveling by.....	
	H.	
55	Haggett Hill.....	
55	Halfmoon Pond.....	
13, 47	Hallowell.....	
35, 54, 55, 56, 57	Hancock County.....	
55	Hancock Pond.....	
27	Harbor.....	
16-17	Harmony.....	
45	Harrington.....	
51	Harrington Lake quadrangle.....	
21	Hartford.....	
21	Hartford station.....	
19	Hartman, Charles.....	
38	Harts Corners.....	
25	Hastings.....	
36, 44	Havens, A. S., leveling by.....	
55	Hawk Mountain.....	
55	Hayden Lake.....	
55	Heagan Mountain.....	
11	Heath Church.....	
20	Hebron.....	
55	Herman Hill.....	
55	Herman Pond.....	
55	Highland Lake.....	
23	Hillegass, E. B., leveling by.....	
13	Hinckley.....	
55	Hinckley Hill triangulation station.....	
26	Hiram.....	
55	Hobbs Pond.....	
55	Holbrook Pond.....	
55	Holt Hill.....	
29	Hope.....	
55	Hopkins Hill triangulation station.....	
55	Horse Hill.....	
51	Horse Race.....	
55	Hosac Mountain.....	
41, 42	Howland.....	
55	Howland Hill.....	
37	Hudson.....	
55	Hunt Hill.....	
53	Hunt Island.....	
17	Hurd School.....	
	I.	
53	Indian Pitch.....	
18	Indian Pond.....	
	J.	
51	Jackman.....	
48	Jay Bridge.....	
34	Jefferson.....	
55	Jewell Hill triangulation station.....	
55	Jones Hill.....	
55	Jordan Mountain.....	
55	Jordan Pond.....	
55	Joy Ridge.....	
	K.	
55	Katahdin Mountain.....	
51	Katahdin Stream.....	
22, 48	Keens Mills Cemetery.....	
37	Kenduskeag.....	
12, 18, 28, 46, 55, 56, 57	Kennebec County.....	
55	Kenniston Hill.....	
55	Keoka Lake.....	
25	Ketchum.....	
10	Kezar Falls.....	
10, 26	Kezar Falls quadrangle.....	
55	Kezar Lake.....	
55	Kezar Pond.....	
19	Kilby, H. P., leveling by.....	
55	Kimball Pond.....	
32	Kingdon.....	
17	Kingsbury quadrangle.....	
17	Klondike School.....	
30	Knox Center.....	
28, 54, 55	Knox County.....	
30	Knox station.....	
	L.	
41-42	La Grange.....	
56	Lake George.....	
37	Lakewood.....	
53	Ledge Falls.....	
19	Leeds.....	
22	Leeds Center.....	
19	Leeds Junction.....	
37	Levant.....	
8-10	Leveling, precise.....	
10-53	Leveling, primary.....	
19, 47	Lewiston.....	
20	Lewiston Junction.....	
19-20, 47, 54, 56, 57	Lewiston quadrangle.....	
31-32	Liberty.....	
31-33	Liberty quadrangle.....	
40	Lincoln.....	
40	Lincoln Center.....	
28, 54, 55, 56	Lincoln County.....	
16	Lincoln School.....	
28	Lincolnvile.....	
29	Lincolnvile Beach.....	
29	Lincolnvile Center.....	
19	Lisbon.....	
19, 47	Lisbon Falls.....	

	Page.		Page.
Little Austin Pond.....	56	Mount Tirem.....	56
Little Sebago Lake.....	56	Mount Tom.....	56
Livermore Falls.....	23, 48	Moxie Pond.....	18, 56
Livermore quadrangle.....	22-23, 48	Moxie triangulation station.....	56
Lobster Stream.....	50	Mud Pond.....	52
Locke Mills.....	26	Mud Pond Brook.....	52
Long Pond.....	50, 56		
Long Pond quadrangle.....	50-51	N.	
Long Pond station.....	50	Nehumkeag Pond.....	56
Lovell.....	27	Nequasset Pond.....	56
Lovewell Pond.....	56	Newfield quadrangle.....	54, 55, 56, 57
Lowell.....	43, 44	Newhall.....	9
Lower Patten Pond.....	56	Newport Mountain.....	56
Lubec.....	45	Newry Corner.....	48
Lynchville.....	24, 27	Nicolin.....	39
M.		Norcross, T. W., leveling by.....	47
McCloud Mountain.....	56	Norcross Cove.....	52
McFarland Mountain.....	56	Norcross quadrangle.....	52
MacKamp.....	50	Norridgewock.....	14
Mack Mountain.....	56	Norridgewock quadrangle.....	14, 55, 56, 57
McMaugh, F. J., leveling by.....	12, 28, 36, 39	North Anson.....	14
Madison.....	14	North Appleton.....	28-29
Madison Center.....	14	North Bethel.....	24
Maine, cooperation of.....	5	North Bluehill.....	39
spirit leveling in, publication on.....	5	Northeast Carry.....	50
Maine Central R. R.....	8-10, 13, 19-22, 26, 30, 33-34, 36-38, 40, 47-48	Northeast Carry quadrangle.....	50
Mainstream Pond.....	56	North Fryeburg.....	27
Mann Mountain.....	56	North Lincoln.....	40
Maps, topographic, list of.....	7	North Madison.....	14
Maranacook Lake.....	56	North Newburg.....	37
Marrs Camp.....	18	North Pond.....	56
Mason Mountain.....	56	Northport.....	28, 35, 36
Matagamon quadrangle.....	53	North Searsport.....	36
Mattawamkeag.....	41	North Twin Lake.....	52
Mattawamkeag quadrangle.....	41	North Waterford.....	27
Mattocks.....	10	Norway quadrangle.....	26, 54, 55, 56, 57
Maxey, K. F., leveling by.....	23	Notched Pond.....	56
Mead Mountain.....	56		
Meadow Brook Bridge.....	24-25	O.	
Meadowview.....	48	Oak Hill.....	56
Mechanic Falls.....	20	Oakhill station.....	10
Medway.....	41, 53	Olamon.....	40, 43
Megunticook Lake.....	56	Oldtown.....	38
Megunticook Mountain.....	56	Orland quadrangle.....	38-39, 54, 55, 56, 57
Merrill Hill triangulation station.....	56	Orono.....	38
Messalonskee Lake.....	56	Orono quadrangle.....	38, 54, 55
Middle Range Pond.....	56	Ossipee Hill.....	56
Milford.....	38	Oxford.....	20
Millbridge.....	44	Oxford County.....	8, 18, 23, 46, 54, 56, 57
Millinocket.....	41		
Millinocket quadrangle.....	53	P.	
Moody Mountain.....	56	Packwackamus Falls.....	51
Moosehead.....	18, 50	Palermo.....	32, 33
Moosehead Lake.....	18	Palermo Center.....	33
Moosehead quadrangle.....	18, 50	Palermo station.....	33
Moosehorn Stream.....	50	Panther Pond.....	56
Moose Pond.....	56	Passadumkeag.....	40
Mosquito Mountain.....	56	Passadumkeag quadrangle.....	40, 42-43
Mountain Pond.....	56	Passadumkeag River.....	44
Mount Ararat.....	56	Passamagormuc Falls.....	52
Mount Desert quadrangle.....	39, 54, 55, 56, 57	Peaked Mountain.....	56
Mount Desert triangulation station.....	55	Peak of Otter.....	56
Mount Henry.....	56	Pejepscot.....	47
Mount Katahdin quadrangle.....	51-52	Pembroke.....	46
		Pennesseewassee Lake.....	56
		Penobscot County.....	35, 39, 41, 49, 55, 56

	Page.		Page.
Perkins, J. M., leveling by	28	Schlachter, K. E., leveling by	12, 23, 28
Petit Manan quadrangle	56	Schoodic Lake	57
Philip Mountain	56	Schoodic Mountain	57
Phillips Lake	56	Sea level, mean, definition of	6
Picket Mountain	56	Searsmont	29
Pigeon Hill	56	Sebago	9
Pike Hill	56	Sebago Lake	54
Piscataquis County	12, 49, 55	Sebago Lake station	9
Pitcher School	29	Sebago quadrangle	9-10, 54, 55, 56, 57
Pleasant Lake	56	Seboels quadrangle	40
Pleasant Mountain	56	Second Lake	53
Pleasant Mountain triangulation station	56	Seitz, R. C., leveling by	10
Pleasant Pond	56	Shawmut	13
Pleasant Pond Mountain	56	Shins Ponds quadrangle	53
Poland	20	Sibley Corner	31
Poland quadrangle	20, 54, 56, 57	Skowhegan	14-16
Poland Spring station	20	Skowhegan & Norridgewock Electric Ry	14
Porter	10, 26	Skowhegan quadrangle	14-17, 54, 55, 56, 57
Portland	8, 9, 10	Snow Corner	37
Portland quadrangle	8-9, 10-12	Snow Falls	25
Precise levelling	8-10	Snow Mountain	57
Primary leveling	10-53	Soldiers Brook	53
Prospect	36	Solon	14
Province Mountain	56	Somerset County	12, 49, 54, 55, 56
Purgatory Pond	56	Somerset Ry	14
Pushaw Lake	56	Somerville	32
Q.			
Quaker Hill triangulation station	56	Songo Pond	23-24
R.			
Ragged Mountain triangulation station	56	Sourdnahunk dam	51
Randall Mountain	56	Sourdnahunk Deadwater	51
Rands School	26	South Albion	31, 33
Range Pond	56	South Buxton	11
Rattlesnake Mountain	56	South Corinth	37
Rattlesnake Pond	56	South La Grange	42
Revere School	15	South Lincoln	40
Rices Hill	56	South Montville	28, 29, 31
Richmond	47	South Orrington	36
Richville	9-10	South Paris	20, 25, 26
Rileys	48	South Pond	26, 33, 57
Ring Hill	56	South Somerville	31, 34
Ripogenus Lake	51	South Union	34
Robinson Mountain	56	South Windham station	9
Rockland	35	Speckled Mountain triangulation station	57
Rockland quadrangle	35, 54, 55, 56	Sprague Hill	57
Rowe Pond	56	Springer Hill	57
Rumford Center	48	Staceyville quadrangle	53
Rumford Falls	48	Stafford Pond	57
Rumford Junction	20	Stair Falls	53
Rumford Point	48	Starbird Pond	57
S.			
Sabattus	19	Stearns Pond	57
Sabattus Mountain	57	Steep Falls	10
Sabattus Pond	57	Steuben	45
Sabbathday Pond	57	Stickney Corners	31
Saco station	11	Stickney Hill triangulation station	57
Sagadahoc County	18, 46, 56, 57	Streaked Mountain triangulation station	57
St. George Lake	32	Strickland	48
Sandhill Corner	32	Stubb Hill triangulation station	57
Sawyer Mountain triangulation station	57	Summit Spring Rock	57
Scammon Pond	57	Summer	22
		Sunset Rock	57
		Suponic quadrangle	44
		Surry	39
		Swan Island quadrangle	55
		Swan Lake	57
		Swanville	28, 36
		Sweden Corner	27
		Sweets Pond	57

T.	Page.	Page.	
Tate Hill.....	57	Waterville quadrangle.....	13, 54
Taylor Pond.....	57	Wayne.....	22-23
Telos dam.....	52	Webb Pond.....	57
Telos Lake quadrangle.....	52	Webb Rowe Hill.....	57
The Forks.....	18	Weber Pond.....	57
The Forks quadrangle.....	18, 54, 56	Webster Brook.....	52
The White Cap.....	57	Webster Lake.....	52
Third Pond.....	57	Wells, C. S., leveling by.....	41
Thomaston.....	35	Wentworth Pond.....	57
Thompson Lake.....	20, 57	West Appleton.....	28
Threecornered Lake.....	57	West Baldwin.....	26
Threemile Pond.....	57	West Bethel.....	24, 48
Tiger Hill.....	57	West Bridgton.....	27
Tilden.....	37	Westbrook station.....	12
Toddy Pond.....	57	West Ellsworth.....	38
Togus Pond.....	57	West Enfield.....	42
Topographic maps, list of.....	7	West Jefferson.....	34
Topsham.....	47	West Lubeck.....	45, 46
Treat Hill.....	57	West Minot.....	20
Tripp Pond.....	20, 57	West Montville.....	32-33
Turner.....	21	West Oldtown.....	37
Turtle Lake.....	57	West Paris.....	25
Twin Lake dam.....	41	West Peak.....	57
Twitchell Pond.....	57	West Pembroke.....	46
U.		West Peru.....	21
Umbazooksus Lake.....	52	West Poland.....	20
Umbazooksus Stream.....	52	West Rockport.....	35
Union.....	34	West Scarborough station.....	10-11
Union Common.....	34	West Washington.....	31, 32
United States Coast and Geodetic Survey, elevations from.....	8, 10, 13	West Winterport.....	36
United States Engineer Corps, elevation from.....	8, 45	Wheeler Hill.....	57
United States fish hatchery.....	53	Whetstone Falls.....	53
Upper Patten Pond.....	57	Whiting.....	45
V.		Wiggin Mountain.....	57
Vassalboro.....	13	Wilkins Corner.....	29
Vassalboro quadrangle.....	13, 54, 56, 57	Willard Hill.....	57
W.		Williams Hill.....	57
Waldo.....	30	Williams Pond.....	57
Waldoboro quadrangle.....	33-35	Winding Hill.....	57
Waldoboro station.....	33-34	Winn.....	40
Waldo County.....	28, 35, 55, 57	Winn quadrangle.....	40
Waldo Mountain triangulation station.....	57	Winslow.....	13
Wales.....	19	Winslows Mills.....	34
Wallamatogus Mountain.....	57	Winter Hill.....	57
Waltham.....	37, 38	Wiscasset quadrangle.....	54, 55, 56, 57
Warren.....	33, 35	Wiscasset, Waterville & Farmington R. R.....	32-33
Warren station.....	33, 35	Woodfords.....	8
Washington.....	32	Y.	
Washington County.....	44, 45, 56, 57	Yarmouth.....	9
Washington Junction.....	37	Yarmouth Junction.....	9
Waterville.....	13	York County.....	10, 23, 54, 57
		York triangulation station.....	57
		Youngs Mountain.....	57



