

DEPARTMENT OF THE INTERIOR

FRANKLIN K. LANE, Secretary

UNITED STATES GEOLOGICAL SURVEY

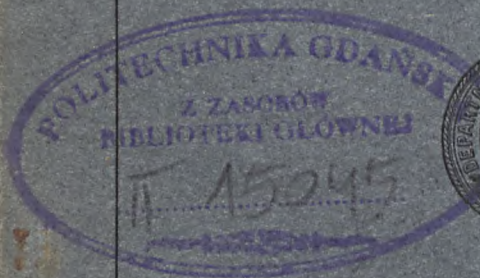
GEORGE OTIS SMITH, Director

BULLETIN 635

SPIRIT LEVELING IN GEORGIA

1896 TO 1914, INCLUSIVE

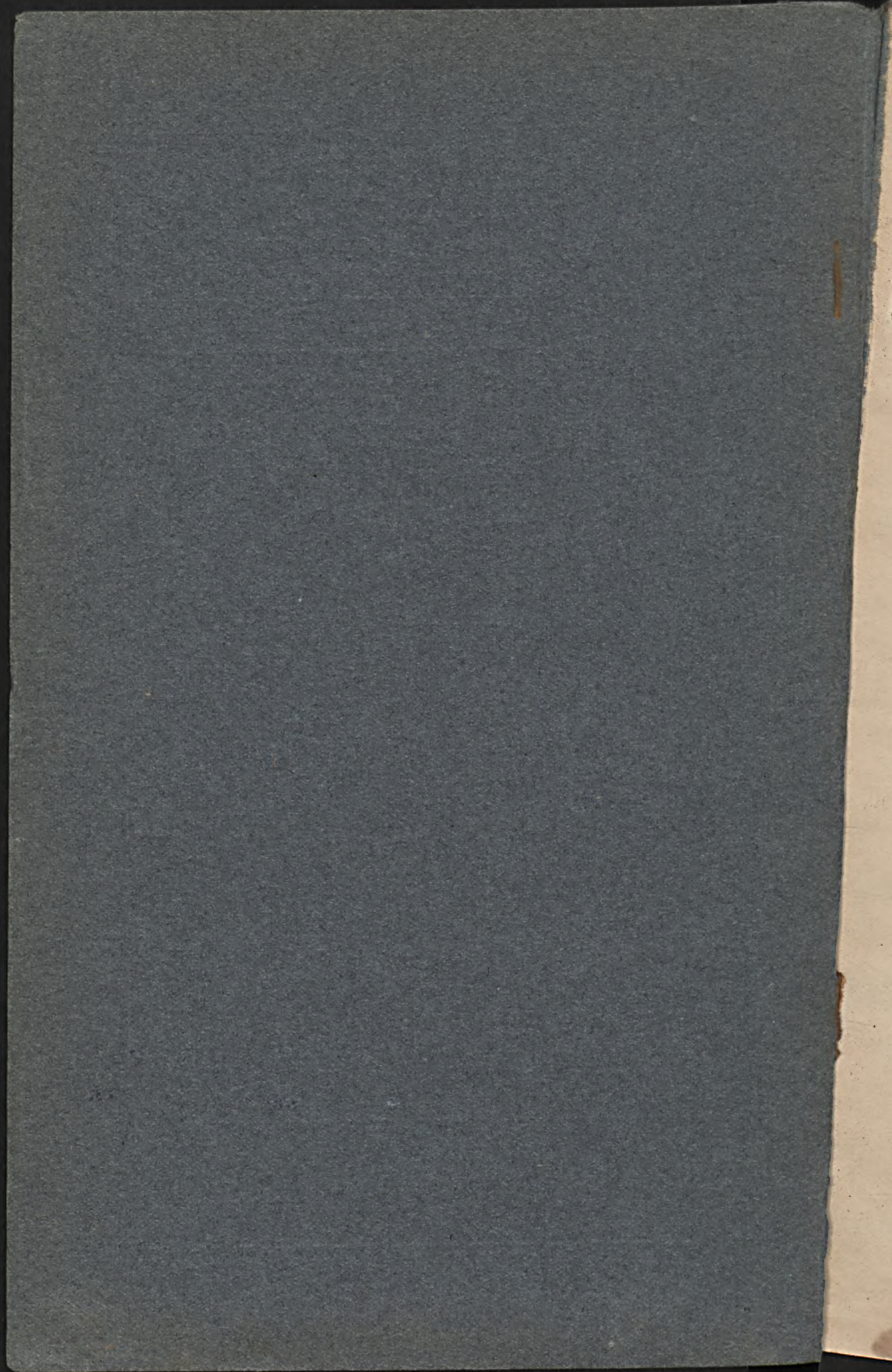
R. B. MARSHALL, CHIEF GEOGRAPHER



WASHINGTON

GOVERNMENT PRINTING OFFICE

1916



DEPARTMENT OF THE INTERIOR  
FRANKLIN K. LANE, Secretary

UNITED STATES GEOLOGICAL SURVEY  
GEORGE OTIS SMITH, Director

Bulletin 635

# SPIRIT LEVELING IN GEORGIA

1896 TO 1914, INCLUSIVE

R. B. MARSHALL, CHIEF GEOGRAPHER



Wpisano do inwentarza  
ZAKŁADU GEOLOGII

Dział B Nr. 228

Dnia XII 1917

*Bibl. Kat. Markiewicz  
Dep. Nr. 8.*

WASHINGTON  
GOVERNMENT PRINTING OFFICE  
1916

0



## CONTENTS.

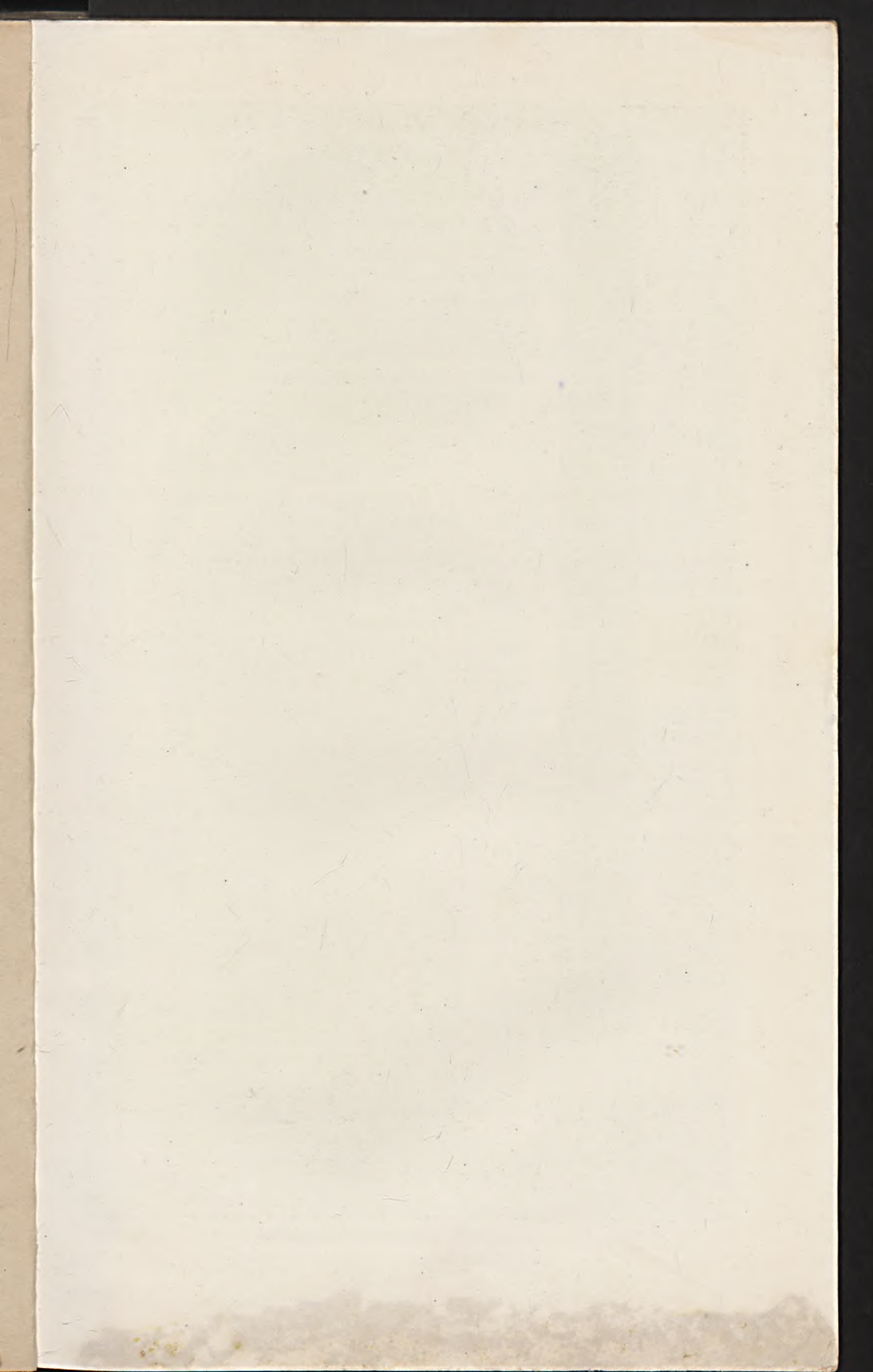


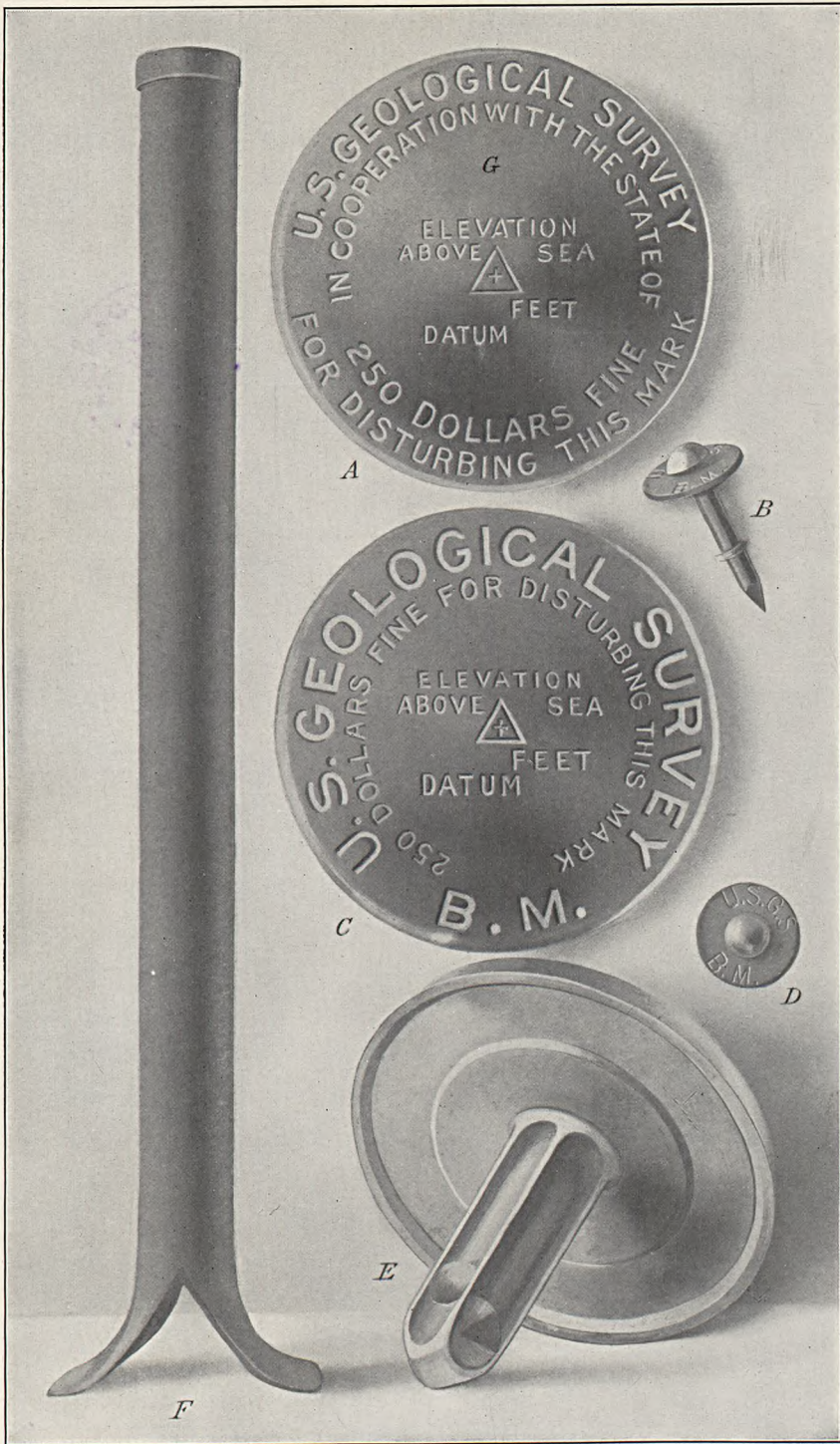
	Page.
Introduction.....	5
Previous publication.....	5
Personnel.....	5
Classification.....	5
Bench marks.....	6
Datum.....	6
Topographic maps.....	7
Precise leveling.....	7
Atlanta, Baxley, Brunswick, Cochran, Dalton, Eastman, Everett, Forsyth, Gresston, Jackson, Jesup, Lumber City, McDonough, McRae, Macon, Marietta, Ringgold, Rome, Scotland, Surrency, and Tobesofkee quadrangles (Appling, Bibb, Butts, Clayton, Cobb, Coffee, Dodge, Floyd, Fulton, Glynn, Gordon, Henry, Monroe, Paulding, Polk, Pulaski, Telfair, Twiggs, Wayne, and Whitfield counties).....	7
Ringgold quadrangle (Dade County).....	14
Macon and Meriwether quadrangles (Baldwin, Bibb, and Jones counties).....	15
Primary leveling.....	16
Dahlonega, Dalton, and Ellijay quadrangles (Fannin, Gilmer, Habersham, Lumpkin, Murray, Rabun, Towns, Union, White, and Whitfield counties).....	16
Cartecay, Cohutta, Enoch, Spring Place, Talking Rock, and Waleska quadrangles (Gilmer, Gordon, Murray, and Pickens counties).....	19
Acworth, Adairsville, Stilesboro, and Waleska quadrangles (Bartow, Cherokee, Cobb, Gordon, Paulding, and Pickens counties).....	27
Rome and Wedowee quadrangles (Carroll, Chattooga, Floyd, Heard, Polk, and Troup counties).....	30
Columbus, Fayetteville, Fort Valley, Macon, McDonough, Opelika, Pashchal, Reynolds, Talbotton, Tobesofkee, and Zebulon quadrangles (Bibb, Chattahoochee, Crawford, Harris, Henry, Houston, Meriwether, Muscogee, Pike, Spalding, Taylor, Talbot, and Troup counties).....	32
Crawfordville, Eatonton, Greensboro, Jackson, Machen, Madison, Meriwether, Milledgeville, and Shoulder quadrangles (Baldwin, Butts, Greene, Jasper, Lincoln, McDuffie, Morgan, Oglethorpe, Taliaferro, Warren, and Wilkes counties).....	39
Georgia-South Carolina primary leveling.....	50
Carnesville, Crawfordville, Elberton, and Walhalla quadrangles (Elbert Franklin, Habersham, and Hart counties, Ga.; Abbeville, Anderson, and Oconee counties, S. C.).....	50
Appendix.....	52
Index.....	55

## ILLUSTRATION.

	Page.
PLATE I. Geological Survey bench marks.....	5







GEOLOGICAL SURVEY BENCH MARKS.

A, Tablet used in cooperating States. The State name is inserted at G.  
 B and D, Copper temporary bench mark, consisting of a nail and copper washer.  
 A, C, and E, Tablets for stone or concrete structures.  
 F, Iron post used where there is no rock.



# SPIRIT LEVELING IN GEORGIA, 1896 TO 1914 INCLUSIVE.

R. B. MARSHALL, Chief Geographer.

## INTRODUCTION.

*Previous publication.*—That portion of the results of spirit leveling in Georgia previously published as part of Bulletin 441, containing descriptions and elevations of bench marks established in Georgia from 1896 to 1909, inclusive, and based on the 1903 adjustment, has been corrected to agree with the 1907 adjustment of precise leveling of the United States Coast and Geodetic Survey, and is here republished, together with the results of spirit leveling by the United States Geological Survey in Georgia since 1909. The elevations by the 1907 adjustment were not changed by the 1912 adjustment and are not likely to be changed by any future adjustment of the level net.

*Personnel.*—The field work from 1896 to 1906, inclusive, was done under the direction of H. M. Wilson, geographer, and that from 1907 to 1914, inclusive, was done under Frank Sutton, geographer. The work since January, 1908, was done under the general direction of R. B. Marshall, chief geographer. Credit is given in the headings of the several lists to the respective levelmen. The office work of computation, adjustment, and preparation of lists was done mainly by S. S. Gannett, geographer, under the general direction of E. M. Douglas, geographer.

*Classification.*—The elevations are classified as precise or primary, according to the methods employed in their determination. The former are determined by lines of levels run either in both forward and backward directions or by simultaneous double-rodged lines, a high-grade instrument being used and special precautions being taken in observations and reduction to correct errors and make the line continuously good throughout. The latter or primary levels are determined with the Y level, precautions being taken against only the principal errors and the levels being run mostly in circuits of single lines. The allowable limit of error observed on the precise work already done by the Geological Survey in this State is represented in feet by  $0.02\sqrt{D}$  and that for the primary work by  $0.05\sqrt{D}$ , in which D is the length of circuit in miles.



*Bench marks.*—The standard bench marks are of two forms. The first form is a circular bronze or aluminum tablet (*C* and *E*, Pl. I),  $3\frac{1}{2}$  inches in diameter and  $\frac{1}{4}$  inch thick, having a 3-inch stem, which is cemented in a drill hole in solid rock in the wall of some public building, a bridge abutment, or other substantial masonry structure. The second form (*F*, Pl. I), used where masonry or rock is not available, consists of a hollow wrought-iron post  $3\frac{1}{2}$  inches in outer diameter and 4 feet in length. It is split at the bottom and spread out to a width of 10 inches in order to give a firm bearing on the earth, and is set about 3 feet in the ground. A bronze or aluminum-bronze cap is riveted upon the top of the post. A third style of bench mark, with abbreviated lettering (*B* and *D*, Pl. I), is used for unimportant points. This consists of a special copper nail  $1\frac{1}{2}$  inches in length driven through a copper washer seven-eighths inch in diameter. The tablets as well as the caps on the iron posts are appropriately lettered, and cooperation by States is indicated by the addition of the State name (*G*, Pl. I).

The numbers stamped on the bench marks described in the following pages represent the elevations to the nearest foot as determined by the levelman. These numbers are stamped with  $\frac{3}{16}$ -inch steel dies on the tablets or post caps, to the left of the word "Feet." The office adjustment of the notes and the reduction to mean sea-level datum may so change some of the figures that the original markings are 1 or 2 feet in error. It is assumed that engineers and others who have occasion to use the bench-mark elevations will apply to the Director of the United States Geological Survey, at Washington, D. C., for the adjusted values, and will use the markings as identification numbers only.

*Datum.*—All elevations determined by the United States Geological Survey and the United States Coast and Geodetic Survey are referred to mean sea level, which is the level that the sea would assume if the influence of winds and tides were eliminated. This level is not the elevation determined from the mean of the highest and the lowest tides, nor is it the half sum of the mean of all the high tides and the mean of all the low tides, which is called the half-tide level. Mean sea level is the average height of the water, all stages of the tide being considered. It is determined from observations made by means of tidal gages placed at stations where local conditions, such as long, narrow bays, rivers, and like features, will not affect the height of the water. To obtain even approximately correct results these observations must extend over at least one lunar month, and if accuracy is desired they must extend over several years. At ocean stations the half-tide level and the mean sea level usually differ but little. It is assumed that there is no difference between the mean sea

levels determined from observations in the Atlantic Ocean, the Gulf of Mexico, and the Pacific Ocean.

The connection with tidal stations for bench marks in certain areas that lie at some distance from the seacoast is still uncertain, and this fact is indicated by the addition of a letter or word to the right of the word "Datum" on tablets or posts. For such areas corrections for published results will be made from time to time as the precise-level lines of the United States Geological Survey, the United States Coast and Geodetic Survey, or other Government organizations are extended.

*Topographic maps.*—Maps of the following quadrangles wholly or partly in Georgia have been published by the United States Geological Survey up to September 1, 1915. They may be obtained for 10 cents each or \$3 for 50, except as otherwise noted, on application to the Director of the Survey at Washington, D. C.

Acworth. <sup>1</sup>	Gainesville.
Atlanta.	McCormick (Ga.-S. C.).
Carnesville (Ga.-S. C.).	Marietta.
Cartersville. <sup>1</sup>	Monroe.
Cartersville special. <sup>1</sup>	Opelika (Ala.-Ga.).
Cohutta.	Ringgold (Ga.-Tenn.).
Columbus (Ala.-Ga.).	Rome (Ga.-Ala.).
Crawfordville (Ga.-S. C.).	Stevenson (Ala.-Ga.-Tenn.).
Dahlonega (Ga.-N. C.).	Stilesboro. <sup>1</sup>
Dahlonega special.	Suwanee.
Dalton (Ga.-Tenn.).	Talbotton.
Ducktown special (Tenn.-Ga.-N. C.).	Tallapoosa (Ga.-Ala.).
Elberton (Ga.-S. C.).	Walhalla (Ga.-S. C.-N. C.).
Ellijay (Ga.-N. C.-Tenn.).	Wedowee (Ala.-Ga.).
Fort Payne (Ala.-Ga.).	

### PRECISE LEVELING.

Atlanta, Baxley, Brunswick, Cochran, Dalton, Eastman, Everett, Forsyth, Gresston, Jackson, Jesup, Lumber City, McDonough, McRae, Macon, Marietta, Ringgold, Rome, Scotland, Surrency, and Tobesofkee quadrangles.

APPLING, BIBB, BUTTS, CLAYTON, COBB, COFFEE, DODGE, FLOYD, FULTON, GLYNN, GORDON, HENRY, MONROE, PAULDING, POLK, PULASKI, TELFAIR, TWIGGS, WAYNE, AND WHITFIELD COUNTIES.

The elevations in the following list are a portion of the results of precise leveling carried from Morehead, N. C., through North Carolina, Tennessee, and Georgia to Brunswick, Ga. For description of the methods of leveling see under "Precise leveling" in North Carolina (Bull. 441, pp. 58-59). The leveling from Red Clay to Atlanta was done in 1897 by W. C. Hall; the remainder of the line was run in 1898 by E. L. McNair.

<sup>1</sup> Acworth, Cartersville special, and Stilesboro sheets show parts of Cartersville quadrangle on larger scale, and Cartersville special sheet shows parts of Acworth and Stilesboro quadrangles on the same scale.

## DALTON QUADRANGLE.

[Latitude 34° 30'–35°; longitude 84° 30'–85°.]

From Red Clay south along Southern Ry. to Carbondale.

	Feet.
Red Clay, in front of railroad station; top of west rail -----	822.9
Cohutta, 157 feet east of west rail of main track, in north front of W. A. Williams's brick store; bronze tablet stamped "866 MC" ----	865.728
Varnell, in front of station; top of west rail -----	807.6
Waring, 24 feet west of west rail of main track and 6.6 feet north of mile-post H 35; iron post stamped "795 MC" -----	794.013
Dalton, in front of station; top of west rail -----	758.7
Dalton, in water table at north side of Cleveland Street entrance of Whitfield County courthouse; bronze tablet stamped "774 MC" ----	773.419
PHELPS, 50 feet west of west rail opposite-switch point, at south end of side track, near southeast corner of post office; iron post stamped "712 MC" -----	711.283
Carbondale, at road crossing; top of west rail -----	761.6

## RINGGOLD QUADRANGLE.

[Latitude 34° 30'–35°; longitude 85°–85° 30'.]

From Carbondale south along Southern Ry. to Sugar Valley.

Miller, 76.4 feet west of west rail, at northeast corner of L. C. Rooker's store; iron post stamped "719 MC" -----	717.756
Sugar Valley, at road crossing; top of west rail -----	646.1

## ROME QUADRANGLE.

[Latitude 34°–34° 30'; longitude 85°–85° 30'.]

From Sugar Valley south along Southern Ry. to Rockmart.

Oostanaula, road crossing; top of west rail -----	630.7
Oostanaula River, west pedestal block of south abutment of bridge H 61.3, 7.6 feet west of west rail; copper bolt stamped "620 MC" --	618.981
Reeves, at road crossing; top of west rail -----	636.2
Plainville, in front of station; top of west rail -----	677.1
Pinson, 23.3 feet east of west rail and 15.3 feet north of switch point; iron post stamped "653 MC" -----	651.718
Shannon, in front of station sign; top of west rail -----	684.4
Harper, at road crossing; top of west rail -----	677.7
North Rome, in front of station; top of west rail -----	630.1
Etowah River, center of 300-foot bridge H 78.9; top of west rail ----	621.4
Rome, in face of steps to Fourth Avenue entrance of post office; aluminum tablet stamped "614 MC" -----	612.607
Rome, in front of station; top of west rail -----	610.3
Atlanta Junction, in front of station; top of west rail -----	606.4
Lindale, in front of station; top of west rail -----	651.1
Silver Creek, at road crossing; top of west rail -----	679.6
Chambers, at road crossing; top of west rail -----	702.9
Chambers, 0.08 mile south of, in north abutment of trestle H 86.3, 7 feet west of west rail; copper bolt stamped "697" -----	695.949
Briceville, at road crossing; top of west rail -----	824.7
Byrd, in front of station sign; top of west rail -----	862.0
Seney, in front of station; top of west rail -----	828.9

Seney, 0.4 mile south of, 6-foot arch culvert, in west face wall, 6.3 feet south of center of arch; copper bolt stamped "799 MC"-----	Feet. 797.967
Ravenel, at road crossing; top of west rail-----	738.4
Long, at road crossing; top of west rail-----	734.6
Seaboard Air Line Ry., under Southern Ry. bridge H. 101.7; top of north rail-----	745.0
Southern Ry. bridge H 101.7 over Seaboard Air Line Ry.; top of west rail-----	765.0
Rockmart, 0.1 mile north of, Euharlee Creek Bridge, in south abutment 5.7 feet west of west rail; copper bolt stamped "774 MC"-----	762.755
Rockmart, in front of station; top of west rail-----	764.4

## MARIETTA QUADRANGLE.

[Latitude 33° 30'-34°; longitude 84° 30'-85°.]

From Rockmart southeast along Southern Ry. to Oakdale.

Don, at road crossing; top of west rail-----	912.2
Beatty switch, at road crossing; top of west rail-----	926.4
Braswell, in front of station; top of west rail-----	1,056.1
Braswell, 0.5 mile south of, in west wall of tunnel, 3 feet from north portal; bronze tablet stamped "1088 MC"-----	1,087.074
South switch, in front of station; top of west rail-----	1,062.1
McPherson, 79.8 feet west of west rail, 30 feet south of road crossing. 2 feet from northeast corner of J. E. Butler's house; iron post stamped "1015 MC"-----	1,013.888
Pumpkinvine Bridge, at center of 360-foot viaduct H 116.7; top of west rail-----	910.5
Dallas, at road crossing; top of west rail-----	1,002.8
Dallas, west side of south entrance of Paulding County courthouse; bronze tablet stamped "1050 MC"-----	1,049.538
Hiram, in front of station; top of west rail-----	960.0
Powder Springs, 2.2 miles north of, 0.3 mile north of milepost 128, in rock formation on west side of cut; copper bolt stamped "957 MC"-----	956.170
Powder Springs, in front of station; top of west rail-----	912.6
Sweetwater Creek, center of 130-foot bridge H 133.4; top of west rail-----	896.0
Austell, in front of station; top of west rail-----	927.4
Austell, W. E. Shelerton's hotel, in north front of building, 6.7 feet from west corner; bronze tablet stamped "930 MC"-----	929.185
Mableton, in front of station; top of south rail-----	980.7
Nickajack, at road crossing; top of south rail-----	850.5
Starbuck field, road crossing; top of south rail-----	811.6
Lenox, 0.4 mile west of, 70 feet west of milepost 142, 8 feet south of south rail, in solid rock; copper bolt stamped "804 MC"-----	803.748
Lenox, at road crossing; top of south rail-----	795.9

## ATLANTA QUADRANGLE.

[Latitude 33° 30'-34°; longitude 84°-84° 30'.]

From Oakdale southeast along Southern Ry. to Tunis.

Oakdale, in front of station; top of south rail-----	809.2
Chattahoochee River bridge H 144.5, at west end of trestle approach; top of south rail-----	794.3

	Feet.
Payton, 16 feet south of south rail of main track and 12 feet west of west side of station; iron post stamped "855 MC"-----	854.400
Ellen N., in front of station; top of south rail-----	893.7
Atlanta, center of Union Station shed; top of rail-----	1,032.0
Atlanta, in north newel post of Washington Street entrance of State capitol; aluminum tablet stamped "1050 MC"-----	1,049.546
South Atlanta, road crossing; top of south rail-----	1,015.4
Constitution, 4 feet south of station signpost, 25 feet south of railroad; iron post stamped "847 Morehead, 1898"-----	847.006
Norton, opposite signpost; top of south rail-----	815.1
Henrico, at signpost; top of south rail-----	862.1
Conley, top of south rail-----	849.6
Ellenwood, 20 feet south of track, 2 feet northwest of station platform; iron post stamped "848 Morehead, 1898"-----	847.734
Rex, opposite signboard; top of west rail-----	781.4
Stockbridge, brick post-office building, 18 feet to left of front doorway, 2.5 feet above ground; aluminum tablet stamped "810 Morehead, 1898"-----	809.546
Tunis, at road crossing; top of west rail-----	782.0

#### McDONOUGH QUADRANGLE.

[Latitude 33° 45'-34°; longitude 84°-84° 15'.]

From Tunis southeast along Southern Ry. to Jenkinsburg.

Flippen, opposite station; top of west rail-----	860.0
McDonough, granite footstone of stone arch at right of main entrance to Henry County courthouse; aluminum tablet stamped "866 Morehead, 1898"-----	865.441
McDonough, in front of station; top of west rail-----	860.0
Locust Grove, 55 feet north of railroad station, 25 feet west of main track, 3 feet north of black-oak tree 4 inches in diameter; iron post stamped "837 Morehead, 1898"-----	836.236
Jenkinsburg, 25 feet west of Southern Ry. station, 20 feet south of track; iron post stamped "766 Morehead, 1898"-----	765.148

#### JACKSON QUADRANGLE.

[Latitude 33° 45'-34°; longitude 83° 45'-84°.]

From Jenkinsburg southeast along Southern Ry. to Flovilla.

Jackson, in front of station; top of west rail-----	696.5
Jackson, Butts County courthouse, in sandstone just above water table at right of front entrance; aluminum tablet stamped "727 Morehead, 1898"-----	726.287
Flovilla, in front of station; top of west rail-----	587.8

#### FORSYTH QUADRANGLE.

[Latitude 33°-33° 15'; longitude 83° 45'-84°.]

From Cork southeast along Southern Ry. to Dames Ferry.

Cork, 10 feet south of station platform; iron post stamped "546 Morehead, 1898"-----	545.597
Berner, in front of station; top of west rail-----	393.7

Juliette, 88 feet south of station, 15 feet west of center of track, 3 feet south of milepost 217; iron post stamped "375 Morehead, 1898"-----	Feet. 375.040
Dames Ferry, 3 feet north of station, 23 feet west of center of track; iron post stamped "347 Morehead, 1898"-----	346.663

## MACON QUADRANGLE.

[Latitude 32° 45'-33°; longitude 83° 30'-83° 45'.]

From Popes Ferry southeast along Southern Ry. to Macon.

Popes Ferry, in front of station; top of west rail-----	348.29
Holton, 35 feet north of station, 29 feet west of center of track; iron post stamped "339 Morehead, 1898"-----	338.733
Virgin, road crossing; top of west rail-----	328.4
Virgin, 0.9 mile south of, at milepost 236; top of west rail-----	309.6
Macon, United States post-office building at corner of Mulberry and Third streets, in water table at left of Mulberry Street entrance; aluminum tablet stamped "334 Morehead, 1898" <sup>1</sup> -----	333.942
Macon, northeast corner of new post-office building; aluminum tablet-----	332.625
Macon, 0.7 mile south of, at crossing of Central of Georgia Ry. and Southern Ry.; top of west rail of Southern Ry-----	310.3

## TOBESOFKEE QUADRANGLE.

[Latitude 32° 30'-32° 45'; longitude 83° 30'-83° 45'.]

From Reid southeast along Southern Ry. to Adams Park.

Reid, opposite signboard, 40 feet southwest of center of main track; iron post stamped "272 Morehead, 1898"-----	271.719
Bullards, 2 feet south of south end of platform, 35 feet east of center of main track; iron post stamped "259 Morehead, 1898"-----	258.468
Adams Park, 19 feet east of center of track, 3.5 feet south of platform; iron post stamped "259 Morehead, 1898"-----	258.640

## COCHRAN QUADRANGLE.

[Latitude 32° 15'-32° 30'; longitude 83° 15'-83° 30'.]

From Adams Park southeast along Southern Ry. to Empire.

Westlake, 33 feet east of center of main track, 2.5 feet south of station platform; iron post stamped "234 Morehead, 1898"-----	234.130
McGriff, 12.5 feet west of center of track, 4.5 feet south of pump house; iron post stamped "259 Morehead, 1898"-----	258.517
Longstreet, in front of station; top of rail-----	301.5
Cochran, 55 feet west of station platform, 33 feet west of center of main track, 3 feet north of large telegraph pole; iron post stamped "342 Morehead, 1898"-----	341.471
Empire, 50 feet north of station platform, 13 feet west of center of main track, 4 feet south of post marked "Stop;" iron post stamped "381 Morehead, 1898"-----	381.170

<sup>1</sup> This bench mark was destroyed with building in 1906, and the new one was established in 1907 by precise levels from Holton.

## GRESSTON QUADRANGLE.

[Latitude 32°-32° 15'; longitude 83° 15'-83° 30'.]

## At Gresston.

Gresston, 26 feet west of southwest corner of station, 17 feet west of center of track; iron post stamped "400 Morehead, 1898"-----	Feet. 400.287
---	------------------

## EASTMAN QUADRANGLE.

[Latitude 32°-32° 15'; longitude 83°-83° 15'.]

## From Eastman southeast along Southern Ry. to Cox.

Eastman, 37 feet north of station, 17 feet west of center of track; iron post stamped "357 Morehead, 1898"-----	356.697
Godwinsville, 15 feet north of station, 20.5 feet west of center of main track; iron post stamped "312 Morehead, 1898"-----	311.460
Chauncey, 47 feet north of center of main track, 2 feet east of station platform; iron post stamped "300 Morehead, 1898"-----	299.294
Misler, in front of station; top of west rail-----	292.7
Cox, in front of station; top of west rail-----	286.8

## McRAE QUADRANGLE.

[Latitude 32°-32° 15'; longitude 82° 45'-83°.]

## From Cox southeast along Southern Ry. to McRae.

Achord, opposite signboard; top of south rail-----	274.1
Achord, opposite signboard near west end of siding, 100 feet south of southwest corner of store, 28 feet south of center of main track; iron post stamped "275 Morehead, 1898"-----	274.532
Helena, crossing of Southern Ry. and Georgia & Alabama Ry.; south rail of Southern Ry-----	246.6
McRae, 8 feet east of railway station platform, 1 foot east of telegraph pole and 32 feet south of center of main track; iron post stamped "229 Morehead, 1898"-----	229.327

## SCOTLAND QUADRANGLE.

[Latitude 31° 45'-32°; longitude 82° 45'-83°.]

## From McRae southeast along Southern Ry. to Towns.

Scotland, 8 inches east of east edge of railway station platform, 35 feet south of center of main track; iron post stamped "142 Morehead, 1898"-----	141.769
Towns, 39 feet south of center of railway station platform, 34 feet south of center of main track; iron post stamped "128 Morehead, 1898"-----	217.505

## LUMBER CITY QUADRANGLE.

[Latitude 31° 45'-32°; longitude 82° 30'-82° 45'.]

## From Lumber City southeast along Southern Ry. to Hazlehurst.

Lumber City, 200 feet east of railway station, 52 feet north of center of main track, 26 feet southwest of corner of barber shop, 3.5 feet west of chinaberry tree; iron post stamped "146 Morehead, 1898"-----	145.479
Hazlehurst, 30 feet south of center of main track, 2 feet east of railway station platform; iron post stamped "256 Morehead, 1898"-----	255.640



## BAXLEY QUADRANGLE.

[Latitude 31° 30'–31° 45'; longitude 82° 15'–82° 30'.]

From Hazlehurst southeast along Southern Ry. to Wheaton.

	Feet.
Graham, 9.5 feet west of station, 26 feet south of center of main track, 2.5 feet north of telegraph pole; iron post stamped "244 Morehead, 1898"-----	243. 894
Pine Grove, 39 feet east of road crossing, 47 feet east of freight platform at station, 16 feet south of center of main track, between two posts supporting sign "Pine Grove;" iron post stamped "229 Morehead, 1898"-----	229. 116
Baxley, 67 feet east of end of railway station building, 37 feet south of center of main track, 4 feet west of telegraph pole; iron post stamped "206 Morehead, 1898"-----	205. 887
Wheaton, 57 feet northeast of northeast corner of freight platform at station, 44 feet south of corner of shanty, 33 feet north of center of main track; iron post stamped "200 Morehead, 1898"-----	200. 480

## SURRENCY QUADRANGLE.

[Latitude 31° 30'–31° 45'; longitude 82°–82° 15'.]

From Surrency southeast along Southern Ry. to Odum.

Surrency, 45 feet south of railway station platform, 37 feet south of center of main track; iron post stamped "187 Morehead, 1898"-----	186. 429
Brentwood, 54 feet east of freight building and platform at railway station, 36 feet north of center of main track, 45 feet south of store; iron post stamped "167 Morehead, 1898"-----	166. 696
Odum, 78 feet west of station platform, 25.5 feet south of center of main track, 43.5 feet north of porch of L. Carter & Bros.' warehouse; iron post stamped "155 Morehead, 1898"-----	154. 810

## JESUP QUADRANGLE.

[Latitude 31° 30'–31° 45'; longitude 81° 45'–82°.]

At Jesup.

Jesup, 2.5 feet southwest of Southern Ry. station (also station of Atlantic Coast Line), 33 feet northwest of center of main track of Atlantic Coast Line; iron post stamped "99 Morehead, 1898"-----	99. 496
---	---------

## EVERETT QUADRANGLE.

[Latitude 31° 15'–31° 30'; longitude 81° 30'–81° 45'.]

From Gardi southeast along Southern Ry. to point 2 miles north of Dock Junction.

Gardi, 2.5 feet from southeast corner of railway station, 39 feet northeast of center of main track; iron post stamped "61 Morehead, 1898"-----	61. 341
Pandarvis, between signboard posts 850 feet south of head block at north end of siding, 22 feet northeast of center of main track, 174 feet south of corner of dwelling house; iron post stamped "85 Morehead, 1898"-----	85. 132
Mount Pleasant, 95 feet northwest of railway station, 42 feet southwest of center of main track; iron post stamped "55 Morehead, 1899"-----	55. 443

Everett, 29 feet west of railway station, 11.5 feet west of center of main track, 109.5 feet northwest of center of crossing of the Southern Ry. and the Atlantic Coast Line R. R., 2.5 feet northwest of telegraph pole; iron post stamped "16 Morehead, 1899"-----	Feet. 16.305
Pennick, 160 feet north of head block at south end of siding, 24 feet east of center of main track, between posts supporting signboard; iron post stamped "18 Morehead, 1899"-----	18.239
Sterling, in front of station; top of west rail-----	20.7
Dock Junction, 2 miles north of, at crossing of the Southern Ry. and the Atlanta, Birmingham & Atlantic R. R., 22 feet northeast of center of latter's track, 23.5 feet east of center of Southern track; iron post stamped "24 Morehead, 1899"-----	24.647

## BRUNSWICK QUADRANGLE.

[Latitude 31°-31° 15'; longitude 81° 15'-81° 30'.]

## At Brunswick.

Brunswick, at southwest corner of Newcastle and Mansfield streets, in foundation wall at right of Newcastle Street entrance of city hall; aluminum tablet stamped "10 Morehead, 1899"-----	10.688
Brunswick, Glauber & Isaac's warehouse, near McCullough's wharf; large spike in oak stump under hole made through floor (U. S. Engineer Corps elevation, 7.662)-----	7.659
Brunswick, 80 feet south of Glauber & Isaac's warehouse, 12 feet west of office building, on spike in notch on southwest side of live-oak tree 20 inches in diameter (U. S. Engineer Corps elevation, 8.572)-----	8.626
Brunswick, McCullough's wharf, 20 feet back from and 16 feet south of edge of ballast pile, top of coupling of 1½-inch gas pipe driven in ground now about 15 inches above surface (U. S. Engineer Corps elevation, 6.922)-----	6.871
Brunswick, northeast corner of F and Oglethorpe streets, top of iron pipe 1 foot below surface of sidewalk, 1 foot from fence on line of Oglethorpe Street; bricks to be removed (U. S. Engineer Corps elevation, 14.432)-----	14.725

## Ringgold quadrangle.

[Latitude 34° 30'-35°; longitude 85°-85° 30'.]

## DADE COUNTY.

The elevation following is a portion of the results of precise levels extending from Chattanooga to Nashville, Tenn. The section of this line from Chattanooga, Tenn., to Stevenson, Ala., was recovered by the Coast and Geodetic Survey precise levels, the adjustment of which has caused the original elevations by this line at Stevenson to be raised 0.157 foot with respect to Chattanooga. The remainder of the line to Nashville is a spur. The simultaneous double-rod method was used. The leveling was done in 1899 by W. W. Gilbert.

From Chattanooga southwest along Nashville, Chattanooga & St. Louis Ry. to Stevenson, Ala. (portion of line).

Hooker, 2.3 miles west of, at west end face of tunnel, south side of track, 4 feet above rails; bronze tablet stamped "974"-----	Feet. 970.638
--	------------------

## Macon and Meriwether quadrangles.

## BALDWIN, BIBB, AND JONES COUNTIES.

The following are the unadjusted results of a precise line of levels run in 1906, beginning at an iron post at Holton station, stamped "339 Morehead, 1898," on the precise line from Atlanta to Brunswick, and running southeast along the Southern Railway to Macon, thence northeast along the Georgia Railroad to Milledgeville. The elevation of the bench mark at Holton, as determined by the 1912 adjustment, is accepted as 338.733 feet above mean sea level. The total divergence between direct and reverse lines was 0.023 foot in a total distance of 39 miles.

## MACON QUADRANGLE.

[Latitude 32° 45'-33°; longitude 83° 30'-83° 45'.]

## From Holton via Macon to James.

Holton, 35 feet north of station, 29 feet west of center of track; iron post stamped "Morehead 339, 1898"-----	Feet. 338. 733
Molton, 5.10 miles south of, at road to Macon Gas & Light Co.'s plant, corner of fence; iron post stamped "310"-----	310. 423
Macon, northeast corner of new post office; aluminum tablet stamped "333"-----	332. 625
Macon, 3.65 miles northeast of; west side of track, 4 feet south of milepost 187; iron post stamped "351"-----	351. 206
Macon & Atlanta Junction, in front of station; top of rail-----	348. 0
Macon & Atlanta Junction, 1.83 miles northeast of, 15 feet west of milepost 72; iron post stamped "467"-----	466. 909
Roberts, west side of track, 35 feet west of station; iron post stamped "539"-----	538. 701
Roberts, 2.36 miles northeast of, west side of track, railroad crossing south side of highway, 880 feet south of milepost 66; iron post stamped "564"-----	564. 317
James, in front of station; top of rail-----	490. 325
James, 0.94 mile northeast of, west side of track, milepost 63, top of aluminum tablet stamped "486"-----	485. 680

## MERIWETHER QUADRANGLE.

[Latitude 33°-33° 15'; longitude 83° 15'-83° 30'.]

## From James northeast along Georgia R. R. to Milledgeville.

Haddock, in front of station; top of rail-----	484. 178
Haddock, Jones County Bank, front face; aluminum tablet stamped "499"-----	499. 212
Browns Crossing, in front of station; top of rail-----	362. 658
Browns Crossing, 0.93 mile northeast of, north side of track, milepost 53, top of; aluminum tablet stamped "337"-----	337. 142
Browns Crossing, 3.84 miles northeast of, west side of track, milepost 50, top of; aluminum tablet stamped "356"-----	355. 582
State Farm, in front of station; top of rail-----	321. 421
State Farm, 0.84 mile northeast of, 1.5 miles south of Milledgeville, west side of track, top of milepost 47; aluminum tablet stamped "360"-----	360. 496

## PRIMARY LEVELING.

Dahlonega, Dalton, and Ellijay quadrangles.

FANNIN, GILMER, HABERSHAM, LUMPKIN, MURRAY, RABUN, TOWNS, UNION, WHITE, AND WHITFIELD COUNTIES.

The elevations in the following list were determined from connection with precise leveling at Dalton. The leveling was done as follows: In Dahlonega and Ellijay quadrangles in 1896 by T. S. Mauldin, jr.; in Dalton and Ellijay quadrangles in 1900 by W. S. D. Moore; and in Ellijay quadrangle in 1907 by W. H. Gray and J. S. Martin. The bench marks established in 1896 are stamped with figures of elevation which are nearly 33 feet greater than the heights now accepted.

DALTON QUADRANGLE (EMBRACING COHUTTA, ENOCH, SPRING PLACE, AND TALKING ROCK 15' QUADRANGLES).

[Latitude 34° 30'-35°; longitude 84° 30'-85°.]

From Dalton east along highways to Wolf Pen Gap.

	Feet.
Dalton, north side of Cleveland Street entrance to county courthouse, in water table; bronze tablet stamped "774 M. C."-----	773. 419
Oran, 1.5 miles east of, 0.5 mile east of Federal road, on north edge of road, in limestone; bronze tablet stamped "800 Atlanta"-----	799. 213
Hassler Mill, 1 mile northeast of, 1.5 miles east of junction of Dalton road with Westfield pike, 0.1 mile north of John Gregory's residence, west edge of road, in limestone; bronze tablet stamped "919 Atlanta"-----	918. 195
Conasauga, on south side of road opposite John McClurd's store, in sandstone; bronze tablet stamped "1518 Atlanta"-----	1, 517. 225
Wolf Pen Gap-----	1, 924

ELLIJAY QUADRANGLE (EMBRACING BLUE RIDGE, CARTECAY, HEMP, AND RANDA 15' QUADRANGLES).

[Latitude 34° 30'-35°; longitude 84°-84° 30'.]

From Wolf Pen Gap east along highways to Cherry Log, thence northeast along Louisville &amp; Nashville R. R. to Mineral Bluff.

Ellijay, 6 miles north of, 0.5 mile north of road leading to Wolf Pen Gap, 100 feet east of branch flowing south and 500 feet east of William Harper's residence, in rock north of road; bronze tablet stamped "1739 Atlanta"-----	1,737. 552
Blue Ridge, in southeast corner of front wall of Boling & Crawford's store; bronze tablet stamped "1751 Atlanta"-----	1, 718. 219
Toccoa River railroad bridge, top of pier at south end; marked point on marble block-----	1, 548. 02
Cole Crossing, 250 feet west of track, north of road, in ledge of slate rock; copper bolt stamped "1702"-----	1, 669. 541

From Mineral Bluff southeast along highway to Morganton, thence west to Blue Ridge.

Mineral Bluff, 0.5 mile east of, in ledge of slate on left of road, 225 feet east of Burrell's blacksmith shop; hole-----	1, 611. 532
Morganton, grove opposite Baptist Church; copper bolt stamped "1839"-----	1, 806. 223

From Morganton east along highway to Young Cane, thence southwest to Dick, thence north to Morganton.

Feet.

Brackett's store, opposite church near store, southwest of and 110 feet from intersection of roads; copper bolt stamped "1906"-----	1, 873. 209
Hemptown Gap, at summit, 65 feet southwest of nail in root of white-oak tree on right of road; copper bolt stamped "2211"-----	2, 178. 122
Young Cane, at side of Butt's store; iron post stamped "1966"-----	1, 933. 037
Skeenah Gap, at summit dwelling, in large rock in lane to left; copper bolt stamped "2388"-----	2, 355. 577
Cochrans, 0.5 mile west of, in rock at north edge of road; copper bolt stamped "1887 Ft."-----	1, 853. 887
Wilscot, 0.3 mile southeast of, rock on right of road near spring, in rocky ledge above river; copper bolt stamped "1859"-----	1, 826. 439
Morganton, fork of road near William Woody's house, in large rock; copper bolt stamped "U. S. G. S. 1981 Ft. B. M."-----	1, 947. 821

From Young Cane southeast along highway to Mulky Gap, thence south to Cavender Bridge, thence west to Dial.

Mulky Gap, 200 yards north of summit, in large rock on left of road; copper bolt stamped "2760"-----	2, 727. 753
Cavender Bridge over Toccoa River, near north end, in large rock; copper bolt stamped "2095"-----	2, 062. 207

From Toccoa River road south up Rock Creek road toward Argo.

Argo, 2 miles north of, at crossing of Rock Creek, in rock on left edge of road; copper bolt stamped "2199"-----	2, 166. 834
--	-------------

From Cavender Bridge south along highway to Dahlonega.

Gaddistown, 0.5 mile south of, across road from Anderson & Jones's store at road forks, in large rock; copper plug stamped "U. S. G. S. 2152 Ft. B. M."-----	2, 119. 15
Cooper Gap, summit of, 175 feet to left of road, in field; copper bolt stamped "2861"-----	2, 828. 194
Two Run, 2 miles southeast of, in large quartz rock on right of road about 700 feet beyond fork of Narrow Gauge and Dahlonega roads; copper bolt stamped "1632"-----	1, 599. 230
Jay, under west end of bridge across Etowah River, in rock; copper bolt stamped "U. S. G. S. B. M. 1360 Ft."-----	1, 327. 801

From Blairsville northwest along highway to Culberson, N. C.

Ivylog Church, at Murphy-Culberson road fork; iron post stamped "1949"-----	1, 915. 851
Culberson, N. C., 1.5 miles southeast of, in rock at crossing of creek on right of road, about 700 feet beyond stream; copper bolt stamped "1617"-----	1, 584. 546

From Blue Ridge north along Louisville & Nashville R. R. to McCays (double-run line).

Curtis, 2 miles south of, at right of railroad, on rock ledge; aluminum tablet stamped "1533"-----	1, 533. 074
--	-------------

25070°—Bull. 635—16—2

Galloway, 1,800 feet north of, 110 feet south of Cattle Gap, in rock east of railroad; aluminum tablet stamped "1512"-----	Feet. 1,511.923
Kyle, 2 miles north of, railroad bridge across Toccoa River, north end of east abutment, fifth course of stone in abutment, east side; aluminum tablet stamped "1472" (elevation possibly plus or minus 1 foot in error)-----	1,471.344

**DAHLONEGA QUADRANGLE.**

[Latitude 34° 30'–35°; longitude 83° 30'–84°.]

**From Blairsville southeast along highway to Tesnatee Gap, thence southwest to Dahlonega.**

Blairsville, in foundation wall at northwest corner of county courthouse; bronze tablet stamped "1892 Atlanta"-----	Feet. 1,891.536
Choestoe, 0.5 mile northwest of, 300 feet east of Southern mill, in ledge of rock south of road; bronze tablet stamped "1913 Atlanta"-----	1,911.837
Tesnatee Gap, at summit of mountain, 10 feet west of road; bronze tablet stamped "3138 Atlanta"-----	3,137.442
Willow, 3 miles north of, 400 feet west of ford of Chestatee River, 15 feet west of center of road; bronze tablet stamped "1529 Atlanta"-----	1,528.649
Porter Springs, 3.5 miles south of, 0.5 mile south of road fork, 500 feet south of crossing of branch, west of road, in sandstone; bronze tablet stamped "1581 Atlanta"-----	1,579.855
Dahlonega, North Georgia Agricultural College, in south wall of west L of main building; aluminum tablet stamped "1484 Atlanta"-----	1,483.188
<b>From point near Loudsville southeast along highway to Cleveland, thence northeast to Robertstown, thence southeast to Clarkesville.</b>	
Loudsville, 1 mile southeast of post office, 950 feet south of crossroads, west of road, in sandstone; bronze tablet stamped "1597 Atlanta"-----	1,596.459
Cleveland, in east front at southeast corner of county courthouse; aluminum tablet stamped "1571 Atlanta"-----	1,570.562
Nacoochee, 200 feet west of ford to Chattahoochee River, in ledge of rock 6 feet above surface of road; aluminum tablet stamped "1349 Atlanta"-----	1,348.269
Robertstown, 500 feet south of road fork, 200 feet east of creek, in large boulder; bronze tablet stamped "1468 Atlanta"-----	1,466.775
Pole, 0.6 mile west of, 0.2 mile east of Cleveland road, north of road, in sandstone; bronze tablet stamped "1415 Atlanta"-----	1,413.666
Clarkesville, north side of east entrance to county courthouse; aluminum tablet stamped "1372 Atlanta"-----	1,371.991
<b>From Cleveland southeast along highway to View, thence northeast to Clarkesville.</b>	
Benefit, 1 mile northwest of, 2.5 miles southeast of Cleveland, north of road, in rock ledge; bronze tablet stamped "1476 Atlanta"-----	1,475.362
Mossy Creek, 1.25 miles east of, 400 feet east of branch flowing northeast, 60 feet north of road, in stone; bronze tablet stamped "1330 Atlanta"-----	1,329.558
Demorest, step at entrance to bank; top of southwest corner-----	1,349.17
<b>From Demorest south along highway and Tallulah Falls Ry. to Cornelia.</b>	
Cornelia, at southwest corner of King & Seller's store; bronze tablet stamped "1522 Atlanta"-----	1,521.391

From Clarkesville north along highway via Soque to Burton, thence west via Hiwassee to Blairsville.

Bowden's mills, 5 miles north of Clarkesville, 500 feet north of road, at edge of creek bed, opposite north end of wool carder building; bronze tablet stamped "1370 Atlanta"-----	Feet. 1,370.561
Soque, 0.25 mile north of, on right bank of Soque River, 70 feet above ford, in rock; bronze tablet stamped "1585 Atlanta"-----	1,585.650
Burton, 2 miles south of, 200 feet south of Moccasin Creek ford, west of road, in rock; bronze tablet stamped "1784 Atlanta"-----	1,783.917
Burton, 1,000 feet north of, 400 feet south of road fork, between road and river, in rock; bronze tablet stamped "1795 Atlanta"-----	1,795.140
Dick Creek Gap, 100 feet west of summit, 50 feet south of road, in rock; bronze tablet stamped "2668 Atlanta"-----	2,668.324
Visage, 1 mile east of, at point where road crosses bend in Hightower Creek, 50 feet west of upper crossing, in rock; bronze tablet stamped "2067 Atlanta"-----	2,067.822
Hiwassee, 3.5 miles southeast of, at fork of Unicoi Gap road, north of Clayton road, opposite end of bridge, in rock; bronze tablet stamped "1914 Atlanta"-----	1,914.265
Hiwassee, at northwest corner of front vestibule of county court house; aluminum tablet stamped "1984 Atlanta"-----	1,983.634
Hiwassee, 4.5 miles west of, 2,000 feet east of road fork to Warne, at top of bank south of road, in boulder; bronze tablet stamped "1948 Atlanta"-----	1,947.835
Young Harris, in College Chapel, front wall near southeast corner; bronze tablet stamped "1928 Atlanta"-----	1,928.416

From Soque north on Nacoochee road (spur line).

Soque, 2.5 miles north of, 800 feet west of fork of Nacoochee and Clayton roads, 70 feet west of Spring branch, north of road, in rock; bronze tablet stamped "1694 Atlanta"-----	1,694.049
---	-----------

From Hiwassee south along highway to Mountain Scene (spur line).

Mountain Scene, 2 miles south of, 1,000 feet south of crossing of Center Creek, west of road, in rock; bronze tablet stamped "2188 Atlanta"-----	2,187.547
--	-----------

Cartecay, Cohutta, Enoch, Spring Place, Talking Rock, and Waleska quadrangles.

GILMER, GORDON, MURRAY, AND PICKENS COUNTIES.

The elevations in the following list were determined by primary leveling, and accord with Bulletin 441 and the 1912 adjustment.

The leveling was done in Enoch and Spring Place quadrangles, in 1914, by H. S. Senseney, in Cartecay, Cohutta, and Waleska quadrangles, in 1914, by K. W. Trimble, and in Talking Rock quadrangle, in 1914, by Senseney and Trimble. Leveling was also done in Cohutta and Spring Place quadrangles, in 1911, by C. W. Arnold, but the closure error was excessive.

## CARTECAY QUADRANGLE.

[Latitude 34° 30'–34° 45'; longitude 84° 15'–84° 30'.]

From Tioga north along Louisville & Nashville R. R. to Ellijay, thence to point  
1 mile west.

	Feet.
Tioga, opposite signboard "Tioga"; top of rail-----	1, 201. 1
Tioga, 1.1 miles north of, 30 feet west of Louisville & Nashville R. R., in base of telegraph pole; copper nail, marked "1275.5 b. m."-----	1, 287. 06
Ellijay, 4.1 miles south of, 12 feet south of point of frog of Ella Gap siding, 9 feet east of Louisville & Nashville R. R., in sandstone ledge; bronze tablet stamped "1368"-----	1, 369. 754
Ellijay, 2.9 miles south of, 30 feet west of Louisville & Nashville R. R., in base of telegraph pole; copper nail marked "1258.7 b. m."-----	1, 270. 24
Ellijay, 1.4 miles south of, 100 feet south of grade crossing, 30 feet west of Louisville & Nashville R. R., in base of telegraph pole; cop- per nail marked "1247.8 b. m."-----	1, 259. 35
Ellijay, 150 feet northeast of Louisville & Nashville R. R. station, in lower bench of concrete retaining wall, east side of steps to terrace of Marble Terrace Hotel; bronze tablet stamped "1275"-----	1, 276. 272
Ellijay, Gilmer County courthouse, on west end of center marble step to south entrance; chiseled square-----	1, 290. 92
Ellijay, 0.9 mile west of, 20 feet north of highway, in root of pine tree; copper nail marked "1573.9 b. m."-----	1, 572. 38

## COHUTTA QUADRANGLE.

[Latitude 34° 45'–35°; longitude 84° 30'–84° 45'.]

Ollie, 0.7 mile north of post office, 270 feet north of grist mill, 8 feet west of highway, on sandstone ledge; chiseled square marked "B. M."-----	1, 590. 32
Conasauga, 40 feet east of old store and post office, 75 feet north of road fork, in sandstone ledge; bronze tablet stamped "1518"-----	1, 517. 225

From Conasauga north along highway to point on Jacks River 4 miles north of  
Sassafras Gap. (Excessive error distributed in this line.)

Ellijay, 10 miles northwest of, opposite store where Conasauga post office formerly was, in outcrop ledge; bronze tablet stamped "1518 Atlanta"-----	1, 517. 225
Ellijay, 10 miles northwest of, northeast of road forks, west side of road, on rock boulder; chiseled square, marked "B. M. 1652"-----	1, 652. 17
Ellijay, 8.5 miles northwest of, 30 feet northeast of road forks, 80 feet northeast of house, in root of sycamore tree, marked "B. M. 1564"; nail-----	1, 564. 13
Ellijay, 8 miles northwest of, 0.5 mile east of Mountaintown Creek, in rock ledge north of road; aluminum tablet stamped "1655"-----	1, 654. 537
Ellijay, 7.5 miles northwest of, at top of hill, 4 feet south of road, in root of pine tree, marked "B. M. 1965"; nail-----	1, 965. 19
Ellijay, 7 miles northwest of, at road forks, 150 feet northwest of schoolhouse, 10 feet south of road, in root of white-oak tree, marked "B. M. 1775"; nail-----	1, 774. 93



Ellijay, 8 miles north of, 300 feet south of house, south of road, in rock ledge; aluminum tablet stamped "1765"-----	Feet. 1,764.741
Ellijay, 10 miles north of, 20 feet north of stream crossing, 120 feet northeast of house, in root of walnut tree, marked "B. M. 1843"; nail-----	1,843.44
Ellijay, 11 miles north of, 0.75 mile south of Sassafras Gap, 300 feet southwest of house, east side of road; point on rock marked "B. M. 2522"-----	2,522.39
Ellijay, 12 miles north of, in Sassafras Gap, 50 feet west of trail, in large boulder; aluminum tablet stamped "3140"-----	3,140.566
Ellijay, 13 miles north of, 10 feet northeast of road forks, 600 feet east of house, in root of chestnut stump, marked "B. M. 2741"; nail-----	2,740.76
Ellijay, 15 miles north of, east side of road; point on rock, marked "B. M. 2522"-----	2,522.52
Ellijay, 16 miles north of, 0.5 mile south of church, 0.25 mile north of road forks, at mouth of West Fork of Jacks River, in rock ledge; aluminum tablet stamped "2477"-----	2,477.530

From point on Jacks River 4 miles north of Sassafras Gap north along Jacks River to Alaculsy, thence west along highway to Cisco, thence south along Louisville & Nashville R. R. to point 1.7 miles north of Eton. (Excessive closure error distributed in this line.)

Alaculsy, 16 miles southeast of, 3 feet east of road, 400 feet south of drain, in outcrop rock; aluminum tablet stamped "2407"-----	2,406.604
Alaculsy, 15.3 miles southeast of, west of road, on rock ledge; chiseled square, marked "B. M. 2318"-----	2,317.96
Alaculsy, 14.6 miles southeast of, 100 feet east of Jacks River, opposite small drain, 5 feet east of road, in large boulder; aluminum tablet stamped "2047"-----	2,046.541
Alaculsy, 13.2 miles southeast of, east bank of Jacks River, 10 feet north of road crossing, 450 feet south of bridge over river; chiseled square on large boulder, marked "B. M. 1948"-----	1,947.47
Alaculsy, 12.8 miles southeast of, 30 feet west of Jacks River, on large boulder; chiseled square, marked "B. M. 1893"-----	1,892.55
Alaculsy, 11.7 miles southeast of, 6 feet east of Jacks River, on outcrop rock; chiseled square, marked "B. M. 1773"-----	1,772.62
Alaculsy, 11.2 miles southeast of, 15 feet east of Jacks River, in rock ledge; aluminum tablet stamped "1733"-----	1,732.660
Alaculsy, 10.2 miles southeast of, west of road, on rock ledge; chiseled square, marked "B. M. 1711"-----	1,710.33
Alaculsy, 9 miles southeast of, at Beech Bottom, 40 feet east of stream crossing, 15 feet north of road, in root of small pine tree marked "B. M. 1549"; nail-----	1,548.27
Alaculsy, 7.7 miles southeast of, 2 feet north of road, in outcrop rock; aluminum tablet stamped "1723"-----	1,722.337
Alaculsy, 5.5 miles southeast of, 8 feet north of road, in root of apple tree, marked "B. M. 1432"; nail-----	1,431.67
Alaculsy, 3.4 miles east of, south side of road, on rock at bend; aluminum tablet stamped "1513"-----	1,513.295
Alaculsy, 0.2 mile east of, 30 feet southwest of ford across Jacks River, 15 feet east of road; chiseled square on large boulder,	

	Feet.
Alaculsy, 1.5 miles east of, 10 feet east of road forks, 250 feet south of railroad; chiseled square on boulder, marked "B. M. 1003"-----	1,003.28
Alaculsy, 0.2 mile east of, 30 feet southwest of ford, across Jacks River, 15 feet east of road; chiseled square on large boulder, marked "B. M. 956"-----	955.68
Alaculsy, near, 70 feet east of wagon bridge over Conasauga River; nail in small walnut tree (U. S. Corps of Engineers' bench mark)-----	978.62
Doogan, 1.1 miles east of, 40 feet west of wagon bridge over Conasauga River, 20 feet south of road, in outcrop rock; bronze tablet stamped "983"-----	982.412
Doogan, 30 feet north of, in small oak tree root; nail, marked "B. M. 1069"-----	1,069.23
Cisco, 4.8 miles east of, north side of road; chiseled square on large boulder, marked "B. M. 1072"-----	1,071.98
Cisco, 3.2 miles east of, 60 feet southwest of house, 10 feet south of road, in outcrop of rock; bronze tablet stamped "1267"-----	1,267.274
Cisco, 2.2 miles east of, 50 feet west of road forks, at top of hill; chiseled square on rock ledge, marked "B. M. 1111"-----	1,111.31
Cisco, 1 mile east of, at road forks, 10 feet southeast of, 100 feet southeast of schoolhouse, in root of oak stump, marked "B. M. 948"; nail-----	947.83
Cisco, 300 feet south of station, in east end of concrete culvert of Louisville & Nashville R. R.; bronze tablet stamped "828"-----	827.926
Fairy, 1.6 miles north of, 400 feet north of deep cut on Louisville & Nashville R. R., on west end of concrete culvert; chiseled square marked "B. M. 860"-----	860.08
Fairy, 0.3 mile north of, in southeast corner of east end of concrete culvert of Louisville & Nashville R. R.; bronze tablet stamped "822"-----	822.348
Crandall, 3.2 miles north of, on west end of concrete culvert of Louisville & Nashville R. R.; chiseled square, marked "B. M. 805"-----	805.26
Crandall, 1.7 miles north of, in east pier of Louisville & Nashville bridge 14, over Sumac Creek; bronze tablet stamped "781"-----	780.445
Crandall, 0.3 mile south of, 30 feet north of wagon bridge over Louisville & Nashville R. R.; top of switch bolt marked "B. M. 828"-----	827.92
Eton, 1.7 miles north of, west side of track; top of bolt in cattle guard over concrete viaduct, marked "B. M. 792"-----	792.00

ENOCH QUADRANGLE.

[Latitude 34° 30'–34° 45'; longitude 84° 45'–85°.]

Near Chatsworth on Louisville & Nashville R. R.

Chatsworth, 1.5 miles south of, west end of culvert; bronze tablet stamped "719"-----	719.012
Chatsworth, 2.6 miles south of, 25 feet north of road crossing, in mile post marked "L 381 E 47"; spike, painted "U. S. B. M. 729"-----	728.44

## SPRING PLACE QUADRANGLE.

[Latitude 34° 45'-35°; longitude 84° 45'-85°.]

From Eton southeast along Louisville &amp; Nashville R. R. to Chatsworth.

Eton, 0.5 mile north of, east end of concrete culvert of Louisville & Nashville R. R.; aluminum tablet stamped "754"-----	Feet. 753.930
Eton, in front of station; top of east rail-----	734.9
Eton, 1 mile south of, west end of culvert; chiseled square painted "718"-----	718.16
Eton, 2.3 miles south of, 500 feet north of bridge over railroad, east end of culvert; chiseled square, painted "U. S. 752."-----	752.36
Eton, 3 miles south of, west end of culvert; bronze tablet stamped "755"-----	755.28
Chatsworth, in front of station; top of west rail-----	728.8
Chatsworth, road crossing south of station, at northeast corner, in telephone pole; spike painted "U. S. B. M. 725"-----	725.00
[Latitude 34° 45'-35°; longitude 84° 45'-85°.]	

From point 1.5 miles east of Oran and 0.5 mile south of Federal road north along Louisville & Nashville R. R. to point 0.5 mile north of Eton. (An excessive closure error has been distributed in this line.)

Chatsworth, 2 miles northeast of, 0.5 mile east of Federal road, in limestone ledge; shank of bronze tablet-----	799.213
Eton, 2 miles south of, 600 feet south of bridge over Louisville & Nashville R. R., on southwest corner of concrete culvert; chiseled square marked "B. M. 740"-----	739.50
Eton, 1 mile south of, west of track, on west end of culvert; chiseled square marked "B. M. 718"-----	718.16
Eton, 0.5 mile north of, east end of concrete culvert of Louisville & Nashville R. R.; aluminum tablet stamped "754"-----	753.930

## TALKING ROCK QUADRANGLE.

[Latitude 34° 30'-34° 45'; longitude 84° 30'-84° 45'.]

From point near Chatsworth along Louisville &amp; Nashville R. R. southeast to Carters, thence south to Ranger.

Chatsworth, 4.2 miles south of, 50 feet northwest of road crossing, in telephone pole; spike, painted "U. S. B. M. 751"-----	750.99
Ramhurst, in front of station; top of west rail-----	766.89
Ramhurst, west end of north abutment of railroad bridge over Rock Creek; bronze tablet stamped "763"-----	762.817
Ramhurst, 1.4 miles south of, west end of south abutment of trestle over the Federal road; chiseled square, painted "U. S. 749"-----	749.60
Ramhurst, 2.6 miles south of, east end of north abutment of trestle; chiseled square, painted "U. S. 712"-----	711.95
Coniston, 100 feet north of station, 50 feet west of track, in limestone outcrop; bronze tablet stamped "705"-----	705.046
Coniston, in front of station; top of east rail-----	705.7

	Feet.
Coniston, 1.4 miles south of, 50 feet northwest of road crossing, in telephone pole; spike, painted "U. S. 693"-----	693.20
Coniston, 2.7 miles south of, west end of south abutment of railroad bridge over the Coosawattee River; chiseled square, painted "693.8"-----	694.05
Coniston, 2.7 miles south of, east end of south abutment of railroad bridge over the Coosawattee River; bronze tablet stamped "694"-----	694.074
Oakman, 1.7 miles north of, in top of northeast corner of concrete undergrade bridge; bronze tablet stamped "715"-----	714.878
Oakman, 0.3 mile north of, on top of northeast corner of concrete undergrade bridge; bronze tablet marked "738.8 B. M."-----	739.00
Oakman, Louisville & Nashville R. R. station, opposite; top of rail-----	735.2
Oakman, 0.8 mile south of, on north end of west concrete head to culvert over small stream; chiseled square, marked "728.1 B. M."-----	728.34
Ranger, 2.9 miles north of, 12 feet west of Louisville & Nashville R. R. in south end of west concrete head to culvert over small stream; bronze tablet stamped "760"-----	759.971
Ranger, 1.6 miles north of, on north end of west concrete culvert head; chiseled square, marked "759.8 B. M."-----	759.93
Ranger, 0.3 mile north of, 60 feet north of milepost 398, on north end of east concrete culvert head; chisel mark, marked "741.8 B. M."-----	741.96
Ranger, opposite Louisville & Nashville R. R. station; top of rail-----	749.3

**From Carters northeast along highway to point near Ellijay.**

Carters, 1.1 miles north of, 25 feet south of forks of roads, in root of tree; copper nail with washer-----	714.17
Carters, 2.4 miles northeast of, 0.6 mile east of the Federal road, on road to Ellijay, south side of, on ledge; chiseled square, painted "U. S. 876"-----	875.69
Carters, 3.5 miles northeast of, south side of road, in outcrop; bronze tablet stamped "1148"-----	1,147.762
Carters, 4.8 miles northeast of, at forks of roads, in root of tree; copper nail with washer-----	1,372.62
Tails creek, 3.7 miles southwest of post office, 50 feet southwest of the intersection of the "Spring Place-Ellijay" road, and the road to Carters, in root of tree; copper nail with washer-----	1,218.38
Tails creek, 2.5 miles southwest of post office, 400 feet west of forks of roads, north side of road, in outcrop; bronze tablet stamped "1299"-----	1,298.986
Tails creek, 1.3 miles southwest of post office, west side of road, on outcrop; chiseled square, painted "U. S. B. M. 1375"-----	1,374.98
Tails creek, 250 feet north of post office, east side of road, in root of tree; copper nail with washer, stamped "U. S. G. S. B. M."-----	1,407.04
Tails creek, 1.1 miles east of post office, south side of road, in root of stump; copper nail with washer, stamped "U. S. G. S. B. M."-----	1,484.02
Tails creek, 1.4 miles east of post office, 60 feet west of Tails creek, north side of road, on ledge; chiseled square, painted "U. S. 1345"-----	1,345.32
Tails creek, 1.4 miles east of post office, 30 feet west of ford of Trails creek, in center of creek, in ledge; bronze tablet stamped "1337"-----	1,337.086
Tails creek, 3 miles east of post office, 50 feet east of Elder's store, north side of road, on outcrop; chiseled square, painted "U.S.B.M. 1467"-----	1,466.65

Tails creek, 4.3 miles east of post office, about 0.5 mile west of Roosevelt post office at forks of roads, on outcrop; chiseled square, painted "U.S. 1516.5"-----	Feet. 1, 516. 35
Roosevelt, 0.3 mile north of post office, 200 feet southeast of church, in northeast corner of road fork, in base of black-oak tree; copper nail, marked "1453.3 B.M."-----	1, 454. 82
Roosevelt, 1.1 miles east of post office, 7 feet north of highway, on sandstone ledge; chiseled square, marked "1329.1 B.M."-----	1, 330. 53
Roosevelt, 2.3 miles east of post office, 120 feet east of road fork, 10 feet south of highway, in quartz ledge; bronze tablet stamped "1498"-----	1, 499. 826
Ellijay, 2.1 miles west of, 20 feet south of highway, 10 feet east of corner fence post, in root of black-oak tree; copper nail, marked "1650.7 B.M."-----	1, 649. 16
From point near Roosevelt northwest along highway to Ollie.	
Roosevelt, 1 mile north of post office, 120 feet north of road fork, 5 feet east of highway, in quartz ledge; bronze tablet stamped "1564"-----	1, 565. 339
Roosevelt, 1.8 miles north of post office, 220 feet west of road fork, 7 feet south of highway, in root of large oak tree; nail marked "1587.8 B.M."-----	1, 589. 31
Roosevelt, 2.9 miles north of post office, 40 feet east of road fork, 8 feet north of highway; chiseled square on sandstone ledge, marked "1407.4 B.M."-----	1, 408. 85
Roosevelt, 3.7 miles north of post office, 100 feet east of road fork, 8 feet north of highway, in sandstone ledge; bronze tablet stamped "1360"-----	1, 361. 401
Ollie, 2 miles south of post office, 7 feet north of angle in highway; chiseled square on sandstone ledge, marked "1447.8 B.M."-----	1, 450. 32
Ollie, 0.9 mile south of post office, 180 feet east of stream crossing, 15 feet north of highway, in root of black-oak tree; copper nail, marked "1485.2 B.M."-----	1, 487. 69
Ollie, 35 feet east of post-office building and store, 40 feet northeast of road fork, in sandstone ledge; bronze tablet stamped "1506"-----	1, 507. 388
From point near Carters along highway southeast to Talking Rock, thence north along Louisville & Nashville R. R. to Tioga.	
Carters, 1.5 miles southeast of, 20 feet north of highway; top of marble land monument inscribed 24-D and 2-S on south side; marked "703.3 B.M."-----	703. 55
Carters, 3.1 miles southeast of, 12 feet southwest of road fork, in base of oak tree; copper nail marked "699.3 B.M."-----	699. 50
Carters, 3.9 miles southeast of, 10 feet north of highway, 15 feet north of stream, in sandstone ledge; bronze tablet stamped "764"-----	764. 258
Carters, 5.5 miles southeast of, 120 feet west of road fork, 20 feet north of highway; copper nail in root of oak tree, marked "1137.8 B.M."-----	1, 138. 02
Carters, 6.8 miles southeast of, 50 feet east of small stream, 7 feet north of highway; chisel mark on sandstone ledge, marked "1000.1 B.M."-----	1, 000. 42
Carters, 8.1 miles southeast of, 0.4 mile west of Franklin Pierce residence, 5 feet north of highway, in sandstone ledge; bronze tablet stamped "1046"-----	1, 046. 160

	Feet.
Blaine, 3.4 miles northwest of post office, 300 feet west of Ball Creek Church, 12 feet north of highway; copper nail in base of oak tree, marked "1164.7 B.M."-----	1, 165. 11
Blaine, 2.3 miles northwest of post office, 16 feet north of highway; copper nail in root of oak tree, marked "1185.7 B.M."-----	1, 186. 16
Blaine, 1.5 miles northwest of post office, 15 feet north of north end of highway bridge over Talking Rock Creek, in granite ledge; bronze tablet stamped "975"-----	975. 153
Blaine, in southeast corner of crossroads; copper nail in base of black-oak tree, marked "1134.4 B.M."-----	1, 134. 82
Talking Rock, 2.4 miles west of, in northwest corner of road fork; copper nail in base of telephone pole, marked "1051.4 B. M."-----	1, 051. 84
Talking Rock, 1.2 miles west of, 10 feet south of highway; copper nail in root of oak tree, marked "1072.7 B. M."-----	1, 073. 14
Talking Rock, 10 feet north of west entrance of Warlick House, 0.4 feet west of property line, in concrete sidewalk; bronze tablet stamped "1085"-----	1, 085. 345
Talking Rock, 1 mile north of, 40 feet north of milepost 424, 9 feet west of railroad; chiseled square on sandstone ledge, marked "1055.7 B.M."-----	1, 056. 15
Carns Mill, grade crossing; top of rail-----	1, 065. 8
Carns Mill, 0.2 mile north of, in west end of south wooden abutment to railroad bridge over Talona Creek; copper nail, marked "1075.0 B.M."-----	1, 070. 48
Carns Mill, 1 mile north of, 170 feet south of grade crossing, 7 feet west of Louisville & Nashville R. R., in sandstone ledge; bronze tablet stamped "1089"-----	1, 089. 339
Whitestone, opposite Louisville & Nashville R. R. station; top of rail-----	1, 106. 6
Whitestone, 0.1 mile north of, 30 feet west of Louisville & Nashville R. R.; copper nail in base of telegraph pole, marked "1108.8 B.M."-----	1, 109. 16
Whitestone, 1 mile north of, 50 feet south of grade crossing, 30 feet west of Louisville & Nashville R. R.; copper nail in base of telegraph pole, marked "1132.4 B. M."-----	1, 132. 86
Talona, 0.5 mile south of, on wooden bridge 102; copper nail in top of west end of south abutment, marked "1154.9 B.M."-----	1, 155. 40
Talona, 65 feet southeast of grade crossing, 35 feet southwest of store building, in sandstone ledge; bronze tablet, stamped "1166"-----	1, 166. 241
Tioga, 0.2 mile south of, on wooden bridge 101; copper nail in top of west end of south abutment, marked "1188.3 B.M."-----	1, 188. 80

## WALESKA QUADRANGLE.

[Latitude 34° 15'-34° 30'; longitude 84° 30'-84° 45'.]

From Fairmount north along Louisville &amp; Nashville R. R. to Ranger.

Fairmount, in south side of west end of Bank of Fairmount, 300 feet north of crossroads; aluminum tablet stamped "757 Adj. 1903"-----	757. 557
Fairmount, 1.1 miles north of, 200 feet north of grade crossing, 12 feet west of Louisville & Nashville R. R.; chiseled square on limestone ledge, marked "737 B. M."-----	727. 16
Fairmount, 2.4 miles north of, in top of north end of west concrete culvert head, 14 feet west of Louisville & Nashville R. R.; chiseled square, marked "728.5 B. M."-----	718. 58
Ranger, 1.3 miles south of, 15 feet west of Louisville & Nashville R. R., in top of north end of concrete culvert head; bronze tablet stamped "717"-----	717. 498

Acworth, Adairsville, Stilesboro, and Waleska quadrangles.

**BARTOW, CHEROKEE, COBB, GORDON, PAULDING, AND PICKENS COUNTIES.**

The elevations in the following list were determined by extensions from Rockmart and Brasswell on the precise-level line along the Southern Railway. The leveling was done as follows: In Acworth, Adairsville, Stilesboro, and Waleska quadrangles in 1903 by B. J. Green and in 1905 by W. R. Winstead; in Acworth and Stilesboro quadrangles in 1906 by H. W. Hills.

**STILESBORO QUADRANGLE.**

[Latitude 34°-34° 15'; longitude 84° 45'-85°.]

**From Stilesboro south to Brasswell.**

Stilesboro, 3.8 miles southwest of, 5 yards northeast of road forks, 100 yards west of house on Brasswell road; iron post stamped "727 Adj. 1906"-----	Feet. 726.995
Stilesboro, 7.65 miles southwest of, on Brasswell road, 5 yards northeast of road fork east; iron post stamped "1101 Adj. 1906"-----	1,100.976

**From Acworth southwest to Brasswell.<sup>1</sup>**

Acworth, 6.5 miles southwest of, 0.5 mile south of Crowville, 10 yards north of road forks; iron post stamped "979 Adj. 1906"-----	980.242
Acworth, 10.25 miles southwest of, 3.25 miles south of Crowville, 14 miles from Yorkville, southwest of road at forks, iron post stamped "1031 Adj. 1906"-----	1,032.580
Acworth, 14.5 miles southwest of, 12 miles south of Cartersville, on main Cartersville-Dallas road, at Huntsville settlement, on Burnt Hickory Ridge, in triangle plot west of road at intersection with Stilesboro road; iron post stamped "1059 Adj. 1906"-----	1,059.800
Acworth, 18 miles southwest of, on Brasswell road at intersection with Stilesboro road, in triangular plot southwest of road; iron post stamped "844 Adj. 1906"-----	885.196

**From Rockmart along Seaboard Air Line Ry. to Cartersville.**

Stilesboro, 400 feet northwest of station, at southwest corner of foundation of M. E. Church; aluminum tablet stamped "741 Adj. 1903"-----	741.205
Cartersville, 4.4 miles west of; in northeast corner of east abutment of bridge over Etowah River; aluminum tablet stamped "680 Adj. 1903"-----	680.489
Cartersville, main entrance to courthouse, on top of coping of west wing wall; bronze tablet stamped "787 Atlanta"-----	786.690

**From Cartersville southeast along highways to Emerson.**

Emerson, 500 feet north of station, at north end of west side of railroad culvert; chiseled square-----	824.39
<b>From Cartersville northwest along railroad to Cassville, thence west along highway to Kingston.</b>	
Rogers, in northeast corner of Mr. Hay's yard, 60 feet east of railroad; iron post stamped "727 Adj. 1903"-----	726.918
Cass, 300 feet southeast of station; top of west rail of main track----	750.8

<sup>1</sup>The error in this line (-1.247) is excessive; an arbitrary adjustment of 1 foot was made at first part of line.

Cassville, 0.4 mile south of, southeast angle of road forks, northeast corner of Baptist Church yard; iron post stamped "821 Adj. 1903"	Feet. 820. 791
Cassville, 3.2 miles west of, opposite road fork to north, 10 feet south of road, in front of small house; iron post stamped "752 Adj. 1903"	752. 134
Kingston, south rail of main line of Nashville, Chattanooga & St. Louis Ry., in front of station	697. 5
Kingston, 600 feet west of station, in southwest corner of front face of Southern Bell Telephone & Telegraph Co. exchange; aluminum tablet stamped "699 Adj. 1903"	698. 594

#### ADAIRSVILLE QUADRANGLE.

[Latitude 34° 15'–34° 30'; longitude 84° 45'–85°.]

From Kingston north to Fergusson crossroads.

Cement, 125 feet north of switch, at second-class road crossing; top of west rail	672. 0
Cement, 30 feet north of mail rack, in northwest corner of west abutment of railroad culvert; aluminum tablet stamped "672 Adj. 1903"	672. 104
Halls, 150 feet north of station; top of west rail of main track	773. 6
Halls, 1,250 feet north of station, in northwest corner of west abutment of railroad culvert; aluminum tablet stamped "778 Adj. 1903"	777. 941
Adairsville, in north front face of hotel Midway, 8 feet east of main entrance; aluminum tablet stamped "713 Adj. 1903"	713. 365
Adairsville, 2.3 miles north of, 200 feet north of small stream, 100 feet north of road fork to east, 100 feet west of two houses, 600 feet west of Mart King's house, 20 feet east of road, in top of large rock; aluminum tablet stamped "673 Adj. 1903"	673. 294

From Fergusson crossroads east 3 miles, thence south to Cassville.

Fergusson crossroads, in south chimney of Mr. Fergusson's house; aluminum tablet stamped "682 Adj. 1903"	682. 156
Fergusson crossroads, 3.1 miles east of, in southeast angle of road forks; iron post stamped "813 Adj. 1903"	813. 377
Folsom, in front of white house, 10 feet south of road, in southwest angle of road forks; iron post stamped "802 Adj. 1903"	802. 722
Folsom, 3.2 miles south of, 107 feet south of Green schoolhouse, 250 feet north of J. M. Green's house, 10 feet west of road, in top of large rock; aluminum tablet stamped "909 Adj. 1903"	908. 840
Cassville, 4 miles north of, 400 feet north of Oakdale schoolhouse, top of hill at second-class crossroads, 5 feet south of mail box; iron post stamped "903 Adj. 1903"	903. 383

From point east of Fergusson crossroads north to Farmville, thence east to Fairmount.

Farmville, in south side of west chimney of G. W. Stewart's house; aluminum tablet stamped "735 Adj. 1903"	735. 383
Sonora, southeast angle of crossroads, top of hill, in northwest corner of yard; iron post stamped "731 Adj. 1903"	730. 939
Sonora, 3.2 miles east of, 100 feet north of small stream, 60 feet northwest of spring at road fork to left; iron post stamped "729 Adj. 1903"	728. 781



## ACWORTH QUADRANGLE.

[Latitude 34°-34° 15; longitude 84° 30'-84° 45'.]

From Emerson southeast via Allatoona and north via Webster Ferry to Corbin.

	Feet.
Allatoona, Nashville, Chattanooga & St. Louis Ry. water tank, on top of east foundation pier; bronze tablet stamped "866 Atlanta"-----	865.877
Corbin, at road intersection; iron post stamped "1046 Atlanta"-----	1,045.855

From Sutallee southeast to Woodstock, thence west to Acworth, thence northwest to Allatoona.

Sutallee, in southeast angle of crossroads, opposite store; iron post stamped "1110 Adj. 1903"-----	1,110.271
Etowah River, in large rock at south end of steel bridge; aluminum tablet stamped "822 Adj. 1903"-----	821.865
Woodstock, 6.5 miles northwest of, 0.4 mile south of Putnam ford, in large rock 6 feet west of road; aluminum tablet stamped "836 Adj. 1903"-----	835.983
Woodstock, 200 feet south of station, in south wall of building belonging to Perkinson, McAfee & Latimer, 21 inches west of southeast corner; aluminum tablet stamped "967 Adj. 1903"-----	967.549
Woodstock, 3.7 miles southwest of, at foot of hill 600 feet east of Noonday Creek Bridge, 8 feet north of road, in large rock; aluminum tablet stamped "899 Adj. 1903"-----	899.291
Acworth, 2.9 miles east of, 0.3 mile southeast of Nashville, Chattanooga & St. Louis Ry. milepost C. 106 A. 32, in center of west abutment of culvert over small stream; aluminum tablet stamped "972 Adj. 1903"-----	972.471
Acworth, 100 feet south of west end of station, at northeast corner of drug store; aluminum tablet stamped "912 Adj. 1903"-----	911.765
Acworth, 4 miles north of, in northeast corner of north abutment of railroad bridge 375 over Allatoona Creek; aluminum tablet stamped "862 Adj. 1903"-----	862.180
Allatoona, 300 feet north of station, in southeast corner of northeast pier of water tank; bronze tablet stamped "866 Atlanta"-----	865.877

From Acworth southwest to Brasswell (part of line).

Acworth, 3.25 miles southwest of, at intersection of Crowville and Roxana roads, 20 yards south of house of E. W. Brooks; iron post stamped "933 Adj. 1906"-----	934.008
--	---------

## WALESKA QUADRANGLE.

[Latitude 34° 15'-34° 30'; longitude 84° 30'-84° 45'.]

From Corbin, northwest to White, thence southwest to Cartersville.

White, at northeast corner outside of J. E. White's yard; iron post stamped "841 Atlanta"-----	841.603
--	---------

From White north along highway via Pine Log to Fairmount.

Pine Log, in dwelling yard of William Roberts, north side of gate; iron post stamped "870 Atlanta"-----	869.751
Fairmount, 5.3 miles south of, northeast angle of road forks, in north side of large rock; aluminum tablet stamped "823 Adj. 1903"-----	823.439

Fairmount, in south side of west end of bank of Fairmount, 300 feet north of crossroads; aluminum tablet stamped "757 Adj. 1903"-----	Feet. 757.557
Fairmount, 2 miles west of, 100 feet south of house to left, in large rock; aluminum tablet stamped "707 Adj. 1903"-----	707.529
From Fairmount east along highway to Jerusalem, thence to Sutallee.	
Fairmount, 3.6 miles northeast of, at top of hill, 20 feet north of road, in large soapstone; aluminum tablet stamped "1061 Adj. 1903"---	1,060.970
Jerusalem, northwest corner of church; aluminum tablet stamped "1216 Adj. 1903"-----	1,216.645
Jerusalem, 3.75 miles south of, northwest angle of road forks, 30 feet west of old courthouse, 4 feet west of sycamore tree; iron post stamped "971 Adj. 1903"-----	971.589
Waleska, 2.9 miles north of, opposite road fork to northwest, 15 feet east of road; iron post stamped "1115 Adj. 1903"-----	1,115.088
Waleska, in second pillar at west side of south side of chapel of Reinhardt Military College; aluminum tablet stamped "1153 Adj. 1903"---	1,153.543
Waleska, 3.6 miles south of, at south angle of old road fork to south-east, top of hill; iron post stamped "1122 Adj. 1903"-----	1,120.900
Moore's Mills, 780 feet west of former post office, east of Shoal Creek, 100 feet south of bridge, on top of large rock; aluminum tablet stamped "894 Adj. 1903"-----	894.491

## Rome and Wedowee quadrangles.

## CARROLL, CHATTOOGA, FLOYD, HEARD, POLK, AND TROUP COUNTIES.

The elevations in the following list were determined by extension from a bench mark at Rome recovered by the precise-level line from Morehead City, N. C., to Brunswick, Ga. A connection was obtained at Lagrange in Wedowee quadrangle with levels extended from McDonough and Macon, but an excessive closure error was allowed to stand because there were not sufficient data to effect a reliable readjustment.

The leveling in Rome quadrangle was done in 1896 by J. A. McDonough; in Wedowee quadrangle in 1899 by W. S. D. Moore. The standard bench marks set in 1896 in Rome quadrangle, based on a railroad elevation at Rome, are stamped with figures of elevation mostly 15 feet too high.

## ROME QUADRANGLE.

[Latitude 34°-34° 30'; longitude 85°-85° 30'.]

## At Rome.

Rome, Second Avenue Bridge crossing Oostanaula River; zero of gage established by U. S. Engineer Corps (Engineer Corps old elevation 576.41)-----	Feet. 561.47
Rome, in coping of steps on north side of post-office building; bronze tablet stamped "627"-----	612.623
East Rome, in front of station; top of rail-----	609.5
From Rome northwest along highway via Crystal Springs to Summerville.	
Rome, 3.5 miles north of, in W. L. Aycock's front yard, 100 feet south of his blacksmith shop, on east side of road at road forks; iron post stamped "636"-----	621.042

Armuchee, John W. Selman's front yard, 20 feet southeast of house; iron post stamped "632"-----	Feet. 617. 213
Kartah, northwest corner of J. M. Kendrick's front yard; iron post stamped "702"-----	687. 171
Summerville, at southeast corner of county courthouse; bronze tablet stamped "668"-----	653. 077
<b>From Rome west along Central of Georgia Ry. to Lavender, thence northeast along highway to Crystal Springs.</b>	
Lavender, near station and west of schoolhouse, east side of J. F. Maple's yard, near front gate; iron post stamped "697"-----	682. 765
Fouche, in southwest corner of front yard of G. W. Milum; iron post stamped "742"-----	726. 626
Crystal Springs, 1 mile south of, at crossing of Texas Valley road and road across Lavender Mountain from Crystal Springs to Rome, in east side of W. T. Freeman's front yard; iron post stamped "660"-----	665. 491
<b>From Lavender north along Central of Georgia Ry. via Holland's store to Summerville.</b>	
Tulip (post office at Sprite switch), west side of gate in J. P. Bonshillon's front yard; iron post stamped "710"-----	694. 862
Lyerly, northwest corner of A. McLeod's front yard, on main Summerville road; iron post stamped "658"-----	642. 607
<b>From Summerville west along highway to Alpine.</b>	
Raccoon Creek Ford, 0.5 mile west of, at crossroad; iron post stamped "681"-----	666. 130
Alpine, in southwest angle of crossroads, 75 feet from large oak tree; iron post stamped "783"-----	768. 588
<b>From Forney, Ala., east to Cave Spring.</b>	
Cave Spring, 1.5 miles west of, 100 feet west of branch, between Lumpkin's house and graveyard, in limestone ledge north of road; copper bolt stamped "694"-----	679. 390
<b>From Rome along highway south and west via Sixmile and Briscoe to Cave Spring, thence north to Lavender.</b>	
Sixmile, in D. B. Sanders's front yard, north of house, near fence; iron post stamped "713"-----	698. 477
Sixmile, 4 miles south of, on Rome-Cedartown road, in front of J. F. Anglin's house; iron post stamped "858"-----	843. 107
Cedartown, 3 miles northeast of, on middle Rome road, in Mrs. M. E. Lawson's yard; iron post stamped "907"-----	892. 470
Cave Spring, 5.5 miles southeast of, in R. A. Ray's front yard, between corner of house and corner of yard on east; iron post stamped "770"-----	755. 326
Cave Spring, Deaf and Dumb Institute, in wall near corner stone of building, 1.3 feet above outer brick of trimming course; bronze tablet stamped "664"-----	649. 742
Foster Mills, 0.8 mile north of, 300 feet north of summit of hill, in rock on east side of road; copper bolt stamped "630 U. S. G. S."-----	615. 224

From Livingston west to Anniedelle (single spur line).

Anniedelle, 3.5 miles west of Livingston, in corner of yard of Sanford's house; iron post stamped "610"-----	Feet. 595.134
--	------------------

WEDOWEE QUADRANGLE.

[Latitude 33°-33° 30'; longitude 85°-85° 30'.]

From Finley, Ala., along highway to Antioch, thence via McGee Bridge to Lagrange.

Antioch, in southeast angle of crossroads; iron post stamped "744 Anniston"-----	743.710
McGee Bridge, in south pier of bridge over Chattahoochee River, in west face of southwest corner; bronze tablet stamped "591 Anniston"-----	590.680
Lagrange, in north face of new county courthouse, in coping of foundation; aluminum tablet-----	788.797

From Lagrange north along highway via Franklin to Roopville, thence west to Graham.

Wares, in northwest angle of crossroads; iron post stamped "751 Anniston"-----	750.608
Philpots Ferry, 1.2 miles north of, 50 feet northeast of east end of bridge over New River; iron post stamped "625 Anniston"-----	624.783
Franklin, in east face of northeast corner of county court-house; aluminum tablet stamped "695 Anniston"-----	694.742
Franklin, 3.2 miles southwest of, at Hillabahatchee Creek, 2 feet west of south end of bridge; iron post stamped "637 Anniston"-----	636.852
Franklin, 3 miles north of, at Humphrey's mill, 2 feet east of north end of bridge over Centralhatchee Creek; iron post stamped "648 Anniston"-----	647.514
Centralhatchee, 2 miles southeast of, at junction of road from Centralhatchee with Five Notch road; iron post stamped "672 Anniston"-----	671.134
Centralhatchee, in forks of road opposite cotton gin; iron post stamped "848 Anniston"-----	847.941
Roopville, on east side of street, 200 feet south of road leading west; iron post stamped "1253 Anniston"-----	1,252.671
Graham, 2.5 miles northeast of, at junction of McIntosh road with Bowdon-Wedowee road; iron post stamped "961 Anniston"-----	960.634

From Roopville east 3 miles to Star Point schoolhouse (spur line).

Star Point schoolhouse, 300 feet south of, in angle of crossroads; iron post stamped "1074 Anniston"-----	1,073.274
---	-----------

Columbus, Fayetteville, Fort Valley, Macon, McDonough, Opelika, Paschal, Reynolds, Talbotton, Tobesofkee, and Zebulon quadrangles.

BIBB, CHATTAHOOCHEE, CRAWFORD, HARRIS, HENRY, HOUSTON, MERIWETHER, MUSCOGEE, PIKE, SPALDING, TALBOT, TAYLOR, AND TROUP COUNTIES.

The elevations in the following list were determined by extensions from Macon and McDonough on the precise-level line from Atlanta

to Brunswick. The leveling was done as follows: In Talbotton quadrangle in 1905 by Carroll Caldwell, W. N. Franklin, and F. L. Foust; in Fayetteville, McDonough, Zebulon, and Opelika quadrangles in 1905 by Foust; in Paschal, Reynolds, Fort Valley, and Macon quadrangles in 1905 by Caldwell; and in Columbus quadrangle in 1905 by Caldwell, and in 1907 by J. B. Metcalfe, jr.

## MCDONOUGH QUADRANGLE.

[Latitude 33° 15'–33° 30'; longitude 84°–84° 15'.]

From McDonough southwest along Southern Ry. to Towalaga.

McDonough, in granite footstone of stone arch, at right of main entrance to county courthouse; aluminum tablet stamped "866 Moorhead, 1898"-----	Feet. 865.441
McDonough, 3.9 miles south of, 600 feet north of milepost 185, in south chimney of residence of S. G. Gardiner; aluminum tablet stamped "883 Adj. 1903"-----	882.897
Greenwood, 25 feet west of main track, in south brick foundation of station; aluminum tablet stamped "859 Adj. 1903"-----	859.018
Luella, in front of station; top of rail-----	859.9
Luella 100 feet west of station, 200 feet south of post office, in southeast corner of Bailey's brick warehouse; aluminum tablet stamped "866 Adj. 1903"-----	865.652
Towalaga, in front of station; top of east rail-----	742.8
Towalaga, 0.7 mile south of, 200 feet south of milepost 11, 1,000 feet south of house on hill, in southeast corner of culvert; aluminum tablet stamped "712 Adj. 1903"-----	712.534

## FAYETTEVILLE QUADRANGLE.

[Latitude 33° 15'–33° 30'; longitude 84° 15'–84° 30'.]

At Experiment.

Experiment, in front of station; main track, top of east rail-----	941.6
Experiment, 350 feet west of station, 50 feet west of post office, in small brick monument; aluminum tablet stamped "946 Adj. 1903"-----	946.205

## ZEBULON QUADRANGLE.

[Latitude 33°–33° 15'; longitude 84° 45'–85°.]

From Griffin along Southern Ry. to Molena.

Griffin, in front of station; top of rail-----	961.9
Griffin, in front face at northwest corner of county courthouse; aluminum tablet stamped "969 Adj. 1903"-----	969.373
Rover, 600 feet northeast of station, 300 feet west of railway, in east chimney of G. C. Gaisert's house; aluminum tablet stamped "977 Adj. 1903"-----	977.460
Rover, in front of station, main track; top of west rail-----	972.4

Williamson, 275 feet east of Southern Ry., northwest of railway crossing, in south chimney of residence of J. M. Thompson; aluminum tablet stamped "922 Adj. 1903"-----	Feet. 921.727
Reidsboro, in front of station, main track; top of east rail-----	903.3
Jolly, 300 feet northeast of station, 200 feet northeast of post office, in granite foundation of south chimney of small house of R. U. Hale; aluminum tablet stamped "881 Adj. 1903"-----	881.498
Concord, 250 feet east of station, 300 feet east of post office, at crossing of county road and main street, at southwest corner of Dr. Mallory's drug store; aluminum tablet stamped "815 Adj. 1903"-----	815.366
Neal, in front of station; top of west rail-----	813.5
Neal, 200 feet west of station, 200 feet north of post office, in foundation of chimney of residence of G. J. Williamson; aluminum tablet stamped "819 Adj. 1903"-----	819.279
Molena, 300 feet northeast of station, 100 feet east of railway, in southwest corner of Molena warehouse; aluminum tablet stamped "776 Adj. 1903"-----	776.603

#### TALBOTTON QUADRANGLE.

[Latitude 32° 30'–33°; longitude 84° 30'–85°.]

##### From Molena southwest along Southern Ry. to Ellerslie.

Molena, 2.3 miles south of, southeast pedestal of bridge over Flint River; aluminum tablet stamped "679 Adj. 1903"-----	679.569
Woodbury, 0.3 mile south of station, at road crossing; iron post stamped "780 Adj. 1903"-----	780.480
Raleigh, in front of station; top of rail-----	754.4
Bullochville, in north wall of brick storehouse of B. F. Bulloch, post-office building; aluminum tablet-----	929.664
Nebula, in front of station; top of rail-----	1,026.4
Shiloh, in first pillar east of southwest corner pillar under platform to station; aluminum tablet-----	905.523
Oak Mountain station (Cleola post office), 75 feet west of railroad, 100 feet southwest of station; iron post stamped "Prim. Trav. Sta. No. 11"-----	675.985
Waverly Hall, in east edge of north wall of large brick storehouse, occupied by I. H. Pitts & Bro.; aluminum tablet-----	728.897
Ellerslie, 30 feet north of stone house of R. F. Carter & Son, 10 feet west of public highway, 100 feet east of station; iron post-----	716.160

##### From Woodsbury west along Macon & Birmingham Ry. to Harris.

Snelson, road crossing at flag station; top of rail-----	864.9
Snelson, 0.5 mile west of crossing, 10 feet south of track, on embankment in cut, large boulder; aluminum tablet-----	889.273
Harris, in northwest corner of intersection of the Macon & Birmingham and the Central of Georgia railroads; iron post-----	884.004
Harris, grade crossing of railroad; top of rail-----	884.0

##### From Harris southwest along Central of Georgia Ry. to Columbus.

Crowders flag station, at road crossing; top of east rail-----	937.6
Stinson, in pillar under south side of passenger station; aluminum tablet-----	859.827

White Sulphur Springs, in Hotel Meriwether, in west chimney; aluminum tablet.....	Feet. 789.600
Cameo, in foundation to section house in northwest corner of road crossing; aluminum tablet.....	831.125
Chipley, 100 feet south of station, northeast corner of court to Commercial Hotel; iron post.....	922.469
Tiptop, in northeast corner of yard to residence of R. M. Wall, on south side of highway 75 feet west of track; iron post.....	1,036.973
Hamilton, north side of public square, 200 feet north of courthouse, 50 feet southwest of west edge of Robertson Hotel, 200 feet east of railroad crossing; iron post stamped "778 Adj. 1903".....	777.395
Kingsboro, just north of switch; top of east rail at road crossing....	605.9
Cataula, 4 miles north of, in north pier of railroad bridge over Mulberry Creek; aluminum tablet stamped "562 Adj. 1903".....	561.737
Cataula, 10 feet south of station; top of east rail.....	692.7
Cataula, 200 feet southeast of station, 175 feet south of post office, 5 feet northwest of house of J. W. Thompson; iron post stamped "700 Adj. 1903".....	699.454
Mobley, 200 feet north of switch stand; top of east rail.....	654.4
Fortson, 75 feet south of station, 15 feet east of Fortson's store, 100 feet west of track, 50 feet south of highway, 2 feet south of plank fence; iron post stamped "519 Adj. 1903".....	518.842
Nankipoo, 40 feet west of track, 10 feet east of southeast corner of small storehouse; iron post stamped "504 Adj. 1903".....	504.138

**From Paschal west along Central of Georgia Ry. to Schatulga.**

Geneva, in chimney in west side of hotel called Morris House; aluminum tablet stamped "581 Adj. 1903".....	580.757
Juniper, in brick wall at rear of station; aluminum tablet stamped "422 Adj. 1903".....	421.380
Box Springs, in foundation 3 feet to right of signal window, near entrance; aluminum tablet stamped "364 Adj. 1903".....	363.940
Box Springs, 3 miles southwest of, in top of culvert south of track; aluminum tablet stamped "366 Adj. 1903".....	366.214
Upatoi, in south corner of station, in brick foundation; aluminum tablet stamped "418 Adj. 1903".....	417.812
Upatoi, 3 miles southwest of, on top of small culvert south of track; aluminum tablet stamped "430 Adj. 1903".....	429.558
Commonwealth, 2.9 miles southwest of, at road crossing 20 feet north of track, 30 feet east of road; iron post stamped "Prim. Trav. Sta. No. 2, 346 Adj. 1903".....	345.373

**From Cataula east along highways via Eilerslie and Baughville to Talbotton, thence southeast along railroad to Paschal.**

Eilerslie, 5.3 miles east of, north edge of road, opposite small white dwelling occupied by D. U. Biggs; iron post.....	749.649
Newry (former post office), in southwest corner of yard at Hendrick residence north of road; iron post.....	828.158

**OPELIKA QUADRANGLE.**

[Latitude 32° 30'-33°; longitude 85°-85° 30'.]

**From Newry to Lagrange.**

Lagrange, 4 miles southeast of, at southwest abutment of bridge over Long Cane Creek; aluminum tablet.....	659.430
--	---------

From Mountain Hill north along highway to Jones Crossroads, thence northwest to Gabbettville, thence northeast to Lagrange.

Mountain Hill, 1.2 miles north of, on long hill, 50 feet north of road, in front face of south chimney of J. W. Cline's residence; aluminum tablet stamped "779 Adj. 1903"-----	Feet. 778. 892
Whitesville, 200 feet south of former post office, 50 feet west of store at crossroads; iron post stamped "735 Adj. 1903. Prim. Trav. Sta. No. 13"-----	734. 381
Jones Crossroads, 750 feet south of former Paulina post office, at foot of short hill, at road forks, 100 feet east of road, in chimney of H. P. Studivant's house; aluminum tablet stamped "801 Adj. 1903"-----	800. 228
Janes Crossroads, 3 miles northwest of Alfred's bridge over Flat Shoal Creek, in southeast corner of east pedestal; aluminum tablet stamped "613 Adj. 1903"-----	612. 289
Gabbettville, 100 feet south of station, 100 feet east of post office, in front face of brick warehouse; aluminum tablet stamped "606 Adj. 1903"-----	605. 417
Cannonville, 3.3 miles northeast of, 700 feet north of highway crossing, in southeast culvert over small stream; aluminum tablet stamped "648 Adj. 1903"-----	647. 426

From Mountain Hill south along highways (double-rodged spur line).

Mountain Hill, 3.1 miles south of, 200 feet north of road forks, in north chimney of residence of I. U. Nicks; aluminum tablet stamped "566 Adj. 1903"-----	565. 289
Mountain Hill, 7 miles south of, in northeast corner of north abutment of covered bridge over Mulberry Creek; tablet stamped "490 Adj. 1903"-----	489. 217

From Gabbettville southwest to West Point.

West Point, west end of Western Ry. of Alabama bridge over Chatahoochee River, on north end of granite pier; bronze tablet stamped "573 Anniston"-----	573. 423
West Point, in northwest corner of freight station, in twelfth layer of brick from bottom, 1.6 feet south of north end; aluminum tablet stamped "570 Adj. 1903"-----	570. 503
Baughville, in flat edge of rock under stone chimney to H. W. Baldwin's store (former post office); aluminum tablet-----	759. 776
Baughville, 3.9 miles north of, south edge of road, 2 feet southwest of post to mail box, on property of B. F. Childre; iron post-----	660. 319
Talbotton, 10 feet north of southeast corner of courthouse; iron post---	725. 587

From Talbotton north along highways via Pleasant Hill to Bullochville.

Talbotton, 2.5 miles north of, southwest corner of abutment of bridge over Edwards Creek; bronze tablet-----	536. 084
Bellevue, at residence of J. H. Bryan, in northeast corner of yard; iron post stamped "Prim. Trav. Sta. No. 7"-----	747. 460
Bellevue, 3.2 miles northeast of, 1,000 feet west of residence of the widow Owen, in triangle at road forks to south, on rock; aluminum tablet-----	730. 650
	730. 650



Evans Chapel, 1,500 feet west of, in west chimney of Franklin Academy; aluminum tablet.....	Feet. 789.492
Chalybeate, 250 feet northwest of post office and store, at house of J. D. Nelson, east edge of road; iron post stamped "Prim. Trav. Sta. No. 9".....	791.221
From Shiloh east along public highway (spur line, checked).	
Shiloh, 2 miles east of, 200 feet east of crossroads, 15 feet north of edge of road; iron post.....	866.740
From Hamilton west and north along public roads via Copeland and Troup factory to Newry.	
Hamilton, 3.5 miles southwest of, 250 feet southeast of house of Virgil Hudson (colored), property owned by John Hudson (white); iron post.....	659.161
Hamilton, 9.5 miles west of, 0.3 mile north of five points crossroads, 10 feet off east edge of road to northeast, at summit of ridge, in rock; bronze tablet.....	853.249
Copeland, 2.6 miles northeast of, 40 feet southeast of intersection of roads, northwest of Hopewell Church; iron post.....	840.800
Smiths Mill, on Turkey Creek, 300 feet south of, in stone foundation of chimney of house of the late West Smith, occupied by W. L. Blythe; aluminum tablet.....	710.041
Troup factory (old site), 75 feet off north edge of road, 200 feet east of covered bridge over Flatshoal Creek, on embankment, large boulder; aluminum tablet.....	676.273
Ursula, 0.8 mile northeast of former post office, at junction of public roads, 40 feet off south edge of east-west road, 200 feet southwest of residence of John Smith; iron post.....	819.234

## MACON QUADRANGLE.

[Latitude 32° 45'-33°; longitude 83° 30'-83° 45'.]

From Macon south along Central of Georgia Ry. to Rutland.

Macon, post office at corner of Mulberry and Third streets, in water table at left of Mulberry Street entrance; aluminum tablet stamped "334 Morehead, 1898".....	333.942
Macon, 5.5 miles south of, in south abutment, at west corner of railroad bridge crossing Rock Creek; aluminum tablet stamped "283 Adj. 1903".....	283.291

## TOBESOFKEE QUADRANGLE.

[Latitude 32° 30'-32° 45'; longitude 83° 30'-83° 45'.]

From Rutland southwest along Central of Georgia Ry. to Echeconnee.

Rutland, road crossing at north side of station; top of rail.....	341.2
Walden, road crossing at station; top of east rail.....	368.4
Echeconnee, in north pillar of A. S. J. Taylor's store; aluminum tablet stamped "314 Adj. 1903".....	314.292

## FORT VALLEY QUADRANGLE.

[Latitude 32° 30'–32° 45'; longitude 83° 45'–84°.]

From Byron southwest along Central of Georgia Ry. to Everett.

Byron, in southwest corner of station; aluminum tablet stamped "506 Adj. 1903"-----	Feet. 505. 885
Powersville, in water tank in front of station; aluminum tablet stamped "382 Adj. 1903"-----	382. 037
Ohio siding, 1.3 miles southwest of, in top stone of rock culvert crossing Mossy Creek; aluminum tablet stamped "374 Adj. 1903"-----	374. 127
Fort Valley, in east side of Harris Hotel, 30 feet south of front entrance, 50 feet west of track; aluminum tablet stamped "524 Adj. 1903"-----	524. 010
Fort Valley, 3.3 miles southwest of, in northwest pier of section foreman's house; aluminum tablet stamped "498 Adj. 1903"-----	497. 881
Everett station, at southeast corner M. M. Sanford's store, north of track; aluminum tablet stamped "377 Adj. 1903"-----	377. 325

## REYNOLDS QUADRANGLE.

[Latitude 32° 30'–32° 45'; longitude 84°–84° 15'.]

From Everett west along Central of Georgia Ry. to Reynolds.

Everett, 3 miles southwest of, in top of northeast pier of railroad bridge over Flint River; aluminum tablet stamped "319 Adj. 1903"-----	318. 907
Reynolds station, in northeast corner of Rick Bros. store, 100 feet south of track; aluminum tablet stamped "435 Adj. 1903"-----	434. 450
Reynolds, 3.6 miles southwest of, in culvert north of track, 800 feet west of C. M. Carter's house; aluminum tablet stamped "527 Adj. 1903"-----	527. 238

## PASCHAL QUADRANGLE.

[Latitude 32° 30'–32° 45'; longitude 84° 15'–84° 30'.]

From Butler west along Central of Georgia Ry. to Paschal Junction.

Butler, at county courthouse; aluminum tablet stamped "636 Adj. 1903"-----	636. 152
Butler, 3.7 miles southwest of, in southeast end of tenant's house of Supervisor Watson's plantation, in chimney; aluminum tablet stamped "652 Adj. 1903"-----	652. 078
Howard, in northeast corner of O. T. Matthews & Co.'s store; aluminum tablet stamped "634 Adj. 1903"-----	634. 225
Paschal Junction, 100 feet east of station, primary-traverse station No. 5; iron post stamped "656 Adj. 1903"-----	655. 320

## COLUMBUS QUADRANGLE.

[Latitude 32° 15'–32° 30'; longitude 84° 45'–85°.]

From Schatulga west along Central of Georgia Ry. to Columbus.

Schatulga, 3.5 miles southwest of, south side of track, 600 feet southwest of road crossing, in brick culvert; aluminum tablet stamped "270 Adj. 1903"-----	269. 795
---	----------

Muscogee Junction, 1 mile west of, 20 feet west of road crossing, north of track; iron post stamped "Prim. Trav. Sta. No. 1, 255 Adj. 1903"-----	Feet. 255. 096
Columbus, north side of First Avenue, west entrance to post-office building, in brick wall; aluminum tablet stamped "251 Adj. 1903"-----	250. 267
Columbus, 1 mile northwest of station, east end of Central of Georgia Ry. bridge over Chattahoochee River, north of track, in third step from top of abutment; aluminum tablet stamped "255 Adj. 1903"-----	255. 175
<b>From Columbus southeast along Seaboard Air Line to Cusseta.</b>	
Columbus station, 3 miles southeast of, in southwest pillar of railroad bridge over Bulls Creek; aluminum tablet stamped "245 Adj. 1907"-----	244. 678
Esquiline flag station, in front of; top of rail-----	305. 4
Columbus, 7.75 miles east of, in southwest pillar of railroad bridge over Upatoi Creek; aluminum tablet stamped "235 Adj. 1907"-----	235. 282
Ochillee, at southwest corner of store; iron post stamped "273 Adj. 1907"-----	273. 042
Cusseta, in southeast corner of jail, south front; aluminum tablet stamped "540 Adj. 1907"-----	540. 104
<b>From point 5 miles southeast of Ochillee north along highway via Cook's mill to point near Upatoi, thence west to Central of Georgia Ry., thence southeast along latter to point 3 miles southeast of Columbus.</b>	
Halloca station, 10 feet south of where road crosses track; iron post stamped "323 Adj. 1907"-----	322. 783
Halloca, 2.8 miles north of station; on road to Upatoi via Cook's mill, at northwest corner of schoolhouse (old courthouse) yard; iron post stamped "Prim. Trav. Sta. No. 4, 1906, 486 Adj. 1907"-----	486. 369
Cook's mill, 0.6 mile northwest of, 6.95 miles north of Halloca station, on road to Upatoi, at southwest corner of church; iron post stamped "290 Adj. 1907"-----	289. 585
Halloca station, 10.3 miles north of, on road to Upatoi where Columbus road turns west, east of forks; iron post stamped "466 Adj. 1907"-----	466. 078
Columbus, 10.5 miles east of, 25 feet northeast of crossroads; iron post stamped "490 Adj. 1907"-----	490. 300
Columbus, 6 miles east of, on road to county farm, 20 feet southwest of railroad crossing; iron post stamped "272 Adj. 1907"-----	272. 013
<b>From Cusseta south and west along highway to Jamestown, thence northwest to Columbus.</b>	
Cusseta, 2.5 miles southwest of, on road to Jamestown, at road forks; iron post stamped "Prim. Trav. Sta. No. 3, 1906, 475 Adj. 1907"-----	475. 243
Jamestown, 0.25 mile north of, in southwest angle at road forks; iron post stamped "451 Adj. 1907"-----	450. 683
Jamestown, 4 miles northwest of, on road to Columbus, northeast of forks; iron post stamped "283 Adj. 1907"-----	282. 565
Jamestown, 8 miles northwest of, on road to Columbus, at southwest corner of Colman's store; iron post stamped "340 Adj. 1907"-----	339. 618
Sand Hill Springs, 7 miles south of Columbus, 2 miles north of Shack, east of road; iron post stamped "242 Adj. 1907"-----	241. 348
Columbus, 4.5 miles southeast of, on Shack-Jamestown road, northeast of forks; iron post stamped "257 Adj. 1907"-----	256. 239

Crawfordville, Eatonton, Greensboro, Jackson, Machen, Madison, Meriwether, Milledgeville, and Shoulder quadrangles.

BALDWIN, BUTTS, GREENE, JASPER, LINCOLN, McDUFFIE, MORGAN, OGLETHORPE, TALIAFERRO, WARREN, AND WILKES COUNTIES.

The elevations in the following list were determined by extension from Jackson and adjusted at Lisbon in agreement with leveling extended from Dalton. The leveling was done as follows: In Jackson, Monticello, Madison, Greensboro, and Crawfordville quadrangles in 1903 by J. A. Parker; in Eatonton, Meriwether, and Monticello quadrangles in 1906 by C. H. Semper; and in Milledgeville quadrangle in 1909 by F. W. Farnsworth. Additional leveling was done in Eatonton, Greensboro, and Milledgeville quadrangles, as well as that in Shoulder quadrangle, in 1911, by J. B. Metcalfe, jr.

#### JACKSON QUADRANGLE.

[Latitude 33° 15'–33° 30'; longitude 83° 45'–84°.]

From Jackson east along highways to Monticello (checked line).

Jackson, at right of front entrance of courthouse; bronze tablet stamped "727 MC"-----	Feet. 726.287
Concord Church, northwest corner, 1.5 feet from rock pillar; iron post stamped "657 Atlanta"-----	656.690

#### MACHEN QUADRANGLE.

[Latitude 33° 15'–33° 30'; longitude 83° 30'–83° 45'.]

From Monticello northeast along Central of Georgia Ry. to Godfrey (checked line).

Monticello, southeast end of Bethel Church, between two doors, 5 feet northwest of main entrance; iron post stamped "754 Atlanta"-----	754.151
Monticello, in east corner of courthouse, 2 feet from ground, in sandstone; aluminum tablet <sup>1</sup> stamped "689 Atlanta, 1903"-----	689.234
Machen, grade crossing of Central of Georgia Ry.; top of rail-----	622.2
Machen, 0.8 mile northeast of, 0.25 mile southwest of Shady Dale, near railway crossing, northwest corner of Providence Church; iron post stamped "626 Atlanta, 1903"-----	626.310
Godfrey, 20 feet south of railway, 1 foot west of station; iron post stamped "615 Atlanta, 1903"-----	614.764

From Willard northwest along Central of Georgia Ry. to Machen.

Willard, 1.5 miles northwest of, at railroad crossing, 120 feet south of milepost 219, 12 feet east of track; iron post stamped "590"-----	589.647
Athon siding, in front of station; top of rail-----	603.7
Athon siding, 7 feet north of track, 50 feet east of warehouse; iron post stamped "604"-----	603.562
Aikenton, in front of station; top of rail-----	635.6
Aikenton, 1.4 miles north of, 20 feet north of track at railroad crossing, east margin of highway; iron post stamped "650"-----	650.103
Machen, 0.8 mile northeast of, 0.25 mile southwest of Shady Dale, northwest corner of Providence M. E. Church, near crossing; iron post stamped "626 Atlanta, 1903"-----	626.310

<sup>1</sup> Permission was granted L. O. Benton, Aug. 5, 1908, to remove this bench mark.

## MADISON QUADRANGLE.

[Latitude 33° 30'–33° 45'; longitude 83° 15'–83° 30'.]

From Godfrey north along Central of Georgia Ry. to Madison, thence southeast along Georgia R. R. to Carey (checked line).

Madison, at northwest corner of station, in brick pillar of shed just under water table, 3 feet from ground; aluminum tablet stamped "683 Atlanta, 1903"-----	Feet. 682.567
"Buckhead, Morgan County, southeast corner, 100 feet east of intersection of Railroad and Broad streets, brick store of P. H. McWharter, northwest corner; aluminum tablet stamped "625 Atlanta"-----	625.100
Carey, 0.25 mile west of, east end of Georgia R. R. bridge over Oconee River, 10 feet south of railroad, in stone abutment; aluminum tablet stamped "445 Atlanta, 1903"-----	445.820

## MERIWETHER QUADRANGLE.

[Latitude 33°–33° 15'; longitude 83° 15'–83° 30'.]

From Milledgeville north along Central of Georgia Ry. to point near Meda.

State Farm, 2.4 miles northwest of, railroad crossing; top of rail-----	444.1
State Farm, 3.5 miles northwest of, 45 feet north of milepost 192, 50 feet west of track at east margin of highway; iron post stamped "453"-----	453.023
State Farm, 6.4 miles northwest of, 0.3 mile south of Meriwether, 25 feet east of track, at milepost 195; iron post stamped "356"-----	356.357
Meriwether, in front of station; top of rail-----	348.8
Meriwether, 2.7 miles north of, 298 feet north of milepost 198, 20 feet east of track, 10 feet south of private road crossing; iron post stamped "419"-----	419.461
Dennis, in front of station; top of rail-----	457.0
Dennis, 1 mile north of, on south side of track, 15 feet east of milepost 201; iron post stamped "464"-----	464.367

## GREENSBORO QUADRANGLE.

[Latitude 33° 30'–33° 45'; longitude 83°–83° 15'.]

From Carey east along Georgia R. R. to Robinson (checked line).

Greensboro, at road crossing; top of west rail-----	602.2
Greensboro, Main and Broad streets, southwest corner of courthouse, right of main entrance, 3.5 feet from ground; aluminum tablet stamped "650 Atlanta, 1903"-----	649.715
Union Point, 150 feet from center of bank building, between two stores, 2.5 feet above ground; aluminum tablet stamped "667 Atlanta, 1903"-----	666.848
From Greensboro southeast along highways to point 4.6 miles east of Greensboro.	
Greensboro, 0.8 mile east of, 20 feet northeast of crossroads, at top of hill; cross on rock, marked "620"-----	620.10

Greensboro, 1.6 miles east of, in southwest corner of forks of road to south; chiseled square on rock, marked "625.3"-----	Feet. 625.38
Road forks to north, in root of tree; nail, marked "523.7"-----	523.7
Greensboro, 3.5 miles east of, 150 feet north of road, 250 feet west of church, on top of large boulder; aluminum tablet stamped "609.6"---	609.652
Greensboro, 4.6 miles east of, 4 feet north of road, 30 feet west of forks to north, on north end of culvert; cross, marked "653.3"---	653.38
From point 8.4 miles north of Reads Ferry along highways to Greensboro.	
Reads Ferry, 8.4 miles north of, 25 feet north of road, at southeast corner of schoolhouse; iron post stamped "612"-----	612.085
Reads Ferry, 9.6 miles north of, about 1.5 miles southwest of Greensboro, 50 feet south of milepost 85, 6 feet south of road crossing; top joint of east rail, marked "544.3"-----	544.7
Greensboro, in southwest corner of courthouse, right of main entrance; aluminum tablet stamped "650 Atlanta, 1903"-----	649.713

## CRAWFORDVILLE QUADRANGLE.

[Latitude 33° 30'-34°; longitude 82° 30'-83°.]

From Robinson east along Georgia R. R. to Barnett, thence north to Sharon (checked line).	
Robinson, in front of station; top of rail-----	624.0
Robinson, 500 feet east of post office, at southwest corner of R. C. Monk's store; iron post stamped "626 Atlanta, 1903"-----	625.662
Crawfordville, east of main entrance of courthouse, in brick pillar 3 feet from ground; aluminum tablet stamped "617 Atlanta, 1903"---	616.827
Barnett, 200 feet west of station, 150 feet southwest of railroad, east corner of J. B. Garrett's house (Balter homestead); iron post stamped "642 Atlanta, 1903"-----	641.163
Sharon, 200 feet east of station, John O. Keeffee's store on Main Street, 50 feet from center of store, in southeast corner; aluminum tablet stamped "607 Atlanta, 1903"-----	606.769
From Sharon north along Georgia R. R. to Washington, thence north along highways to Tignall, thence northeast to Lisbon.	
Hillman, at road crossing; top of rail-----	468.0
Ficklin, road crossing near station; top of rail-----	429.0
Washington, 5.5 miles south of, 0.25 mile north of brickyard, 100 feet west of railroad, in front of negro cottage, at east end of Shepard Hall, used as negro school, south of main entrance; iron post stamped "429 Atlanta, 1903"-----	428.732
Washington, in front of station; top of high rail-----	600.0
Washington, Washington Exchange Bank on Main Street, 300 feet south of courthouse, in northwest corner of bank building, 3 feet from ground; aluminum tablet stamped "619 Atlanta, 1903"-----	618.659
Armstrong, 40 feet west of highway at road forks, in front of J. C. Newsome's store, in northeast corner of E P. Robert's yard; iron post stamped "607 Atlanta, 1903"-----	606.664
Tignall, east of Washington-Broad highway, at southwest corner of William Bolton & Co.'s store; iron post stamped "644 Atlanta, 1903"-----	643.645
Dyson, 1 mile east of, 300 feet north of center of road, west end of old house, in brick chimney; aluminum tablet stamped "534 Atlanta, 1903"-----	533.569

From Tignall west along highways to Anon, thence north and east to Bells Bridge, thence south to Tignall.

Ophelia, 0.2 mile north of, in front of and between two entrances to church; iron post stamped "599 Atlanta, 1903"-----	Feet. 598.549
Anon (former post office), at forks of road, 400 feet from bank, at northwest corner of J. C. Brooks's store; iron post stamped "498 Atlanta, 1903"-----	497.514
Vesta, 300 feet west of former post office, at road crossing, on north side, back of west end of schoolhouse; iron post stamped "627 Atlanta, 1903"-----	626.495
Rocky Branch Church, 600 feet east of road forks to Bullard's ferry, south of road, in front of and between two entrances to church; iron post stamped "485 Atlanta, 1903"-----	484.389
Bells Bridge over Broad River, 900 feet north of, south end of E. W. Bell's house, at chimney; iron post stamped "388 Atlanta, 1903"---	387.428

From Armstrong west along highways to Celeste, thence south via Philomath to Lyneville, thence northeast to Washington.

Celeste, at southeast corner of E. A. Barnett's store (former post office); iron post stamped "648 Atlanta, 1903"-----	647.522
Peerman, 5 miles east of, at forks of Woodstock-Lexington road, south end of Jackson Chapel Church; iron post stamped "653 Atlanta, 1903"-----	652.621
Philomath, 600 feet from road forks, at north side, southwest corner of Bryan Bros.' store; iron post stamped "646 Atlanta, 1903"-----	645.454
Lyneville, at forks of roads to Greensboro and Crawfordville, north end of F. L. Asbury's store; iron post stamped "526 Atlanta, 1903"---	525.453
Lyneville, 3.8 miles east of, 60 feet from crossing, just inside of yard in front of E. A. Eaven's house, at gate; iron post stamped "523 Atlanta, 1903"-----	522.391
Tyrone, at road forks, southeast corner of Griffin Bros.' store (former post office); iron post stamped "573 Atlanta, 1903"-----	572.656

From Sharon east along highways to Wrightsboro, thence zigzag northward to Lisbon.

Sharon, 9.1 miles east of, at Sharon-Norwood road forks, northwest corner of Charles Mansfield's store; iron post stamped "534 Atlanta, 1903"-----	533.774
Wrightsboro, 50 feet from road fork, at northeast corner of O. L. Williams's store; iron post stamped "392 Atlanta, 1903"-----	391.670
Anthony, 3.3 miles east of crossroads, 40 feet from center of road, in front of Cedar schoolhouse, at left of entrance; iron post stamped "476 Atlanta, 1903"-----	479.669
Aonia, 1.2 miles east of, on north of road, in fork of lane that runs to Mr. Shipp's house; iron post stamped "463 Atlanta, 1903"-----	462.711
Aonia, south of road at forks, northeast corner of Ware & Tatum store; iron post stamped "499 Atlanta, 1903"-----	498.697
Adasburg, north of road, at south corner of Fanning Bros.' store; iron post stamped "524 Atlanta, 1903"-----	523.597
Metasville, east of road at private forks, at northwest corner of Dr. H. C. Waltrous's house, by brick pillar; iron post stamped "569 Atlanta, 1903"-----	568.570
Possie, 0.4 mile north of former post office, west of and 10 feet from center of road to Danburg, in front of Mulberry Church; iron post stamped "472 Atlanta, 1903"-----	471.494

Danburg, northeast corner of E. R. Anderson's store, left of main entrance; iron post stamped "566 Atlanta, 1903"-----	Feet. 565.458
Graball, 1.1 miles south of, on Augusta road, in front of negro cottage, 0.2 mile north of Fishing Creek, 15 feet from center of road; iron post stamped "360 Atlanta, 1903"-----	359.575

## EATONTON QUADRANGLE.

[Latitude 33° 15'–33° 30'; longitude 83° 15'–83° 30'.]

From Phoenix store along highways to a point 2.1 miles north of Phoenix.

Rockville, 5.7 miles west of, at Phoenix store, 75 feet southeast of crossroads; in root of large black-oak tree; nail, marked "592.6"-----	592.96
Phoenix, 1.6 miles north of, in northeast corner of Spivey's road crossing; in root of large red oak tree; nail, marked "532.2"-----	532.54
Phoenix, 2.1 miles north of, 150 feet south of drain and 20 feet east of road; in ledge of rock; aluminum tablet stamped "436"-----	436.607

From Phoenix store southwest along highways to Eatonton.

Phoenix, 1.1 miles west of, in southwest corner of road to house, 8 feet south of main road, in red-oak tree; nail, marked "566.5"-----	566.84
Phoenix, 2.6 miles west of, 200 feet east of forks to north, 6 feet north of road, in root of white-oak tree; nail, marked "539.4"-----	539.77
Phoenix, 2.6 miles north of, 20 feet east of forks to north, 6 feet north of road; iron post, stamped "537"-----	537.628
Phoenix, 3.9 miles west of, just at top of hill and about 30 feet northwest of road to east, 4 feet west of road and about 4 feet above level of same, in root of tree; nail, marked "595"-----	595.44
Phoenix, 4.9 miles west of, just at top of hill, 125 feet southeast of house, 6 feet west of road, in root of red-oak tree; nail, marked "621"-----	621.24
Phoenix, 4.9 miles southwest of, just at top of hill, 125 feet southeast of house, 6 feet west of road; iron post, stamped "623"-----	623.333
Phoenix, 6.4 miles southwest of, about 1.2 miles north of Eatonton, -6 feet east of road forks to northeast, in root of pine tree; nail, marked "548.6"-----	548.92

From point near Meda along Central of Georgia Ry. to Willard.

Dennis, 4.2 miles north of, at railroad crossing, 12 feet south of railroad track, at west margin of highway; iron post, stamped "579"-----	579.059
Meda, in front of station platform; top of rail-----	592.9
Eatonton, in front of station; top of rail-----	564.4
Eatonton, northwest corner of county courthouse; iron post, stamped "Prim. Trav. Sta. No. 16, 577"-----	577.270
Eatonton, 1.3 miles north of, at railroad crossing, 12 feet west of track, at south margin of highway; iron post, stamped "561"-----	561.404
Eatonton, 4.4 miles northwest of, 20 feet east of track, 7 feet south of milepost 213; iron post, stamped "464"-----	464.393
Eatonton, 7.5 miles northwest of, 625 feet west of milepost 216, at railroad crossing, 10 feet south of track; iron post, stamped "544"-----	544.209
Willard, in front of station; top of rail-----	560.5



## MILLEDGEVILLE QUADRANGLE.

[Latitude 33°-33° 15'; longitude 83°-83° 15'.]

From point 4.8 miles south of Harris Mill south along highways to Devereux.

Harris Mill, 4.8 miles south of, at intersection of Sparta-Oconee Springs ferry and Devereux roads, 6 feet north of road; chiseled square on large flat rock, marked "466.7"-----	Feet. 466.79
Harris Mill, 6.1 miles south of, just at top of hill, 10 feet east of road, near house, in root of walnut tree; nail, marked "472"-----	472.04
Harris Mill, 6.7 miles south of, 150 feet east of Sparta-Oconee Springs and Harris Mill-Devereux cross roads, 25 feet south of road, in ledge of rock; aluminum tablet stamped "492"-----	493.300
Harris Mill, 8.3 miles south of, about 1.5 miles north of Devereux, in low flat place, 4 feet east of road, in root of pine tree; copper nail marked "507"-----	507.15
Devereux, 0.4 mile southwest of, in top of granite milepost 32; aluminum tablet stamped "577"-----	577.330

From point near State farm northeast along Georgia R. R. to Devereux.

State Farm, 0.8 mile east of, 1.5 miles west of Milledgeville, west side of track, in top of milepost 47; aluminum tablet stamped "360"---	360.496
Milledgeville, 0.4 mile northeast of, highest point of granite milepost 45-----	308.10
Milledgeville, 1.4 miles northeast of, in top of granite milepost 44; aluminum tablet stamped "291"-----	291.325
Oconee River R. R. bridge, 2 miles northeast of, in top of granite milepost 41; aluminum tablet stamped "377"-----	376.756
Thomas siding, 0.2 mile northeast of, on highest point of granite milepost 39-----	403.86
Carrs, 2.2 miles southwest of, in top of granite milepost 38; aluminum tablet stamped "445"-----	445.125
Carrs, 0.8 mile northeast of station, in top of granite milepost 35; aluminum tablet stamped "523"-----	522.693
Devereux, 0.4 mile southwest of, in top of granite milepost 32; aluminum tablet stamped "577"-----	577.330

From Devereux south along highway to Friendship Church, thence west to Milledgeville.<sup>1</sup>

Devereux, 0.9 mile south of, in southwest angle of road corner; nail in root of hickory tree-----	603.30
Devereux, 3.4 miles south of, 35 feet south of road fork, in southeast angle of road corner; iron post stamped "611"-----	611.189
Sheba, at southeast corner of former post office; iron post stamped "580"-----	580.218
Friendship Church, 3.2 miles north of, 3 feet north of post-oak tree, 80 feet northwest of crossroad; iron post stamped "541"-----	540.892
Friendship Church, at northwest corner of; iron post stamped "492"-----	492.512
Friendship Church, 2.4 miles west of, 2 feet north of pine tree, in northwest angle of crossroad; iron post stamped "486"-----	486.533

<sup>1</sup> An excessive error is distributed in this line.

	Feet.
Friendship Church, 3 miles west of, 100 feet east of milepost 11, in southeast angle of road corner; nail in root of oak tree-----	489. 99
Union Point Church, at northeast corner of; iron post stamped "395"-----	394. 964
Union Point School, at southwest corner of building; iron post stamped "Prim. Trav. Sta. No. 20, 413"-----	413. 288
Mount Pelian Church, 0.1 mile west of, in southwest angle of road fork; nail in root of oak tree-----	464. 20
Mount Pelian Church, 0.4 mile west of, on top of concrete milepost 4-----	471. 77
Milledgeville, 3.5 miles east of, 0.8 mile west of Mount Pelian Church, 800 feet east of farmhouse, in large granite boulder 36 feet south of center of road; aluminum tablet stamped "435"-----	434. 911
Oconee River highway bridge, east pier of, on north end of pier; point painted with cross mark on iron cap-----	268. 429
Milledgeville, 3 feet from southeast corner of county courthouse yard fence; iron post stamped "Prim. Trav. Sta. No. 19. 326"-----	325. 730
<b>From point 2 miles northeast of Oconee River R. R. bridge north along highway to Island Creek, thence east to point near Devereux.</b>	
Bass School, 0.5 mile north of, 200 feet south of small stream, west of road, in large granite boulder; aluminum tablet stamped "398"-----	397. 650
Island Creek, southeast corner of courthouse; iron post stamped "Prim. Trav. Sta. No. 18, 465"-----	465. 117
Island Creek, 2.3 miles east of courthouse, 280 feet west of road corner, south of road; nail in root of oak tree-----	536. 62
Devereux, 3.5 miles west of, 3.8 miles east of Island Creek courthouse, 15 feet north of road corner; iron post stamped "573"-----	573. 323
Devereux, 1.4 miles west of, in northeast angle of road corner; nail in root of oak tree-----	608. 33

**From Milledgeville to Georgia State Sanitarium.**

Georgia State Sanitarium, at north entrance to freight station; iron post stamped "399"-----	399. 089
--	----------

**SHOULDER QUADRANGLE.**

[Latitude 33° 15'–33° 30'; longitude 83°–83° 15'.]

<b>From point 6.4 miles east of Greensboro along highway to Siloam, thence south along Union Point &amp; White Plains R. R. to White Plains, thence south along highways to a point 4.8 miles south of Harris Mills, thence west along highways via Rockville to a point 4.5 miles northwest of Rockville.</b>	
Greensboro, 6.4 miles southeast of, north of road, 75 feet east of road forks to north, 200 feet south of church and schoolhouse, in root of small tree; copper nail, marked "659"-----	658. 73
Siloam, about 400 feet west of railroad crossing, 25 feet northwest of Hal Rhodes residence, 15 feet south of road; iron post stamped "720"-----	719. 548
Siloam, railroad crossing at; top of rail marked "716.7"-----	716. 7
Siloam, 1.8 miles south of, 7 feet east of railroad track, 50 feet south of road crossing; chiseled square on rock, marked "700"-----	700. 37
Siloam, 3.4 miles south of, 30 feet east of railroad track, about 5 feet above level of same, in ledge of rocks; aluminum tablet stamped "681"-----	681. 316
Siloam, 4.6 miles south of, 40 feet west of railroad crossing, north side of road, in small red-oak tree; copper nail, marked "692"-----	692. 32

White Plains, west side of White Plains Bank Building, 20 feet south of entrance, 3 feet above ground, in brick wall; aluminum tablet stamped "696"-----	Feet. 695.676
White Plains, 1.2 miles south of, in forks of road to east, in root of large black-oak tree; nail, marked "630"-----	630.33
White Plains, 2.4 miles south of, 125 feet west of second-class road forks to southwest, on large rock; chiseled square, marked "584"-----	584.38
White Plains, 4.1 miles south of, 100 feet west of schoolhouse, 7 feet east of road, in root of red-oak tree; nail, marked "618"-----	617.69
White Plains, 4.1 miles south of, at northwest corner of schoolhouse, 60 feet east of road; iron post stamped "623"-----	623.528
White Plains, 5.3 miles south of, in small grove of pine trees, 6 feet west of road, in root of pine tree; nail, marked "541"-----	540.99
White Plains, 6.4 miles south of, 6 feet west of road, about 100 feet north of creek crossing where mail post stands; chiseled square on rock, marked "425"-----	424.73
White Plains, 7.5 miles south of, intersection of White Plains, Sparta, and Harris Mill roads; rock marked "490.4"-----	490.50
White Plains, 7.5 miles south of, intersection of White Plains, Sparta, and Harris Mill roads; iron post stamped "491"-----	491.167
White Plains, 8.4 miles south of, 25 feet north of second-class road to south, 200 feet east of milepost "Sparta 11 mi.", 6 feet north of road, in root of tree; nail marked "481"-----	481.16
White Plains, 9.7 miles south of, 100 feet west of top of rise in road, 7 feet north of same, in root of red-oak tree; nail, marked "435"-----	435.81
White Plains, 10.9 miles south of, 400 feet west of creek, 20 feet southeast of road forks, 3 feet south of road; cross on rock, marked "360"-----	360.18
White Plains, 11.4 miles south of, at Harris Mill, 75 feet northeast of store, 30 feet east of road; iron post stamped "390, Prim. Trav. Sta. No. 4"-----	393.272
Harris Mill, 1 mile south of, at intersection of Sparta, Eatonton, and Devereux roads, 6 feet north of forks, in top of cedar post; nail, marked "453"-----	453.34
Harris Mill, 2.6 miles south of, 16 feet north of drain and 6 feet west of road; cross on rock, marked "381"-----	380.70
Harris Mill, 3.4 miles south of, second-class road forks to west, about 600 feet north of colored church, 20 feet east of road, on top of hill; aluminum tablet set in rock, stamped "495"-----	495.453
Harris Mill, 4.8 miles south of, at intersection of Sparta, Oconee Spring Ferry, and Deveraux roads, 6 feet north of road; chiseled square on large flat rock, marked "467"-----	466.79
Harris Mill, 6.4 miles southwest of, just at top of hill, 30 feet northwest of road forks south, 7 feet north of road, in side of tree; nail, marked "512"-----	512.41
Harris Mill, 7.5 miles southwest of, in northeast angle of road forks, in root of large red-oak tree; nail, marked "598"-----	598.03
Harris Mill, 7.5 miles southwest of, at T road north, at residence of C. C. Harper; iron post stamped "600"-----	600.046
Harris Mill, 8.7 miles southwest of, 6 feet north of road, about 0.5 mile west of Antioch Church, in root of large white-oak tree; nail, marked "509.4"-----	509.58
Harris Mill, 10.2 miles southwest of, in southwest corner of T road south to Silvin Hill; iron post stamped "484 Prim. Trav. Sta. No. 24"-----	484.391

Harris Mill, 11.5 miles south of, 40 feet south of Logdam Creek, 6 feet northwest of road, in side of tree; nail, marked "333"-----	Feet. 333.12
Harris Mill, 13.2 miles southwest of, at Oconee Spring Ferry, 75 feet east of east bank, 10 feet north of road, in root of white-oak tree; nail, marked "327.8"-----	328.02
Harris Mill, 13.2 miles southwest of, at Oconee Spring Ferry, 75 feet east of east bank of river, 10 feet north of road; iron post stamped "327"-----	326.981 312.
Oconee Spring Ferry; water surface of Oconee River, Feb. 6, 1911--	
Harris Mill, 15.4 miles southwest of, about 1 mile south of Rockville, just at top of hill by old shack, 20 feet west of road, in root of tree; nail, marked "520.3"-----	520.54
Rockville, in angle of road forks, 125 feet north of store; iron post stamped "559 Prim. Trav. Sta. No. 17, 1906 Ga"-----	559.053
Rockville, 1.4 miles north of, in southeast corner of T road south, on rock at end of culvert; cross, marked 650"-----	650.43
Rockville, 2.8 miles northwest of, in west corner of forks to south, on large rock; cross marked "634.7"-----	635.03
Rockville, 3.9 miles northwest of, 100 feet east of second-class road forks south, 6 feet south of road, on corner rock; cross marked "558.5"-----	558.79
Rockville, 4.5 miles west of, in west corner of road forks to southwest, in root of red-oak tree; nail marked "600.8"-----	601.12
Rockville, 4.5 miles northwest of, in west angle of road forks to southwest; iron post stamped "602"-----	602.574
 <b>From point 3.8 miles north of Phoenix north along highways to a point 8.4 miles north of Reads Ferry.</b>	
Phoenix, 3.8 miles north of, in southwest angle of road forks to southwest, in root of red-oak tree; nail, marked "513"-----	513.44
Phoenix, 4.8 miles north of, in north angle of road forks to northwest, about 0.2 mile southwest of Reads Ferry; iron post stamped "460 Prim. Trav. Sta. No. 25"-----	459.967
Oconee River at Reads Ferry; water level, Feb. 14, 1911-----	395
Reads Ferry, 1 mile north of, just at top of hill, 20 feet south of road and about 75 feet north of house, in root of tree; nail, marked "521"-----	521.38
Reads Ferry, 1.6 miles north of, in forks of T road south, intersection of Reads Ferry, Greensboro, and White Plains roads; cross on rock marked "580"-----	580.22
Reads Ferry, 2.7 miles north of, 100 feet north of road forks to southwest, 10 feet west of road, in root of pine tree; nail marked "544"-----	544.14
Reads Ferry, 4.3 miles north of, 100 feet west of Richland Creek, 6 feet north of road, set in ledge of rock; aluminum tablet stamped "434"-----	434.517
Reads Ferry, 5.2 miles north of, in southeast angle of road forks, in side of telephone pole; nail, marked "489.4"-----	489.85
Reads Ferry, 7.2 miles north of, top of hill, 20 east of road near large white house, in root of tree; nail, marked "562.5"-----	562.93
Reads Ferry, 8.4 miles north of, north side of road, by schoolhouse, in root of pine tree; nail marked "611"-----	611.50

From White Plains west along highways via Liberty post office to Reads Ferry.

	Feet.
White Plains, 1.2 miles west of, north side of road, 30 feet north of forks to south; chiseled square on rock, marked "659"-----	658.98
White Plains, 2.3 miles west of, just at top of little rise, 6 feet north of road, 30 feet northwest of second-class forks; chiseled square on rock marked "617"-----	617.50
White Plains, 3.8 miles west of, 250 feet east of bridge over Jerigan Creek, 10 feet north of road, about 3 feet above level of same, in ledge of rock; aluminum tablet stamped "464"-----	464.452
White Plains, 4.4 miles west of, at Clements store, in northeast corner of road forks, in root of large red-oak tree; copper nail, marked "604"-----	603.83
White Plains, 5.3 miles west of, about 50 feet west of drop off in road, 6 feet north of same, on rock; chiseled square, marked "567"-----	566.76
White Plains, 6.6 miles west of, 300 feet west of hill top, 6 feet north of road, on rock; chiseled square, marked "586"-----	585.69
White Plains, 7.7 miles west of, 300 feet north of road forks, about 250 yards north of Liberty Church, 10 feet east of road, in ledge of rock; aluminum tablet stamped "572"-----	572.438
Liberty, 1.2 miles west of post office, just at top of hill, 20 feet to south of road; cross on rock marked "564"-----	564.10
Liberty, 2.1 miles west of post office, 40 feet south of road forks to north, about 60 feet southeast of Sandy Creek crossing; chiseled square on rock marked "436"-----	435.82
Liberty, 3.8 miles west of post office, 4 feet west of road, by large popular tree, about 450 feet south of bridge over Richland Creek, in root of tree; copper nail, marked "404"-----	403.77
Liberty, 3.8 miles west of post office, 75 feet south of east end of bridge over Richland Creek; aluminum tablet set in rock stamped "408"-----	407.903
Liberty, 4.8 miles west of post office, 50 feet west of forks to south, about 500 feet south of large brick house, in root of large red tree; copper nail, marked "545"-----	545.32
Liberty, 5.9 miles west of post office, at Salem Church, 10 feet southwest of road forks to south, in root of white-oak tree; nail, marked "608"-----	608.30
Liberty, 6.9 miles west of post office, 400 feet west of M. Callahan's house, 60 feet east of forks of road, 6 feet south of same, in ledge of rock; aluminum tablet stamped "557"-----	556.798

### GEORGIA-SOUTH CAROLINA PRIMARY LEVELING.

Carnesville, Crawfordville, Elberton, and Walhalla quadrangles.

ELBERT, FRANKLIN, HABERSHAM, AND HART COUNTIES, GA.; ABBEVILLE, ANDERSON, AND OCONEE COUNTIES, S. C.

The elevations in the following list (Tugaloo and Savannah Rivers Survey) were determined by extensions from Rome and Jackson, Ga. The leveling was done in 1903 by T. B. O'Hagan.

#### WALHALLA QUADRANGLE.

[Latitude 34° 30'–35°; longitude 83°–83° 30'.]

From Clarkesville to Tallulah Falls, Ga.

	Feet.
Clarksville, Habersham County court house, north side of east entrance; bronze tablet stamped "1373 Atlanta"-----	1, 371. 991
Tallulah Falls, 20 feet south of station, 70 feet east of public road, in rock; bronze tablet stamped "1569 Atlanta" (on single spur line)-----	1, 568. 302

From point 2 miles south of Tallulah Falls south down Tugaloo and Savannah Rivers to Knox Bridge.

Panther Creek, 600 feet south of mouth, 50 feet west of river, west edge of public road, in large rock; bronze tablet stamped "715 Atlanta"-----	713. 793
James Prather homestead, middle step of front entrance; bronze tablet stamped "728 Atlanta"-----	726. 873
Tugaloo River, Southern Railroad bridge crossing Tugaloo River, on west abutment; bronze tablet stamped "666 Atlanta"-----	665. 467
Jenkins Ferry, W. J. Perkins's homestead, north side of house, in chimney, 2 feet above ground; bronze tablet stamped "732 Atlanta" (on single-spur line)-----	730. 754
Shelor Ferry, 0.3 mile southwest of, 100 feet northwest of P. E. Martin's house, 10 feet north of road, in large rock; bronze tablet stamped "630 Atlanta"-----	628. 875

#### CARNESVILLE QUADRANGLE.

[Latitude 34°–34° 30'; longitude 83°–83° 30'.]

At Knox Bridge.

Knox Bridge, 200 feet west of, in chimney of S. A. Glenn's house; bronze tablet stamped "613 Atlanta"-----	612. 241
--	----------

ELBERTON QUADRANGLE.

[Latitude 34°-34° 30'; longitude 82° 30'-83°.]

From Knox Bridge south down Tugaloo and Savannah rivers to Lisbon.

Averys Ferry, 20 feet south of river, top of cliff, in rock; bronze tablet stamped "588 Atlanta"-----	587. 443
Andersonville, S. C., east side of road, 200 feet east of river, northwest of Little Beaverdam Creek, in rock; bronze tablet stamped "538 Atlanta"-----	537. 519
Browns Ferry, S. C., 1,200 feet northeast of, O. C. Brown's house, in brick and stone abutment at rear, northwest corner; bronze tablet stamped "518 Atlanta"-----	516. 891
Parks Ferry, 0.2 mile above, west side of Ferry road, opposite house, foot of steep hill, in cliff; bronze tablet stamped "495 Atlanta"---	494. 435
Craft Ferry, 125 feet west of boat landing, 60 feet west of river, in rock; aluminum tablet stamped "450 Atlanta"-----	449. 306
Harper Ferry, S. C., 250 feet south of W. J. Taylor's house, side of brook, in limestone; bronze tablet stamped "420 Atlanta"-----	419. 146
Calhoun Falls, S. C., 2 miles west of, Seaboard Air Line bridge over Savannah River, east side of bridge, in abutment; bronze tablet stamped "383 Atlanta"-----	Feet. 382. 161
Calhoun Ferry, 2.5 miles southeast of, 50 feet west of river, in large rock; bronze tablet stamped "320 Atlanta"-----	319. 252

CRAWFORDVILLE QUADRANGLE.

[Latitude 33° 30'-34°; longitude 82° 30'-83°.]

At Lisbon.

Lisbon, in brick wall of R. L. Cade's store; bronze tablet stamped "328 Atlanta"-----	327. 850
---	----------



## APPENDIX.

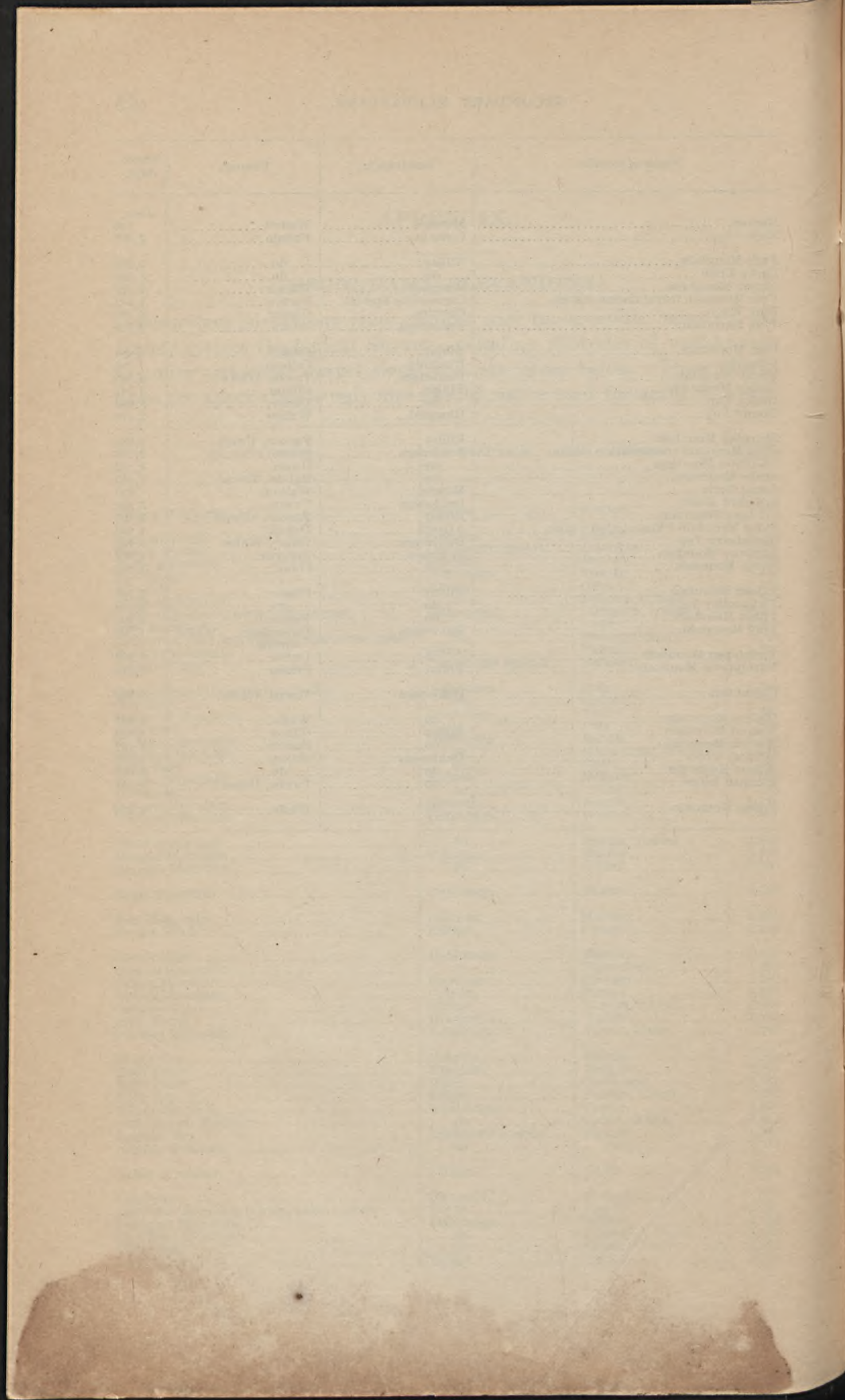
### SECONDARY ELEVATIONS.

Secondary elevations from records and topographic maps of the United States Geological Survey, including altitudes of well-known summits and other useful elevations, are given below. These elevations are approximate only and should not be used for accurate work.

Name of locality.	Quadrangle.	County.	Elevation.
			<i>Feet.</i>
Alcovy Mountain.....	Monroe.....	Walton.....	1,108
Bald Mountain.....	Cohutta.....	Murray.....	4,010
Bear Mountain.....	Cartersville Special.....	Cherokee.....	2,276
Beety Mountain.....	Cohutta.....	Fannin.....	3,495
Bell Mount.....	Dahlonega.....	Towns.....	3,446
Big Bald.....	Ellijay.....	Gilmer.....	4,120
Black Mountain.....	do.....	Dawson, Gilmer.....	3,600
Blood Mountain triangulation station.....	Dahlonega.....	Lumpkin, Union.....	4,463
Blue Mountain.....	do.....	Towns.....	4,045
Brasstown Bald (the highest point in the State).....	do.....	Towns, Union.....	4,768
Brawley Mountain.....	Ellijay.....	Fannin.....	4,031
Brushy Knob.....	Cartersville Special.....	Bartow.....	1,527
Carnes Mount triangulation station.....	Tallapoosa.....	Polk.....	1,316
Carrollton.....	do.....	Carroll.....	1,095
Cedarecliff Mountain.....	Dahlonega.....	Towns.....	3,391
Cedartown.....	Rome.....	Polk.....	809
Chestnut Mountain.....	Dahlonega.....	Rabun.....	4,600
Chimney Mountain.....	do.....	Habersham, White.....	3,446
Coosa Bald.....	do.....	Union.....	4,287
Cornish Mountain.....	Monroe.....	Newton.....	1,000
Covington.....	do.....	do.....	763
Cowpen Mountain.....	Cohutta.....	Fannin.....	4,137
Cowrock Mountain.....	Dahlonega.....	White.....	3,867
Dicks Creek Gap.....	do.....	Rabun, Towns.....	2,669
Doogan Mountain.....	Cohutta.....	Murray.....	2,025
Douglas Mountain.....	do.....	Gilmer.....	2,585
Eagle Mountain.....	Dahlonega.....	Towns.....	4,280
Fort Mountain.....	Cohutta.....	Murray.....	2,835
Frozen Knob.....	Ellijay.....	Union.....	3,489
Glassy Knob.....	Dahlonega.....	Towns.....	3,650
Goshen Mountain.....	do.....	Habersham.....	2,923
Grassy Mountain.....	Suwanee.....	Pickens.....	3,290
Grassy Mountain.....	Cohutta.....	Murray.....	3,682
Gregory Knob.....	Ellijay.....	Fannin, Union.....	3,480
Gulf Mount.....	Ringgold.....	Walker.....	2,200
Gumlog Mountain.....	Dahlonega.....	Towns, Union.....	3,743
Hemp Top.....	Cohutta.....	Fannin.....	3,600
High Point.....	Ringgold.....	Walker.....	2,392
High Point.....	Rome.....	Chattooga.....	1,617
High Top.....	Ellijay.....	Fannin, Union.....	3,462
Hightower Bald.....	Dahlonega.....	Towns.....	4,567
Horsetrough Mountain.....	do.....	Union, White.....	4,052
Hughes Gap.....	Ducktown Special.....	Fannin.....	1,996
Hughes Mountain.....	do.....	do.....	2,159
Kelley Mountain.....	Ellijay.....	Union.....	2,522
Lafayette.....	Ringgold.....	Walker.....	871
Lavender Mountain triangulation station.....	Rome.....	Floyd.....	1,695
Leadpole Mountain.....	Dahlonega.....	White.....	2,206
Levelland Mountain.....	do.....	Lumpkin, Union.....	3,942
Little Bald.....	do.....	Towns, Union.....	4,473
Little Bald.....	Ellijay.....	Gilmer.....	4,021



Name of locality.	Quadrangle.	County.	Elevation.
Monroe.....	Monroe.....	Walton.....	<i>Fect.</i> 910
Mule Top.....	Cohutta.....	Fannin.....	3,057
Paris Mountain.....	Ellijay.....	do.....	2,318
Parke Knob.....	do.....	Walker.....	3,680
Pigeon Mountain.....	Ringgold.....	Walker.....	2,329
Pine Mountain triangulation station.....	Cartersville Special.....	Bartow.....	1,552
Pink Knob.....	Cohutta.....	Gilmer.....	3,482
Pink Mountain.....	Dahlonega.....	White.....	2,709
Rich Mountain.....	Ellijay.....	Gilmer.....	4,081
Ringgold.....	Ringgold.....	Catoosa.....	785
Rocky Mountain.....	Dahlonega.....	Towns, White.....	4,060
Rocky Mountain.....	Ellijay.....	Gilmer.....	3,541
Rocky Top.....	do.....	Union.....	3,060
Round Top.....	Ringgold.....	Walker.....	2,378
Sharptop Mountain.....	Ellijay.....	Fannin, Union.....	2,083
Skitt Mountain triangulation station.....	Dahlonega.....	White.....	2,076
Slaughter Mountain.....	do.....	Union.....	4,370
Snake Mountain.....	do.....	Rabun, Towns.....	3,365
Social Circle.....	Monroe.....	Walton.....	880
Spaniard Knob.....	Dahlonega.....	Towns.....	3,860
Springer Mountain.....	Ellijay.....	Fannin, Gilmer.....	3,820
Stone Mountain triangulation station.....	Atlanta.....	Dekalb.....	1,686
Strawberry Top.....	Dahlonega.....	Union, White.....	3,744
Suwanee Mountain.....	Suwanee.....	Forsyth.....	1,967
Sweat Mountain.....	do.....	Cobb.....	1,694
Talona Mountain.....	Ellijay.....	Gilmer.....	2,115
Tickanetley Bald.....	do.....	do.....	4,054
Tifton Mountain.....	do.....	Fannin.....	3,201
Tray Mountain.....	Dahlonega.....	Habersham, White, Towns.....	4,398
Turkeypen Mountain.....	do.....	Union.....	3,227
Turniptown Mountain.....	Ellijay.....	Gilmer.....	3,614
Unicoi Gap.....	Dahlonega.....	Towns, White.....	2,963
Walker Mountain.....	do.....	White.....	2,641
Walnut Mountain.....	Ellijay.....	Gilmer.....	2,628
Watson Mountain.....	do.....	Fannin.....	2,769
Wildcat Knob.....	Dahlonega.....	Union.....	4,018
Wilson Mountain.....	do.....	do.....	3,047
Wolfpen Ridge.....	do.....	Towns, Union.....	4,251
Yonah Mountain.....	do.....	White.....	3,173



## INDEX.

A.	Page.		Page.
Abbeville County, S. C.	50	Blairsville	18
Achord	12	Blood Mountain triangulation station	52
Acworth	27	Blue Mountain	52
Acworth quadrangle	29	Blue Ridge	16
Adairsville	28	Blue Ridge quadrangle	16
Adairsville quadrangle	28	Box Springs	35
Adams Park	11	Brasstown Bald	52
Adasburg	43	Braswell	9
Aikenton	41	Brawley Mountain	52
Alaculsy	21-22	Brentwood	13
Alcovy Mountain	52	Briceville	8
Allatoona	29	Broad River	43
Alpine	31	Browns Crossing	15
Anderson County, S. C.	50	Browns Ferry, S. C.	51
Andersonville, S. C.	51	Brunswick	14
Annedelle	32	Brunswick quadrangle	14
Anon	43	Brushy Knob	52
Anstell	9	Buckhead	41
Anthony	43	Bullards	11
Antioch	32	Bullochville	34
Aonia	43	Burton	19
Appling County	7	Butler	38
Argo	17	Butts County	7, 40
Armstrong	42	Byrd	8
Armuchee	31	Byron	38
Arnold, C. W., leveling by	19		
Athon siding	41	C.	
Atlanta	10	Caldwell, Carroll, leveling by	33
Atlanta, Birmingham & Atlantic R. R.	14	Calhoun Falls, S. C.	51
Atlanta Junction	8	Calhoun Ferry	51
Atlanta quadrangle	9-10	Cameo	35
Atlantic Coast Line	13-14	Cannonville	36
Avery Ferry	51	Carbondale	8
		Carey	41
B.		Carnes Mountain triangulation station	52
Bald Mountain	52	Carnesville quadrangle	50
Baldwin County	40	Carns Mill	26
Barnett	42	Carroll County	30
Bass School	46	Carrollton	52
Baughville	36	Carrs	45
Baxley	13	Cartecay quadrangle	16, 20
Baxley quadrangle	13	Carters	24, 25
Bear Mountain	52	Cartersville	27
Beatty switch	9	Cass	27
Beety Mountain	52	Cassville	28
Belleview	36	Cataula	35
Bell Mount	52	Cavender Bridge	17
Bells Bridge	43	Cave Spring	31
Bench marks, description of	6	Cedarcliff Mountain	52
views of	5	Cedartown	31, 52
Benefit	18	Celeste	43
Berner	10	Cement	28
Bibb County	7, 32	Centralhatchie	32
Big Bald	52	Central of Georgia Ry.	31, 34, 35, 37-42, 44
Black Mountain	52	Chalybeate	37
Blaine	26	Chambers	8

	Page.		Page.
Chatsworth .....	22, 23	Dennis .....	41, 44
Chattahoochee County .....	32	Devereux .....	45, 46
Chattahoochee River bridge .....	9	Dicks Creek Gap .....	19, 52
Chattooga County .....	30	Dock Junction .....	14
Chauncey .....	12	Dodge County .....	7
Chestnut Mountain .....	52	Don .....	9
Chimney Mountain .....	52	Doogan .....	22
ChIPLEY .....	35	Doogan Mountain .....	52
Choestoe .....	18	Douglas Mountain .....	52
Cisco .....	22	Dyson .....	42
Clarksville .....	18, 50		
Classification of elevations .....	5	E.	
Clayton County .....	7	Eagle Mountain .....	52
Cleveland .....	18	Eastman .....	12
Coast & Geodetic Survey, elevations from .....	14	Eastman quadrangle .....	12
Cobb County .....	7	East Rome .....	30
Cochran .....	11	Eatonton .....	44
Cochran quadrangle .....	11	Eatonton quadrangle .....	44
Cochrans .....	17	Echeconnee .....	37
Coffee County .....	7	Elbert County .....	50
Cohutta quadrangle .....	20-22	Elberton quadrangle .....	51
Cole Crossing .....	16	Elevations, classification .....	5
Columbus .....	39	Ellen N .....	10
Columbus quadrangle .....	38-39	Ellenwood .....	10
Commonwealth .....	35	Ellerslie .....	34, 35
Conasauga .....	16	Ellijay .....	16, 20-21, 25
Concord .....	34	Ellijay quadrangle .....	16-18
Concord Church .....	40	Emerson .....	27
Coniston .....	23-24	Empire .....	11
Conley .....	10	Enoch quadrangle .....	22-23
Constitution .....	10	Esquiline .....	39
Cooper Gap .....	17	Eton .....	22, 23
Coosa Bald .....	52	Etowah River .....	8, 29
Copeland .....	37	Evans Chapel .....	37
Corbin .....	29	Everett .....	14, 38
Cork .....	10	Everett quadrangle .....	13-14
Cornelia .....	18	Everett station .....	38
Cornish Mountain .....	52	Experiment .....	33
Corps of Engineers, elevations from .....	14, 30		
Covington .....	52	F.	
Cowpen Mountain .....	52	Fairmount .....	26, 29-30
Cowrock Mountain .....	52	Fairy .....	22
Cox .....	12	Farmville .....	28
Craft Ferry .....	51	Farnsworth, F. W., leveling by .....	40
Crandall .....	22	Fayetteville quadrangle .....	33
Crawford County .....	32	Fergusson .....	28
Crawfordville .....	42	Ficklin .....	42
Crawfordville quadrangle .....	42-44, 51	Flippen .....	10
Crowders station .....	34	Flovilla .....	10
Crystal Springs .....	31	Floyd County .....	7, 30
Culberson .....	17	Folsom .....	28
Curtis .....	17	Forsyth quadrangle .....	10-11
Cusseta .....	39	Fort Mountain .....	52
		Fortson .....	35
D.		Fort Valley .....	38
Dade County .....	14	Fort Valley quadrangle .....	38
Dahlonega .....	18	Foster Mills .....	31
Dahlonega quadrangle .....	18-19	Fouche .....	31
Dallas .....	9	Foust, F. L., leveling by .....	33
Dalton .....	8, 16	Franklin, W. H., leveling by .....	33
Dalton quadrangle .....	8, 16	Franklin .....	32
Dames Ferry .....	11	Franklin County .....	50
Danburg .....	44	Friendship Church .....	45-46
Datum, explanation of .....	6-7	Frozen Knob .....	52
Demorest .....	18	Fulton County .....	7

G.	Page.		Page.
Gabbetville.....	36	Houston County.....	32
Gaddistown.....	17	Hughes Gap.....	52
Galloway.....	18	Hughes Mountain.....	52
Gardi.....	13	I.	
Geneva.....	35	Island Creek.....	46
Georgia & Alabama Ry.....	12	Ivylog Church.....	17
Georgia Ry.....	15, 42, 45	J.	
Georgia-South Carolina, primary leveling in.	50-51	Jackson.....	10, 40
Georgia State Sanatorium.....	46	Jackson quadrangle.....	10, 40
Gilbert, W. W., leveling by.....	14	James.....	15
Gilmer County.....	19	Jamestown.....	39
Glassy Knob.....	52	Jasper County.....	40
Glynn County.....	7	Jay.....	17
Godfrey.....	41	Jenkinsburg.....	10
Godwinsville.....	12	Jenkins Ferry.....	50
Gordon County.....	7, 19	Jerusalem.....	30
Goshen Mountain.....	52	Jesup.....	13
Graball.....	44	Jesup quadrangle.....	13
Graham.....	13, 32	Jolly.....	34
Grassy Mountain.....	52	Jones Crossroads.....	36
Gray, W. H., leveling by.....	16	Juliette.....	11
Green, B. J., leveling by.....	27	Juniper.....	35
Greene County.....	40	K.	
Greensboro.....	41-42, 46	Kartah.....	31
Greensboro quadrangle.....	41-42	Kelley Mountain.....	52
Greenwood.....	33	Kingsboro.....	35
Gregory Knob.....	52	Kingston.....	28
Gresston.....	12	Knox Bridge.....	50
Gresston quadrangle.....	12	Kyle.....	18
Griffin.....	33	L.	
Gulf Mount.....	52	Lafayette.....	52
Gumlog Mountain.....	52	Lagrange.....	32
H.		Lavender.....	31
Habersham County.....	50	Lavender Mountain triangulation station.....	52
Haddock.....	15	Leadpole Mountain.....	52
Hall, W. C., leveling by.....	7	Lenox.....	9
Halloca.....	39	Leveling. <i>See</i> Precise leveling; Primary leveling.	
Halls.....	28	Levelland Mountain.....	52
Hamilton.....	35, 37	Liberty.....	49
Harper.....	8	Lincoln County.....	40
Harper Ferry, S. C.....	51	Lindale.....	8
Harris.....	34	Lisbon.....	51
Harris County.....	32	Little Bald.....	52
Harris Mill.....	45, 47-48	Locust Grove.....	10
Hart County.....	50	Long.....	9
Hassler Mill.....	16	Longstreet.....	11
Hazlehurst.....	12	Loudsville.....	18
Heard County.....	30	Louisville & Nashville R. R.....	16-18, 20-26
Helena.....	12	Luella.....	33
Hemp quadrangle.....	16	Lumber City.....	12
Hemp Top.....	52	Lumber City quadrangle.....	12
Hemptown Gap.....	17	Lyerly.....	31
Henrico.....	10	Lynneville.....	43
Henry County.....	7, 32	M.	
High Point.....	52	Mableton.....	9
High Top.....	52	McDonough, J. A., leveling by.....	30
Hightower Bald.....	52	McDonough.....	10, 33
Hills, H. W., leveling by.....	27	McDonough quadrangle.....	10, 33
Hillsman.....	42	McDuffie County.....	40
Hiram.....	9	McGee Bridge.....	32
Hiwassee.....	19	McGriff.....	11
Holton.....	11, 15	Machen.....	40
Hooker.....	14		
Horsetrough Mountain.....	52		

	Page.		Page.
Machen quadrangle.....	40	Odum.....	13
McNair, E. L., leveling by.....	7	Oglethorpe County.....	40
Macon.....	11, 15, 37	O'Hagan, T. B., leveling by.....	50
Macon and Birmingham Ry.....	34	Ollie.....	25
Macon-Atlanta Junction.....	15	Oostanaula.....	8
Macon quadrangle.....	11, 15, 37	Oostanaula River bridge.....	8
McPherson.....	9	Opelika quadrangle.....	35-37
McRae.....	12	Ophelia.....	43
McRae quadrangle.....	12	Oran.....	16
Madison.....	41		
Madison quadrangle.....	41	P.	
Marietta quadrangle.....	9	Pandarvis.....	13
Martin, J. S., leveling by.....	16	Panther Creek.....	50
Mauldin, T. S., jr., leveling by.....	16	Paris Mountain.....	53
Mean sea level, definition of.....	6-7	Park Knob.....	53
Meda.....	44	Parker, J. A., leveling by.....	40
Meriwether.....	41	Parks Ferry.....	51
Meriwether County.....	32	Paschal Junction.....	38
Meriwether quadrangle.....	15, 41	Paschal quadrangle.....	38
Metasville.....	43	Paulding County.....	7
Metcalfe, J. B., jr., leveling by.....	33, 40	Payton.....	10
Milledgeville.....	45, 46	Peerman.....	43
Milledgeville quadrangle.....	45-46	Pennick.....	14
Miller.....	8	Personnel.....	5
Mineral Bluff.....	16	Phelps.....	8
Misker.....	12	Philomath.....	43
Mobley.....	35	Philpots Ferry.....	32
Molena.....	34	Phoenix.....	44, 48
Molton.....	15	Pickens County.....	19
Monroe.....	53	Pigeon Mountain.....	53
Monroe County.....	7	Pike County.....	32
Monticello.....	40	Pine Grove.....	13
Moore, W. S. D., leveling by.....	16, 30	Pine Log.....	29
Moore Mills.....	30	Pine Mountain triangulation station.....	53
Morgan County.....	40	Pink Knob.....	53
Morganton.....	16, 17	Pink Mountain.....	53
Mossy Creek.....	18	Pinson.....	8
Mountain Hill.....	36	Plainville.....	8
Mountain Scene.....	19	Pole.....	18
Mount Pelian Church.....	46	Polk County.....	7, 30
Mount Pleasant.....	13	Popes Ferry.....	11
Mule Top.....	53	Porter Springs.....	18
Mulky Gap.....	17	Possie.....	43
Murray County.....	19	Powder Springs.....	9
Muscogee County.....	32	Powersville.....	38
Muscogee Junction.....	39	Precise leveling, definition of.....	5
		elevations by.....	7-15
N.		Primary leveling, definition of.....	5
Nacoochee.....	18	in Georgia, elevations by.....	15-51
Nankipooch.....	35	in South Carolina, elevations by.....	50-51
Nashville, Chattanooga & St. Louis Ry.....	14, 28-29	Publication, previous.....	5
Neal.....	34	Pulaski County.....	7
Nebula.....	34	Pumpkinvine Bridge.....	9
Newry.....	35		
Nickajack.....	9	R.	
North Rome.....	8	Raccoon Creek Ford.....	31
Norton.....	10	Raleigh.....	34
		Ramburst.....	23
O.		Rands quadrangle.....	16
Oakdale.....	9	Ranger.....	24, 26
Oakman.....	24	Ravenel.....	9
Oak Mountain station.....	34	Reads Ferry.....	42, 48
Ochiltee.....	39	Red Clay.....	8
Oconee County, S. C.....	50	Reeves.....	8
Oconee River bridge.....	45, 46	Reid.....	11
Oconee Spring Ferry.....	48	Reidsboro.....	34
		Rex.....	10

	Page.		Page.
Reynolds.....	38	Stinson.....	34
Reynolds quadrangle.....	38	Stockbridge.....	10
Rich Mountain.....	53	Stone Mountain triangulation station.....	53
Ringgold.....	53	Strawberry Top.....	53
Ringgold quadrangle.....	8, 14	Sugar Valley.....	8
Roberts.....	15	Summerville.....	31
Robertstown.....	18	Surrency.....	13
Robinson.....	42	Surrency quadrangle.....	13
Rockmart.....	9	Sutallee.....	29
Rockville.....	44, 48	Suwanee Mountain.....	53
Rocky Branch Church.....	43	Sweat Mountain.....	53
Rocky Mountain.....	53	Sweetwater Creek.....	9
Rocky Top.....	53		
Rogers.....	27	T.	
Rome.....	8, 30	Tails creek.....	24-25
Rome quadrangle.....	8-9, 30-32	Talbot County.....	32
Roopville.....	32	Talbotton.....	36
Roosevelt.....	25	Talbotton quadrangle.....	34-35
Round Top.....	53	Taliaferro County.....	40
Rover.....	33	Talking Rock.....	26
Rutland.....	37	Talking Rock quadrangle.....	23-26
		Tallah Falls.....	50
S.		Tallah Falls Ry.....	18
San Hill Springs.....	39	Talona.....	26
Schatulga.....	38	Talona Mountain.....	53
Scotland.....	12	Taylor County.....	32
Scotland quadrangle.....	12	Telfair County.....	7
Seaboard Air Line Ry.....	27, 39	Tesatee Gap.....	18
Sea level, definition of.....	6-7	Thomas siding.....	45
Secondary elevations.....	52-53	Tickenetly Bald.....	53
Semper, C. H., leveling by.....	40	Tifton Mountain.....	53
Seney.....	8-9	Tigmall.....	42
Senseneby, H. S., leveling by.....	19	Tioga.....	20
Shannon.....	8	Tiptop.....	35
Sharon.....	42, 43	Tobesofkee quadrangle.....	11, 37
Sharp Top Mountain.....	53	Toccoa River bridge.....	16
Shelor Ferry.....	50	Topographic maps, list of.....	7
Shiloh.....	34, 37	Towalaga.....	33
Shoulder quadrangle.....	46-49	Towns.....	12
Siloam.....	46	Tray Mountain.....	53
Silver Creek.....	8	Trimble, K. W., leveling by.....	19
Sixmile.....	31	Troup County.....	30, 32
Skeener Gap.....	17	Tugalo River.....	50
Skitt Mountain triangulation station.....	53	Tulip.....	31
Slaughter Mountain.....	53	Tunis.....	10
Smiths Mill.....	37	Turkeypen.....	53
Snake Mountain.....	53	Turniptown Mountain.....	53
Snelson.....	34	Twiggs County.....	7
Social Circle.....	53	Two Run.....	17
Sonora.....	28	Tyrone.....	43
Soque.....	19		
South Atlanta.....	10	U.	
South Carolina-Georgia, primary leveling in.....	50-51	Unicoi Gap.....	53
Southern Ry.....	8-14, 33-34	Union Point.....	41
Southern Ry. bridge H. 101.7.....	9	Union Point & White Plains R. R.....	46-48
South switch.....	9	Union Point Church.....	46
Spalding.....	32	Upatoi.....	35
Spaniard Knob.....	53	Ursula.....	37
Springer Mountain.....	53		
Spring Place quadrangle.....	23	V.	
Starbuck.....	9	Varnell.....	8
Star Point schoolhouse.....	32	Vesta.....	43
State Farm.....	15, 41, 45	Virgin.....	11
Sterling.....	14	Visage.....	19
Stilesboro.....	27		
Stilesboro quadrangle.....	27-28	W.	
		Walden.....	37
		Waleska.....	30

	Page.		Page.
Waleska quadrangle.....	26, 29-30	Wildcat Knob.....	53
Walhalla quadrangle.....	50	Wilkes County.....	40
Walker Mountain.....	53	Willard.....	41, 44
Walnut Mountain.....	53	Williamson.....	34
Wares.....	32	Willow.....	18
Waring.....	8	Wilscot.....	17
Warren County.....	40	Wilson Mountain.....	53
Washington.....	42	Winstead, W. R., leveling by.....	27
Watson Mountain.....	53	Wolfpen Gap.....	16
Waverly Hall.....	34	Wolfpen Ridge.....	53
Wayne County.....	7	Woodbury.....	34
Westlake.....	11	Woodstock.....	29
West Point.....	36	Wrightsboro.....	43
Wheaton.....	13		
White.....	39	Y.	
White Plains.....	47, 49	Yonah Mountain.....	53
Whitestone.....	26	Youngcane.....	17
White Sulphur Springs.....	35	Young Harris.....	19
Whitesville.....	36		
Whitfield County.....	7	Z.	
		Zebulon quadrangle.....	33-34





