

BZS/W 5270



~~C 1127920~~

Disle 7405

SAILING SCHEDULE OF POLISH PORTS

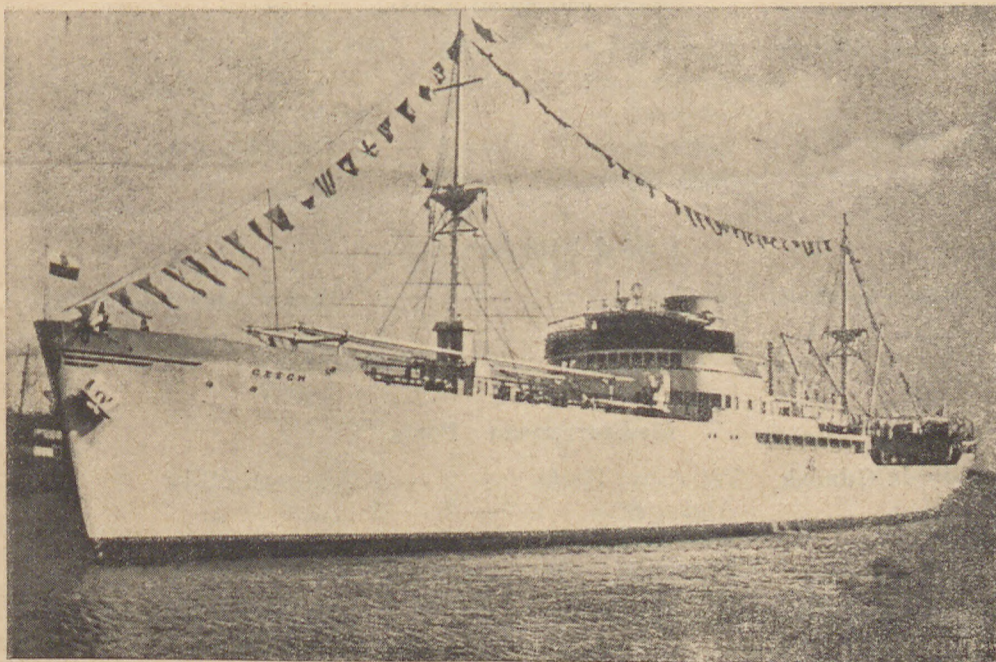


SZCZECIN



GDYNIA-GDAŃSK

1.12.1949 — 10.1.1950



M/S Czech

3.200 DWT

Refrigerated cargo liner

Gdynia — London

MINISTRY OF SHIPPING

FREQUENCY OF SHIPPING LINES.

Baltic and Scandinavian Ports.

| | | | |
|----------------------|-------------------------|-----------|----------------------|
| Gdynia/Gdańsk | Göteborg | — 5 — 6 | times monthly |
| | Malmö | — 3 — 4 | „ „ |
| | Stockholm | — | once weekly |
| | Helsinki | — | „ „ |
| | Copenhagen | — 10 — 12 | times monthly |
| | Oslo | — 3 — 4 | „ „ |
| | West Norwegian Ports | — 6 | „ „ |
| Szczecin | Malmö | — 3 — 4 | times monthly |
| | Göteborg | — 3 — 4 | „ „ |
| | Stockholm | — 2 | „ „ |
| | Oslo | — 1 — 2 | „ „ |
| | Copenhagen | — 1 — 2 | „ „ |
| | Trelleborg | — 2 | „ weekly (Ferryboat) |

West European Ports.

| | | | |
|----------------------|-----------|---------|---------------|
| Gdynia/Gdańsk | Rotterdam | — 6 — | times monthly |
| | Amsterdam | — 4 — | „ „ |
| | Antwerp | — 8 — 9 | „ „ |
| Szczecin | Rotterdam | — 3 — | times monthly |
| | Antwerp | — 3 — | „ „ |

United Kingdom Ports.

| | | | |
|----------------------|-------------|-------|---------------|
| Gdynia/Gdańsk | London | — 4 — | times monthly |
| | Hull | — 4 — | „ „ |
| | Southampton | — | once monthly |

Mediterranean Ports.

| | | | |
|----------------------|-----------------|---------|---------------|
| Gdynia/Gdańsk | Tel Aviv, Haifa | — 2 — 3 | times monthly |
| | Alexandria | — 2 — 3 | „ „ |
| | Istanbul | — 2 — 3 | „ „ |
| | Beyrouth | — | once monthly |
| | Izmir | — „ | „ |

USA Atlantic Ports.

| | | | |
|----------------------|--------------|---------|---------------|
| Gdynia/Gdańsk | New York | — 6 — 7 | times monthly |
| | Baltimore | — 4 | „ „ |
| | Philadelphia | — 4 | „ „ |
| Szczecin | New York | — 1 — 2 | times monthly |
| | Boston | — 1 — 2 | „ „ |
| | Philadelphia | — 1 — 2 | „ „ |
| | Baltimore | — 1 — 2 | „ „ |
| | Hampton | — 1 — 2 | „ „ |

Gulf Ports.

| | | | | |
|---------------|-------------|---------|-------|---------|
| Gdynia/Gdańsk | Galveston | — 2 — 3 | times | monthly |
| | Houston | — 2 — 3 | ” | ” |
| | New Orleans | — 2 — 3 | ” | ” |

South America Pacific Ports.

| | | | | |
|---------------|---------------|---|------|---------|
| Gdynia/Gdańsk | La Guayra | — | once | monthly |
| | Porto Cabello | — | ” | ” |
| | Callao | — | ” | ” |
| | Arica | — | ” | ” |
| | San Antonio | — | ” | ” |
| | Valparaiso | — | ” | ” |
| | Punta Arenas | — | ” | ” |

South America Atlantic Ports.

| | | | | |
|---------------|----------------|---|------|---------|
| Gdynia/Gdańsk | Rio de Janeiro | — | once | monthly |
| | Buenos Aires | — | ” | ” |
| | Santos | — | ” | ” |
| | Montevideo | — | ” | ” |

Hindustan and Pakistan Ports.

| | | | | |
|---------------|----------|---------|-------|---------|
| Gdynia/Gdańsk | Karachi | — 2 — 3 | times | monthly |
| | Bombay | — 2 — 3 | ” | ” |
| | Calcutta | — 2 — 3 | ” | ” |
| | Colombo | — 2 — 3 | ” | ” |
| | Madras | — 2 — 3 | ” | ” |

Far East Ports.

| | | | | |
|---------------|-----------|---------|-------|---------|
| Gdynia/Gdańsk | Aden | — 3 — 4 | times | monthly |
| | Penang | — 1 — 2 | ” | ” |
| | Singapore | — 1 — 2 | ” | ” |
| | Hong Kong | — 1 — 2 | ” | ” |
| | Bangkok | — 1 — 2 | ” | ” |
| | Rangoon | — 1 — 2 | ” | ” |
| | Shanghai | — 1 — 2 | ” | ” |
| | Kobe | — 1 — 2 | ” | ” |

Australia Ports.

| | | | | |
|---------------|------------|---|------|---------------|
| Gdynia/Gdańsk | Sydney | — | once | in two months |
| | Melbourne | — | ” | ” |
| | Freemantle | — | ” | ” |
| | Brisbane | — | ” | ” |
| | Adelaide | — | ” | ” |

South Africa Ports

| | | | | |
|---------------|----------------|---|------|---------|
| Gdynia/Gdańsk | Durban | — | once | monthly |
| | Port Elisabeth | — | ” | ” |
| | Cape Town | — | ” | ” |
| | East London | — | ” | ” |

| VESSEL | SAILING PORT | PORTS OF CALL | OWNER |
|---|--|---|---|
| BALTIC AND | | | |
| M/S „Narew*) S/s Alfa | Gdynia Gdynia | Göteborg, Copenhagen Stockholm | Żegluga Polska S. A. A/B Coasting, Göteborg |
| S/S „Mira“ | Gdańsk | Helsinki | Finska Angfartygs A/B, Helsinki |
| S/S „Falken“*) | Gdynia | Copenhagen | Det Forenede D/S, A/S Copenhagen |
| Ferryboat M/S Oksywie*) | Szczecin Gdynia | Trelleborg Malmö, Copenhagen, Gö- teborg, Oslo | S. J. Żegluga Polska S. A. |
| Ferryboat M/S „Hansy“ M/S „Falken“*) | Szczecin Gdynia Gdynia | Trelleborg Stockholm Malmö, Göteborg | S. J. — Hallands Angb. A/B Göteborg |
| S/S „Śląsk“ (**) S/S „Falken“ (**) | Gdańsk Gdynia | Helsinki Copenhagen | Żegluga Polska S. A. Det Forenede D/S A/S Copenhagen |
| Ferryboat M/S Oksywie*) | Szczecin Szczecin | Trelleborg Malmö, Copenhagen, Gö- teborg, Oslo | S. J. Żegluga Polska S. A. |
| M/S Lillen | Gdynia | Kristiansand, Bergen, Stavanger, Trond- heim, Haugesund | Neptun, Bergen |
| M/S „Mailand“ (**) | Gdynia | Oslo, Fredrikstad, Drammen | Fred Olsen & Co Oslo |
| Ferryboat M/S „Narew“ S/S „Hel“ (*) M/S „Alfa“ | Szczecin Szczecin Gdynia Gdynia | Trelleborg Stockholm Göteborg, Copenhagen Stockholm | S. J. Żegluga Polska Żegluga Polska A/B Coasting, Göteborg |
| S/S „Mira“ | Gdańsk | Helsinki | Finska Angfartygs A/B Helsinki |
| S/S „Falken“ (*) | Gdynia | Copenhagen | Det Forenede D/S A/S Copenhagen |
| Ferryboat S/S „Ulsnes“ | Szczecin Gdynia | Trelleborg Stavanger, Bergen, Trondheim | S. J. Det Stavangerske D/S, Stavanger |
| Ferryboat M/S „Hansy“ M/S Falken*) | Szczecin Gdynia Gdynia | Trelleborg Stockholm Malmö, Göteborg | S. J. — Hallands Angb. A/B Göteborg |

| AGENT | DUE | SAILS | ACCEPTS ANY CARGO ON THROUGH BILL OF LADING TO THE PORTS OF: |
|-------|-----|-------|--|
|-------|-----|-------|--|

SCANDINAVIAN PORTS

| | | | |
|-----------|-------|-------|--|
| G. A. L. | 28.11 | 2.12 | East Africa, Arabia, Sudan (2) |
| Agmor | 28.11 | 2.12 | |
| Baltica | 28.11 | 3.12 | |
| Gama | 1.12 | 3.12 | Iceland (1) |
| P. K. P. | 3.12 | 4.12 | |
| G. A. L. | 4.12 | 8.12 | |
| P. K. P. | 6.12 | 7.12 | |
| G. A. L. | 4.12 | 9.12 | |
| Agmor | 6.12 | 9.12 | USA Atlantic coast, Canada, Great Lakes, Gulf Ports, West Indies, South and West Africa, Australia (2) |
| G. A. L. | 5.12 | 10.12 | |
| Gama | 8.12 | 10.12 | Iceland (1) |
| P. K. P. | 10.12 | 11.12 | |
| G. A. L. | 10.12 | 11.12 | East Africa, Arabia, Sudan (2) |
| Navigator | 10.12 | 12.12 | |
| Agmor | 10.12 | 13.12 | Australia, USA West and East coast, Canada, South Africa, India, Pakistan (8). |
| P. K. P. | 13.12 | 14.12 | |
| G. A. L. | 12.12 | 16.12 | |
| G. A. L. | 12.12 | 16.12 | East Africa, Arabia, Sudan (2) |
| Agmor | 12.12 | 16.12 | |
| Baltica | 12.12 | 17.12 | |
| Gama | 15.12 | 17.12 | Iceland (1) |
| P. K. P. | 17.12 | 18.12 | |
| Agmor | 15.12 | 18.12 | |
| P. K. P. | 20.12 | 21.12 | |
| G. A. L. | 18.12 | 23.12 | |
| Agmor | 20.12 | 23.12 | USA Atlantic coast, Canada, Great Lakes, Gulf Ports, West Indies, South and West Africa, Australia (2) |

| VESSEL | SAILING PORT | PORTS OF CALL | OWNER |
|---|------------------------------|--|---|
| S/S „Falken“*) | Gdynia | Copenhagen | Det Forenede D/S, A/S Copenhagen |
| S/S „Śląsk“(**) Ferryboat M/S „Mailand“(**) | Gdańsk Szczecin Gdynia | Helsinki Trelleborg Oslo, Fredrikstad, Drammen | Żegluga Polska S. A. S. J. Fred Olsen & Co., Oslo |
| Ferryboat M/S Oksywie*) | Szczecin Gdynia | Trelleborg Malmö, Copenhagen, Gö- teborg, Oslo | S. J. Żegluga Polska |
| M/S „Alfa“ | Gdynia | Stockholm | A/B Coasting, Göteborg |
| S/S „Hel“*) M/S „Narew“ M/S „Lillen“ | Gdynia Szczecin Gdynia | Göteborg, Copenhagen Stockholm Kristiansand, Bergen, Stavanger, Trondheim, Haugesund | Żegluga Polska S. A. Żegluga Polska S. A. Neptun, Bergen |
| S/S „Mira“ | Gdańsk | Helsinki | Finska Angfartygs A/B, Helsinki |
| S/S „Falken“*) | Gdynia | Copenhagen | Det Forenede D/S A/S Copenhagen |
| Ferryboat M/S Oksywie*) | Szczecin Szczecin | Trelleborg Malmö, Copenhagen, Gö- teborg, Oslo | S. J. Żegluga Polska S. A. |
| Ferryboat M/S „Falken“(**) | Szczecin Gdynia | Trelleborg Malmö, Göteborg | S. J. Hallands Angb. A/B Göteborg |
| M/S „Hansy“ S/S „Śląsk“(**) S/S „Falken“*) | Gdynia Gdańsk Gdynia | Stockholm Helsinki Copenhagen | — Żegluga Polska S. A. Det Forenede D/S A/S Copenhagen |
| Ferryboat S/S „Ulsnes“ | Szczecin Gdynia | Trelleborg Stavanger, Bergen, Trondheim | S. J. Det Stavangerske D/S Stavanger |
| M/S Mailand*) | Gdynia | Oslo, Fredrikstad, Drammen | Fred Olsen and Co, Oslo |
| WEST | | | |
| M/S „Draco“**)0) M/S „Warmia“*) | Gdynia Gdynia | Amsterdam Rotterdam, Antwerp, Hamburg, Szczecin | K. N. S. M. Żegluga Polska S. A. |
| M/S „Jacoba“, Catharina*) | Gdynia | Amsterdam, Rotterdam, Antwerp | N. V. Polen Lijn, Rotter- dam |

| AGENT | DUE | SAILS | ACCEPTS ANY CARGO ON THROUGH BILL OF LADING TO THE PORTS OF: |
|-----------------------|-------|-------|---|
| Gama | 22.12 | 24.12 | Iceland (1) |
| G. A. L. | 19.12 | 24.12 | Australia, USA West and East Coast, Canada, South Africa, India, Pakistan (8). |
| P. K. P. | 24.12 | 25.12 | |
| Agmor | 24.12 | 27.12 | |
| P. K. P. | 27.12 | 28.12 | East Africa, Arabia, Sudan (2) |
| G. A. L. | 24.12 | 29.12 | |
| Agmor | 26.12 | 30.12 | East Africa, Arabia, Sudan (2) |
| G. A. L. | 26.12 | 30.12 | |
| G. A. L. | 26.12 | 30.12 | |
| Navigator | 27.12 | 31.12 | |
| Baltica | 26.12 | 31.12 | Iceland (1) |
| Gama | 29.12 | 31.12 | |
| P. K. P. | 31.12 | 1.1 | East Africa, Arabia, Sudan (2) |
| G. A. L. | 30.12 | 1.1 | |
| P. K. P. | 3.1 | 4.1 | USA Atlantic coasts, Canada, Great Lakes, Gulf Ports, West Indies, South and West Africa, Australia (2) |
| Agmor | 3.1 | 6.1 | |
| G. A. L. | 1.1 | 6.1 | Iceland (1) |
| G. A. L. | 2.1 | 7.1 | |
| Gama | 5.1 | 7.1 | |
| P. K. P. | 7.1 | 8.1 | Australia, USA—West and East Coast, Canada, South Africa, India, Pakistan (8) |
| Agmor | 5.1 | 8.1 | |
| Agmor | 7.1 | 10.1 | |
| EUROPEAN PORTS | | | |
| Navigator | 5.12 | 6.12 | All ports of the world (4) |
| G. A. L. | 5.12 | 8.12 | India, Pakistan, Ceylon, Far East, Australia, USA — Pacific, Atlantic and Gulf Ports, Central America, Persian Gulf (3, 5) |
| Rummel and Burton | 10.12 | 12.12 | USA, Canada, Great Lakes, Central and South America, Gulf Ports, Far East, Australia, Africa, India, Indonesia, Iceland (3, 4, 5) |

| VESSEL | SAILING PORT | PORTS OF CALL | OWNER |
|----------------------------------|------------------|---|-------------------------------------|
| M/S „Mazury“*) | Gdynia | Hamburg, Rotterdam, Antwerp | Żegluga Polska S. A. |
| M/S „Mazury“*) | Szczecin | Hamburg, Rotterdam, Antwerp | Żegluga Polska S. A. |
| M/S „Draco“*) 0) S/S Puck*) | Gdynia Gdynia | Amsterdam Rotterdam, Antwerp, Hamburg, Szczecin | K. N. S. M. Żegluga Polska S. A. |
| M/S „Jacoba“, Catharina*) | Gdynia | Amsterdam, Rotterdam, Antwerp | N. V. Polen Lijn, Rotter- dam |
| M/S „Warmia“*) | Gdynia | Hamburg, Rotterdam, Antwerp | Żegluga Polska S. A. |
| M/S Warmia*) | Szczecin | Hamburg, Rotterdam, Antwerp | Żegluga Polska S. A. |
| M/S „Draco“*) 0) M/S Mazury*) | Gdynia Gdynia | Amsterdam Rotterdam, Antwerp. Hamburg, Szczecin | K. N. S. M. Żegluga Polska |

UNITED

| | | | |
|---------------------|--------|--------|----------------------------------|
| M/S „Baltavia“*)**) | Gdynia | London | Unit. Bal. Corp. Ltd. London |
| S/S „Baltraffic“ | Gdynia | Hull | Unit. Bal. Corp. Ltd. London |
| M/S „Czech“*)**) | Gdynia | London | Pol.-Bryt. Tow. Okrętowe |
| S/S „Lublin“ | Gdynia | Hull | Pol. Bryt. Tow. Okrętowe |
| M/S „Baltavia“*)**) | Gdynia | London | Unit. Bal. Corp. Ltd. London |
| S/S „Baltraffic“ | Gdynia | Hull | Unit. Bal. Corp. Ltd. London |
| M/S „Czech“*)**) | Gdynia | London | Pol.-Bryt. Tow. Okrętowe |
| S/S „Lublin“ | Gdynia | Hull | Pol.-Bryt. Tow. Okrętowe |
| M/S „Baltavia“*)**) | Gdynia | London | Unit. Bal. Corp. Ltd. London |
| S/S „Baltraffic“ | Gdynia | Hull | Unit. Balt. Corp. Ltd. London |

| AGENT | DUE | SAILS | ACCEPTS ANY CARGO ON THROUGH BILL OF LADING TO THE PORTS OF: |
|-------------------|-------|-------|---|
| G. A. L. | 10.12 | 14.12 | India, Pakistan, Ceylon, Far East, Australia, USA — Pacific, Atlantic and Gulf Ports, Central America, Persian Gulf (3, 5) |
| G. A. L. | 15.12 | 16.12 | India, Pakistan, Ceylon, Far East, Australia, USA — Pacific, Atlantic and Gulf Ports, Central America, Persian Gulf (3, 5) |
| Navigator | 19.12 | 20.12 | All ports of the world (4) |
| G. A. L. | 16.12 | 21.12 | India, Pakistan, Ceylon, Far East, Australia, USA — Pacific, Atlantic and Gulf Ports, Central America, Persian Gulf (3, 5) |
| Rummel and Burton | 24.12 | 26.12 | USA, Canada, Great Lakes, Central and South America, Gulf Ports, Far East, Australia, Africa, India, Indonesia, Iceland (3, 4, 5) |
| G. A. L. | 24.12 | 28.12 | India, Pakistan, Ceylon, Far East, Australia, USA — Pacific, Atlantic and Gulf Ports, Central America, Persian Gulf (3, 5) |
| G. A. L. | 29.12 | 30.12 | India, Pakistan, Ceylon, Far East, Australia, USA — Pacific, Atlantic and Gulf Ports, Central America, Persian Gulf (3, 5) |
| Navigator | 4.1 | 5.1 | All ports of the world (4) |
| G. A. L. | 31.12 | 5.1 | India, Pakistan, Ceylon, Far East, Australia, USA — Pacific, Atlantic and Gulf Ports, Central America, Persian Gulf (3,5) |

KINGDOM PORTS

| | | | |
|-----------------------|-------|-------|--|
| Pol. Unit. Bal. Corp. | 28.11 | 1.12 | All ports of the world (6) |
| Pol. Unit. Bal. Corp. | 29.11 | 2.12 | |
| G. A. L. | 4.12 | 8.12 | India, Pakistan, Ceylon, Far East, Australia, South Africa, Portuguese East Africa (6) |
| G. A. L. | 5.12 | 9.12 | |
| Pol. Unit. Bal. Corp. | 12.12 | 15.12 | All ports of the world (6) |
| Pol. Unit. Bal. Corp. | 13.12 | 16.12 | |
| G. A. L. | 18.12 | 22.12 | India, Pakistan, Ceylon, Far East, Australia, South Africa, Portuguese East Africa (6) |
| G. A. L. | 19.12 | 23.12 | |
| Pol. Unit. Bal. Corp. | 26.12 | 29.12 | All ports of the world (6) |
| Pol. Unit. Bal. Corp. | 27.12 | 30.12 | |

| VESSEL | SAILING PORT | PORTS OF CALL | OWNER |
|-------------------|--------------|---------------|--------------------------|
| M/S „Czech(**)**) | Gdynia | London | Pol.-Bryt. Tow. Okrętowe |
| S/S Lublin | Gdynia | Hull | Pol.-Bryt. Tow. Okrętowe |

MEDITERRANEAN

| | | | |
|--------------------------|--------|--------------------------------|------------------------------------|
| S/S „Opole(***) | Gdańsk | Tel Aviv, Haifa | Żegluga Polska |
| M/S Bardaland | Gdynia | Alexandria, Beyrouth | Svenska Orient Linien Göteborg |
| M/S XXX | Gdynia | Tel Aviv, Haifa | Svenska Orient Linien, Göteborg |
| M/S Lewant(**) | Gdańsk | Tel Aviv, Haifa | Żegluga Polska |
| M/S Stalowa Wola(***) | Gdańsk | Istanbul, Izmir, Alexandria | G. A. L. |
| S/S „Olsztyn(***) | Gdańsk | Istanbul, Izmir, Alexandria | Żegluga Polska |
| M/S „Lechistan“ | Gdańsk | Tel Aviv, Haifa | Żegluga Polska |

USA

| | | | |
|--------------------------------|--------|--|---|
| S/S „Mormac- york(**) (***) | Gdynia | New York, Baltimore Philadelphia | Moore - Mc Cormac Lines Inc. New York |
| S/S „Mormac- elm(**) (***) | Gdynia | New York, Baltimore, Philadelphia | Moore Mac Cormac Li- nes Inc. New York |
| S/S „Mormac- mail(**) (***) | Gdynia | New York, Baltimore Philadelphia | Moore Mc Cormac Li- nes Inc. New York |
| M/S „Jutlandia(**) | Gdynia | Copenhagen, New York | The East Asiatic Co Copenhagen |
| S/S „Mormac- oac(*) (***) | Gdynia | New York, Baltimore, Philadelphia | Moore - Mc Cormac Lines Inc. New York |
| M/S „Batory(***) | Gdynia | Copenhagen, South- ampton, New York | G. A. L. |

GULF

| | | | |
|-------------------|--------|--|---------------------------------------|
| S/S Letitia Lykes | Gdynia | Galveston, Houston, New Orleans, Mobile | Lykes Bros., New Or- leans |
| M/S „Rydboholm“ | Gdynia | Galveston, Houston, New Orleans, Mobile | Svenska America Li- nien, Göteborg |

SOUTH AMERICA

| | | | |
|------------|--------|--|------------------------------------|
| M/S Geisha | Gdynia | Puerto Cabello, Barran- quilla, Cristobal, Val- paraiso, San Antonio | Knut Knutsen O. A. S. Haugesund |
|------------|--------|--|------------------------------------|

| AGENT | DUE | SAILS | ACCEPTS ANY CARGO ON THROUGH BILL OF LADING TO THE PORTS OF: |
|------------------------------------|-------|-------|---|
| G. A. L. | 1.1 | 5.1 | India, Pakistan, Ceylon, Far East Australia, South Africa, Portuguese East Africa (6) |
| G. A. L. | 2.1 | 6.1 | |
| PORTS | | | |
| G. A. L. | 21.11 | 3.12 | |
| Agmor | 10.12 | 11.12 | |
| Agmor | 14.12 | 16.12 | |
| G. A. L. | 10.12 | 17.12 | |
| G. A. L. | 10.12 | 17.12 | |
| G. A. L. | 27.12 | 5.1 | |
| G. A. L. | 30.12 | 7.1 | |
| ATLANTIC PORTS | | | |
| American Scantic Line in Poland | 6.12 | 7.12 | USA, Canada, South America (7) |
| American Scantic Line in Poland | 10.12 | 11.12 | USA, Canada, South America (7) |
| American Scantic Line in Poland | 20.12 | 22.12 | USA, Canada, South America (7) |
| Baltica | 20.12 | 23.12 | Cuba, Jamaica, Columbia, Guatemala, El Salvador, Honduras, Costa Rica, Panama (7) |
| American Scantic Line in Poland | 24.12 | 26.12 | USA, Canada, South America (7) |
| G. A. L. | 21.12 | 5.1 | |
| PORTS | | | |
| Agmor | 2.12 | 3.12 | |
| Agmor | 3.12 | 5.12 | |
| PACIFIC PORTS | | | |
| Agmor | 12.12 | 13.12 | |

| VESSEL | SAILING PORT | PORTS OF CALL | OWNER |
|----------------------|--------------|---|-------------------------------------|
| M/S Martin Bakke | Gdynia | Puerto Cabello, Barranquilla, Cristobal, Valparaiso, San Antonio | Krøt Knutsen O. A. S., Haugesund |
| SOUTH AMERICA | | | |
| S/S „Pulaski“ (***) | Gdynia | Antwerp, Rio de Janeiro, Santos, Buenos Aires, Montevideo | G. A. L. |
| SOUTH | | | |
| M/S Mattawunga | Gdynia | Durban, Port Elizabeth, Cape Town | Rederi A/B Transatlant., Göteborg |
| M/S Torrens | Gdynia | Durban, Port Elisabeth, Cape Town | W. Wilhelmsen, Oslo |
| HINDUSTAN | | | |
| M/S Nordwahl | Gdynia | Aden, Karachi, Bombay, Colombo, Madras, Rangoon, Calcutta | The East Asiatic Co., Copenhagen |
| M/S Fermmoor | Gdynia | Aden, Karachi, Bombay, Colombo, Madras, Rangoon, Calcutta | The East Asiatic Co., Copenhagen |
| FAR EAST | | | |
| M/S Selandia | Gdynia | Aden, Colombo, Penang, P. Swettenham, Singapore, Saigon, Bangkok. | The East Asiatic Co Copenhagen |
| AUSTRALIA | | | |
| M/S Mattawunga | Gdynia | Sydney, Melbourne, Adelaide, Fremantle, Brisbane | Rederi A/B Transatlant., Göteborg |
| M/S Torrens | Gdynia | Sydney, Melbourne, Adelaide, Fremantle, Brisbane | W. Wilhelmsen, Oslo |

Ships and dates subject to alteration without notice

| AGENT | DUE | SAILS | ACCEPTS ANY CARGO ON THROUGH BILL OF LADING TO THE PORTS OF: |
|---------------------------|-------|-------|---|
| Agmor | 20.12 | 21.12 | |
| ATLANTIC PORTS | | | |
| G. A. L. | 20.11 | 15.12 | |
| AFRICA PORTS | | | |
| Agmor | 18.12 | 21.12 | |
| Agmor | 29.12 | 31.12 | |
| AND PAKISTAN PORTS | | | |
| Baltica | 2.12 | 4.12 | |
| Baltica | 5.1 | 7.1 | |
| PORTS | | | |
| Baltica | 10.12 | 12.12 | |
| PORTS | | | |
| Agmor | 18.12 | 21.12 | |
| Agmor | 29.12 | 31.12 | |

R e m a r k s:

- *) accepts any cargo for overseas on through bill of lading with transshipment in:
- | | | |
|----------------|---------------|--------------|
| (1) Copenhagen | (3) Rotterdam | (5) Antwerp |
| (2) Göteborg | (4) Amsterdam | (6) London |
| | | (7) New York |
| | | (8) Oslo |

- ***) accepts passengers too.
- ****) accepts any cargo to all localities U. S. A. and Canada as well as to East and West coasts of South America on through bill of lading.
- o) accepts any cargo for Switzerland and Paris with transshipment in Amsterdam.

NAMES AND ADDRESSES

Ministry of Shipping

Warsaw, Filtrowa 57, phone: 4.0480

AREA OFFICES OF THE MINISTRY OF SHIPPING

Gdańsk Maritime Office
(Gdański Urząd Morski)

— Gdańsk — Wrzeszcz, Morska 22,
phone: 41368

Szczecin Maritime Office
(Szczeciński Urząd Morski)

— Szczecin, Wały Chrobrego 1,
phone: 36-01, 2, 3, 4

Fishery Office
(Morski Urząd Rybacki)

— Gdynia, Waszyngtona 32' phone: 2.7188

Fishery Office
(Morski Urząd Rybacki)

— Szczecin, Zygm. Starego 4, phone: 29-55

REPRESENTATIVES ABROAD

Polish Shipping Mission

— Whitcomb Street, London W. C. 2,
phone: Whitehall 0718

Polish Shipping Mission

— Hamburg, Alstereck — Jungfernstieg

Polish Shipping Mission

— Amsterdam, I. W. Brouwersplein 7,
phone: 200-92

Maritime Attache for Scandinavian Countries
at Polish Legation in Sweden

— Stockholm, Falugatan 9, phone: 31.7027

Representation of Polish Railways and Ports

— Prague XII, Spanelska 8,
phone: 398-04, 397-68

SHIPOWNERS

Gdynia — America Shipping Lines Ltd.
(Gdynia — Ameryka Linie Żeglugowe S. A.)

— Gdynia, Portowa 15, phone: 29-01 (10 lines)

Żegluga Polska Ltd.

— Gdynia, Portowa 15

Polish — British Steamship Co.

— Gdynia, Portowa 15

Bałtycka Spółka Okrętowa

— Gdynia, Derdowskiego 7

W. Bartosiak

— Gdynia, Derdowskiego 7

Coastal Navigation Co. in Gdańsk

— Gdynia, Al. Zjednoczenia 2

Coastal Navigation Co. in Szczecin

— Szczecin, Zygm. Starego 5, phone: 2909

SHIPYARDS

United Polish Shipyards
(Zjednoczone Stocznie Polskie)

— Gdańsk, Jana z Kolna 31, phone: 420-41

Shipyards in Szczecin
(Stocznia Szczecińska)

— Szczecin,

Żegluga Morska

— Szczecin,

Fishing Shipyards Co. Ltd.
(Stocznie Rybackie Sp. z o. o.)

— Gdynia, Waszyngtona 5, phone: 219-52

STEVEDORES

Workers Transloading Company „Portorob“
Ltd.

— Gdańsk - Wrzeszcz, Grunwaldzka 76/73,
phone: 418-61

(Robotnicze Przedsiębiorstwo Przeładunkowe
„Portorob“ sp. z o. o.)

Branches: — Gdynia, Polska street 21, phone :38-41
— Gdańsk - New Port, Solec 1, phone: 424-82

SHIPBROKERS

- Shipbrokers Cooperative „Agmor“
Harbour Offices: — Gdynia, Derdowskiego 7, phone: 33-00
— Gdynia, Polska street Warehouse „Panta-
rei“, phone: 33-02
— Gdańsk, Zamknięta 29, phone: 424-13
— Szczecin, Wielka 5, phone: 32-35
- American Scantic Line in Poland Co. Ltd. — Gdynia, Nabrzeże Polskie, phone: 18-13
- Baltic Shipping Agency „Baltica“ Ltd.
Branches: — Gdynia, 10 lutego 24, phone: 49-92
— Gdańsk, Burtona 8, phone: 4.15-10
— Szczecin, Malczewskiego 8, phone: 27-33
— Ustka, Stalina 37, phone: 247
— Darłowo, Kąpielowa 6
— Kołobrzeg
- Gdynia — America Shipping Lines Ltd.
(Gdynia — Ameryka Linie Żeglugowe S. A.) — Gdynia, Portowa 15, phone: 29-01 (10 lines)
- „Gama“ Shipping and Insurance Agency Ltd.
Branches: — Gdynia, Starowiejska 40, phone: 1222
— Gdańsk, New Port Parafialna 9 phone: 42084
— Szczecin, Parkowa 6, phone: 2644
- „Navigator“, Polish Shipping Company Ltd.
Branches: — Gdynia, Starowiejska 47, phone: 1021
— Gdańsk — New Port, Oliwska 53/54,
phone: 42198
— Szczecin, Św. Wojciecha 1, phone: 2020
— Ustka, Stalina 39, phone: 397
— Darłowo, Kwiatkowskiego 48, phone: 48
— Kołobrzeg, Wojewódzka 13
- Polish United Baltic Corporation — Gdynia, Dom Izby Przem. - Handl.,
phone: 31-52
- Rummel & Burton Co Ltd. Shipbrokers Agency
Branches: — Gdynia, Derdowskiego 7, phone: 2242
— Gdańsk — New Port, phone 425-68
— Szczecin, Ledóchowskiego 13, phone 27-22
- General Mutual Insurance Association
Bureau of Maritime Insurance Brokers — Gdynia, Derdowskiego 7, phone: 5106
- The Polish Shipbrokers Association
(Polski Związek Maklerów Okrętowych) — Gdynia, Świętojańska 23, phone: 15-25

SHIPCHANDLERS

- „Baltona“ Co Ltd. — Gdynia Harbour, Nabrzeże Francuskie (The
French Quay), phone: 3722
— Gdynia Harbour, Warehouse No 5, Ham-
ber 309
— Gdańsk — New Port, Zamknięta 29/30,
phone: 4.2187
— Szczecin, Baden Powella 21, phone: 2627
- P. C. H. (State Trading Centre)
(Państwowa Centrala Handlowa)
Branches: — Gdynia, Świętojańska 32, phone: 4303
— Szczecin, Krzysztofa Kolumba 74, phone: 3342
— Ustka, Stalina 35
— Darłowo, Powstańców 24, phone: 148
— Kołobrzeg, Wojewódzka 39, phone: 151
— Świnoujście, Władysława IV 41, phone: 834
- Union of Urban Cooperative Societies „Społem“,
Shipchandlers — Gdynia, Polska 13, phone: 4317; 2945
(Centrala Spółdzielni Spożywców „Społem“ —
Shipchandlers)

FORWARDING AGENTS

- C. Hartwig S/A, International Forwarding — Gdynia, Rotterdamska 3, phone: 1446
- Branches: — Gdańsk — New Port, Solec 1, phone: 42717
— Gdańsk—Wrzeszcz, Grunwaldzka 20,
phone: 41571
— Szczecin, Plac Zwycięstwa, phone: 2798
- „Spedrapid“ — Gdynia, Derdowskiego 7, phone: 1172
Branches: — Szczecin, Plac Żołnierza Polskiego 16
phone: 3035
— Gdańsk, Władysława IV 12b
- „Spedytor“ — Gdynia, Rotterdamska 9, phone: 2470
Branches: — Gdańsk — New Port, Marynarki Polskiej 12,
phone: 4.2579
— Szczecin, Niedziałkowskiego 23, phone: 2610.

VARIOUS

- Gdańsk, Elżbietańska 11, phone: 311-65

