

DZS/u 5270



C 1127920

Dis/R 2408

# SAILING SCHEDULE

## OF POLISH PORTS

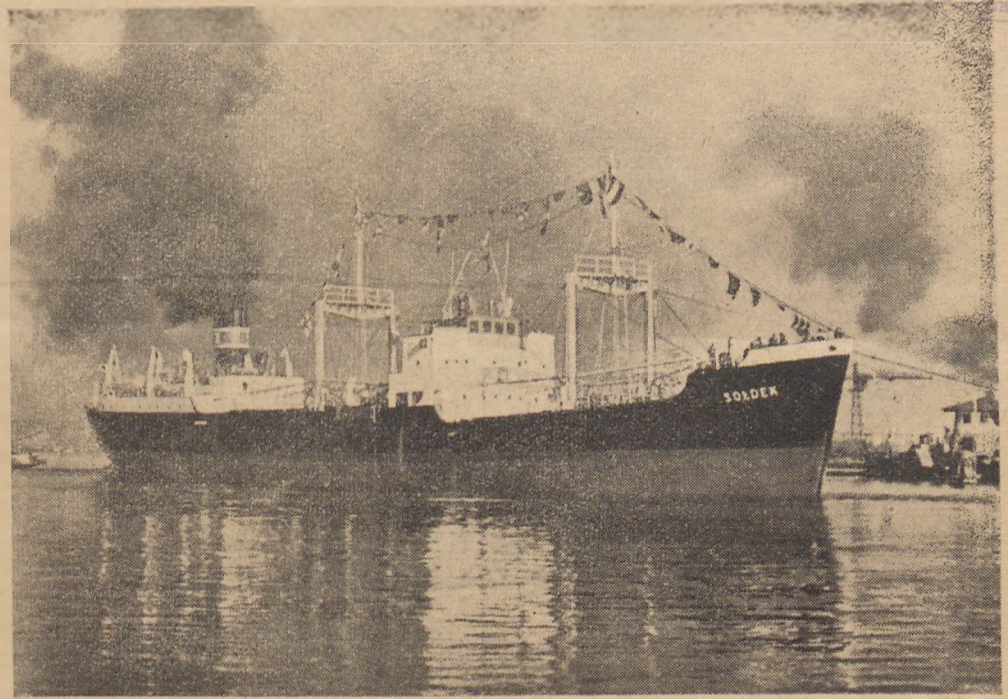


SZCZECIN



GDYNIA-GDAŃSK

1.2. — 10.3.1950



S/S SOLDEK

2.610 DWT

Polish built coal and ore carrier

MINISTRY OF SHIPPING

## FREQUENCY OF SHIPPING LINES.

### Baltic and Scandinavian Ports.

<b>Gdynia/Gdańsk</b>	Göteborg	— 5 — 6	times	monthly
	Malmö	— 3 — 4	„	„
	Stockholm	— once	weekly	„
	Helsinki	—	„	„
	Copenhagen	— 10 — 12	times	monthly
	Oslo	— 3 — 4	„	„
	West Norwegian Ports	— 3	„	„
	East Norwegian Ports	— 2	„	„
	<b>Szczecin</b>	Malmö	— 3 — 4	times
Göteborg		— 3 — 4	„	„
Stockholm		— 2	„	„
Oslo		— 1 — 2	„	„
Copenhagen		— 1 — 2	„	„
Trelleborg		— 2	„	weekly (Ferryboat)

### West European Ports.

<b>Gdynia/Gdańsk</b>	Rotterdam	— 7 —	times	monthly
	Amsterdam	— 4 —	„	„
	Antwerp	— 9 — 10	„	„
	Hamburg	— 4 —	„	„
<b>Szczecin</b>	Rotterdam	— 4 —	times	monthly
	Antwerp	— 4 —	„	„
	Hamburg	— 4 —	„	„

### United Kingdom Ports.

<b>Gdynia/Gdańsk</b>	London	— 4 —	times	monthly
	Hull	— 4 —	„	„
	Southampton	— once	monthly	„

### Mediterranean Ports.

<b>Gdynia/Gdańsk</b>	Tel Aviv, Haifa	— 2 — 3	times	monthly
	Alexandria	— 2 — 3	„	„
	Istanbul	— 2 — 3	„	„
	Beyrouth	— once	monthly	„
	Izmir	— 1 — 2	times	monthly

### USA Atlantic Ports.

<b>Gdynia/Gdańsk</b>	New York	— 7 — 8	times	monthly
	Baltimore	— 5 —	„	„
	Philadelphia	— 4	„	„
<b>Szczecin</b>	New York	— 1 — 2	times	monthly
	Boston	— 1 — 2	„	„
	Philadelphia	— 1 — 2	„	„
	Baltimore	— 1 — 2	„	„
	Hampton	— 1 — 2	„	„
	Halifax	— 1 — 2	„	„

### Gulf Ports.

Gdynia/Gdańsk	Galveston	— 2 — 3	times monthly	
	Houston	— 2 — 3	"	"
	New Orleans	— 2 — 3	"	"
	Havana	— 2 — 3	"	"
	Tampico	— 2 — 3	"	"
	Vera Cruz	— 2 — 3	"	"

### South America Pacific Ports.

Gdynia/Gdańsk	La Guayra	—	once monthly	
	Porto Cabello	—	"	"
	Callao	—	"	"
	Arica	—	"	"
	San Antonio	—	"	"
	Valparaiso	—	"	"
Punta Arenas	—	"	"	

### South America Atlantic Ports.

Gdynia/Gdańsk	Rio de Janeiro	—	once monthly	
	Buenos Aires	—	"	"
	Santos	—	"	"
	Montevideo	—	"	"

### Hindustan and Pakistan Ports.

Gdynia/Gdańsk	Karachi	— 3 — 4	times monthly	
	Bombay	— 3 — 4	"	"
	Calcutta	— 3 — 4	"	"
	Colombo	— 3 — 4	"	"
	Madras	— 3 — 4	"	"
	Rangoon	— 3 — 4	"	"

### Gdynia/Gdańsk Far East Ports.

	Aden	— 3 — 4	times monthly	
	Penang	— 1 — 2	"	"
	Singapore	— 1 — 2	"	"
	Hong Kong	— 1 — 2	"	"
	Bangkok	— 1 — 2	"	"
	Shanghai	— 1 — 2	"	"
	Kobe	— 1 — 2	"	"
	P. Swettenham	— 1 — 2	"	"
	Saigon	— 1 — 2	"	"

### Gdynia/Gdańsk Australia Ports.

	Sydney	—	once in two months	
	Melbourne	—	"	"
	Freemantle	—	"	"
	Brisbane	—	"	"
	Adelaide	—	"	"

### Gdynia/Gdańsk South Africa Ports

	Durban	—	once monthly	
	Port Elisabeth	—	"	"
	Cape Town	—	"	"
	East London	—	"	"

VESSEL	SAILING PORT	PORTS OF CALL	OWNER
--------	--------------	---------------	-------

**BALTIC AND**

S/S Mailand*)	Gdynia	Oslo, Fredrikstad, Drammen	Fred Olsen & Co Oslo
M/S „Bug“ S/S Gripen*)	Gdynia Gdynia	Stockholm Malmö, Göteborg	Żegluga Polska S. A. Hallands Angb. A/B Göteborg
S/S „Słask (***) S/S „Falken (**)	Gdańsk Gdynia	Helsinki Copenhagen	Żegluga Polska S. A. Det Forenede D/S, A/S Copenhagen
S/S Baltic	Gdańsk	Helsinki	Finska Angfartygs A. B, Helsinki
Ferryboat M/S Oksywie*)	Szczecin Gdynia	Trelleborg Malmö, Copenhagen, Gö- teborg, Oslo	S. J. Żegluga Polska S. A.
Ferryboat M/S Gamma/Alfa M/S „Narew“ S/S „Hel (**) Ferryboat M/S Oksywie*)	Szczecin Gdynia Szczecin Gdynia Szczecin Szczecin	Trelleborg Stockholm Stockholm Göteborg, Copenhagen Trelleborg Malmö, Copenhagen, Gö- teborg, Oslo	S. J. A/B Coasting, Göteborg Żegluga Polska S. A. Żegluga Polska S. A. S. J. Żegluga Polska S. A.
S/S „Falken (**)	Gdynia	Copenhagen	Det Forenede D/S A/S Copenhagen
Ferryboat S/S Gripen*)	Szczecin Gdynia	Trelleborg Malmö, Göteborg	S. J. Hallands Angb. A/B Göteborg
M/S „Bug“ M/S Lillen	Gdynia Gdynia	Stockholm Kristiansand, Trondheim, Stavanger, Bergen, Haugesund	Żegluga Polska S. A. Neptun, Bergen
Ferryboat S/S „Słask (***) S/S „Falken (**)	Szczecin Gdańsk Gdynia	Trelleborg Helsinki Copenhagen	S. J. Żegluga Polska S. A. Det Forenede D/S A/S Copenhagen
S/S „Mailand (**)	Gdynia	Oslo, Fredrikstad, Drammen	Fred Olsen & Co., Oslo
S/S „Ulsnes“	Gdynia	Stavanger, Bergen, Trondheim	Det Stavangerske D/S, Stavanger
Ferryboat M/S Gamma/Alfa M/S „Narew“ S/S „Hel (**)	Szczecin Gdynia Szczecin Gdynia	Trelleborg Stockholm Stockholm Göteborg, Copenhagen	S. J. A/B Coasting, Göteborg Żegluga Polska Żegluga Polska

AGENT	DUE	SAILS	ACCEPTS ANY CARGO ON THROUGH BILL OF LADING TO THE PORTS OF:
-------	-----	-------	--

**SCANDINAVIAN PORTS**

Agmor	30.1	2.2	Australia, USA West and East coast, Canada, South Africa, India, Pakistan (8).
G. A. L.	29.1	3.2	
Agmor	31.1	3.2	USA Atlantic coast, Canada, Great Lakes, Gulf Ports, West Indies, South and West Africa, Australia (2)
G. A. L.	30.1	4.2	
Gama	2.2	4.2	Iceland (1)
Baltica	31.1	4.2	
P. K. P.	3.2	4.2	
G. A. L.	4.2	8.2	East Africa, Arabia, Sudan (2)
P. K. P.	7.2	8.2	
Agmor	6.2	10.2	
G. A. L.	6.2	10.2	
G. A. L.	6.2	10.2	East Africa, Arabia, Sudan (2)
P. K. P.	10.2	11.2	
G. A. L.	10.2	11.2	East Africa, Arabia, Sudan (2)
Gama	9.2	11.2	Iceland (1)
P. K. P.	14.2	15.2	
Agmor	14.2	17.1	USA Atlantic coast, Canada, Great Lakes, Gulf Ports, West Indies, South and West Africa, Australia (2)
G. A. L.	12.2	17.2	
Navigator	12.2	18.2	
P. K. P.	17.2	18.2	
G. A. L.	13.2	18.2	
Gama	16.2	18.2	Iceland (1)
Agmor	16.2	19.2	Australia, USA West and East Coast, Canada, South Africa, India, Pakistan (8).
Agmor	17.2	20.2	
P. K. P.	21.2	22.2	
Agmor	20.2	24.2	
G. A. L.	20.2	24.2	
G. A. L.	20.2	24.2	East Africa, Arabia, Sudan (2)

VESSEL	SAILING PORT	PORTS OF CALL	OWNER
S/S Baltic	Gdańsk	Helsinki	Finska Angfartygs A/B Helsinki
Ferryboat S/S „Falken“(**)	Szczecin Gdynia	Trelleborg Copenhagen	S. J. Det Forenede D/S, A/S Copenhagen
Ferryboat M/S Oksywie*)	Szczecin Gdynia	Trelleborg Malmö, Copenhagen, Gö- teborg, Oslo	S. J. Żegluga Polska S. A.
M/S „Bug“ S/S „Falken“(**)	Gdynia Gdynia	Stockholm Copenhagen	Żegluga Polska S. A. Det Forenede D/S A/S Copenhagen
S/S Gripen*)	Gdynia	Malmö, Göteborg	Hallands Angb. A/B Göteborg
S/S „Śląsk“(***) Ferryboat M/S Oksywie*)	Gdańsk Szczecin Szczecin	Helsinki Trelleborg Malmö, Copenhagen, Gö- teborg, Oslo	Żegluga Polska S. J. Żegluga Polska
Ferryboat M/S „Narew“ S/S „Hel“(**) M/S Gamma/Alfa S/S Falken*)	Szczecin Szczecin Gdynia Gdynia Gdynia	Trelleborg Stockholm Göteborg, Copenhagen Stockholm Copenhagen	S. J. Żegluga Polska Żegluga Polska A/B Coasting, Göteborg Det Forenede D/S, A/S
S/S Baltic	Gdańsk	Helsinki	Finska Angfartygs A/B. Helsinki

**WEST**

S/S Puck*)	Gdynia	Rotterdam, Antwerp, Hamburg, Szczecin	Żegluga Polska S. A.
M/S Arak*)	Gdynia	Amsterdam, Rotterdam, Antwerp	N. V. Polen Lijn, Rotter- dam
M/S „Warmia“(**)	Gdynia	Hamburg, Rotterdam, Antwerp	Żegluga Polska
M/S „Warmia“(**)	Szczecin	Hamburg, Rotterdam, Antwerp	Żegluga Polska S. A.
M/S „Draco“(**) 0) M/S „Mazury“(**)	Gdynia Gdynia	Amsterdam Rotterdam, Antwerp. Hamburg, Szczecin	K. N. S. M. Żegluga Polska S. A.

AGENT	DUE	SAILS	ACCEPTS ANY CARGO ON THROUGH BILL OF LADING TO THE PORTS OF:
Baltica	20.2	25.1	
P. K. P.	24.2	25.2	
Gama	23.2	25.2	Iceland (1)
P. K. P.	28.2	1.3	
G. A. L.	25.2	1.3	East Africa, Arabia, Sudan (2)
G. A. L.	26.2	3.3	
Gama	1.3	3.3	Iceland (1)
Agmor	28.2	3.3	USA Atlantic coasts, Canada, Great Lakes, Gulf Ports, West Indies, South and West Africa, Australia (2)
G. A. L.	27.2	4.3	
P. K. P.	3.3	4.3	
G. A. L.	3.3	4.3	East Africa, Arabia, Sudan (2)
P. K. P.	7.3	8.3	
G. A. L.	6.3	10.3	
G. A. L.	6.3	10.3	East Africa, Arabia, Sudan (2)
Agmor	6.3	10.3	
Gama	8.3	10.3	Iceland (1)
Baltica	6.3	11.3	

#### EUROPEAN PORTS

G. A. L.	28.1	2.2	India, Pakistan, Ceylon, Far East, Australia, USA — Pacific, Atlantic and Gulf Ports, Central America, Persian Gulf (3, 5)
Rummel and Burton	4.2	6.2	USA, Canada, Great Lakes, Central and South America, Gulf Ports, Far East, Australia, Africa, India, Indonesia, Iceland (3, 4, 5)
G. A. L.	4.2	8.2	India, Pakistan, Ceylon, Far East, Australia, USA — Pacific, Atlantic and Gulf Ports, Central America, Persian Gulf (3, 5)
G. A. L.	9.2	10.2	India, Pakistan, Ceylon, Far East, Australia, USA, — Pacific, Atlantic and Gulf Ports, Central America, Persian Gulf (3, 5)
Navigator	13.2	14.2	All ports of the world (4)
G. A. L.	11.2	16.2	India, Pakistan, Ceylon, Far East, Australia, USA — Pacific, Atlantic and Gulf Ports, Central America, Persian Gulf (3, 5)

VESSEL	SAILING PORT	PORTS OF CALL	OWNER
M/S Arak*)	Gdynia	Amsterdam, Rotterdam, Antwerp	N. V. Polen Lijn, Rotterdam
S/S Puck*)	Gdynia	Hamburg, Rotterdam, Antwerp	Zegluga Polska S. A.
S/S Puck*)	Szczecin	Hamburg, Rotterdam, Antwerp	Zegluga Polska S. A.
M/S „Draco“(**)0)	Gdynia	Amsterdam	K. N. S. M.
M/S Warmia*)	Gdynia	Rotterdam, Antwerp, Hamburg, Szczecin	Zegluga Polska S. A.
M/S Arak*)	Gdynia	Amsterdam, Rotterdam, Antwerp	N. V. Polen Lijn Rotterdam
M/S „Mazury“(**)*)	Gdynia	Hamburg, Rotterdam, Antwerp	Zegluga Polska
M/S Mazury*)	Szczecin	Hamburg, Rotterdam, Antwerp	Zegluga Polska

**UNITED**

M/S Czech*) **)	Gdynia	London	Pol.-Bryt. Tow. Okrętowe
S/S Lublin**)	Gdynia	Hull	Pol. Bryt. Tow. Okrętowe
M/S „Baltavia“(**)**)*)	Gdynia	London	Unit. Bal. Corp. Ltd. London
S/S „Baltraffic“	Gdynia	Hull	Unit. Bal. Corp. Ltd. London
M/S „Czech“(**)**)*)	Gdynia	London	Pol.-Bryt. Tow. Okrętowe
S/S Lublin**)	Gdynia	Hull	Pol.-Bryt. Tow. Okrętowe
M/S „Baltavia“(**)**)*)	Gdynia	London	Unit. Bal. Corp. Ltd. London
S/S „Baltraffic“	Gdynia	Hull	Unit. Balt. Corp. Ltd. London
M/S „Czech“(**)**)*)	Gdynia	London	Pol.-Bryt. Tow. Okrętowe
S/S Lublin**)	Gdynia	Hull	Pol.-Bryt. Tow. Okrętowe



AGENT	DUE	SAILS	ACCEPTS ANY CARGO ON THROUGH BILL OF LADING TO THE PORTS OF:
Rummel and Burton	18.2	20.2	USA, Canada, Great Lakes, Central and South America, Gulf Ports, Far East, Australia, Africa, India, Indonesia, Iceland (3, 4, 5)
G. A. L.	18.2	22.2	India, Pakistan, Ceylon, Far East, Australia, USA — Pacific, Atlantic and Gulf Ports, Central America, Persian Gulf (3, 5)
G. A. L.	23.2	24.2	India, Pakistan, Ceylon, Far East, Australia, USA — Pacific, Atlantic and Gulf Ports, Central America, Persian Gulf (3, 5)
Navigator	27.2	28.2	All ports of the world (4)
G. A. L.	25.2	2.3	India, Pakistan, Ceylon, Far East, Australia, USA — Pacific, Atlantic and Gulf Ports, Central America, Persian Gulf (3,5)
Rummel & Burton	4.3	6.3	USA, Canada, Great Lakes, Central and South America, Gulf Ports, Far East, Australia, Africa, India, Indonesia, Iceland (3, 4, 5)
G. A. L.	4.3	8.3	India, Pakistan, Ceylon, Far East, Australia, USA — Pacific, Atlantic and Gulf Ports, Central America, Persian Gulf (3, 5)
G. A. L.	9.3	10.3	

#### KINGDOM PORTS

G. A. L.	29.1	2.2	India, Pakistan, Ceylon, Far East, Australia, South Africa, Portuguese East Africa (6)
G. A. L.	30.1	3.2	
Pol. Unit. Bal. Corp.	6.2	9.2	All ports of the world (6)
Pol. Unit. Bal. Corp.	7.2	10.2	
G. A. L.	12.2	16.2	India, Pakistan, Ceylon, Far East, Australia, South Africa, Portuguese East Africa (6)
G. A. L.	13.2	17.2	
Pol. Unit. Bal. Corp.	20.2	23.2	All ports of the world (6)
Pol. Unit. Bal. Corp.	21.2	24.2	
G. A. L.	26.2	2.3	India, Pakistan, Ceylon, Far East Australia, South Africa, Portuguese East Africa (6)
G. A. L.	27.2	3.3	

VESSEL	SAILING PORT	PORTS OF CALL	OWNER
M/S „Baltavia“(**)**)	Gdynia	London	Unit. Bal. Corp. Ltd. London
S/S „Baltraffic“	Gdynia	Hull	Unit. Bal. Corp. Ltd. London

#### MEDITERRANEAN

S/S Petsamo	Gdańsk	Tel Aviv, Haifa	Zim Cargo Lines, Haifa
S/S Kolno	Gdańsk	Antwerp, Istanbul, Izmir, Mersin, Tel Aviv, Alexandria	Żegluga Polska
M/S Morska Wola**)	Gdańsk	Istanbul, Izmir, Alexandria	G. A. L.
S/S „Opole“(***)	Gdańsk	Tel Aviv, Haifa, Iskenderun	Żegluga Polska
XXX	Gdańsk	Antwerp, Istanbul, Izmir, Alexandria	

#### USA

S/S Mormacpenn*) (***)	Gdynia	New York, Baltimore Philadelphia	Moore - Mc Cormac Lines Inc. New York
M/S Batory**)	Gdynia	Copenhagen, Southampton, New York	G. A. L.
S/S „Mormacelm“(*) (***)	Gdynia	New York, Baltimore, Philadelphia	Moore Mac Cormac Lines Inc. New York
M/S Erria*)	Gdynia	Copenhagen, New York	The East Asiatic Co Copenhagen
S/S „Mormacsaga*) (***)	Gdynia	New York, Baltimore Philadelphia	Moore - Mc Cormac Lines Inc. New York
S/S „Mormac-oac*) (***)	Gdynia	New York, Baltimore, Philadelphia	Moore Mc Cormac Lines Inc. New York
M/S „Batory“(***)	Gdynia	Copenhagen, Southampton, New York	G. A. L.
M/S „Jutlandia“(**)	Gdynia	Copenhagen, New York	The East Asiatic Co Copenhagen

#### GULF

M/S „Rydboholm“	Gdynia	Havana, Vera Cruz, Tampico, New Orleans	Svenska America Linien, Göteborg
-----------------	--------	---	----------------------------------

#### SOUTH AMERICA

S/S Kościuszko**)	Gdynia	Antwerp, Rio de Janeiro, Santos, Buenos Aires,	G. A. L.
-------------------	--------	--	----------

AGENT	DUE	SAILS	ACCEPTS ANY CARGO ON THROUGH BILL OF LADING TO THE PORTS OF:
Pol. Unit. Bal. Corp.	6.3	9.3	All ports of the world (6)
Pol. Unit. Bal. Corp.	7.3	10.3	

**PORTS**

Rummel & Burton	1.2	3.2
G. A. L.	28.1	4.2
G. A. L.	18.1	24.2
G. A. L.	20.2	4.3
G. A. L.		9.3

**ATLANTIC PORTS**

American Scantic Line in Poland	1.2	2.2	USA, Canada, South America (7)
G. A. L.	31.1	5.2	
American Scantic Line in Poland	8.2	9.2	USA, Canada, South America (7)
Baltica	10.2	13.2	Cuba, Jamaica, Columbia, Guatemala, El Salvador, Honduras, Costa Rica, Panama (7)
American Scantic Line in Poland	15.2	16.2	USA, Canada, South America (7)
American Scantic Line in Poland	22.1	23.2	USA, Canada, South America (7)
G. A. L.	2.3	6.3	
Baltica	3.3	6.3	Cuba, Jamaica, Columbia, Guatemala, El Salvador, Honduras, Costa Rica, Panama (7)

**PORTS**

Agmor	21.2	22.2
-------	------	------

**ATLANTIC PORTS**

G. A. L.	10.2	15.2
----------	------	------

VESSEL	SAILING PORT	PORTS OF CALL	OWNER
<b>SOUTH</b>			
M/S Tulane	Gdynia	Cape Town, Port Elisabeth, Durban, East London, Lourenco Marques	W. Wilhelmsen, Oslo
<b>HINDUSTAN</b>			
S/S Kiliński**)	Gdynia	Rotterdam, Antwerp, Genoa, Port Said, Suez, Aden, Karachi, Bombay	G. A. L.
S/S St. Croix	Gdynia	Port Said, Suez, Aden, Karachi, Bombay, Colombo, Madras, Rangoon, Calcutta	The East Asiatic Co., Copenhagen
S/S St. Jan	Gdynia	Port Said, Suez, Aden, Karachi, Bombay, Colombo, Madras, Rangoon, Calcutta	The East Asiatic Co., Copenhagen
<b>FAR EAST</b>			
M/S Talisman	Gdynia	Port Said, Aden, Singapore, Manila, Hong Kong, Kobe, Yokohama	W. Wilhelmsen, Oslo
M/S Korea	Gdynia	Port Said, Suez, Aden, Singapore, Manila, Hong Kong, Shanghai, Kobe	The East Asiatic Co., Copenhagen
<b>AUSTRALIA</b>			
M/S Tulane	Gdynia	Fremantle, Adelaide, Melbourne, Sydney, Brisbane	W. Wilhelmsen, Oslo
M/S Tai Yang	Gdynia	Fremantle, Adelaide, Melbourne, Sydney, Brisbane	W. Wilhelmssen, Oslo

Ships and dates subject to alteration without notice

AGENT	DUE	SAILS	ACCEPTS ANY CARGO ON THROUGH BILL OF LADING TO THE PORTS OF:
-------	-----	-------	--

**AFRICA PORTS**

Agmor	15.2	16.2	
-------	------	------	--

**AND PAKISTAN PORTS**

G. A. L.	10.2	15.2	
Baltica	18.2	20.2	
Baltica	2.3	5.3	

**PORTS**

Agmor	12.2	13.2	
Baltica	27.2	29.2	

**PORTS**

Agmor	15.2	16.2	
Agmor	24.2	26.2	

**R e m a r k s:**

- \*) accepts any cargo for overseas on through bill of lading with transhipment in:
- |                |               |              |
|----------------|---------------|--------------|
| (1) Copenhagen | (4) Amsterdam | (7) New York |
| (2) Göteborg   | (5) Antwerp   | (8) Oslo     |
| (3) Rotterdam  | (6) London    |              |

\*\*) accepts passengers too.

\*\*\*) accepts any cargo to all localities U. S. A. and Canada as well as to East and West coasts of South America on through bill of lading.

o) accepts any cargo for Switzerland and Paris with transhipment in Amsterdam.

# NAMES AND ADDRESSES

Ministry of Shipping

Warsaw, Filtrowa 57, phone: 4.0480

## AREA OFFICES OF THE MINISTRY OF SHIPPING

Gdańsk Maritime Office (Gdański Urząd Morski)	— Gdańsk — Wrzeszcz, Morska 22, phone: 41368
Szczecin Maritime Office (Szczeciński Urząd Morski)	— Szczecin, Wały Chrobrego 1, phone: 36-01, 2, 3, 4
Fishery Office (Morski Urząd Rybacki)	— Gdynia, Waszyngtona 32' phone: 2.7188
Fishery Office (Morski Urząd Rybacki)	— Szczecin, Zygm. Starego 4, phone: 29-55

## REPRESENTATIVES ABROAD

Polish Shipping Mission	— Whitcomb Street, London W. C. 2, phone: Whitehall 0718
Polish Shipping Mission	— Hamburg, Alstereck — Jungfernstieg
Polish Shipping Mission	— Amsterdam, I. W. Brouwersplein 7, phone: 209-92
Maritime Attache for Scandinavian Countries at Polish Legation in Sweden	— Stockholm, Falugatan 9, phone: 31.7027
Representation of Polish Railways and Ports	— Prague XII, Spanelska 8, phone: 398-04, 397-68

## PORTS AUTHORITIES

Port of Gdynia/Gdańsk Authority	— Gdańsk—Wrzeszcz, Morska 22
Port of Szczecin Authority	— Szczecin, Wały Chrobrego 1
Cargo-handling Undertaking for minor ports	— Słupsk, Starzyńskiego 2

## SHIPOWNERS

Gdynia — America Shipping Lines Ltd. (Gdynia — Ameryka Linie Żeglugowe S. A.)	— Gdynia, Portowa 15, phone: 29-01 (10 lines)
Żegluga Polska Ltd.	— Gdynia, Portowa 15
Polish — British Steamship Co.	— Gdynia, Portowa 15
Bałtycka Spółka Okrętowa	— Gdynia, Abrahama 26
W. Bartosiak	— Gdynia, Derdowskiego 7
Coastal Navigation Co. in Gdańsk	— Gdynia, Al. Zjednoczenia 2
Coastal Navigation Co. in Szczecin	— Szczecin, Zygm Starego 5, phone: 2909

## SHIPYARDS

United Polish Shipyards (Zjednoczone Stocznie Polskie)	— Gdańsk, Jana z Kolna 31, phone: 320-41
Shipyards in Szczecin (Stocznia Szczecińska)	— Szczecin,
Żegluga Morska	— Szczecin,
Fishing Shipyards Co. Ltd. (Stocznie Rybackie Sp. z o. o.)	— Gdynia, Waszyngtona 5, phone: 219-52

## SHIPBROKERS

- Shipbrokers Cooperative „Agmor“  
Harbour Offices: — Gdynia, Derdowskiego 7, phone: 33-00  
— Gdynia, Polska street Warehouse „Pantarei“, phone: 33-02  
— Gdańsk, Zamknięta 29, phone: 424-13  
— Szczecin, Wielka 5, phone: 32-35
- American Scantic Line in Poland Co. Ltd. — Gdynia, Nabrzeże Polskie, phone: 18-13
- Baltic Shipping Agency „Baltica“ Ltd.  
Branches: — Gdynia, 10 lutego 24 ,phone: 49-92  
— Gdańsk, Burtona 8, phone: 4.15-10  
— Szczecin, Malczewskiego 8, phone: 27-33  
— Ustka, Stalina 37, phone: 247  
— Darłowo, Kąpielowa 6  
— Kołobrzeg
- Gdynia — America Shipping Lines Ltd.  
(Gdynia — Ameryka Linie Żeglugowe S. A.) — Gdynia, Portowa 15, phone: 29-01 (10 lines)
- „Gama“ Shipping and Insurance Agency Ltd.  
Branches: — Gdynia, Starowiejska 40, phone: 1222  
— Gdańsk, New Port Parafialna 9 phone: 42084  
— Szczecin, Parkowa 6, phone: 2644
- „Navigator“, Polish Shipping Company Ltd.  
Branches: — Gdynia, Starowiejska 47, phone: 1021  
— Gdańsk — New Port, Oliwska 53/54,  
phone: 42198  
— Szczecin, Św. Wojciecha 1, phone: 2020  
— Ustka, Stalina 39, phone: 397  
— Darłowo, Kwiatkowskiego 48, phone: 48  
— Kołobrzeg, Wojewódzka 13
- Polish United Baltic Corporation — Gdynia, Dom Izby Przem. - Handl.,  
phone: 31-52
- Rummel & Burton Co Ltd. Shipbrokers Agency  
Branches: — Gdynia, Derdowskiego 7, phone: 2242  
— Gdańsk — New Port, phone 425-68  
— Szczecin, Ledóchowskiego 13, phone 27-22
- General Mutual Insurance Association  
Bureau of Maritime Insurance Brokers — Gdynia, Derdowskiego 7, phone: 5106
- The Polish Shipbrokers Association  
(Polski Związek Maklerów Okrętowych) — Gdynia, Świętojańska 23, phone: 15-25

## SHIPCHANDLERS

- „Baltona“ Co Ltd. — Gdynia Harbour, Nabrzeże Francuskie (The French Quay), phone: 3722  
— Gdynia Harbour, Warehouse No 5, Ham-  
ber 309  
— Gdańsk — New Port, Zamknięta 29/30,  
phone: 4.2187  
— Szczecin, Baden Powella 21, phone: 2627

## FORWARDING AGENTS

- C. Hartwig S/A, International Forwarding — Gdynia, Rotterdamska 3, phone: 1446  
Branches: — Gdańsk — New Port, Solec 1, phone: 42717  
— Gdańsk—Wrzeszcz, Grunwaldzka 20,  
phone: 41571  
— Szczecin, Plac Zwycięstwa, phone: 2798

## VARIOUS

- Polish Register of Ships  
(Polski Rejestr Statków) — Gdańsk, Elżbietajska 11, phone: 311-65

BIBLIOTEKA  
UNIERSYTECKA  
GDAŃSK

~~DZS/U 5270~~  
DUS/E 9405