

BIBLIOTEKA  
GOSPODARSTWA  
MORSKIEGO  
DZS/11 5270  
DZS/R 7405

# SAILING SCHEDULE OF POLISH PORTS

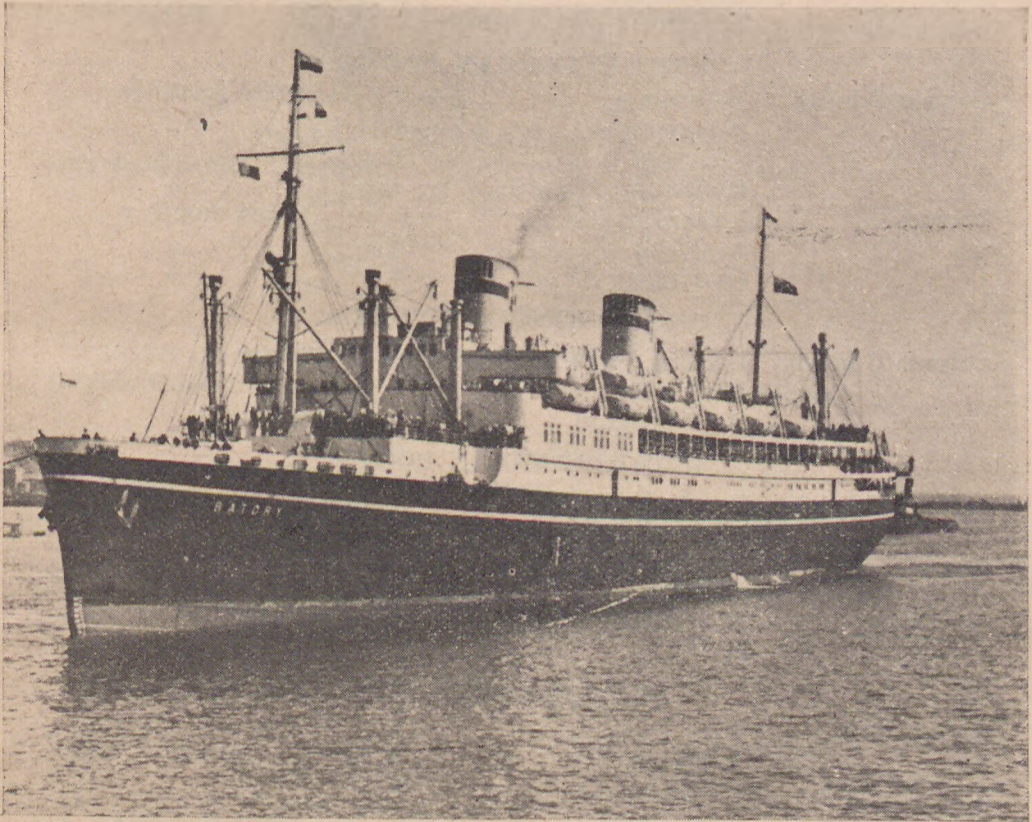


SZCZECIN



GDYNIA-GDAŃSK

1.8. — 10.9.1950



**M/S BATORY**

14287 BRT

Gdynia — Copenhagen — Southampton — New York

MINISTRY OF SHIPPING

# FREQUENCY OF SHIPPING LINES

## BALTIC AND SCANDINAVIAN PORTS.

|                        |                         |                         |                       |
|------------------------|-------------------------|-------------------------|-----------------------|
| <b>Gdynia/Gdańsk</b>   | Göteborg                | — 5 — 6 times monthly   |                       |
|                        | Malmö                   | — 3 — 4 „ „             |                       |
|                        | Stockholm               | — once weekly           |                       |
|                        | Helsinki                | —                       |                       |
|                        | Copenhagen              | — 10 — 12 times monthly |                       |
|                        | Oslo                    | — 3 — 4 „ „             |                       |
|                        | West Norwegian<br>Ports | — 3 „ „                 |                       |
|                        | East Norwegian<br>Ports | — 2 „ „                 |                       |
|                        | <b>Szczecin</b>         | Malmö                   | — 1 — 2 times monthly |
|                        |                         | Göteborg                | — 1 — 2 „ „           |
| Stockholm              |                         | — 2 „ „                 |                       |
| Oslo                   |                         | — 1 — 2 „ „             |                       |
| Copenhagen             |                         | — 1 — 2 „ „             |                       |
| Trelleborg (Ferryboat) |                         | — 2 „ weekly            |                       |

## WEST EUROPEAN PORTS.

|                      |           |                     |
|----------------------|-----------|---------------------|
| <b>Gdynia/Gdańsk</b> | Rotterdam | — 7 — times monthly |
|                      | Amsterdam | — 4 — „ „           |
|                      | Antwerp   | — 9 — 10 „ „        |
|                      | Hamburg   | — 4 — „ „           |
| <b>Szczecin</b>      | Rotterdam | — 4 — times monthly |
|                      | Antwerp   | — 4 — „ „           |
|                      | Hamburg   | — 4 — „ „           |

## UNITED KINGDOM PORTS.

|                      |             |                     |
|----------------------|-------------|---------------------|
| <b>Gdynia/Gdańsk</b> | London      | — 4 — times monthly |
|                      | Hull        | — 4 — „ „           |
|                      | Southampton | — once monthly      |

## MEDITERRANEAN PORTS.

|                      |                 |                       |
|----------------------|-----------------|-----------------------|
| <b>Gdynia/Gdańsk</b> | Tel Aviv, Haifa | — 2 — 3 times monthly |
|                      | Alexandria      | — 2 — 3 „ „           |
|                      | Istanbul        | — 2 — 3 „ „           |
|                      | Bourgas         | — 2 — 3 „ „           |
|                      | Beyrouth        | — once monthly        |
|                      | Izmir           | — 1 — 2 times monthly |

## USA ATLANTIC PORTS.

|                      |              |                       |
|----------------------|--------------|-----------------------|
| <b>Gdynia/Gdańsk</b> | New York     | — 7 — 8 times monthly |
|                      | Baltimore    | — 4 „ „               |
|                      | Philadelphia | — 4 „ „               |
| <b>Szczecin</b>      | New York     | — 1 — 2 times monthly |
|                      | Boston       | — 1 — 2 „ „           |
|                      | Philadelphia | — 1 — 2 „ „           |
|                      | Baltimore    | — 1 — 2 „ „           |
|                      | Hampton      | — 1 — 2 „ „           |
|                      | Halifax      | — 1 — 2 „ „           |

### GULF PORTS.

|                      |             |         |       |         |
|----------------------|-------------|---------|-------|---------|
| <b>Gdynia/Gdańsk</b> | Galveston   | — 2 — 3 | times | monthly |
|                      | Houston     | — 2 — 3 | "     | "       |
|                      | New Orleans | — 2 — 3 | "     | "       |
|                      | Havana      | — 2 — 3 | "     | "       |
|                      | Tampico     | — 2 — 3 | "     | "       |
|                      | Vera Cruz   | — 2 — 3 | "     | "       |

### SOUTH AMERICA PACIFIC PORTS.

|                      |               |        |         |
|----------------------|---------------|--------|---------|
| <b>Gdynia/Gdańsk</b> | La Guayra     | — once | monthly |
|                      | Porto Cabello | —      | " "     |
|                      | Callao        | —      | " "     |
|                      | Arica         | —      | " "     |
|                      | San Antonio   | —      | " "     |
|                      | Valparaiso    | —      | " "     |
|                      | Punta Arenas  | —      | " "     |

### SOUTH AMERICA ATLANTIC PORTS.

|                      |                |        |         |
|----------------------|----------------|--------|---------|
| <b>Gdynia/Gdańsk</b> | Rio de Janeiro | — once | monthly |
|                      | Buenos Aires   | —      | " "     |
|                      | Santos         | —      | " "     |
|                      | Montevideo     | —      | " "     |

### INDIA AND PAKISTAN PORTS.

|                      |          |         |       |         |
|----------------------|----------|---------|-------|---------|
| <b>Gdynia/Gdańsk</b> | Karachi  | — 2 — 3 | times | monthly |
|                      | Bombay   | — 2 — 3 | "     | "       |
|                      | Calcutta | — 2 — 3 | "     | "       |
|                      | Colombo  | — 2 — 3 | "     | "       |
|                      | Madras   | — 2 — 3 | "     | "       |
|                      | Rangoon  | — 2 — 3 | "     | "       |

### FAR EAST PORTS.

|                      |               |         |       |         |
|----------------------|---------------|---------|-------|---------|
| <b>Gdynia/Gdańsk</b> | Aden          | — 4 — 5 | times | monthly |
|                      | Penang        | — 1 — 2 | "     | "       |
|                      | Singapore     | — 1 — 2 | "     | "       |
|                      | Hong Kong     | — 1 — 2 | "     | "       |
|                      | Bangkok       | — 1 — 2 | "     | "       |
|                      | Shanghai      | — 1 — 2 | "     | "       |
|                      | Kobe          | — 1 — 2 | "     | "       |
|                      | P. Swettenham | — 1 — 2 | "     | "       |
|                      | Saigon        | — 1 — 2 | "     | "       |
|                      | Manila        | — 1 — 2 | "     | "       |

### AUSTRALIA PORTS.

|                      |            |         |       |         |
|----------------------|------------|---------|-------|---------|
| <b>Gdynia/Gdańsk</b> | Sydney     | — 1 — 2 | times | monthly |
|                      | Melbourne  | —       | "     | " "     |
|                      | Freemantle | —       | "     | " "     |
|                      | Brisbane   | —       | "     | " "     |
|                      | Adelaide   | —       | "     | " "     |

### SOUTH AFRICA PORTS.

|                      |                |        |         |
|----------------------|----------------|--------|---------|
| <b>Gdynia/Gdańsk</b> | Durban         | — once | monthly |
|                      | Port Elisabeth | —      | " "     |
|                      | Cape Town      | —      | " "     |
|                      | East London    | —      | " "     |

| VESSEL        | SAILING PORT | PORTS OF CALL                     | OWNER                               |
|---------------|--------------|-----------------------------------|-------------------------------------|
| Ferryboat     | Szczecin     | Trelleborg                        | S. J.                               |
| M/S Bug       | Gdynia       | Stockholm                         | Żegluga Polska                      |
| M/S Falken*)  | Gdynia       | Malmö, Göteborg                   | Hallands Angb. A/B,<br>Göteborg     |
| S/S Śląsk**)  | Gdańsk       | Helsinki                          | Żegluga Polska                      |
| M/S Zeus*)    | Gdynia       | Copenhagen                        | Det Forenede<br>D/S A/S, Copenhagen |
| Ferryboat     | Szczecin     | Trelleborg                        | S. J.                               |
| Ferryboat     | Szczecin     | Trelleborg                        | S. J.                               |
| S/S Hel*)     | Gdynia       | Copenhagen, Göteborg              | Żegluga Polska                      |
| M/S Narew     | Szczecin     | Stockholm                         | Żegluga Polska                      |
| M/S Alfa      | Gdynia       | Stockholm                         | A/B Coasting, Göteborg              |
| S/S Mira      | Gdańsk       | Helsinki                          | Finska Angfartygs A/B,<br>Helsinki  |
| M/S Zeus*)    | Gdynia       | Copenhagen                        | Det Forenede D/S A/S,<br>Copenhagen |
| Ferryboat     | Szczecin     | Trelleborg                        | S. J.                               |
| Ferryboat     | Szczecin     | Trelleborg                        | S. J.                               |
| M/S Oksywie*) | Gdynia       | Malmö, Copenhagen, Göteborg, Oslo | Żegluga Polska                      |
| M/S Falken*)  | Gdynia       | Malmö, Göteborg                   | Hallands Angb.<br>A/B Göteborg      |
| M/S Bug       | Gdynia       | Stockholm                         | Żegluga Polska                      |
| S/S Balduin*) | Gdynia       | Oslo, Fredrikstad, Drammen        | F. Olsen & Co., Oslo                |
| M S Zeus*)    | Gdynia       | Copenhagen                        | Det Forenede D/S A/S,<br>Copenhagen |
| Ferryboat     | Szczecin     | Trelleborg                        | S. J.                               |
| M/S Oksywie*) | Szczecin     | Malmö, Copenhagen, Göteborg, Oslo | Żegluga Polska                      |
| S/S Śląsk**)  | Gdańsk       | Helsinki                          | Żegluga Polska                      |
| Ferryboat     | Szczecin     | Trelleborg                        | S. J.                               |
| S/S Ulsnes    | Gdynia       | Stavanger, Bergen, Trondheim      | Det Stavangerske D/S<br>Stavanger   |
| S/S Hel*)     | Gdynia       | Copenhagen, Göteborg              | Żegluga Polska                      |
| M/S Alfa      | Gdynia       | Stockholm                         | A/B Coasting, Göteborg              |
| M/S Narew     | Szczecin     | Stockholm                         | Żegluga Polska                      |
| S/S Mira      | Gdańsk       | Helsinki                          | Finska Angfartygs A/B,<br>Helsinki  |
| M S Zeus*)    | Gdynia       | Copenhagen                        | Det Forenede D/S A/S,<br>Copenhagen |
| Ferryboat     | Szczecin     | Trelleborg                        | S. J.                               |
| Ferryboat     | Szczecin     | Trelleborg                        | S. J.                               |
| M/S Bug       | Gdynia       | Stockholm                         | Żegluga Polska                      |
| M S Falken*)  | Gdynia       | Malmö, Göteborg                   | Hallands Angb. A/B,<br>Göteborg     |
| S/S Śląsk**)  | Gdańsk       | Helsinki                          | Żegluga Polska                      |
| M/S Zeus*)    | Gdynia       | Copenhagen                        | Det Forenede D/S A/S,<br>Copenhagen |

**BALTIC AND**

| AGENT<br>(cable)          | DUE  | SAILS | ACCEPTS ANY CARGO ON THROUGH<br>BILL OF LADING TO THE PORTS OF:   |
|---------------------------|------|-------|---|
| <b>SCANDINAVIAN PORTS</b> |      |       |   |
| P. K. P.                  | 31.7 | 1.8   |   |
| Polameryka                | 31.7 | 4.8   |   |
| Agmor                     | 1.8  | 4.8   | USA Atlantic Coast, Canada Great Lakes, Gulf Ports,<br>West Indies, South and West Africa, Australia (2)  |
| Polameryka                | 31.7 | 5.8   |   |
| Gamma                     | 3.8  | 5.8   | Iceland (1)   |
| P. K. P.                  | 4.8  | 5.8   |   |
| P. K. P.                  | 7.8  | 8.8   |   |
| Polameryka                | 6.8  | 11.8  | East Africa, Arabia, Sudan (2)  |
| Polameryka                | 8.8  | 11.8  |   |
| Agmor                     | 7.8  | 11.8  |   |
| Baltica                   | 7.8  | 12.8  |   |
| Gamma                     | 10.8 | 12.8  | Iceland (1)   |
| P. K. P.                  | 11.8 | 12.8  |   |
| P. K. P.                  | 14.8 | 15.8  |   |
| Polameryka                | 11.8 | 16.8  | East Africa, Arabia, Sudan (2)  |
| Agmor                     | 15.8 | 18.8  | USA Atlantic coast, Canada, Great Lakes, Gulf Ports,<br>West Indies, South and West Africa, Australia (2) |
| Polameryka                | 13.8 | 18.8  |   |
| Agmor                     | 15.8 | 18.8  | Australia, USA West and East coast, Canada, South<br>Africa, India, Pakistan (8)                          |
| Gamma                     | 17.8 | 19.8  | Iceland (1)   |
| P. K. P.                  | 18.8 | 19.8  |   |
| Polameryka                | 18.8 | 19.8  | East Africa, Arabia, Sudan (2)  |
| Polameryka                | 14.8 | 19.8  |   |
| P. K. P.                  | 21.8 | 22.8  |   |
| Agmor                     | 20.8 | 23.8  |   |
| Polameryka                | 20.8 | 25.8  | East Africa, Arabia, Sudan (2)  |
| Agmor                     | 21.8 | 25.8  |   |
| Polameryka                | 21.8 | 25.8  |   |
| Baltica                   | 21.8 | 26.8  |   |
| Gamma                     | 24.8 | 26.8  | Iceland (1)   |
| P. K. P.                  | 25.8 | 26.8  |   |
| P. K. P.                  | 28.8 | 29.8  |   |
| Polameryka                | 27.8 | 1.9   |   |
| Agmor                     | 29.8 | 1.9   | USA Atlantic coast, Canada, Great Lakes, Gulf Ports,<br>West Indies, South and West Africa, Australia (2) |
| Polameryka                | 28.8 | 2.9   |   |
| Gamma                     | 31.8 | 2.9   | Iceland (1)   |

| VESSEL   | SAILING PORT                               | PORTS OF CALL  | OWNER   |
|--|--|--|---|
| Ferryboat<br>M/S Oksywie*)                           | Szczecin<br>Gdynia                         | Trelleborg<br>Malmö, Copenhagen, Göteborg, Oslo <sup>o</sup>                         | S. J.<br>Żegluga Polska                                     |
| Ferryboat<br>M/S Narew<br>S/S Hel*)<br>M/S Oksywie*) | Szczecin<br>Szczecin<br>Gdynia<br>Szczecin | Trelleborg<br>Stockholm<br>Copenhagen, Göteborg<br>Malmö, Copenhagen, Göteborg, Oslo | S. J.<br>Żegluga Polska<br>Żegluga Polska<br>Żegluga Polska |
| S/S Mira   | Gdańsk                                     | Helsinki   | Finska Angfartygs A/B,<br>Helsinki                          |
| M/S Zeus*)   | Gdynia                                     | Copenhagen   | Det Forenede D/S A/S,<br>Copenhagen                         |
| Ferryboat  | Szczecin                                   | Trelleborg   | S. J.   |

**WEST**

|                               |                    |                                  |                                |
|-------------------------------|--------------------|----------------------------------|--------------------------------|
| S/S Puck*)                    | Gdynia             | Antwerp, Hamburg                 | Żegluga Polska                 |
| M/S Roelf *) o)<br>S/S Puck*) | Gdynia<br>Szczecin | Amsterdam<br>Antwerp, Hamburg    | K. N. S. M.<br>Żegluga Polska  |
| M/S Elbląg*)                  | Gdynia             | Hamburg, Antwerp                 | Żegluga Polska                 |
| M/S Warmia*)                  | Gdynia             | Hamburg, Rotterdam               | Żegluga Polska                 |
| M/S Tiny*)                    | Gdynia             | Rotterdam, Amsterdam,<br>Antwerp | N. V. Polen Lijn,<br>Rotterdam |
| M/S Elbląg*)                  | Szczecin           | Hamburg, Antwerp                 | Żegluga Polska                 |
| M/S Warmia*)                  | Szczecin           | Hamburg, Rotterdam               | Żegluga Polska                 |
| M/S Roelf *) o)<br>S S Puck*) | Gdynia<br>Gdynia   | Amsterdam<br>Antwerp, Hamburg    | K. N. S. M.<br>Żegluga Polska  |
| M/S Mazury*)                  | Gdynia             | Rotterdam, Hamburg               | Żegluga Polska                 |
| S S Puck*)                    | Szczecin           | Antwerp, Hamburg                 | Żegluga Polska                 |
| M S Mazury*)                  | Szczecin           | Rotterdam, Hamburg               | Żegluga Polska                 |

| AGENT<br>(cable) | DUE | SAILS | ACCEPTS ANY CARGO ON THROUGH<br>BILL OF LADING TO THE PORTS OF: |
|------------------|-----|-------|---|
| P. K. P.         | 1.9 | 2.9   |   |
| Polameryka       | 1.9 | 5.9   | East Africa, Arabia, Sudan (2)                                  |
| P. K. P.         | 4.9 | 5.9   |   |
| Polameryka       | 4.9 | 8.9   |   |
| Polameryka       | 3.9 | 8.9   | East Africa, Arabia, Sudan (2)                                  |
| Polameryka       | 7.9 | 8.9   | East Africa, Arabia, Sudan (2)                                  |
| Baltica          | 4.9 | 9.9   |   |
| Gamma            | 7.9 | 9.9   | Iceland (1)   |
| P. K. P.         | 8.9 | 9.9   |   |

#### EUROPEAN PORTS

|            |      |      |   |
|------------|------|------|---|
| Polameryka | 30.7 | 1.8  | India, Pakistan, Ceylon, Far East, Australia, USA —<br>Atlantic, Pacific and Gulf Ports, Central America,<br>Persian Gulf (5)             |
| Navigator  | 30.7 | 1.8  | All ports of the world (4)  |
| Polameryka | 2.8  | 3.8  | India, Pakistan, Ceylon, Far East, Australia USA —<br>Atlantic, Pacific and Gulf Ports, Central America,<br>Persian Gulf (5)              |
| Polameryka | 6.8  | 8.8  | India, Pakistan, Ceylon, Far East, Australia, USA —<br>Atlantic, Pacific and Gulf Ports, Central America,<br>Persian Gulf (5)             |
| Polameryka | 6.8  | 10.8 | India, Pakistan, Ceylon, Far East, Australia, USA —<br>Atlantic, Pacific, and Gulf Ports, Central America,<br>Persian Gulf (3)            |
| Rumburt    | 8.8  | 10.8 | USA, Canada, Great Lakes, Central and South Ame-<br>rica, Gulf Ports, Far East, Australia, Africa, India,<br>Indonesia, Iceland (3, 4, 5) |
| Polameryka | 9.8  | 10.8 | India, Pakistan, Ceylon, Far East, Australia, USA —<br>Atlantic, Pacific, and Gulf Ports, Central America<br>Persian Gulf (5)             |
| Polameryka | 11.8 | 12.8 | India, Pakistan, Ceylon, Far East, Australia, USA —<br>Atlantic, Pacific and Gulf Ports, Central America,<br>Persian Gulf (3)             |
| Navigator  | 13.8 | 15.8 | All ports of the world (4)  |
| Polameryka | 13.8 | 16.8 | India, Pakistan, Ceylon, Far East, Australia, USA —<br>Atlantic, Pacific and Gulf Ports, Central America,<br>Persian Gulf (5)             |
| Polameryka | 12.8 | 17.8 | India, Pakistan, Ceylon, Far East, Australia, USA —<br>Atlantic, Pacific and Gulf Ports, Central America,<br>Persian Gulf (3)             |
| Polameryka | 17.8 | 17.8 | India, Pakistan, Ceylon, Far East, Australia, USA —<br>Atlantic, Pacific, and Gulf Ports, Central America,<br>Persian Gulf (5)            |
| Polameryka | 18.8 | 19.8 | India, Pakistan, Ceylon, Far East, Australia, USA —<br>Atlantic, Pacific and Gulf Ports, Central America,<br>Persian Gulf (3)             |

| VESSEL          | SAILING PORT | PORTS OF CALL               | OWNER                             |
|-----------------|--------------|-----------------------------|-----------------------------------|
| M/S Elbląg*)    | Gdynia       | Hamburg, Antwerp            | Żegluga Polska                    |
| M/S Warmia*)    | Gdynia       | Hamburg, Rotterdam          | Żegluga Polska                    |
| M/S Elbląg*)    | Szczecin     | Hamburg, Antwerp            | Żegluga Polska                    |
| M/S Tiny*)      | Gdynia       | Rotterdam, Antwerp, Hamburg | N. V. Polen Lijn, Rotterdam       |
| M S Warmia*)    | Szczecin     | Hamburg, Rotterdam          | Żegluga Polska                    |
| S/S Puck*)      | Gdynia       | Antwerp, Hamburg            | Żegluga Polska                    |
| M/S Roelf *) o) | Gdynia       | Amsterdam                   | K. N. S. M.                       |
| S/S Puck*)      | Szczecin     | Antwerp, Hamburg            | Żegluga Polska                    |
| M/S Mazury*)    | Gdynia       | Rotterdam, Hamburg          | Żegluga Polska                    |
| M/S Mazury*)    | Szczecin     | Rotterdam, Hamburg          | Żegluga Polska                    |
| M/S Elbląg*)    | Gdynia       | Hamburg, Antwerp            | Żegluga Polska                    |
| M/S Warmia*)    | Gdynia       | Hamburg, Rotterdam          | Żegluga Polska                    |
| M/S Elbląg*)    | Szczecin     | Hamburg, Antwerp            | Żegluga Polska                    |
| M S Warmia*)    | Szczecin     | Hamburg, Rotterdam          | Żegluga Polska                    |
| <b>UNITED</b>   |              |                             |                                   |
| M/S Czech*)**)  | Gdynia       | London                      | Pol.-Bryt. Tow. Okrętowe          |
| S/S Lech**)     | Gdynia       | Hull                        | Pol.-Bryt. Tow. Okrętowe          |
| S/S Baltara*)   | Gdynia       | London                      | Unit. Balt. Corp. Ltd.,<br>London |
| S/S Baltraffic  | Gdynia       | Hull                        | Unit. Balt. Corp. Ltd.,<br>London |
| M S Czech*)**)  | Gdynia       | London                      | Pol.-Bryt. Tow. Okrętowe          |



| AGENT<br>(cable) | DUE  | SAILS | ACCEPTS ANY CARGO ON THROUGH<br>BILL OF LADING TO THE PORTS OF:   |
|------------------|------|-------|---|
| Polameryka       | 20.8 | 22.8  | India, Pakistan, Ceylon, Far East, Australia, USA — Atlantic, Pacific and Gulf Ports, Central America, Persian Gulf (5)           |
| Polameryka       | 22.8 | 24.8  | India, Pakistan, Ceylon, Far East, Australia, USA — Atlantic, Pacific and Gulf Ports, Central America, Persian Gulf (3)           |
| Polameryka       | 23.8 | 24.8  | India, Pakistan, Ceylon, Far East, Australia, USA — Atlantic, Pacific and Gulf Ports, Central America, Persian Gulf (5)           |
| Rumburt          | 22.8 | 24.8  | USA, Canada, Great Lakes, Central and South America, Gulf Ports, Far East, Australia, Africa, India, Indonesia, Iceland (3, 4, 5) |
| Polameryka       | 25.8 | 26.8  | India, Pakistan, Ceylon, Far East, Australia, USA — Atlantic, Pacific and Gulf Ports, Central America, Persian Gulf (3)           |
| Polameryka       | 27.8 | 29.8  | India, Pakistan, Ceylon, Far East, Australia, USA — Atlantic, Pacific and Gulf Ports, Central America, Persian Gulf (5)           |
| Navigator        | 27.8 | 29.8  | All ports of the world (4)  |
| Polameryka       | 30.8 | 31.8  | India, Pakistan, Ceylon, Far East, Australia, USA — Atlantic, Pacific and Gulf Ports, Central America, Persian Gulf (5)           |
| Polameryka       | 29.8 | 31.8  | India, Pakistan, Ceylon, Far East, Australia, USA — Atlantic, Pacific and Gulf Ports, Central America, Persian Gulf (3)           |
| Polameryka       | 1.9  | 2.9   | India, Pakistan, Ceylon, Far East, Australia, USA — Atlantic, Pacific and Gulf Ports, Central America, Persian Gulf (3)           |
| Polameryka       | 3.9  | 5.9   | India, Pakistan, Ceylon, Far East, Australia, USA — Atlantic, Pacific and Gulf Ports, Central America, Persian Gulf (5)           |
| Polameryka       | 5.9  | 7.9   | India, Pakistan, Ceylon, Far East, Australia, USA — Atlantic, Pacific and Gulf Ports, Central America, Persian Gulf (3)           |
| Polameryka       | 6.9  | 7.9   | India, Pakistan, Ceylon, Far East, Australia, USA — Atlantic, Pacific and Gulf Ports, Central America, Persian Gulf (5)           |
| Polameryka       | 8.9  | 9.9   | India, Pakistan, Ceylon, Far East, Australia, USA — Atlantic, Pacific and Gulf Ports, Central America, Persian Gulf (3)           |

#### KINGDOM PORTS

|            |      |      |  |
|------------|------|------|--|
| Polameryka | 30.7 | 3.8  | India, Pakistan, Ceylon, Far East, South Africa, Portuguese East Africa (6)            |
| Polameryka | 31.7 | 4.8  |  |
| Unibaltico | 7.8  | 10.8 | All ports of the world (6)   |
| Unibaltico | 8.8  | 11.8 |  |
| Polameryka | 13.8 | 17.8 | India, Pakistan, Ceylon, Far East, Australia, South Africa, Portuguese East Africa (6) |

| VESSEL          | SAILING PORT | PORTS OF CALL | OWNER                             |
|-----------------|--------------|---------------|-----------------------------------|
| S/S Lublin*)**) | Gdynia       | London        | Pol.-Bryt. Tow. Okrętowe          |
| S/S Lech**)     | Gdynia       | Hull          | Pol.-Bryt. Tow. Okrętowe          |
| S S Baltara*)   | Gdynia       | London        | Unit. Balt. Corp. Ltd.,<br>London |
| S/S Baltraffic  | Gdynia       | Hull          | Unit. Balt. Corp. Ltd.,<br>London |
| M/S Czech*)**)  | Gdynia       | London        | Pol.-Bryt. Tow. Okrętowe          |
| S/S Lublin*)**) | Gdynia       | London        | Pol. Bryt. Tow. Okrętowe          |
| S/S Lech**)     | Gdynia       | Hull          | Pol. Bryt. Tow. Okrętowe          |
| S/S Baltara*)   | Gdynia       | London        | Unit. Balt. Corp. Ltd.,<br>London |
| S S Baltraffic  | Gdynia       | Hull          | Unit. Balt. Corp. Ltd.,<br>London |

#### MEDITERRANEAN

|                     |        |   |                        |
|---------------------|--------|---|------------------------|
| S/S Opole**)        | Gdańsk | Hamburg, Antwerp, Istanbul, Bourgas             | Żegluga Polska         |
| M/S Hadar           | Gdańsk | Haifa, Tel Aviv                                 | Zim Cargo Lines, Haifa |
| M/S Stalowa Wola**) | Gdańsk | Hamburg, Antwerp, Istanbul, Bourgas, Alexandria | G. A. L.               |
| M/S Lewant**)       | Gdańsk | Tel Aviv, Haifa                                 | Żegluga Polska         |
| M/S Morska Wola**)  | Gdańsk | Bourgas, Istanbul, Izmir, Beyrouth, Alexandria  | G. A. L.               |

#### USA

|                       |        |   |                                      |
|-----------------------|--------|---|--------------------------------------|
| S/S Mormacrio*)***)   | Gdynia | New York, Philadelphia, Baltimore         | Moore Mc Cormac Lines Inc., New York |
| S/S Mormacdale*)***)  | Gdynia | New York, Philadelphia, Baltimore         | Moore Mc Cormac Lines Inc. New York  |
| M/S Mathilda Thorden  | Gdynia | New York, Boston, Philadelphia, Baltimore | Thorden Lines, Udevalla              |
| S/S Mormacport*)***)  | Gdynia | New York, Philadelphia, Baltimore         | Moore Mc Cormac Lines Inc. New York  |
| S/S Mormacelm*)***)   | Gdynia | New York, Philadelphia, Baltimore         | Moore Mc Cormac Lines Inc. New York  |
| M/S Erria*)           | Gdynia | Copenhagen, New York                      | The East Asiatic Co., Copenhagen     |
| M/S Batory**)         | Gdynia | Copenhagen, Southampton, New York         | G. A. L.                             |
| S/S Mormacwa-ve*)***) | Gdynia | New York, Philadelphia, Baltimore         | Moore Mc Cormac Lines Inc New York   |

| AGENT<br>(cable) | DUE  | SAILS | ACCEPTS ANY CARGO ON THROUGH<br>BILL OF LADING TO THE PORTS OF:                        |
|------------------|------|-------|--|
| Polameryka       | 13.8 | 17.8  | India, Pakistan, Ceylon, Far East, Australia, South Africa, Portuguese East Africa (6) |
| Polameryka       | 14.8 | 14.8  |  |
| Unibaltico       | 21.8 | 24.8  | All ports of the world (6)   |
| Unibaltico       | 22.8 | 25.8  |  |
| Polameryka       | 27.8 | 31.8  | India, Pakistan, Ceylon, Far East, Australia, South Africa, Portuguese East Africa (6) |
| Polameryka       | 27.8 | 31.8  | India, Pakistan, Ceylon, Far East, South Africa, Portuguese East Africa (6)            |
| Polameryka       | 28.8 | 19    |  |
| Unibaltico       | 4.9  | 7.9   | All ports of the world (6)   |
| Unibaltico       | 5.9  | 8.9   |  |

#### PORTS

|            |      |      |  |
|------------|------|------|--|
| Polameryka | 3.8  | 9.8  |  |
| Rumburt    | 20.8 | 22.8 |  |
| Polameryka | 18.8 | 26.8 |  |
| Polameryka | 24.8 | 31.8 |  |
| Polameryka | 25.8 | 2.9  |  |

#### ATLANTIC PORTS

|            |      |      |   |
|------------|------|------|---|
| Mooremack  | 2.8  | 3.8  | USA, Canada, South America (7)  |
| Mooremack  | 9.8  | 10.8 | USA, Canada, South America (7)  |
| Rumburt    | 15.8 | 16.8 |   |
| Mooremack  | 16.8 | 17.8 | USA, Canada, South America (7)  |
| Mooremack  | 23.8 | 24.8 | USA, Canada, South America (7)  |
| Baltica    | 25.8 | 26.8 | Cuba, Jamaica, Columbia, Guatemala, El Salvador, Honduras, Costa Rica, Panama (7), Central America, USA Pacific Ports (1) |
| Polameryka | 19.8 | 27.8 |   |
| Mooremack  | 30.8 | 31.8 | USA, Canada, South America (7)  |

| VESSEL               | SAILING PORT | PORTS OF CALL  | OWNER                                    |
|----------------------|--------------|--|--|
| <b>GULF</b>          |              |  |  |
| M/S Tasco            | Gdynia       | Havana, Tampico, Vera Cruz, Houston, Galveston, New Orleans                | W. Wilhelmsen, Oslo                      |
| S/S Sue Lykes        | Gdynia       | Havana, Tampico, Vera Cruz, Houston, Galveston, New Orleans                | Lykes Bros., New Orleans                 |
| M/S Vretaholm        | Gdynia       | Havana, Tampico, Vera Cruz, Houston, Galveston, New Orleans                | Svenska Amerika Linien, Göteborg         |
| <b>SOUTH AMERICA</b> |              |  |  |
| M/S Waryński**)      | Gdynia       | Antwerp, Rio de Janeiro, Santos, Buenos Aires                              | G. A. L.                                 |
| <b>SOUTH</b>         |              |  |  |
| M/S Tai Yim          | Gdynia       | Cape Town, Port Elisabeth, Durban, Lourenzo Marque.                        | W. Wilhelmsen, Oslo                      |
| <b>INDIA</b>         |              |  |  |
| M/S Mickiewicz**)    | Gdynia       | Hamburg, Genoa, Port Said, Suez, Aden, Karachi, Bombay                     | Zegluga Polska                           |
| S/S St. Thomas       | Gdynia       | Port Said, Suez, Aden, Karachi, Bombay, Colombo, Madras, Rangoon, Calcutta | The East Asiatic Co., Copenhagen         |
| M/S Mickiewicz**)    | Szczecin     | Hamburg, Genoa, Alexandria, Port Said, Suez, Aden, Karachi, Bombay         | Zegluga Polska                           |
| M/S Spero            | Gdynia       | Bombay, Karachi, Persian Gulf  | Svenska Ostasiatiska Komp., Göteborg     |
| M/S Nordwahl         | Gdynia       | Port Said, Suez, Aden, Karachi, Bombay, Colombo, Madras, Rangoon, Calcutta | The East Asiatic Co., Copenhagen         |
| <b>FAR EAST</b>      |              |  |  |
| M/S Tonghai          | Gdynia       | Singapore, Manila, Hong Kong, Kobe, Yokohama                               | A/B Svenska Ostasiatiska Komp., Göteborg |
| M/S Nordvest         | Gdynia       | Port Said, Suez, Aden, Singapore, Manila, Hong Kong, Shanghai, Kobe        | The East Asiatic Co., Copenhagen         |
| M/S Bali             | Gdynia       | Singapore, Manila, Hong Kong, Kobe, Yokohama                               | A/B Svenska Ostasiatiska Komp., Göteborg |

| AGENT<br>(cable)          | DUE     | SAILS | ACCEPTS ANY CARGO ON THROUGH<br>BILL OF LADING TO THE PORTS OF: |
|---------------------------|---------|-------|---|
| <b>PORTS</b>              |         |       |   |
| Agmor                     | 15.8    | 16.8  |   |
| Agmor                     | 20.8    | 22.8  |   |
| Agmor                     | 21.8    | 22.8  |   |
| <b>ATLANTIC PORTS</b>     |         |       |   |
| Polameryka                | 7.8     | 15.8  |   |
| <b>AFRICA PORTS</b>       |         |       |   |
| Agmor                     | 29.7    | 1.8   |   |
| <b>AND PAKISTAN PORTS</b> |         |       |   |
| Polameryka                | 8.8     | 15.8  |   |
| Baltica                   | 18-20.8 | 22.8  |   |
| Polameryka                | 16.8    | 23.8  |   |
| Agmor                     | 22.8    | 23.8  |   |
| Baltica                   | 6.9     | 7.9   |   |
| <b>PORTS</b>              |         |       |   |
| Agmor                     | 30.7    | 1.8   |   |
| Baltica                   | 8-10.8  | 12.8  |   |
| Agmor                     | 27.8    | 29.8  |   |

| VESSEL                   | SAILING<br>PORT | PORTS OF CALL   | OWNER                                |
|--------------------------|-----------------|---|--------------------------------------|
| <b>AUSTRALIA AND NEW</b> |                 |   |                                      |
| M/S Tai Yin              | Gdynia          | Fremantle, Adelaide, Mel-<br>bourne, Sydney, Brisbane   | W. Wilhelmsen, Oslo                  |
| M/S Dansborg             | Gdynia          | Adelaide, Sydney,<br>Melbourne  | The East Asiatic Co.,<br>Copenhagen  |
| M/S Wangaratta           | Gdynia          | Panama Canal, Auckland,<br>Wellington, Fremantle,<br>Adelaide, Melbourne, Syd-<br>ney, Brisbane | Rederi A/B Transatlant.,<br>Göteborg |

Ships and dates subject to alteration without notice

| AGENT<br>(cable) | DUE | STIIVS | ACCEPTS ANY CARGO ON THROUGH<br>BILL OF LADING TO THE PORTS OF: |
|------------------|-----|--------|---|
|------------------|-----|--------|---|

**ZEALAND PORTS**

|         |      |      |
|---------|------|------|
| Agmor   | 29.7 | 1.8  |
| Baltica | 27.8 | 29.8 |
| Agmor   | 30.8 | 1.9  |

**R e m a r k s:**

- \* ) accepts any cargo for overseas on through bill of lading with transshipment in:
 

|                |               |              |
|----------------|---------------|--------------|
| (1) Copenhagen | (4) Amsterdam | (7) New York |
| (2) Göteborg   | (5) Antwerp   | (8) Oslo     |
| (3) Rotterdam  | (6) London    |              |
- \*\* ) accepts passengers too.
- \*\*\*) accepts any cargo to all localities U. S. A. and Canada as well as to East and West coasts of South America on through bill of lading.
- o) accepts any cargo for Switzerland and Paris with transshipment in Amsterdam.

# NAMES AND ADDRESSES

Ministry of Shipping

Warszawa, Filtrowa 57, phone: 4.0480

## AREA OFFICES OF THE MINISTRY OF SHIPPING

Gdańsk Maritime Office  
(Gdański Urząd Morski)

— Gdynia, Chrzanowskiego 10

Szczecin Maritime Office  
(Szczeciński Urząd Morski)

— Szczecin, Wały Chrobrego 2

Fishery Office  
(Morski Urząd Rybacki)

— Gdynia, Waszyngtona 32, phone: 2.7188

Fishery Office  
(Morski Urząd Rybacki)

— Szczecin, Zyg. Starego 4, phone: 29-55

## REPRESENTATIVES ABROAD

Polish Shipping Mission

— Whitcomb Street, London W. C. 2,  
phone: Whitehall 0718

Polish Shipping Mission

— Hamburg, Alstereck — Jungfernstieg

Polish Shipping Mission

— Amsterdam, I. W. Brouwersplein 7,  
phone: 209-92

Maritime Attache for Scandinavian Countries  
at Polish Legation in Sweden

— Stockholm, Falugatan 9, phone: 31.7027

Representation of Polish Railways and Ports

— Prague XII, Spanelska 8,  
phone: 398-04, 397-68

## PORTS AUTHORITIES

Port of Gdańsk/Gdynia Authority

— Gdańsk—Wrzeszcz, Morska 22, phone 419-41

Port of Szczecin Authority

— Szczecin, Wały Chrobrego 2, phone: 36-01

Cargo-handling Undertaking for minor ports

— Słupsk, Starzyńskiego 2

## SHIPOWNERS

Gdynia — America Shipping Lines Ltd.  
(Gdynia — Ameryka Linie Żeglugowe S. A.)

— Gdynia, Portowa 15, phone: 29-01 (10 lines)  
cables: Polameryka

Żegluga Polska Ltd.

— Gdynia, Portowa 15

Polish — British Steamship Co.

— Gdynia, Portowa 15

Bałtycka Spółka Okrętowa

— Gdynia, Abrahama 26

W. Bartosiak

— Gdynia, Derdowskiego 7

Coastal Navigation Co. in Gdańsk

— Gdańsk, Grodzka 17, phone: 31975

Coastal Navigation Co. in Szczecin

— Szczecin, Zyg. Starego 5, phone: 2909

## SHIPYARDS

Central Board of Shipbuilding Industry  
(Centralny Zarząd Przemysłu Okrętowego)

— Gdańsk, Jana z Kolna 31, phone: 320-41  
cables: Zetespe

## SHIPBROKERS

Shipbrokers, Liner & Average Agents „Agmor“  
Harbour Offices:

— Gdynia, Derdowskiego 7, phone: 33-01  
— Gdynia, Polska street Warehouse „Pantarei“, phone: 33-02  
— Gdańsk, Zamknięta 18, phone: 342-13  
— Szczecin, Wielka 5, phone: 52-35  
cables: Agmor



- American Scantic Line in Poland Co. Ltd. — Gdynia, Nabrzeże Polskie, phone: 18-13  
cables: Mooremack
- Baltic Shipping Agency „Baltica“ Ltd. — Gdynia, Waszyngtona 34, phone 49-94  
Branches: — Gdańsk, Zamknięta 18, phone: 4.15-10  
— Szczecin, Pl. Zwycięstwa 3, phone: 47-33  
— Ustka, Stalina 37, phone: 247  
— Darłowo, Kwiatkowskiego 26, phone: 220  
— Kołobrzeg, Wojewódzka 7, phone: 131  
cables: Baltica
- Gdynia — America Shipping Lines Ltd. — Gdynia, Portowa 15, phone: 29-01 (10 lines)  
(Gdynia — Ameryka Linie Żeglugowe S. A.)  
Branches: — Warszawa, Zgoda 3, phone 861-00  
— Gdańsk — New Port, Free Customs Zone,  
phone: 424-24  
— Szczecin, Jarowita 4, phone: 20-43  
cables: Polameryka
- „Gama“ Shipping and Insurance Agency Ltd. — Gdynia, Starowiejska 40, phone: 1222  
Branches: — Gdańsk, New Port, Zamknięta 18, phone 4208+  
— Szczecin, Parkowa 6, phone: 4644  
cables: Gamma
- „Navigator“, Polish Shipping Company Ltd. — Gdynia, Starowiejska 47, phone: 3906  
Branches: — Gdańsk — New Port, Zamknięta 18,  
phone: 42889  
— Szczecin, Św. Wojciecha 1, phone: 7224  
— Ustka, Stalina 36, phone: 350  
— Darłowo, Żeromskiego 16, phone: 148  
— Kołobrzeg, Wojewódzka 13, phone: 152  
cables: Navigator
- Polish United Baltic Corporation — Gdynia, Pułaskiego 6, phone: 31:52  
cables: Unibaltico
- Rummel & Burton Co Ltd. Shipbrokers Agency — Gdynia, Derdowskiego 7, phone: 2242  
Branches: — Gdańsk — New Port, Zamknięta 18,  
phone: 425-68  
— Szczecin, Ledóchowskiego 13, phone: 47-22  
cables: Rumburt
- General Mutual Insurance Association — Gdynia, Derdowskiego 7, phone: 5106  
Bureau of Maritime Insurance Brokers cables: Marine, Gdynia
- The Polish Shipbrokers Association — Gdynia, Świętojańska 23, phone: 15-25  
(Polski Związek Maklerów Okrętowych) cables: Brokerunion

### SHIPCHANDLERS

- „Baltona“ Co Ltd. — Gdynia, Świętojańska 32, phone 43-03  
— Gdynia — Polska street 17, phone: 32-66  
— Gdańsk — New Port, Zamknięta 18,  
phone: 4.2187  
— Szczecin, Baden Powella 21, phone: 2627  
— Ustka  
— Darłowo  
— Kołobrzeg  
— Świnoujście  
cables: Baltona





BIBLIOTEKA  
UNIwersytecka  
Gdańsk

~~DZS/W 5270~~  
DZS/R 7405